

PLATES 1-28

AND

EXPLANATION OF PLATES

EXPLANATION OF PLATE 1

Typical characteristics of rock assemblages of the Khao Prik unit of the Sa Kaeo-Chanthaburi accretionary complex

a : Huge limestone blocks, which are exposed near the border between Thailand and Cambodia showing typical karst topography.

b : The biggest serpentinite body in the SKCB-AC is located in the northern part of this Khao Prik unit distributional area.

UTM 48P0186703,1501538

N 13°33'59.8" E 102°06'07.7"

PLATE 1



a



b

EXPLANATION OF PLATE 2

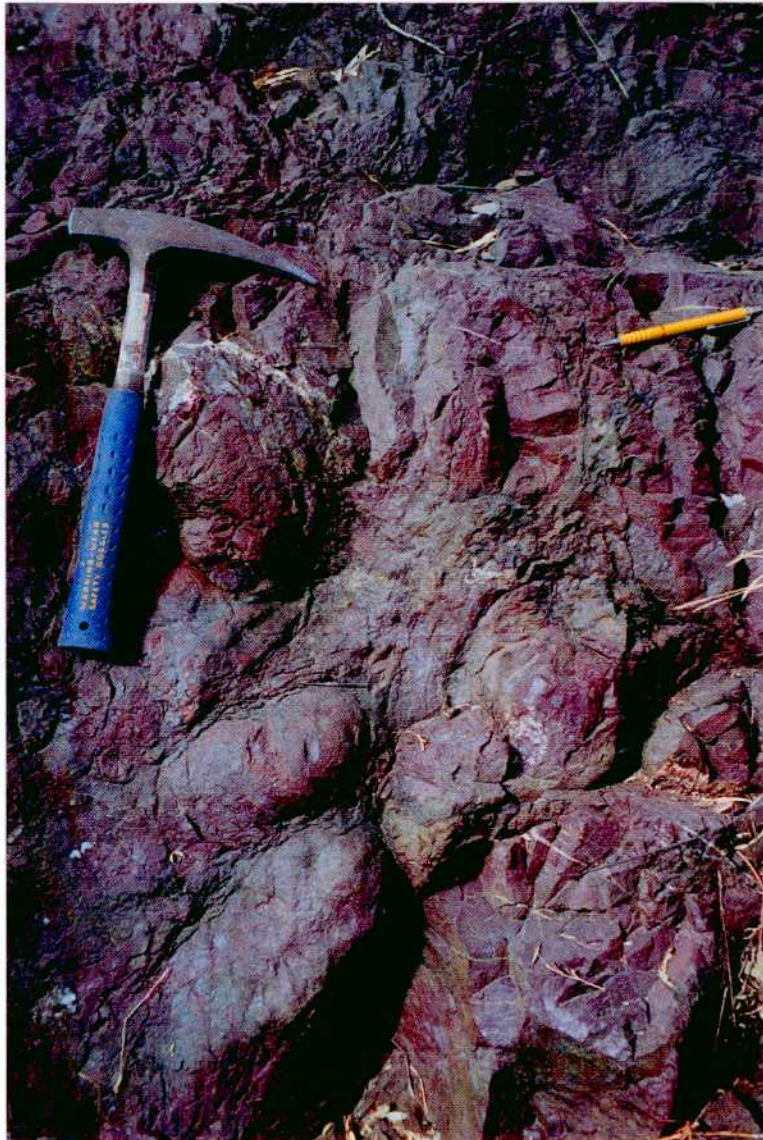
Typical characteristics of rock assemblages of the Khao Hleam unit
of the Sa Kaeo-Chanthaburi accretionary complex

Silicified pillow lava, which are exposed along the Highway
317 showing the characteristics of pillow shape.

UTM 48P0195222,1477248

N 13°20'53.0" E 102°11'10.3"

PLATE 2



EXPLANATION OF PLATE 3

Typical characteristics of rock assemblages of the Khao Hleam unit of the Sa Kaeo-Chanthaburi accretionary complex

a : Basaltic rocks along the Highway 317 (km 90+700) showing the characteristics of pillow structure (see Fig. 12).

UTM 48P0193968,1475685

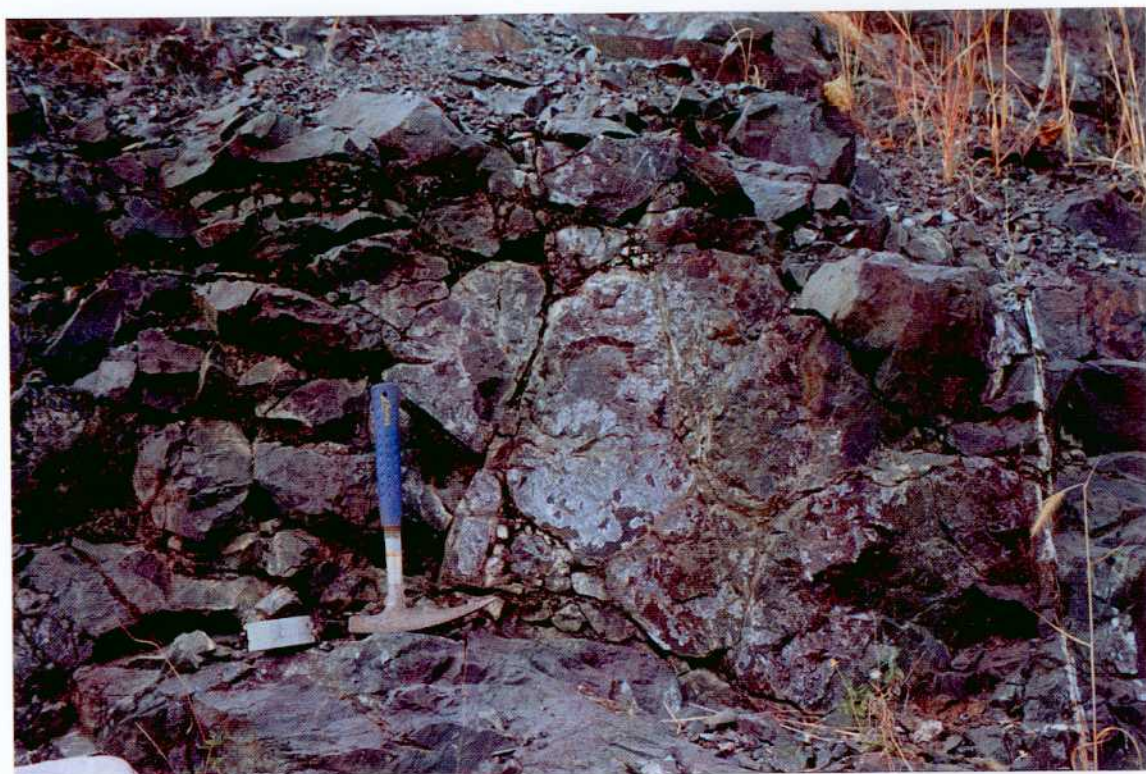
N 13°20'02.0" E 102°10'28.8"

b : Volcaniclastic rocks associated with basaltic pillow lavas (above) consisting exclusively of clasts of basaltic rocks with some of small limestone and fusulinid fragments (see Fig. 16).

UTM 48P0194035,1475742

N 13°20'03.9" E 102°10'31.3"

PLATE 3



a



b

EXPLANATION OF PLATE 4

Typical characteristics of rock assemblages of the Khao Hleam unit of the Sa Kaeo-Chanthaburi accretionary complex

a : Reddish brown chert quarry along the Highway 3448 showing hill-sized of blocks in mélange of the Khao Hleam unit.

UTM 48P0201404,1464290

N 13°13'54.3" E 102°14'39.9"

b : Reddish brown radiolarian-bearing bedded cherts along the Highway 3448 (km 6+850) showing large size of blocks in mélange of the Khao Hleam unit (see Fig. 17).

UTM 48P0199176,1463629

N 13°13'31.7" E 102°13'26.4"

PLATE 4



a



b

EXPLANATION OF PLATE 5

Typical characteristics of rock assemblages of the Ban Nong Bon unit of the Sa Kaeo-Chanthaburi accretionary complex

“Loose” blocks of *mélange* rocks near the Highway 317 showing the deformed shapes of sandstone blocks (light gray color) in shale matrix.

UTM 48P0196328,1456879

N 13°09'51.6" E 102°11'54.4"

PLATE 5



EXPLANATION OF PLATE 6

Typical characteristics of rock assemblages of the Ban Nong Bon unit of the Sa Kao-Chanthaburi accretionary complex

Conglomerate blocks in shale mélange in the type locality to south of Ban Nong Bon (see Fig. 20 and 42)

UTM 48P0222852,1429298

N 12°55'03.6" E 102°26'43.7"

PLATE 6



EXPLANATION OF PLATE 7

Typical characteristics of rock assemblages of the Soi Dao unit of the Sa Kaeo-Chanthaburi accretionary complex

a : Basaltic rocks in the Soi Dao unit showing the typical pillow structure (see Fig. 28).

UTM 48P0198998,1453550

N 13°08'03.5" E 102°13'23.8"

b : Reddish brown bedded cherts along the Highway 317 (km 58+900) showing a hill sized block in *mélange* of the Soi Dao unit.

UTM 48P0202407,1448944

N 13°05'35.9" E 102°15'18.9"

PLATE 7



a



b

EXPLANATION OF PLATE 8

Typical characteristics of rock assemblages of the Pong Nam Ron Formation of the Sa Kaeo-Chanthaburi accretionary complex

a : Turbiditic sequences of the Pong Nam Ron Formation along the Highway 3193 (km 17+900) showing the alternation of sandstone and shale.

UTM 48P0219836,1428610

N 12°54'40.3" E 102°25'04.4"

b : Overturned beds of sandstone in turbiditic sequences of the Pong Nam Ron Formation along the Highway 317 (km 46+220) showing the flute casts on sole of bed

UTM 48P0205884,1437315

N 12°59'18.7" E 102°17'18.7"

PLATE 8



a



b

EXPLANATION OF PLATE 9

Photomicrographs of sandstones of the Pong Nam Ron Formation

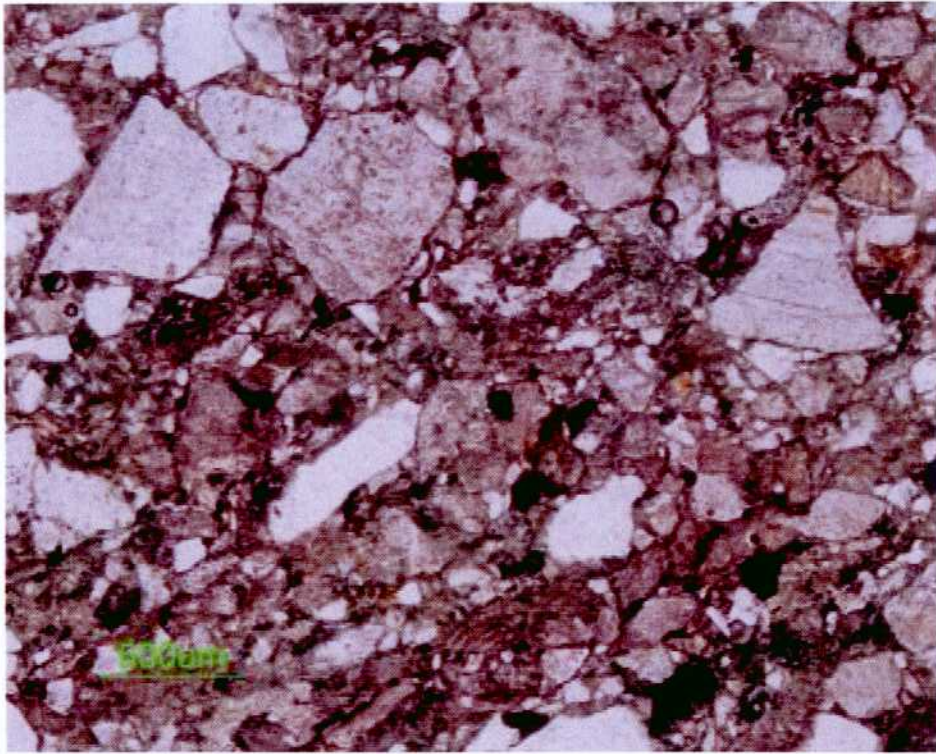
a : Thinsection no. 1-1-1

Location: Highway 317, km 29+030

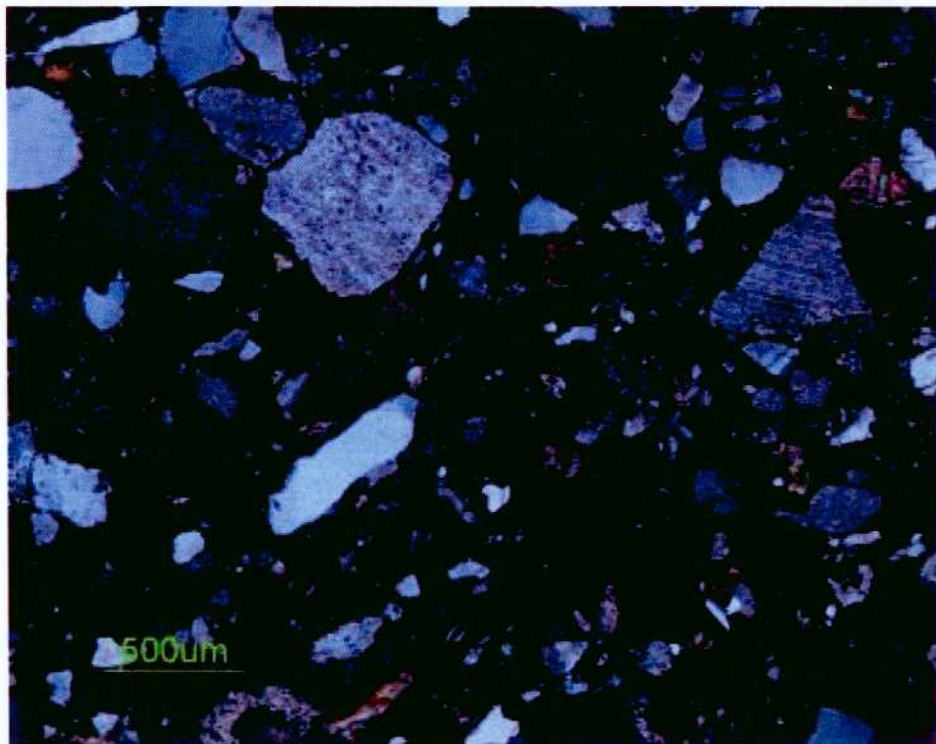
b : Thinsection no. 1-1-1 (with crossed polarizers)

Location: Highway 317, km 29+030

PLATE 9



a



b

EXPLANATION OF PLATE 10

Photomicrographs of sandstones of the Pong Nam Ron Formation

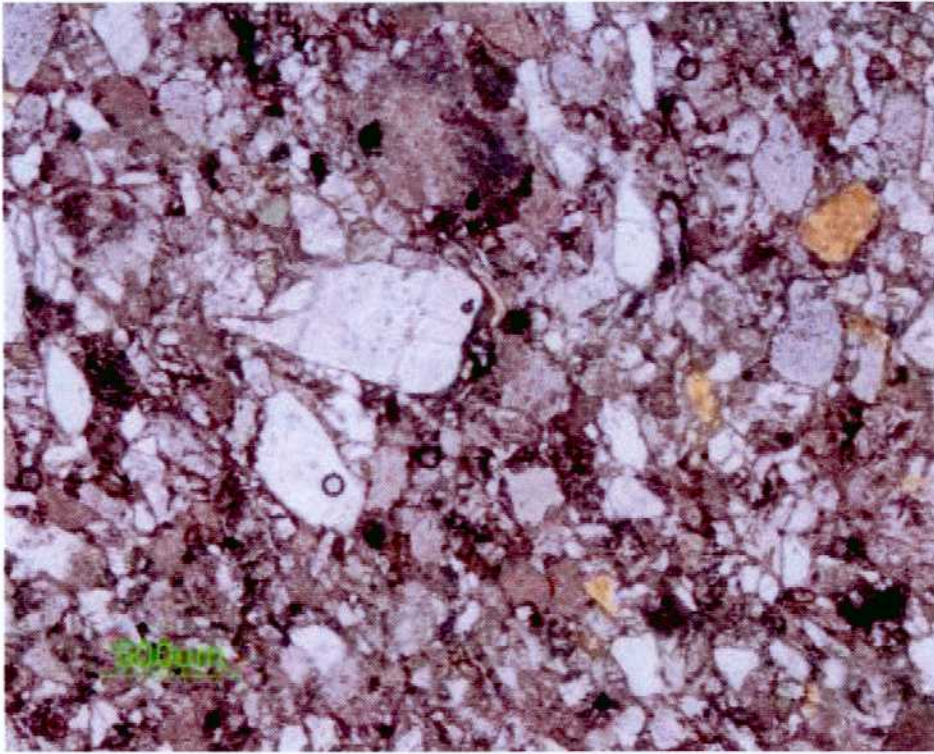
a : Thinsection no. 1-3-1

Location: Highway 317, km 29+074

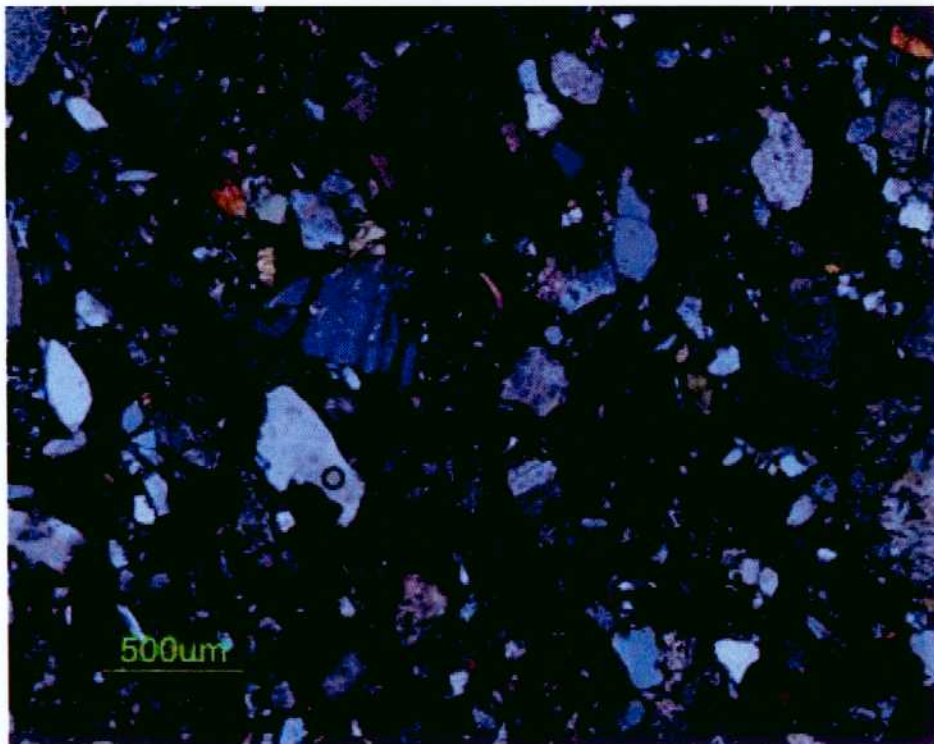
b : Thinsection no. 1-3-1 (with crossed polarizers)

Location: Highway 317, km 29+074

PLATE 10



a



b

EXPLANATION OF PLATE 11

Photomicrographs of sandstones of the Pong Nam Ron Formation

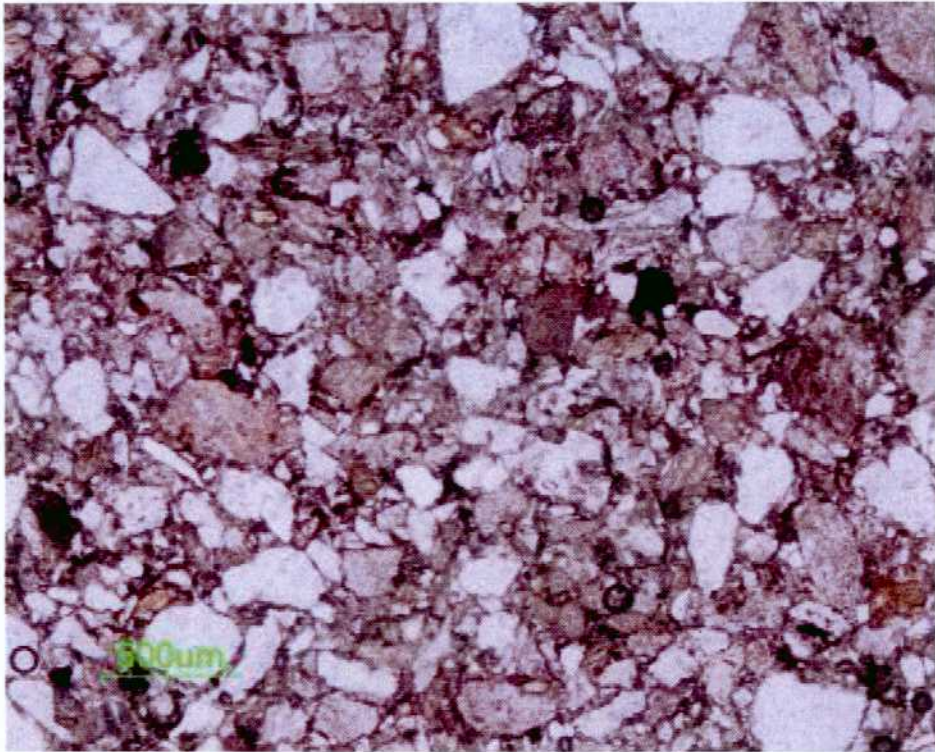
a : Thinsection no. 1-7-1

Location: Highway 317, km 30+235

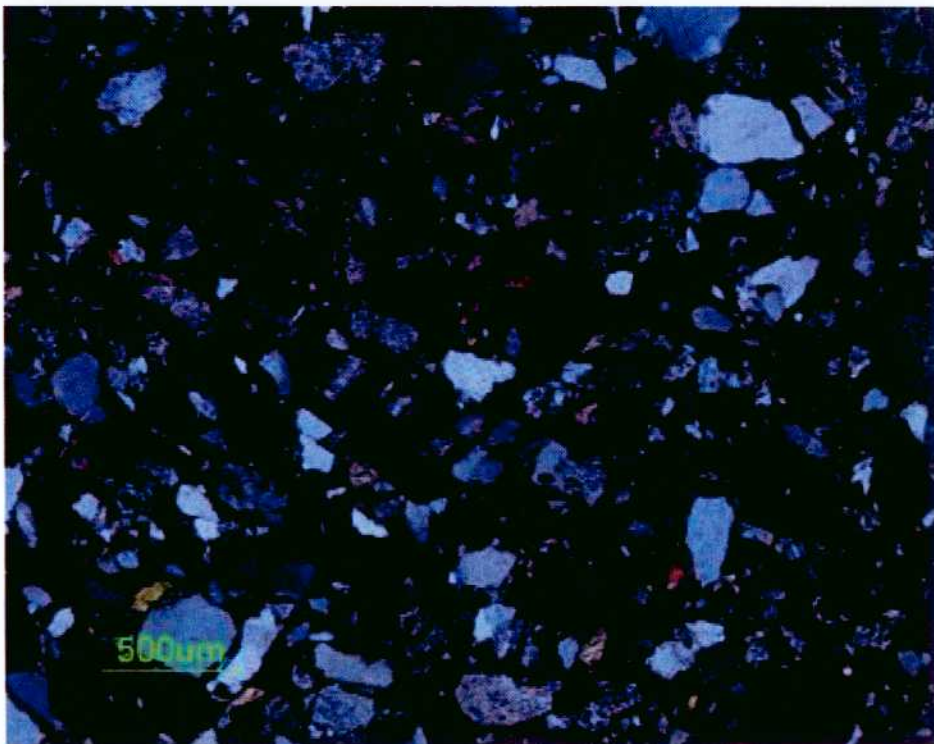
b : Thinsection no. 1-7-1 (with crossed polarizers)

Location: Highway 317, km 30+235

PLATE 11



a



b

EXPLANATION OF PLATE 12

Photomicrographs of sandstones of the Pong Nam Ron Formation

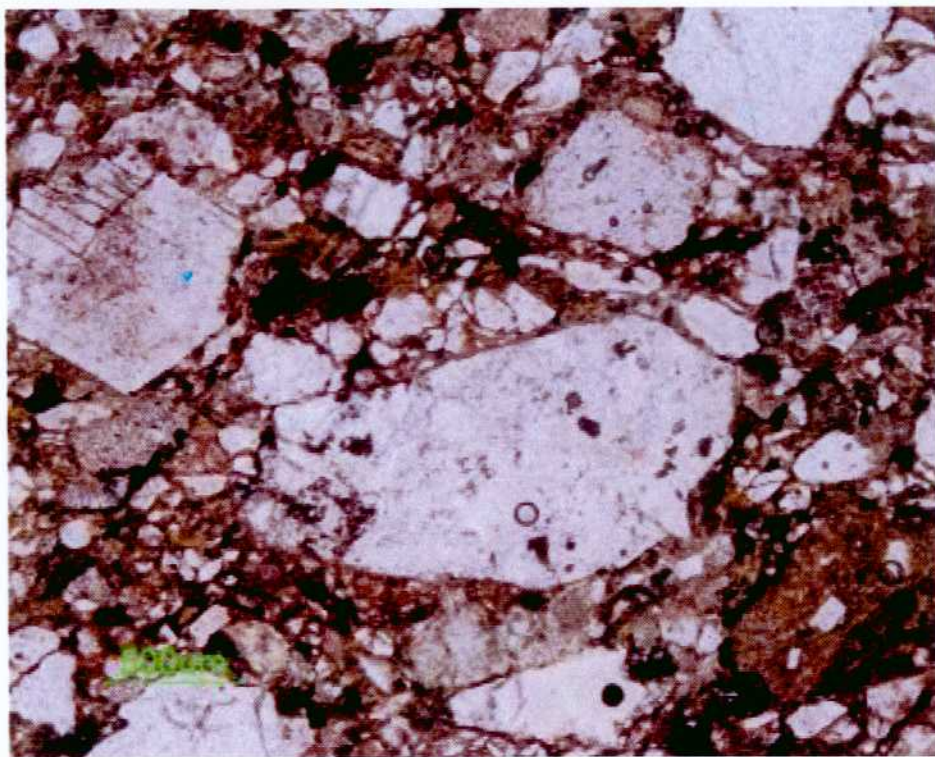
a : Thinsection no. 1-24-1

Location: Highway 317, km 44+295

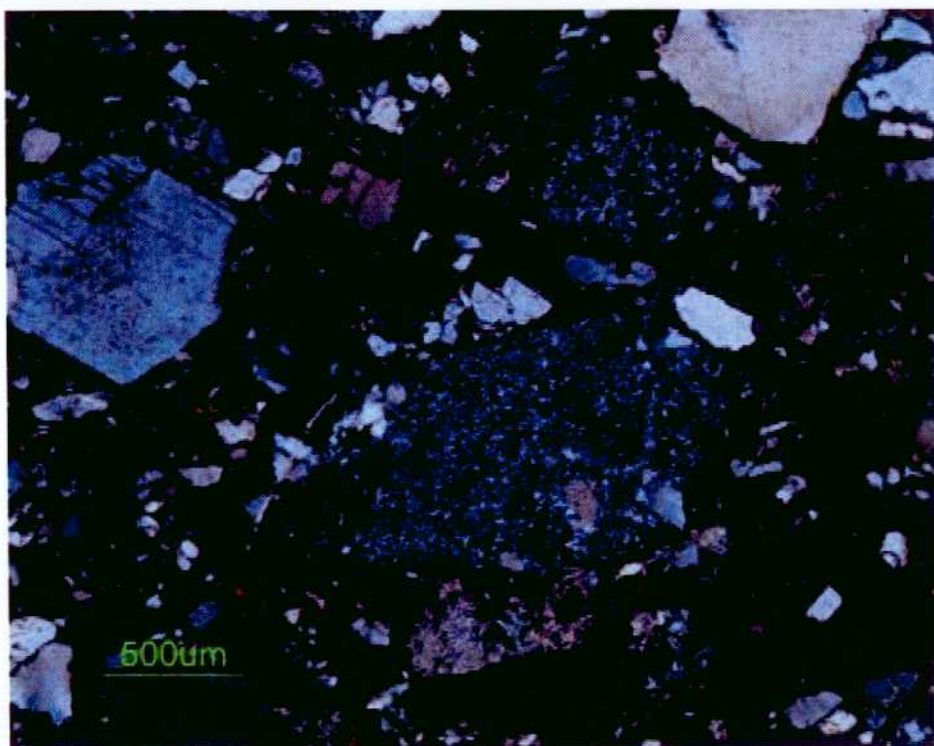
b : Thinsection no. 1-24-1 (with crossed polarizers)

Location: Highway 317, km 44+295

PLATE 12



a



b

EXPLANATION OF PLATE 13

Photomicrographs of sandstones of the Pong Nam Ron Formation

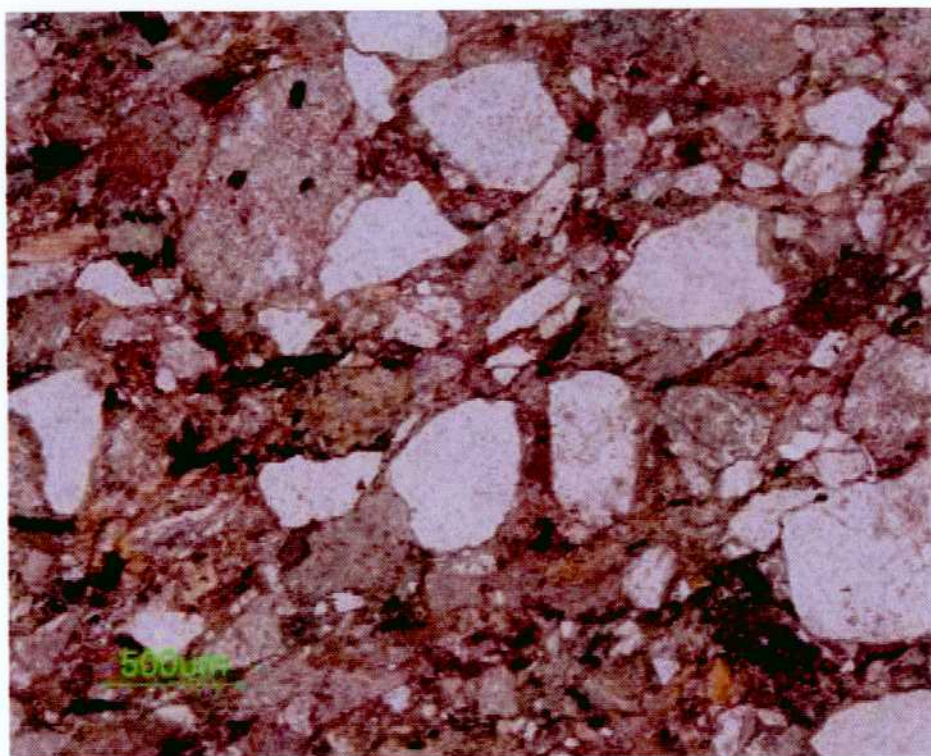
a : Thinsection no. 1-26-1

Location: Highway 317, km 44+425

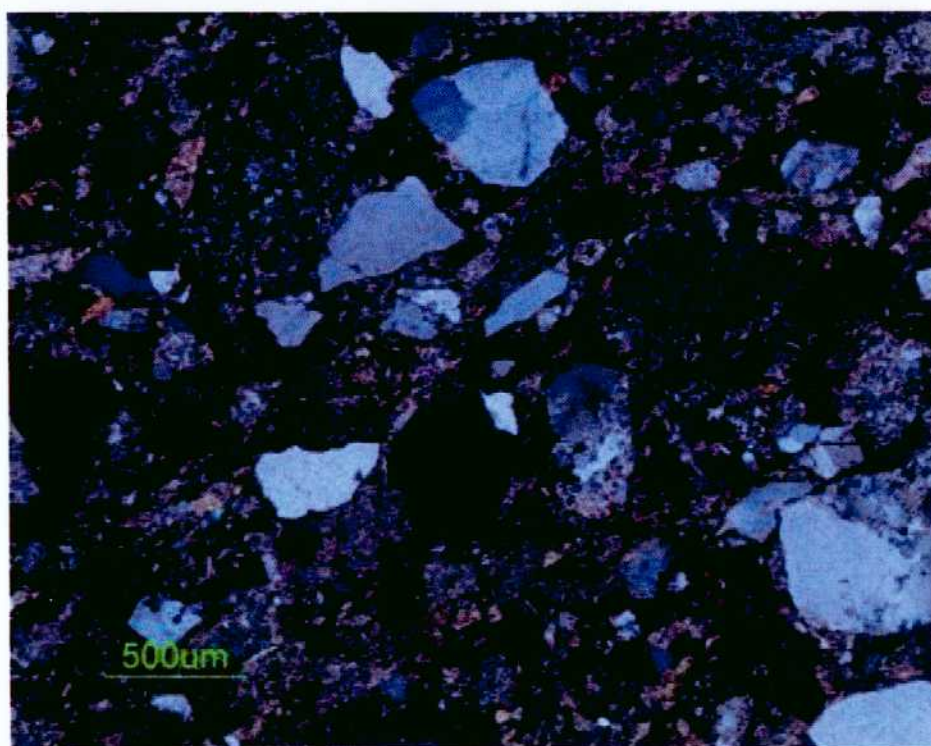
b : Thinsection no. 1-26-1 (with crossed polarizers)

Location: Highway 317, km 44+425

PLATE 13



a



b

EXPLANATION OF PLATE 14

Photomicrographs of sandstones of the Pong Nam Ron Formation

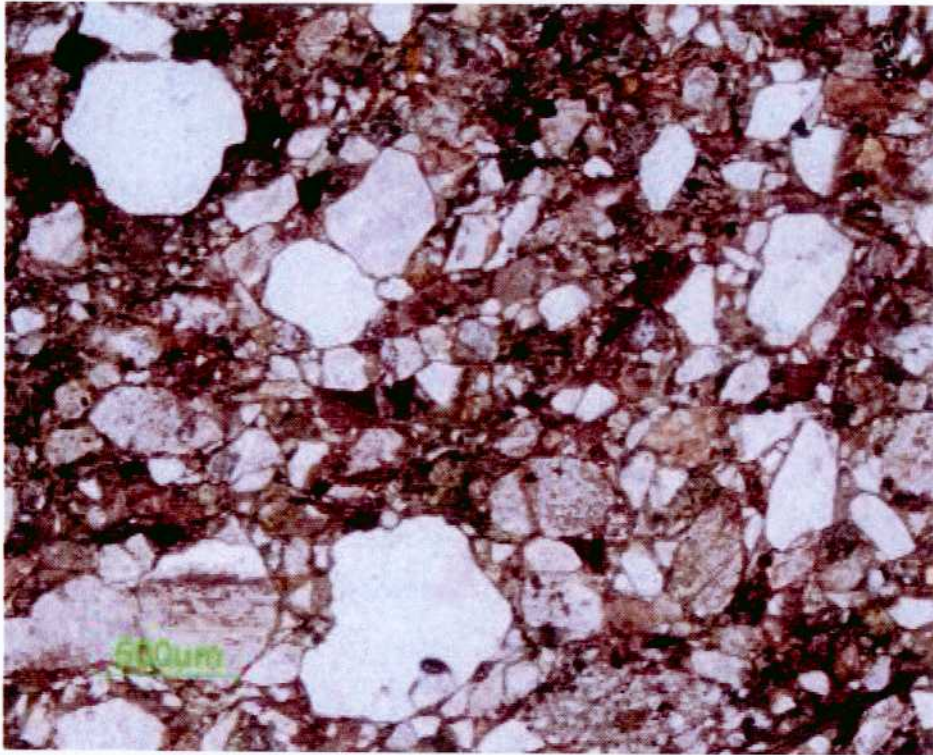
a : Thinsection no. 1-34-1

Location: Highway 317, km 46+545

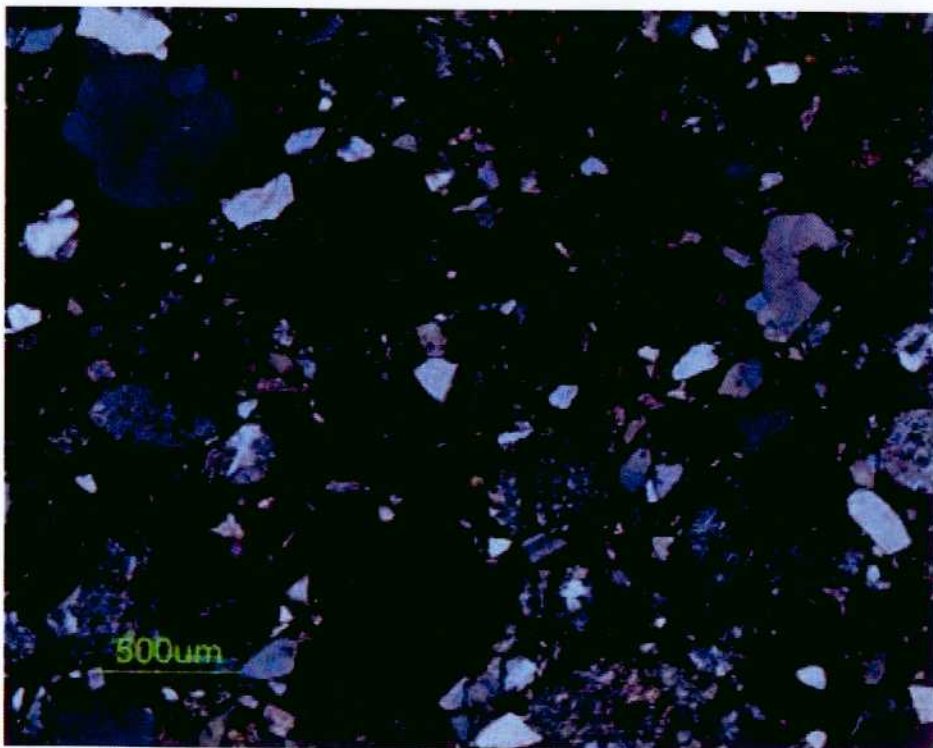
b : Thinsection no. 1-34-1 (with crossed polarizers)

Location: Highway 317, km 46+545

PLATE 14



a



b

EXPLANATION OF PLATE 15

Photomicrographs of sandstones of the Pong Nam Ron Formation

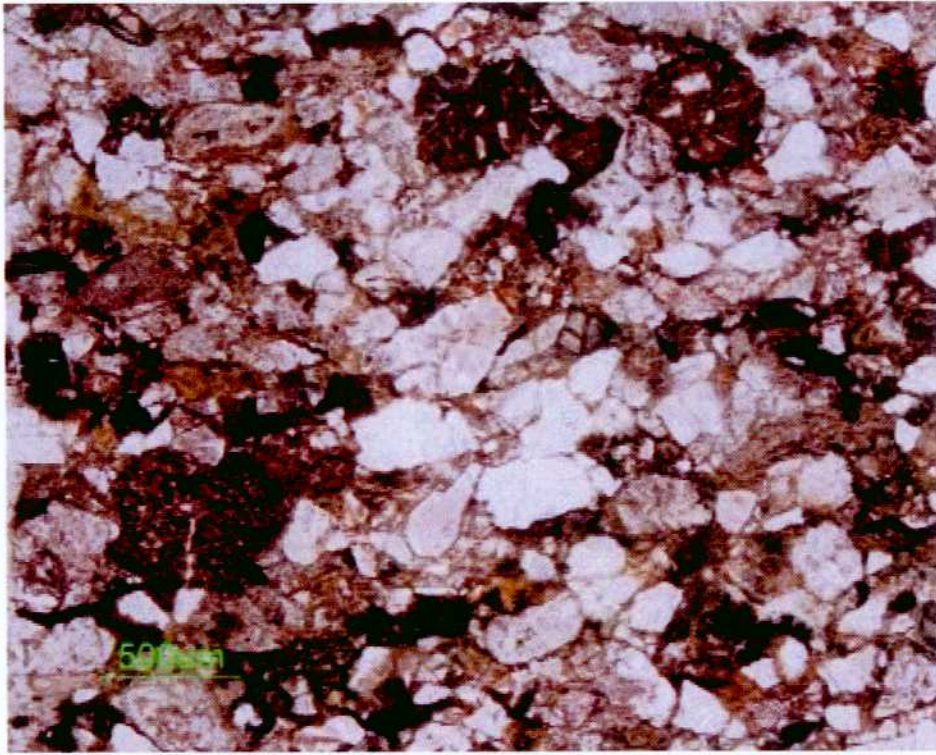
a : Thinsection no. 1-38-1

Location: Highway 317, km 46+140

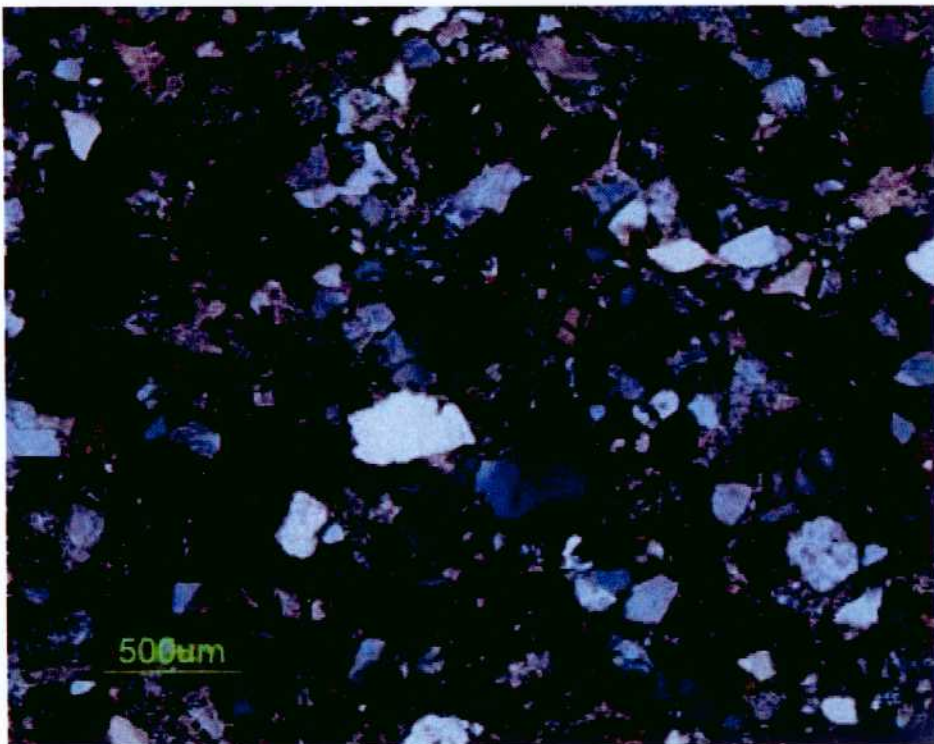
b : Thinsection no. 1-38-1 (with crossed polarizers)

Location: Highway 317, km 46+140

PLATE 15



a



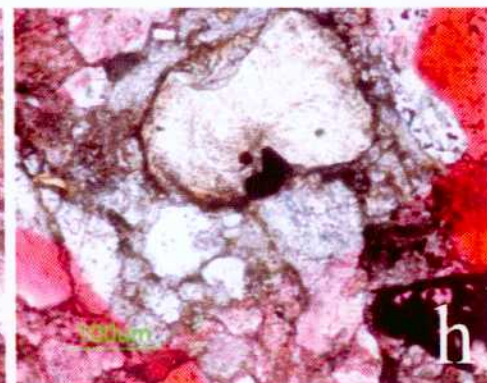
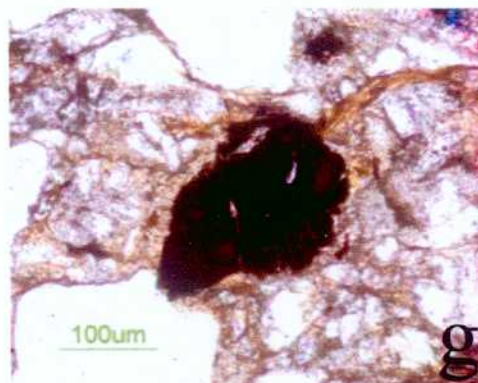
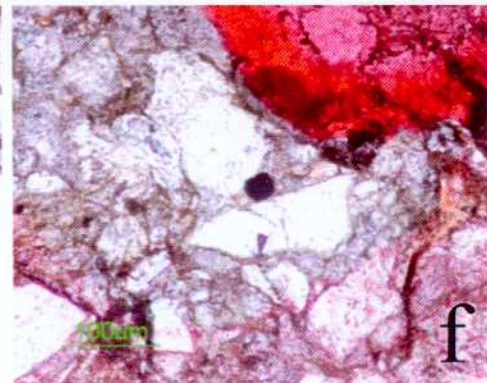
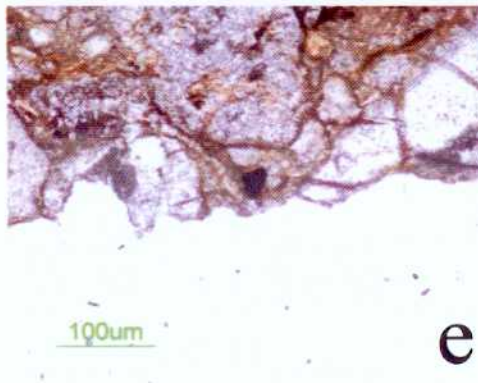
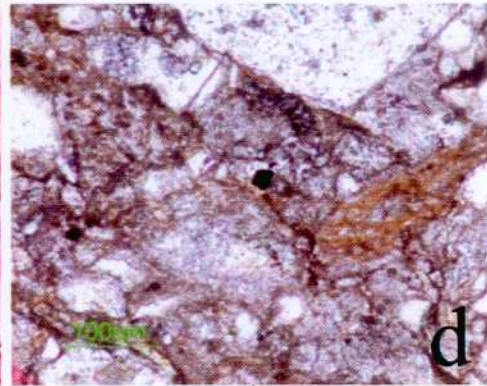
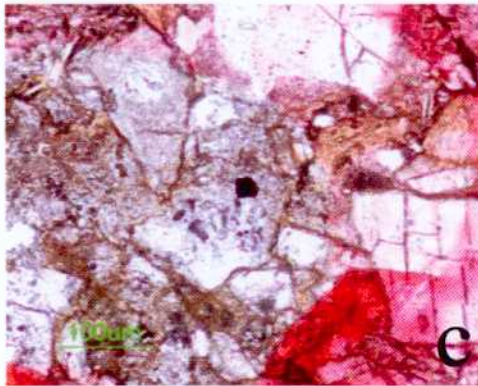
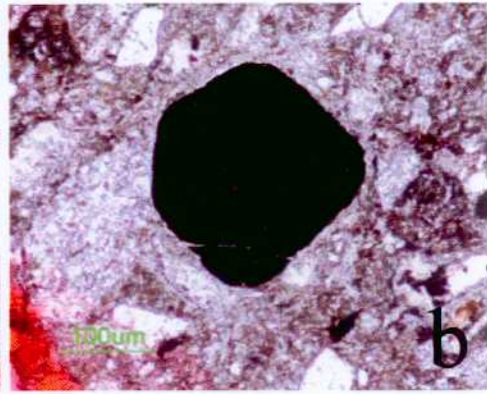
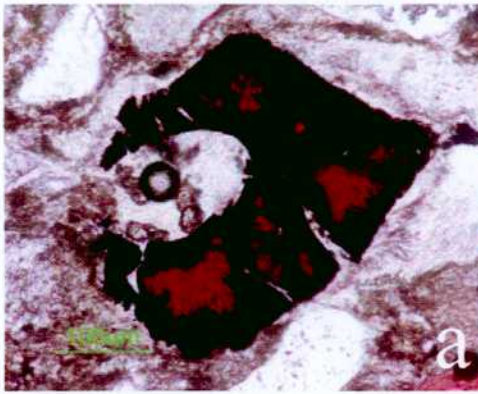
b

EXPLANATION OF PLATE 16

**Photomicrographs of detrital chromian spinels in sandstones of the
Pong Nam Ron Formation**

- a : Grain no. 1-9-2+1
- b : Grain no. 1-10-2+1
- c : Grain no. 1-27-2+1A
- d : Grain no. 1-27-2+6
- e : Grain no. 1-27-2+8
- f : Grain no. 1-27-2+11
- g : Grain no. 1-28-1+1
- h : Grain no. 1-30-2+3

PLATE 16

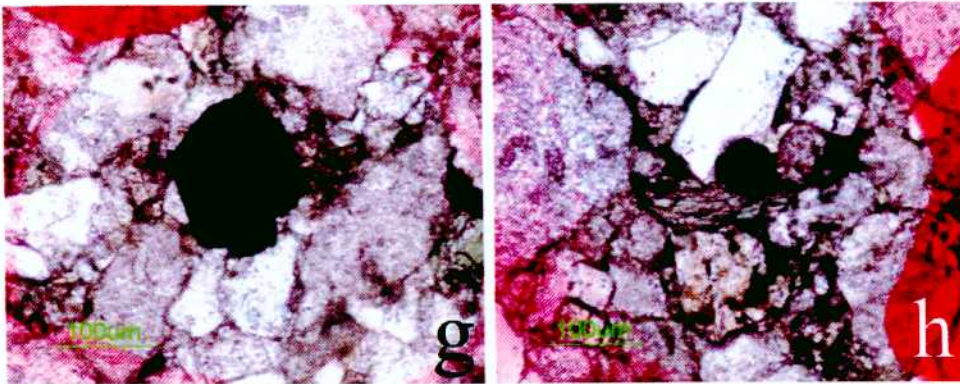
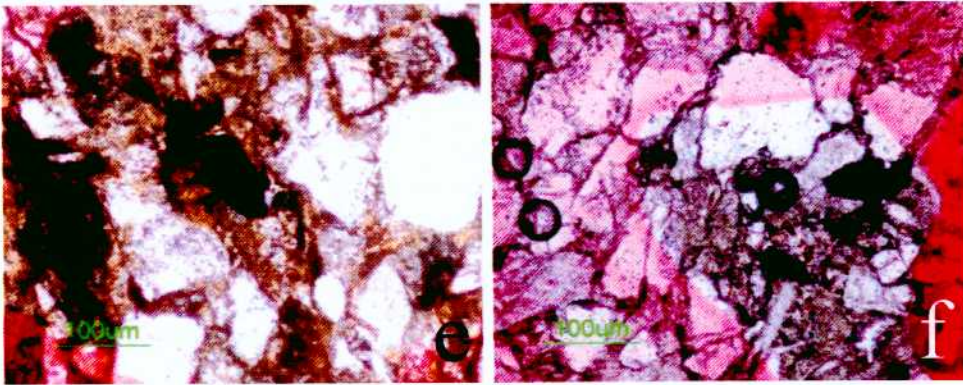
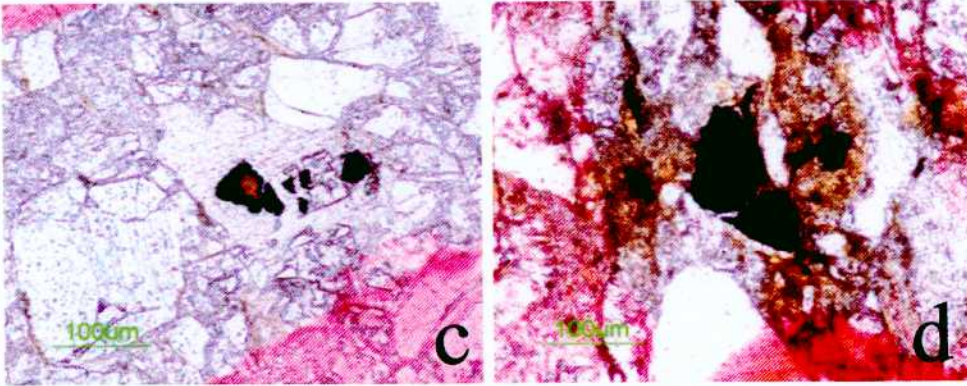
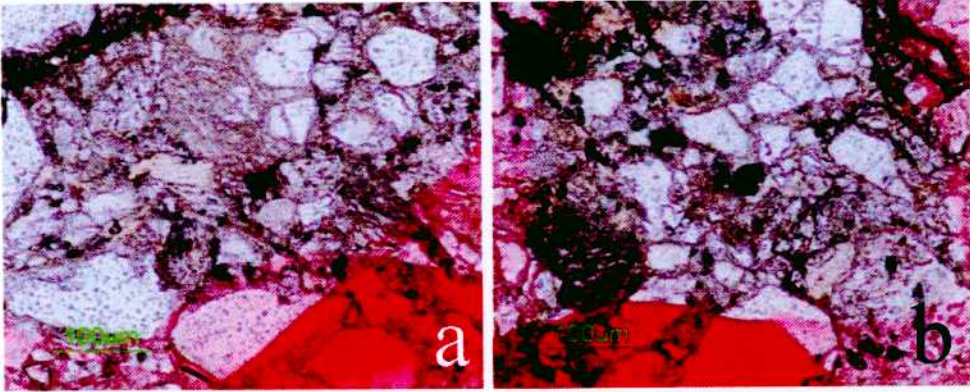


EXPLANATION OF PLATE 17

Photomicrographs of detrital chromian spinels in sandstones of the
Pong Nam Ron Formation

- a : Grain no. 1-31-2+4A
- b : Grain no. 1-31-2+9
- c : Grain no. 1-31-2+10
- d : Grain no. 1-33-2+3
- e : Grain no. 1-33-2+16
- f : Grain no. 2-1-2+7
- g : Grain no. 2-1-2+9
- h : Grain no. 2-1-2+10

PLATE 17

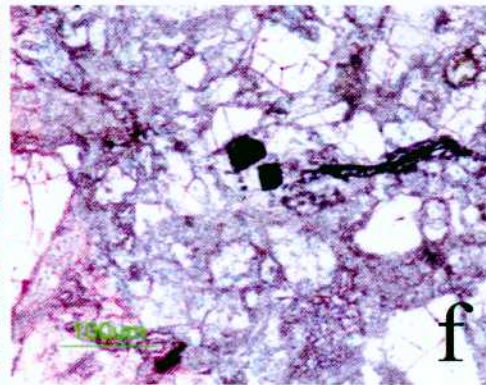
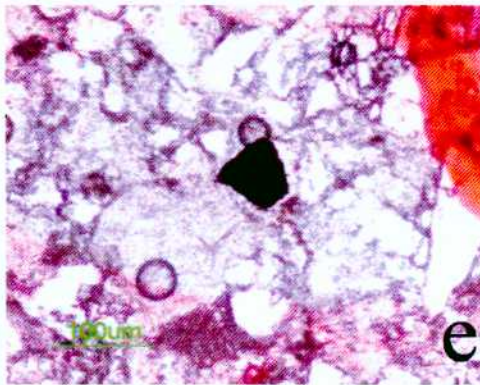
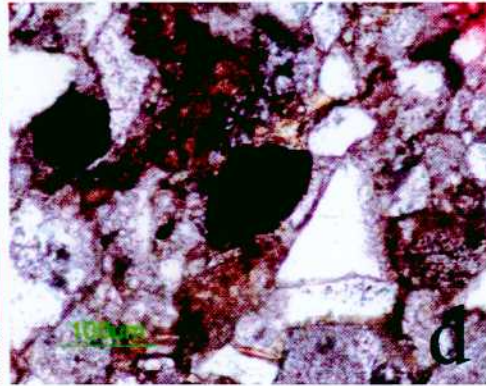
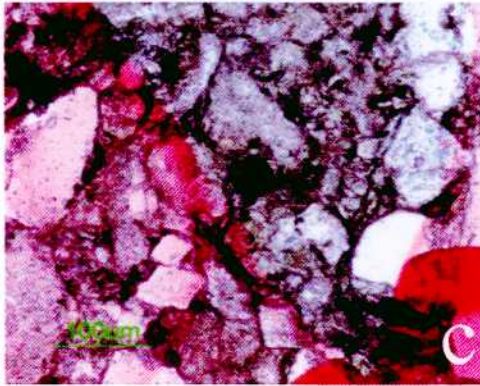
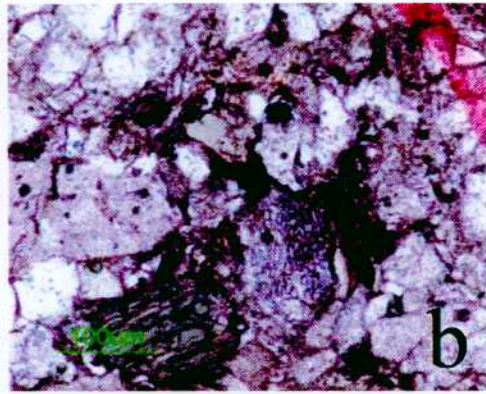
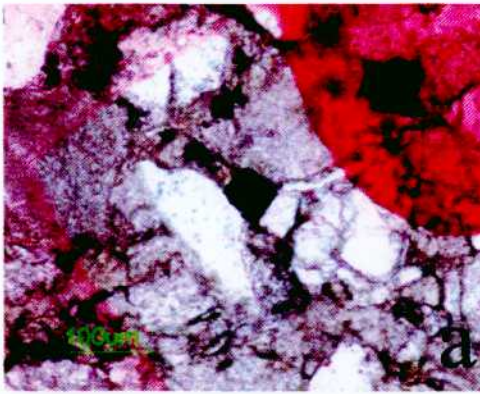


EXPLANATION OF PLATE 18

Photomicrographs of detrital chromian spinels in sandstones of the
Pong Nam Ron Formation

- a : Grain no. 2-1-2+12
- b : Grain no. 2-1-2+15
- c : Grain no. 2-1-2+16
- d : Grain no. 2-14-1+1
- e : Grain no. 2-63-4+1
- f : Grain no. 2-63-4+3

PLATE 18

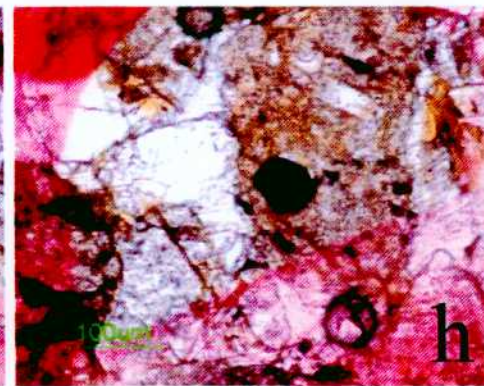
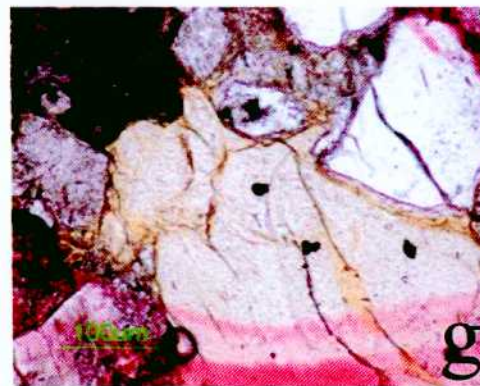
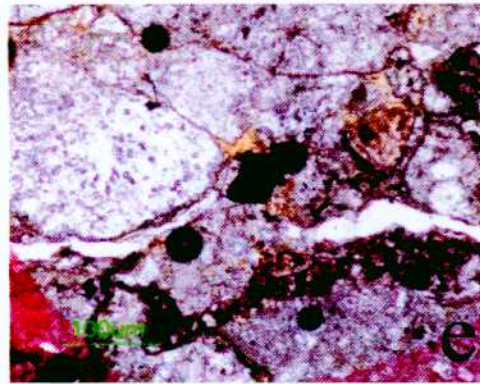
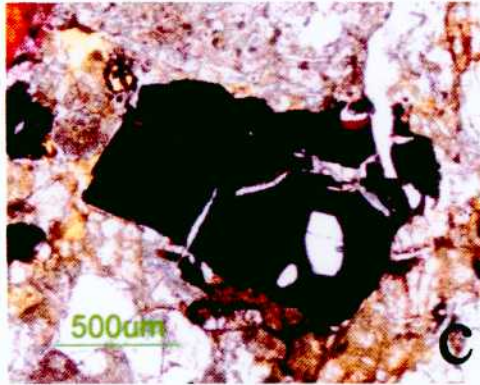
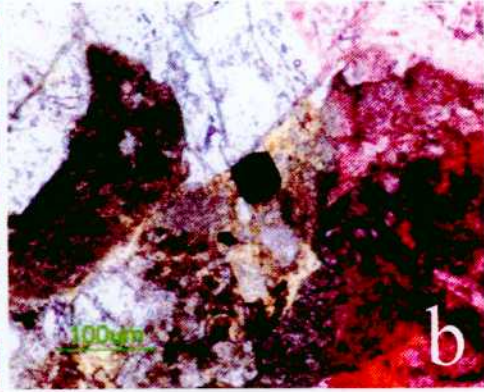
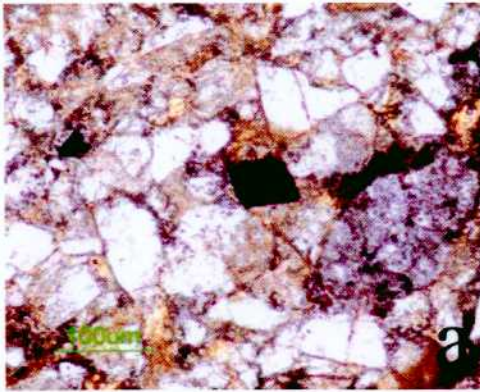


EXPLANATION OF PLATE 19

Photomicrographs of detrital chromian spinels in sandstone and conglomerate blocks in mélangé

- a : Grain no. 2-19-1+1
- b : Grain no. 2-19-1+2
- c : Grain no. 2-19-2+1
- d : Grain no. 2-19-2+4
- e : Grain no. 2-19-6+4
- f : Grain no. 2-19-6+6
- g : Grain no. 2-19-6+8B
- h : Grain no. 2-19-6+13

PLATE 19

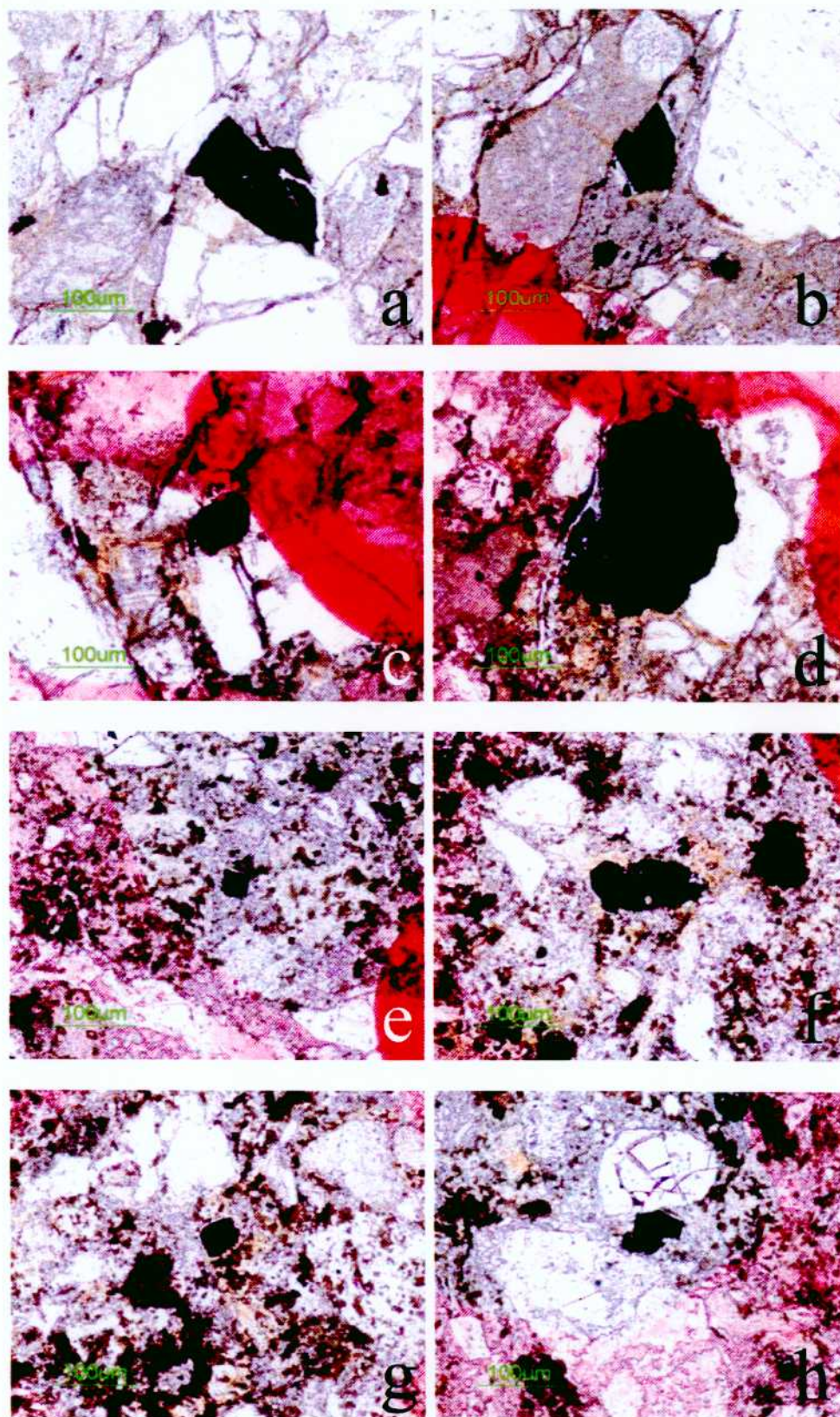


EXPLANATION OF PLATE 20

Photomicrographs of detrital chromian spinels in sandstone and conglomerate blocks in mélangé

- a : Grain no. 2-57-1+1
- b : Grain no. 2-57-1+5
- c : Grain no. 2-57-1+12
- d : Grain no. 2-57-1+13
- e : Grain no. 2-23-1+4
- f : Grain no. 2-23-1+5
- g : Grain no. 2-23-1+6
- h : Grain no. 2-23-1+9

PLATE 20

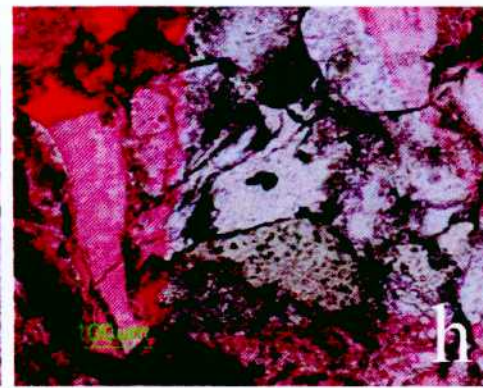
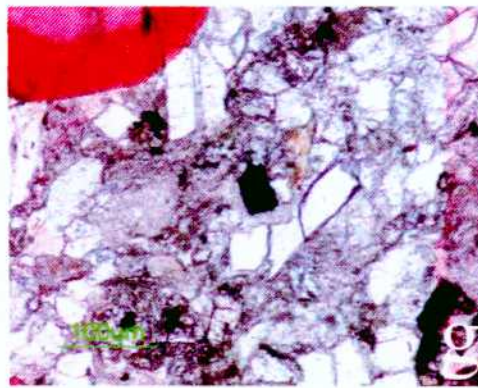
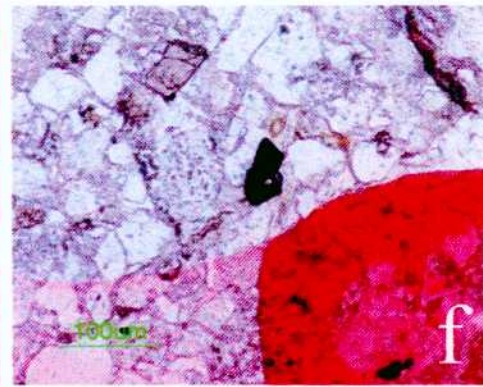
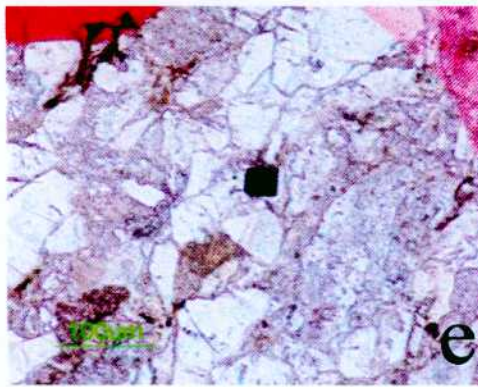
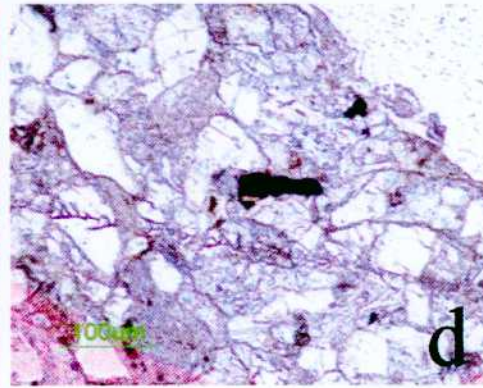
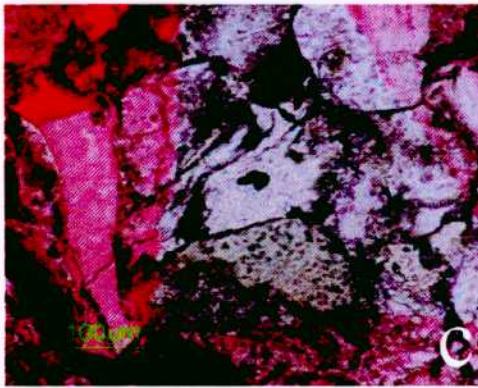
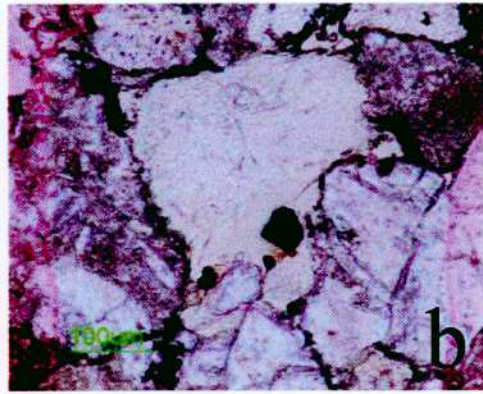
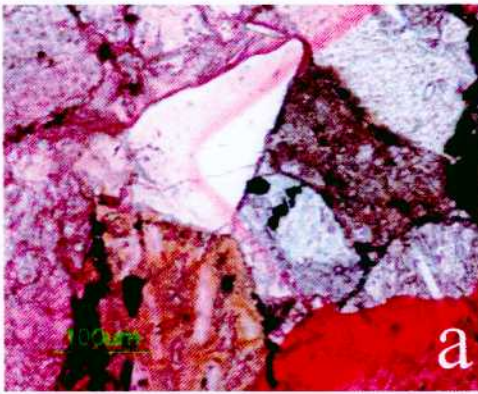


EXPLANATION OF PLATE 21

Photomicrographs of detrital chromian spinels in sandstone and conglomerate blocks in mélangé

- a : Grain no. 2-35-2+3A
- b : Grain no. 2-35-2+9A
- c : Grain no. 2-35-2+15
- d : Grain no. 2-69-2+1
- e : Grain no. 2-69-2+2
- f : Grain no. 2-69-2+3
- g : Grain no. 2-69-2+9
- h : Grain no. 2-69-2+15

PLATE 21

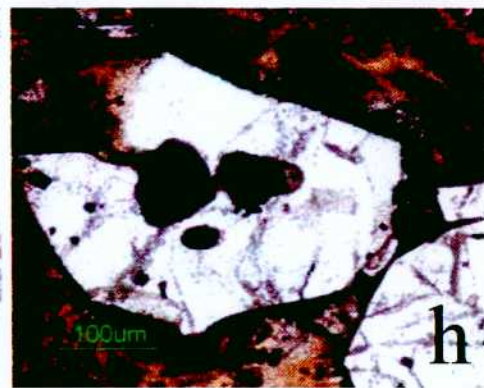
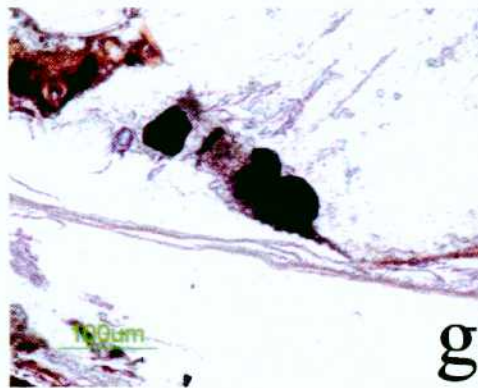
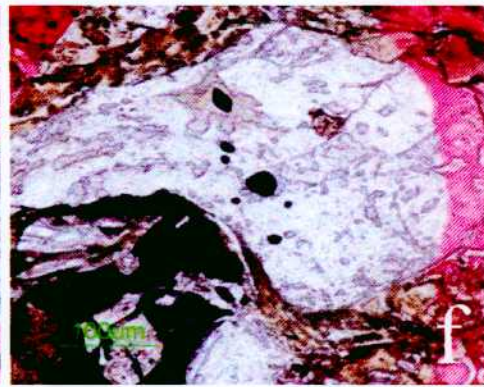
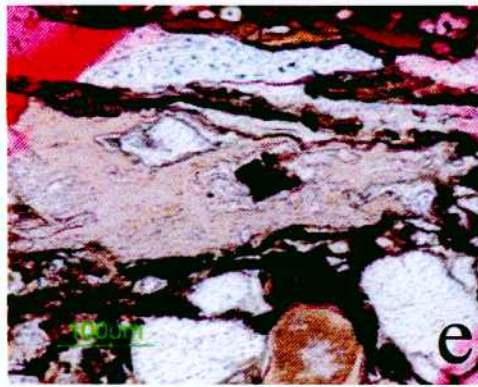
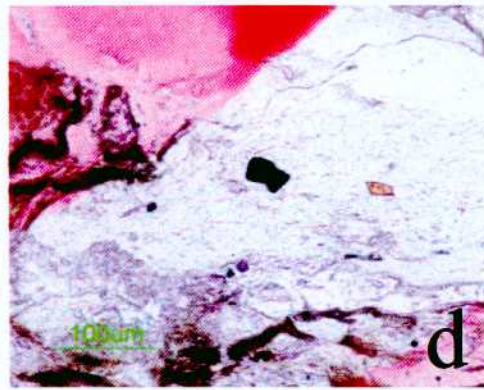
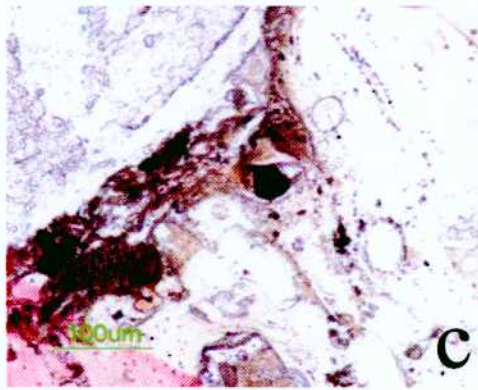
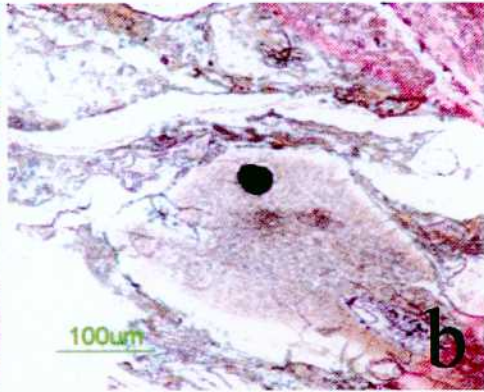
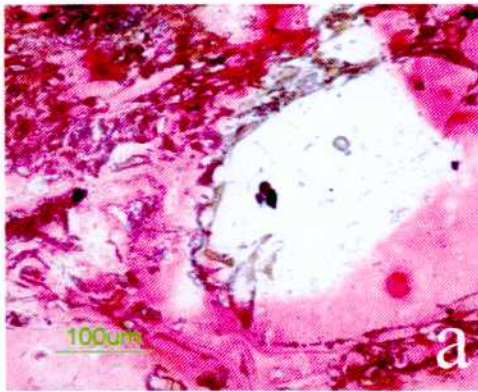


EXPLANATION OF PLATE 22

Photomicrographs of detrital chromian spinels in volcaniclastic rocks (from the Khao Hleam unit)

- a : Grain no. 2-39-1+2
- b : Grain no. 2-39-1+5
- c : Grain no. 2-39-1+6
- d : Grain no. 2-39-1+7A
- e : Grain no. 2-39-1+9
- f : Grain no. 2-39-1+20
- g : Grain no. 2-39-1+22
- h : Grain no. 2-39-1+24A

PLATE 22

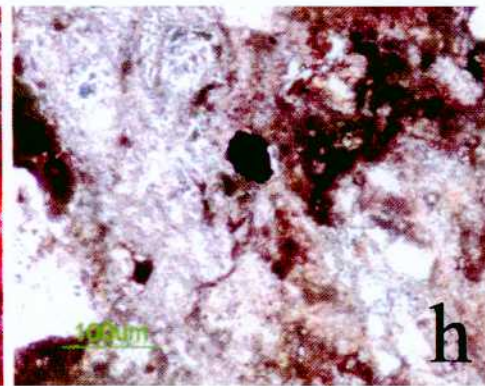
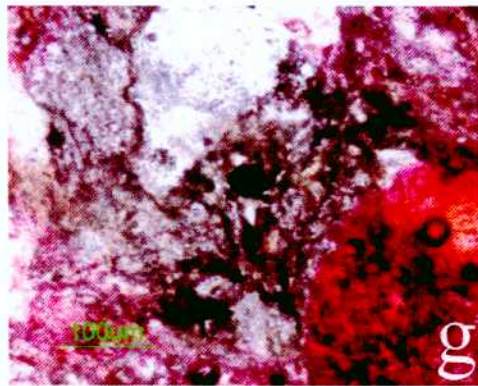
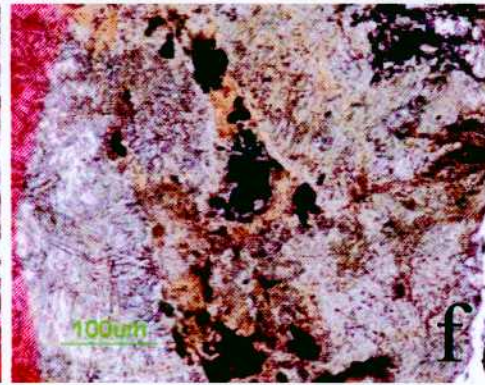
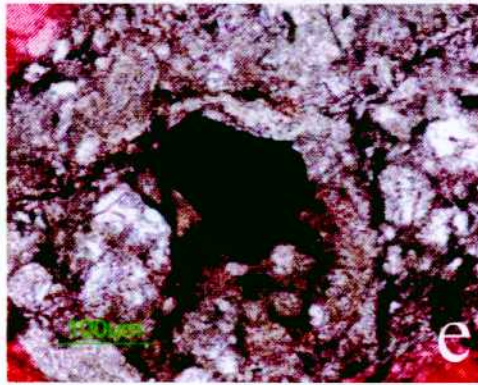
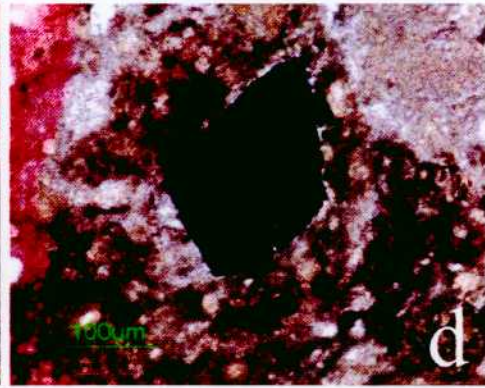
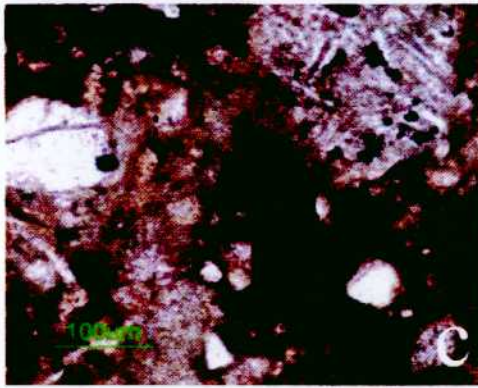
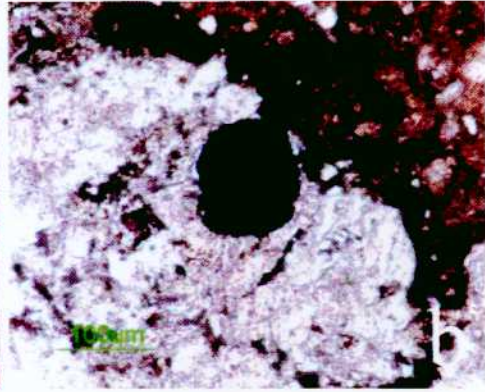
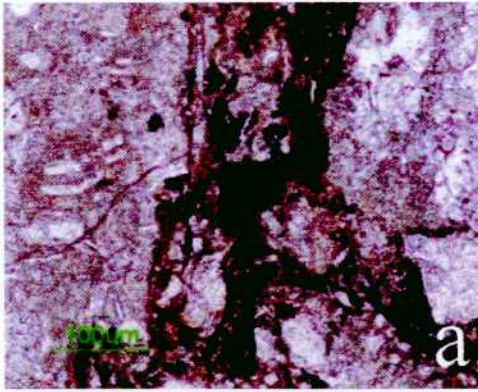


EXPLANATION OF PLATE 23

Photomicrographs of detrital chromian spinels in volcanoclastic rocks (from the Soi Dao unit)

- a : Grain no. 2-28-1+1**
- b : Grain no. 2-28-1+2**
- c : Grain no. 2-28-1+4B**
- d : Grain no. 2-28-1+7**
- e : Grain no. 2-28-1+9**
- f : Grain no. 2-28-1+11**
- g : Grain no. 2-38-1+1**
- h : Grain no. 2-38-1+3**

PLATE 23

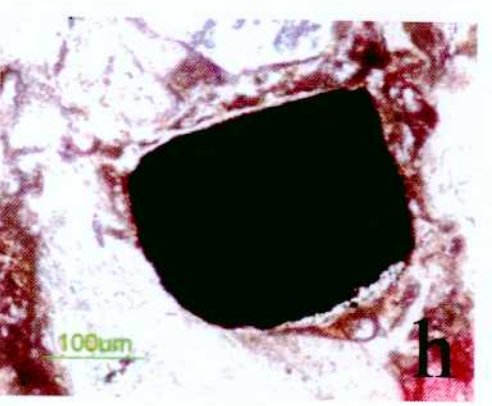
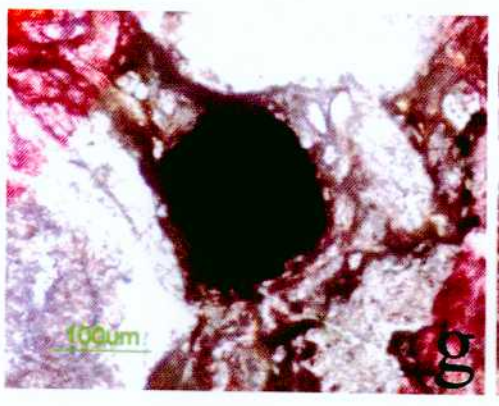
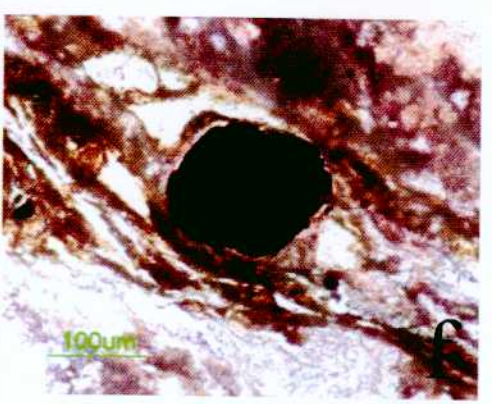
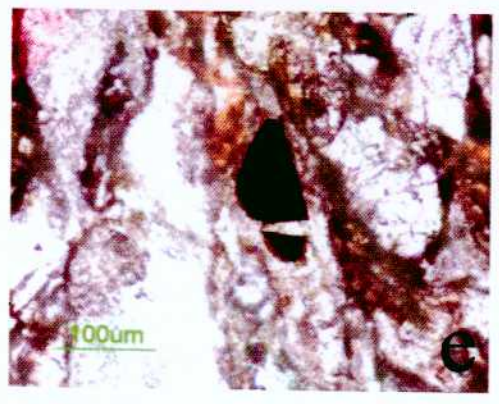
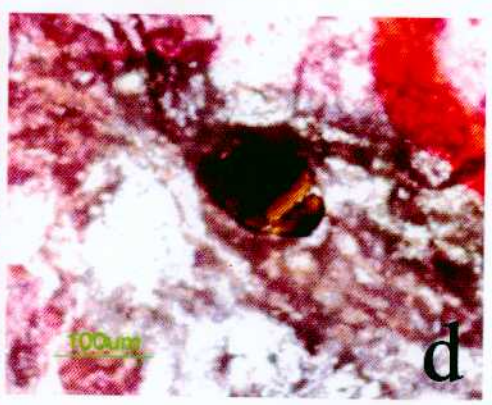
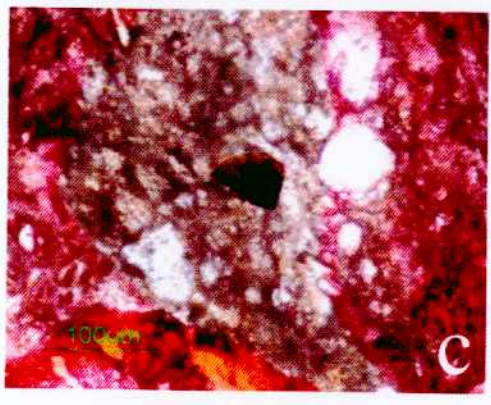
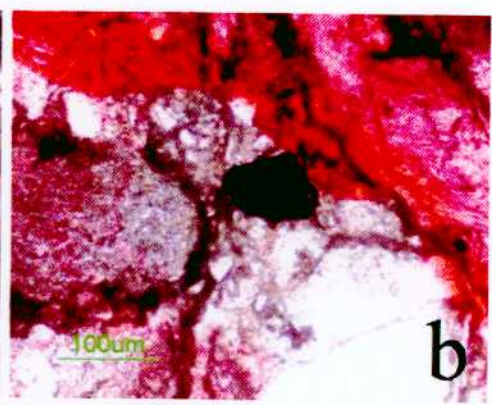
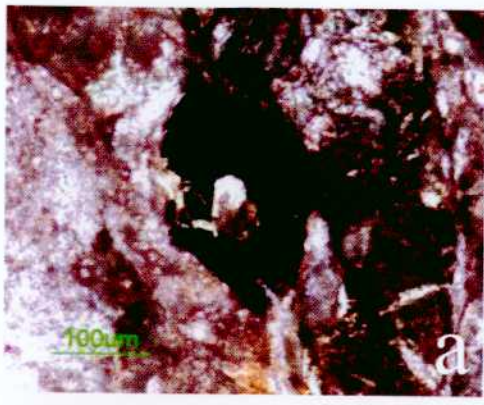


EXPLANATION OF PLATE 24

Photomicrographs of detrital chromian spinels in volcaniclastic rocks (from the Soi Dao unit)

- a : Grain no. 2-38-1+6
- b : Grain no. 2-38-1+10
- c : Grain no. 2-38-1+11
- d : Grain no. 2-38-1+13
- e : Grain no. 2-38-1+14B
- f : Grain no. 2-38-1+15
- g : Grain no. 2-38-1+17
- h : Grain no. 2-38-1+30A

PLATE 24

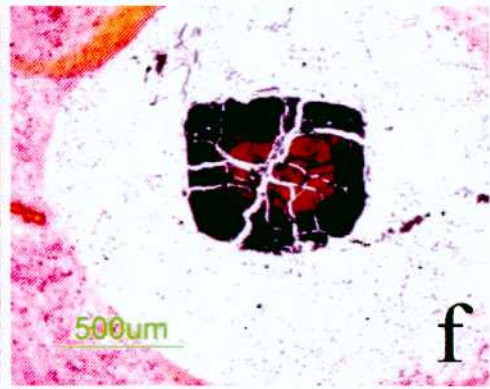
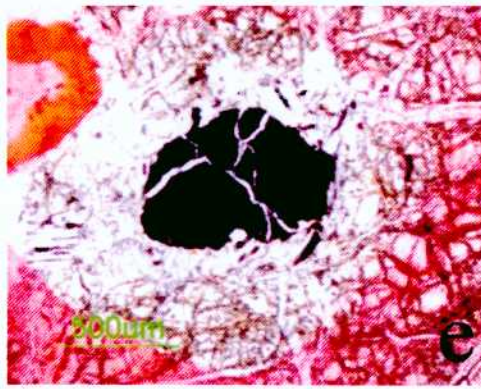
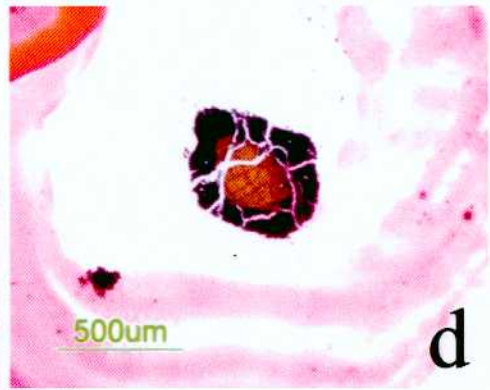
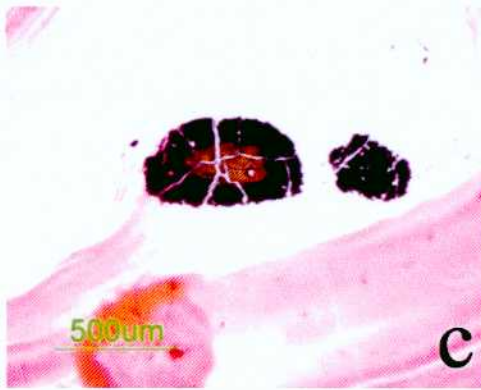
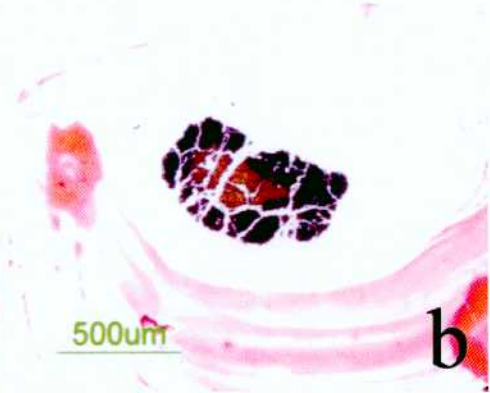
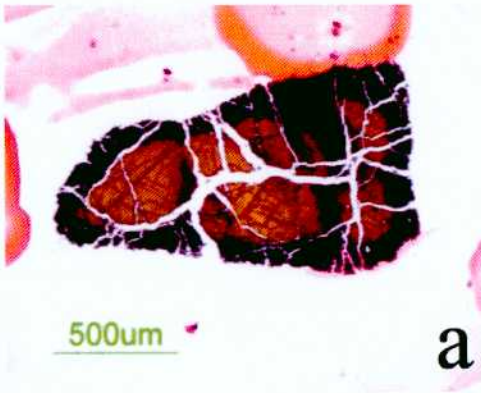


EXPLANATION OF PLATE 25

Photomicrographs of chromian spinels in serpentinites (from the Khao Prik unit)

- a : Grain no. 2-5-2+1
- b : Grain no. 2-5-2+2
- c : Grain no. 2-5-2+3
- d : Grain no. 2-5-2+5
- e : Grain no. 2-5-2+11
- f : Grain no. 2-5-2+13

PLATE 25

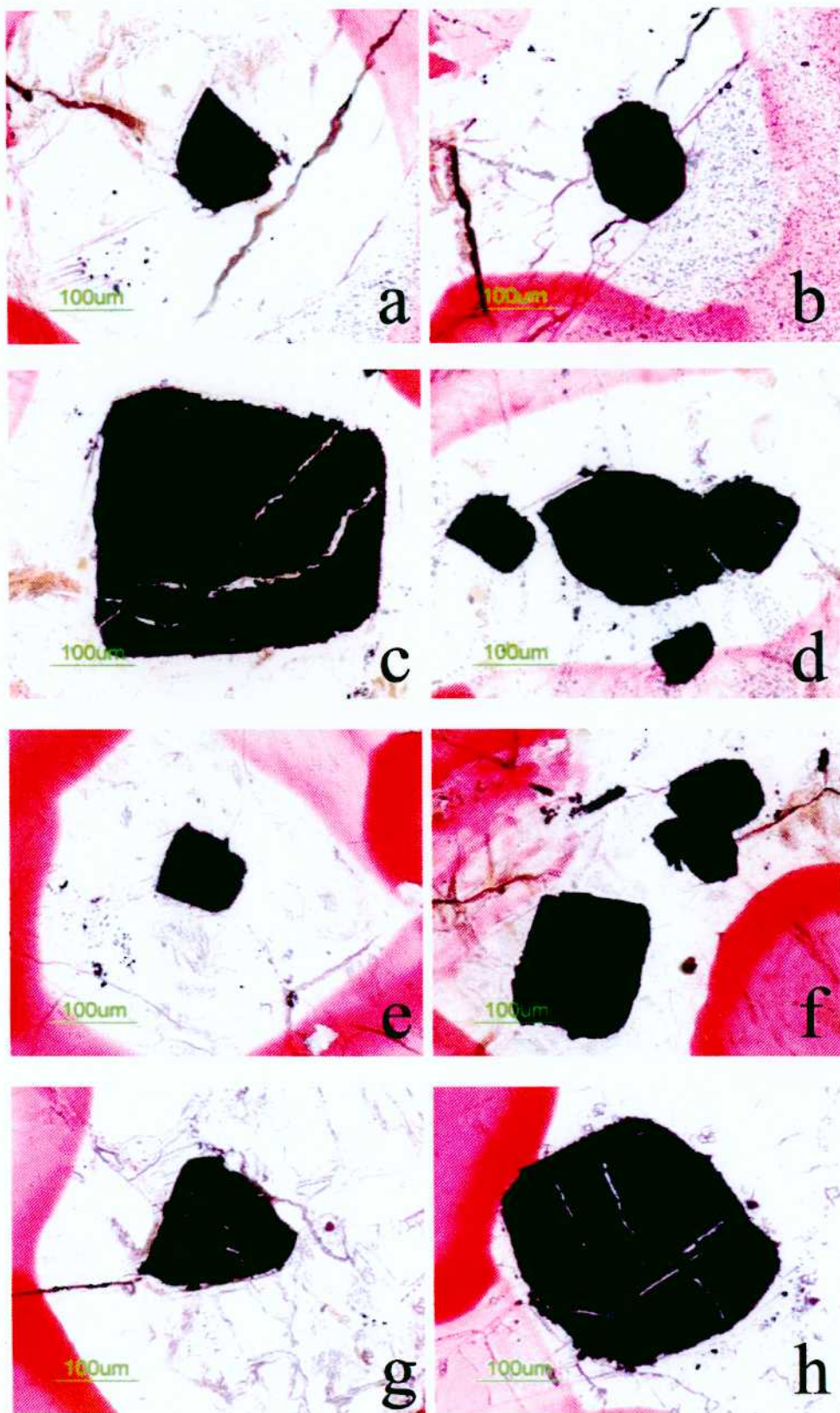


EXPLANATION OF PLATE 26

Photomicrographs of chromian spinels in serpentinites (from the Khao Hleam unit)

- a : Grain no. 2-89A-1+2
- b : Grain no. 2-89A-1+3
- c : Grain no. 2-89A-1+5
- d : Grain no. 2-89A-1+6
- e : Grain no. 2-89A-1+7
- f : Grain no. 2-89A-1+10
- g : Grain no. 2-89A-1+18
- h : Grain no. 2-89A-1+20

PLATE 26

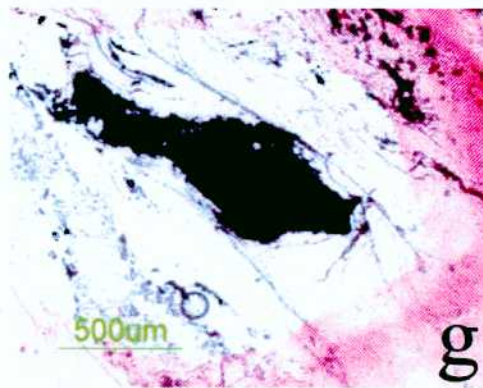
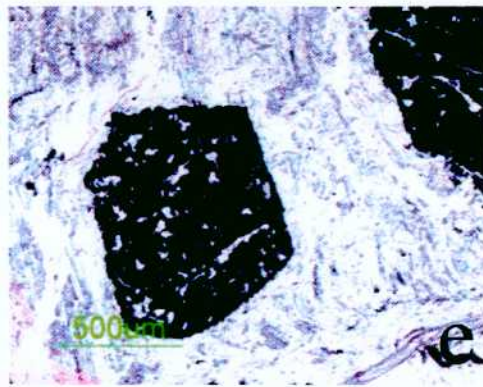
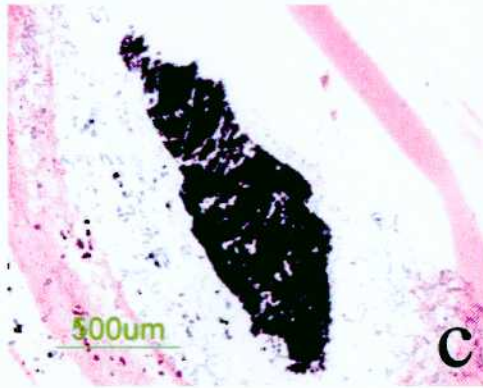
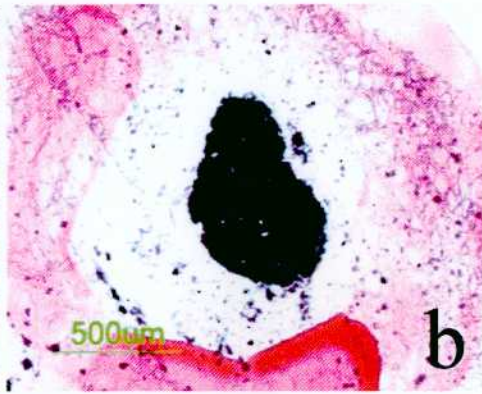
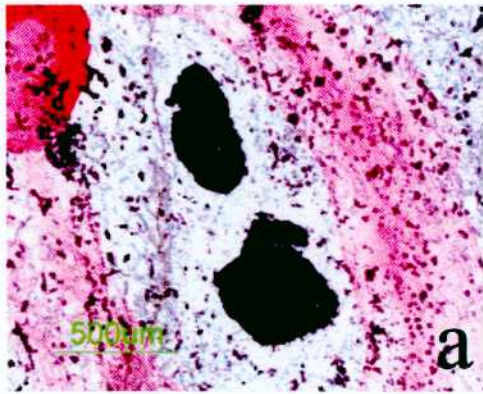


EXPLANATION OF PLATE 27

**Photomicrographs of chromian spinels in serpentinites (from the
Soi Dao unit)**

- a : Grain no. 6-33-2+14**
- b : Grain no. 6-33-2+15**
- c : Grain no. 6-33-2+16**
- d : Grain no. 6-36-2+9**
- e : Grain no. 6-36-2+13**
- f : Grain no. 6-36-2+14**
- g : Grain no. 6-36-2+25**

PLATE 27



EXPLANATION OF PLATE 28

Photomicrographs of chromian spinels in serpentinites (from the
Soi Dao unit)

- a : Grain no. 6-38-1+1
- b : Grain no. 6-38-1+2
- c : Grain no. 6-38-1+4
- d : Grain no. 6-38-1+5
- e : Grain no. 6-38-1+6
- f : Grain no. 6-38-1+7

PLATE 28

