



Article

Characterization of Osteoarthritis in a Medial Meniscectomy-Induced Animal Model Using Contrast-Enhanced X-ray Microtomography

Takehito Sugasawa ^{1,†}, Tomoaki Kuji ^{2,†}, Kai Aoki ^{2,†}, Koki Yanazawa ³, Akiko Takenouchi ⁴, Makoto Watanabe ^{4,5}, Yoshiya Tome ⁶, Yoshinori Takeuchi ⁷, Yuichi Aita ⁷, Naoya Yahagi ⁷, Yasuhiro Shishikura ³, Seiko Ono ¹, Yasuko Yoshida ⁶, Yasushi Kawakami ¹ and Kazuhiro Takekoshi ^{1,*}

¹ Laboratory of Laboratory/Sports Medicine, Division of Clinical Medicine, Faculty of Medicine, University of Tsukuba, 1-1-1 Tennodai, Tsukuba, Ibaraki 305-8577, Japan; take0716@krf.biglobe.ne.jp (T.S.); jimbeamilkybonbon330@gmail.com (S.O.); y-kawa@md.tsukuba.ac.jp (Y.K.)

² Doctoral Program in Sports Medicine, Graduate School of Comprehensive Human Sciences, University of Tsukuba, 1-1-1 Tennodai, Tsukuba, Ibaraki 305-8577, Japan; s1930394@s.tsukuba.ac.jp (T.K.); fineday0126@gmail.com (K.A.)

³ Master's Program in Medical Sciences, Graduate School of Comprehensive Human Sciences, University of Tsukuba, T1-1-1 Tennodai, Tsukuba, Ibaraki 305-8577, Japan; s1921312@s.tsukuba.ac.jp (K.Y.); s1921290@s.tsukuba.ac.jp (Y.S.)

⁴ Bonding and Manufacturing Field, Research Center for Structural Materials, National Institute for Materials Science, 1-2-1 Sengen, Tsukuba, Ibaraki 305-0047, Japan; TAKENOUCHI.Akiko@nims.go.jp (A.T.); WATANABE.Makoto@nims.go.jp (M.W.)

⁵ Research Center for Advanced Science and Technology, The University of Tokyo, 4-6-1 Komaba, Meguro-ku, Tokyo 153-8904, Japan

⁶ Department of Medical Technology, Faculty of Health Sciences, Tsukuba International University, 6-20-1 Manabe, Tsuchiura, Ibaraki 300-0051, Japan; tome@tius.ac.jp (Y.T.); y-yoshida@tius.ac.jp (Y.Y.)

⁷ Nutrigenomics Research Group, Faculty of Medicine, University of Tsukuba, 1-1-1 Tennodai, Tsukuba, Ibaraki 305-8577, Japan; yoshinori-takeuchi@umin.ac.jp (Y.T.); metabmetabmetab@gmail.com (Y.A.); nyahagi-tky@umin.ac.jp (N.Y.)

* Correspondence: k-takemd@md.tsukuba.ac.jp

† These authors contributed equally to this work.

Received: 8 February 2020; Accepted: 3 March 2020; Published: 10 March 2020



Abstract: The aim of this study was to clarify degradation characteristics in each tissue of the knee complex of a medial meniscectomy (MMx)-induced knee osteoarthritis (KOA) animal model using classical methods and an alternative comprehensive evaluation method called contrast-enhanced X-ray micro-computed tomography (CEX- μ CT), which was developed in the study. Surgical MMx was performed in the right knee joints of five male Wistar rats to induce KOA. At four weeks post-surgery, the synovitis was evaluated using quantitative polymerase chain reaction (qPCR). Degradations of the articular cartilage of the tibial plateau were evaluated using classical methods and CEX- μ CT. Evaluation of the synovitis demonstrated significantly increased expression levels of inflammation-associated marker genes in MMx-treated knees compared with those in sham-treated knees. Evaluation of the articular cartilage using classical methods showed that MMx fully induced degradation of the cartilage. Evaluation using CEX- μ CT showed that local areas of the medial cartilage of the tibial plateau were significantly reduced in MMx-treated knees compared with those in sham-treated knees. On the other hand, total cartilage volumes were significantly increased in MMx-treated knees. On the basis of the findings of this study, the method could be relevant to study new treatments in KOA research.

Keywords: osteoarthritis; synovitis; articular cartilage; microfocus X-ray CT; 3D analysis

1. Introduction

The prevalence of osteoarthritis (OA) in humans has been rapidly increasing owing to an aging population and a rise in obesity rates [1]. OA is characterized by chronic pain, dysfunction of joint, and tissue degradation of joint cartilage and subchondral bone with synovitis [2]. Knee OA (KOA) causes high morbidity and is recognized as the most common type with a prevalence of 80% among all OA [1]. Advanced KOA causes severe pain and significant limitations in daily life [3]. For severe KOA, if the symptoms are not relieved by exercise and intra-articular injection of hyaluronic acid, knee replacement using an artificial knee joint is often performed [3].

Studies on the development of drugs to treat KOA are often performed using animal models. Evaluation of joint cartilage is considered critical as the primary tissue degradation in KOA animal models that mimic human KOA occurs in this tissue; however, many studies have been limited. For example, in some KOA animal studies, only local assessment of the cartilage has been done using tissue sections and staining methods to assess cartilage degeneration quantitatively [4–7]. In addition, microscopic evaluation using India ink staining to confirm cartilage degradation in KOA animal models has demonstrated localized positive and non-positive areas [8–10]. It is also difficult to excise a limited range of denaturation sites, such as India ink positive areas, during tissue sectioning for histological examination with precise targeting without a deviation of several μm . Furthermore, if tissue slice preparation fails, it cannot be redone. One way to solve this problem is to make dozens of tissue sections by microtome per sample with no fails, integrate them, and analyze them. However, this method takes a lot of time and remarkable technique and is not practical if dozens of samples are analyzed.

Furthermore, when evaluating multiple individuals, it is almost impossible to exactly excise the same part for all individuals, which results in poor reproducibility. Therefore, it is unclear whether lesion sites are accurately captured and evaluated using tissue staining methods.

It is necessary to perform a comprehensive evaluation of the KOA model, including its reproducibility, in order to understand the pathophysiology of cartilage degradation in detail. In addition, evaluation of subchondral bone and synovium is also important as these tissues are degraded in human KOA and KOA animal models [2]. Xie et al. [11] and Willett et al. [12] have previously described the method of equilibrium partitioning of an ionic contrast agent via microcomputed tomography (EPIC- μCT), which can quantify total and local volumes and determine the quality of articular cartilage in a small animal model with high precision and accuracy. However, the ionic compound ioxaglic acid (Hexabrix; Mallinckrodt), which is the contrast agent used in this method, is difficult to obtain in Japan.

Therefore, in the current study, we developed a method using μCT and the nonionic alternative contrast agent iopamidol (Oypalomin; Fuji Pharma) to evaluate articular cartilage comprehensively. This method was named contrast-enhanced X-ray micro-computed tomography (CEX- μCT). The ancillary aim of the current study was to establish a foundation for CEX- μCT as a method to comprehensively evaluate articular cartilage. The primary aim was to apply CEX- μCT and classical methods to clarify the degradation characteristics of articular cartilage, subchondral bone, and synovium in the knee complex of a medial meniscectomy (MMx)-induced KOA animal model of post-traumatic OA.

2. Materials and Methods

2.1. Animal Experiments

Three male Wister rats (Japan SLC) at 10 weeks of age (242–283 g) were used to establish the foundation of the CEX- μCT methodology. The rats were euthanized by excess inhalation of isoflurane and the right and left knee complexes were then harvested for use as normal samples. The tissue specimens were immersed in 10% neutral buffered formalin solution (Fujifilm, Wako, Osaka, Japan) for 48 h at room temperature with gentle shaking. After 48 h of fixations, the samples ($n = 6$ knees) were subjected to analysis.

Another five male Wister rats at 5 months of age (371–410 g) underwent MMx surgery to establish the KOA model. The surgery was performed according to the method reported by Yanagisawa et al. [13]. Briefly, while anesthetized by isoflurane inhalation, a skin incision of approximately 2 cm was made in the right knee, the patella and patellar tendon were then laterally dislocated, and a joint capsule incision was made. The meniscus was destabilized by truncating the cranial tibia ligament, and the medial meniscus was removed by cutting the part adhering to the medial collateral ligament (Figure 1A). Finally, the fascia and the skin were stitched. For the left knee, which underwent sham surgery and was used as a control, only the incision was made. At four weeks post-surgery, the rats were euthanized by excess inhalation of isoflurane. After removal of the patella tendon, the synovium, including the infrapatellar fat pad (IFP), was harvested for evaluation of inflammatory marker genes and cartilage degradation (Figure 1B). The synovium was quickly placed in liquid nitrogen and stored at -80°C until further analysis. The knee complex was also harvested and immersed to 10% neutral buffered formalin solution and incubated for 48 h at room temperature with gentle shaking. After 48 h of fixation, the knee complex underwent subsequent analysis. These animal experiments were approved by the Animal Care Committee, University of Tsukuba (approval numbers: 19-164, 1 June 2019).

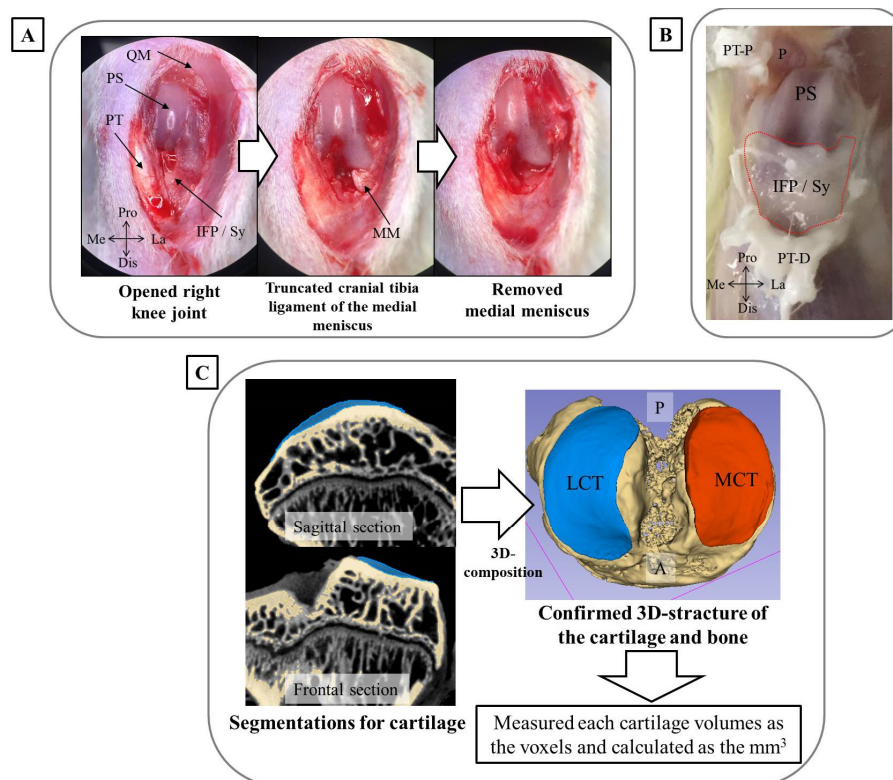


Figure 1. Experimental methodology used in the current study. (A) Surgery performed to establish medial meniscectomy (MMx)-induced knee osteoarthritis (KOA) in the right knee. The left figure shows the skin incision and internal knee joint with a laterally dislocated patella. The middle figure shows a destabilized meniscus generated by truncating the cranial tibia ligament of the medial meniscus. The right figure shows the removed meniscus of the part adhering to the medial collateral ligament. (B) The methodology used to harvest IFP and synovium. After removal of the patella tendon, the IFP (indicated by the red dotted line) was harvested using a surgical knife. (C) The methods for segmentation of the cartilage and subchondral bone and calculation of cartilage volume using contrast-enhanced X-ray micro-computed tomography (CEX- μ CT) images and 3D slicer software. Abbreviations: QM, quadriceps muscle; PS, patellar surface; PT, patellar tendon; IFP, infrapatellar fat pad; Sy, synovium; Pro, proximal; Dis, distal; La, lateral; Me, medial; MM, medial meniscus; P, patella; PT-P, patellar tendon-proximal; PT-D, patellar tendon-distal; LCT, lateral articular cartilage of tibia plateau; MCT, medial articular cartilage of tibia plateau; A, anterior; P, posterior.

2.2. Establishing the Foundation of the CEX- μ CT Method

After fixation of the normal knee complexes, the knee joints were separated, and soft tissues were removed. The tibias, including the articular cartilage, was then immersed in Oypalomin (0%, 10%, 20%, 30%, 40%, and 50% each, total of six conditions) diluted with phosphate-buffered saline (PBS) and incubated overnight at room temperature. The following day, after thoroughly wiping the remaining liquid off of the tibias, the samples were placed in 15 mL centrifuge tubes and X-ray μ CT scans were performed using an SMX-160CTS micro-focus X-ray system (Shimazu Corporation). The following apparatus parameter settings were used:

1. Source-to-image distance (SID): 200 mm
2. Source-to-object distance (SOD): 40 mm
3. Tube voltage: 47 kV
4. Number of views: 1200
5. Scaling coefficient: 1200
6. Image sharp: 512
7. Widthwise pixel spacing (mm/pixel): 0.021181
8. Lengthwise pixel spacing (mm/pixel): 0.021181
9. Saved image type: TIF 16-bit

The frontal section of articular cartilage and subchondral bone of tibias were analyzed using the volume viewer plugin of the ImageJ Fiji ver. 1.52p software [14]. The brightness of refracted X-ray for both the articular cartilage and subchondral bone within the region of interest (ROI) were also measured using the same software to determine the optimal concentration of Oypalomin to differentiate articular cartilage and subchondral bone of the tibia. The ROIs were manually determined at medial tibial plateaus containing articular cartilage and subchondral bone.

2.3. Evaluation of Subchondral Bone in MMx-Induced KOA Using X-ray μ CT

After fixation of the MMx-induced KOA model knee complexes, they were subjected to X-ray μ CT analysis to evaluate the degradation of subchondral bone. The samples were placed in 50 mL centrifuge tubes, and X-ray μ CT analyses were performed using the same methods and parameters listed above, except the SOD was changed to 100 mm. The subchondral bone of the knee complex was imaged utilizing the volume viewer plugin of the ImageJ Fiji ver.1.52p software using the X-ray μ CT image, the projection image, 3D images, and section image views [14]. The subchondral bone changes caused by MMx-induced KOA were morphologically analyzed.

2.4. CEX- μ CT Analysis of MMx-Induced KOA

After performing X-ray μ CT analysis of the subchondral bones from MMx-treated mice, the knee complexes were separated into the tibia fully removed soft tissues. On the basis of the results of Section 2.2, the optimal concentrations of Oypalomin was 30%. Therefore, the tibias from MMx-induced KOA mice were immersed overnight in 30% Oypalomin. The following day, after thoroughly wiping the remaining liquid off the tibias, the samples were placed in 15 mL centrifuge tubes, and X-ray μ CT scans were performed as described in Section 2.2. The subchondral bone of the knee complex was imaged utilizing the volume viewer plugin of the ImageJ Fiji ver.1.52p software using the X-ray μ CT image, the projection image, 3D images, and section image views [14]. Using the 3D images, we confirmed whether to reflect the form under the stereomicroscope.

Furthermore, the frontal section images were generated from the 3D images using the same plugin of the same software. The articular cartilage pixel area of the medial tibial plateau was measured and confirmed to correlate with the area of articular cartilage obtained by tissue staining and microscopic observation.

Segmentation analysis was also performed after the reconstruction of the 3D images using 3D slicer software ver. 4.10.1. with the Segment Editor plugin to differentiate the cartilage and subchondral bone. The total voxels of the articular cartilage were then measured using the Segment Statistics plugin in the same software. The total voxels were converted to a volume (mm^3) to comprehensively evaluate the articular cartilage, which could be used to quantify total cartilage volumes (Figure 1C).

2.5. Macroscopic Imaging of Articular Cartilage in MMx-Induced KOA

After performing the CEX- μ CT analysis, macroscopic images were obtained to evaluate articular cartilage degradation with or without India ink stain. The osteophyte and gross finding score and India ink-positive area were measured according to the method of Yanagisawa et al. [13].

2.6. Histological Analyses

After macroscopic imaging, the tibias were immersed in Kalkitox decalcification solution (Fujifilm, Wako, Osaka, Japan) for 48 h at 4 °C. The samples were then embedded in paraffin, followed by neutralization with 5% sodium sulfate solution. Frontal sections (5 μm) of each sample were prepared that included a region of severe degradation. Safranin-O and Fast Green staining were then performed. Photomicrographs of the stained tissues were obtained on a BZ-X710 fluorescence microscope (Keyence, Osaka, Japan) and the Safranin-O-positive areas (pixels) were calculated using the ImageJ Fiji ver.1.52p software [14]. The Osteoarthritis Research Society International (OARSI) guideline scores [15] for the refracture of articular cartilage degradation were calculated in a double blind manner using the photomicrographs separated one-third on the medial side and two-thirds on the lateral side. The correlation between the articular cartilage areas (pixels) of the medial tibial plateau obtained by tissue staining and CEX- μ CT method was confirmed to evaluate the accuracy of the CEX- μ CT method.

2.7. Evaluation of Synovitis by Quantitative Real-Time Polymerase Chain Reaction (qPCR)

Synovitis-associated gene expression measured using qPCR. The synovium was homogenized in Sepasol-RNA I Super G (Nacalai Tesque, Kyoto, Japan), and total RNA was extracted according to the manufacturer's protocol. Then, 500 ng of total RNA was subjected to reverse transcription using PrimeScrip RT Master Mix (Takara Bio, Shiga, Japan) according to the manufacturer's protocol to generate complementary DNA (cDNA). The cDNA was serially diluted 10-fold with sterilized distilled water and qPCR was performed to detect the expression of synovitis-associated marker genes. The qPCR reaction mixture (10 μL) was prepared using a KAPA SYBR Fast qPCR Kit (Nippon Genetics, Tokyo, Japan) according to the manufacturer's protocol. Specific primers were used at final concentrations of 100 nM. Amplification was performed using a QuantStudio 5 Real-Time PCR Systems thermal cycler (Thermo Fisher Scientific, Waltham, MA, USA). The cycling profile included one cycle of 95 °C for 5 min, followed by 40 cycles of 95 °C for 3 s and 60 °C for 30 s, with a final stage of melting curve analysis. Hypoxanthine phosphoribosyltransferase (HPRT) RNA expression was also measured and used as the internal sample control. The value of each gene expression was calculated using the $2^{-\Delta\Delta\text{Ct}}$ method and normalized to HPRT levels. The primer sequences and targeted gene names are shown in Supplemental Table S1.

2.8. Statistical Analyses

Data are presented as means \pm standard deviation (SD). The paired *t*-test for the Sham (left) versus MMx (right) knee was performed for comparison between two groups using Excel 2010 software (Microsoft). For the analysis of OARSI scores for four groups, the Bonferroni correction was performed as multiple comparisons. Pearson's correlation coefficient on the area of articular cartilage between stained tissue and CEX- μ CT analysis was also calculated using the same software. $p < 0.05$ was considered statistically significant.

3. Results

3.1. Optimal Oypalomin Concentration for CEX- μ CT Was 30%

In establishing the foundation for the CEX- μ CT method, articular cartilage from the tibia plateau was stained using various concentrations of Oypalomin. Neither 0% or 10% Oypalomin allowed for the depiction of articular cartilage from the medial tibial plateau. On the other hand, both 20% and 50% Oypalomin could allow for visualization of the articular cartilage and provided adequate contrast between the bone and cartilage (Figure 2A). Analysis of brightness refracted to determine the X-ray absorption differences between bone and cartilage demonstrated that 30% Oypalomin was the optimal concentration to differentiate cartilage and bone (Figure 2B).

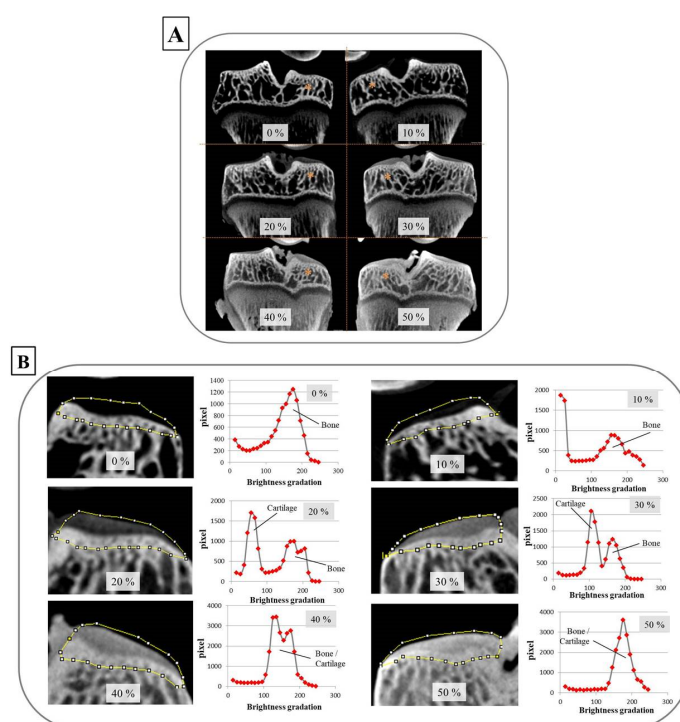


Figure 2. The optimal concentration of Oypalomin for CEX- μ CT was 30%. (A) The overall image of tibia frontal sections with the indicated concentrations (%) of Oypalomin. Staining of the articular cartilage of the tibial plateau was dependent on the Oypalomin concentrations. The asterisks indicate the medial tibial condyle. (B) Brightness measurements reflected X-ray absorptions of the articular cartilage and subchondral bone. The regions of interest (ROIs) surrounded by the yellow line were determined manually. Brightness and pixels within the ROI are plotted as histograms. The optimal concentration of Oypalomin to differentiate cartilage and bone was 30%.

3.2. Subchondral Bone Degradation Was Not Discovered by MMx-Induced KOA According to the X-ray μ CT Analyses

In the evaluations of subchondral bone using X-ray μ CT, the bone degradation was not morphologically discovered upon MMx-treated knees on the projection, 3D, or sectional views. The only notable observation was the disappearance of the meniscus of the right knee following MMx treatment (Figure 3A–C).

3.3. MMx-Treated Knees Showed Articular Cartilage Degradation on Macroscopic Imaging

Analyses using macroscopic imaging with or without India ink stain fully confirmed the degradation of articular cartilage (Figure 4A). The gross finding scores, osteophyte scores, and India ink-positive areas were all significantly increased in MMx-treated knees compared with those in

sham-treated knees (Figure 4B–D). In the 3D reconstruction of the articular cartilage using the CEX- μ CT method, the cartilage degeneration corresponding to macroscopic images was morphologically faithfully reproduced (Figure 4A).

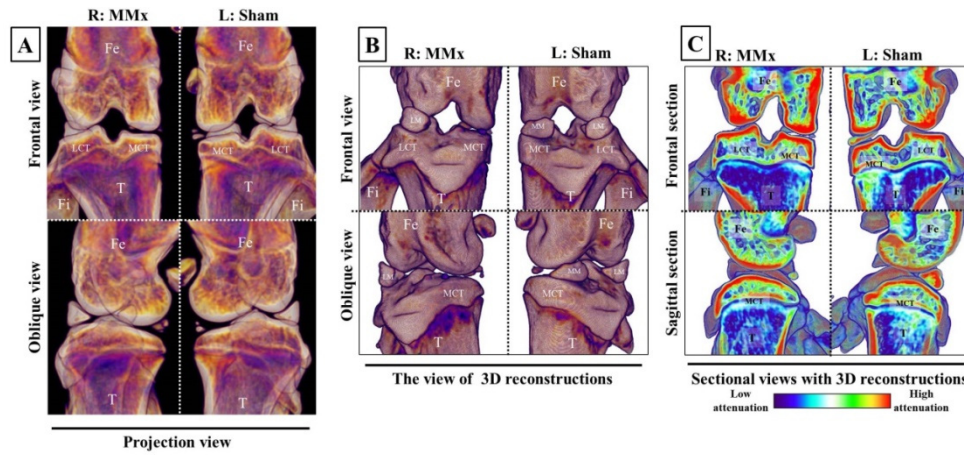


Figure 3. Images of subchondral bones in the knee complex on X-ray μ CT analyses. The pictures show representative examples of projection (A), 3D (B), and sectional (C) views on X-ray μ CT analyses. No changes in the subchondral bones of MMx-treated knees compared with that of sham-treated knees were noted. Abbreviations; Fe, femur; LCT, lateral condyle of tibia; MCT, medial condyle of tibia; T, tibia; Fi, fibula; LM, lateral meniscus; MM, medial meniscus.

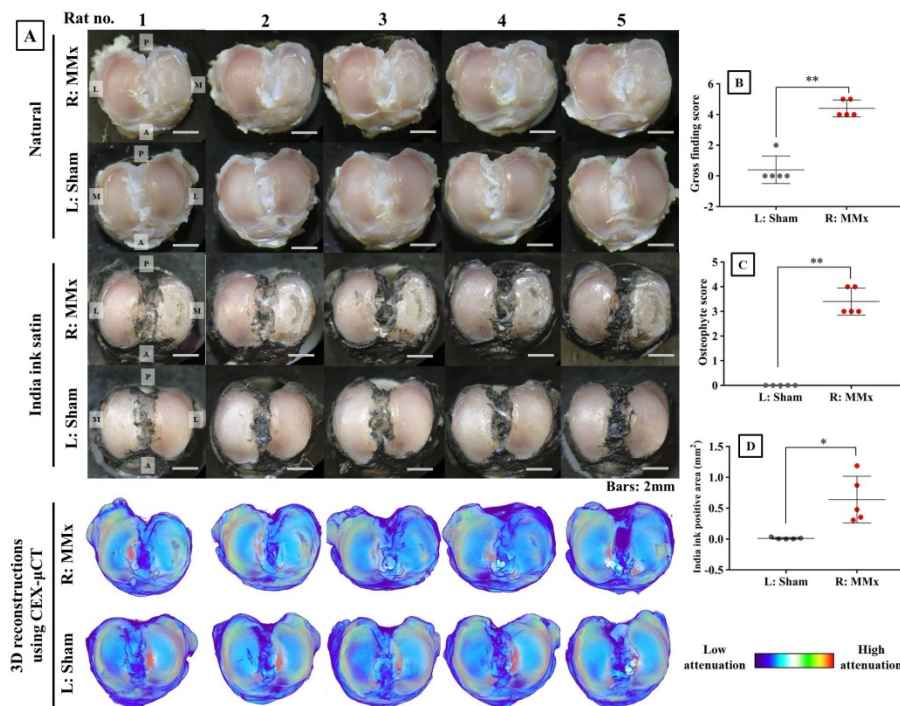


Figure 4. Analyses of macroscopic imaging and 3D reconstruction images using the CEX- μ CT method. (A) Macroscopic images with or without India ink staining and 3D reconstruction images using the CEX- μ CT method of all the samples. (B) Gross finding score for the articular cartilage stained by India ink. (C) Osteophyte score for the non-stained articular cartilage. (D) India ink-positive area for the articular cartilage stained by India ink. Abbreviations: P, posterior; A, anterior; M, medial; L, lateral. * $p < 0.05$, ** $p < 0.01$.

3.4. MMx-Treated Knees Showed Articular Cartilage Degradation Using Either Tissue Staining or CEX- μ CT Analyses

Tissue staining of articular cartilage clearly demonstrated degeneration based on the decreased Safranin-O-positive area (Figure 5A). Moreover, CEX- μ CT also revealed a reduced area of cartilage with matched CEX- μ CT images and stained tissue images being consistent. In addition, the quantitative values of the cartilage area were significantly decreased on both tissue stain and CEX- μ CT analyses (Figure 5C,D), which further supported the similarity between methods. The OARSI guideline scores were significantly increased in MMx-treated knees compared with those of sham-treated knees, which was more severe on the lateral two-thirds side of the MMx-treated knees (Figure 5B). Correlation analysis between cartilage areas obtained from Safranin-O staining and CEX- μ CT imaging showed a strong significant correlation ($R = 0.938$) (Figure 5E).

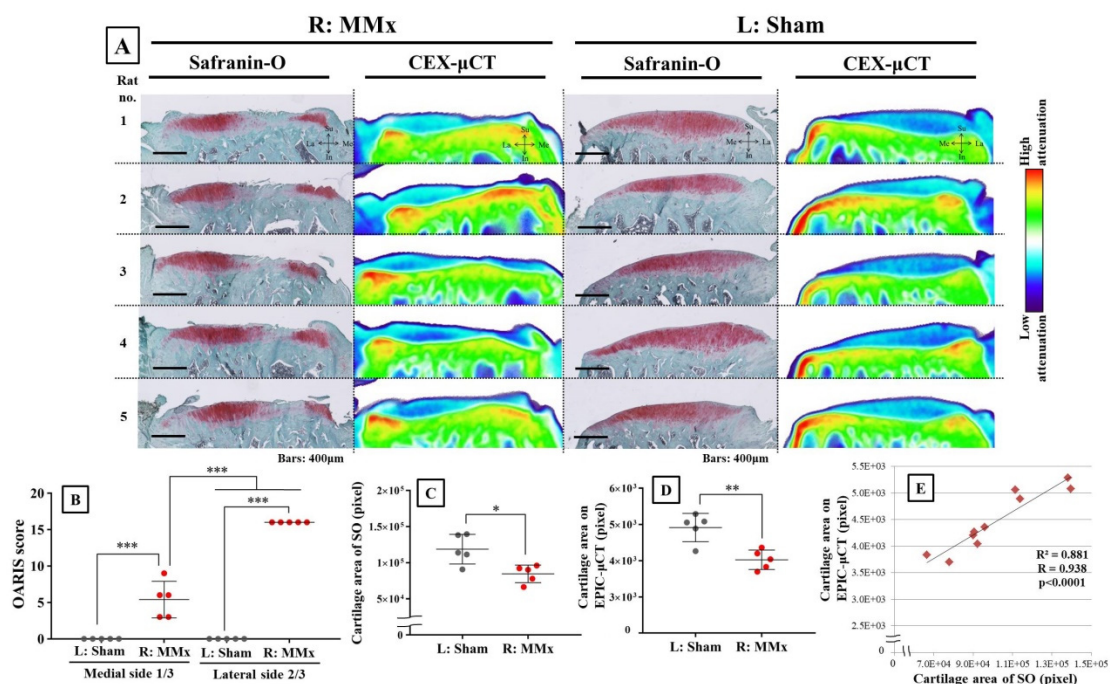


Figure 5. Confirmed degradation of articular cartilage by both Safranin-O (SO) staining and CEX- μ CT imaging for all samples. (A) Comparison between Safranin-O staining and CEX- μ CT imaging of articular cartilage on the tibia medial plateau. Both methods show cartilage degradation with similar morphology. (B) Osteoarthritis Research Society International (OARSI) guideline scores for Safranin-O staining in both MMx-treated and sham-treated groups. (C) Cartilage area based on Safranin-O-positive staining for both MMx-treated and sham-treated groups. (D) Cartilage area (pixels) according to CEX- μ CT method for both MMx-treated and sham-treated groups. (E) Correlation analysis of the cartilage area between both Safranin-O staining and CEX- μ CT imaging methods. * $p < 0.05$, ** $p < 0.01$, *** $p < 0.001$.

3.5. MMx-Induced KOA Increased Total Cartilage Volumes

Using images from the CEX- μ CT imaging method, the articular cartilage and subchondral bone were fully reconstructed as 3D images (Figure 6A). The cartilage volumes of the medial tibial plateau were significantly increased in the MMx-treated knees compared with those of the sham-treated knees (Figure 6B). In contrast, no changes were observed in the lateral cartilage volumes.

3.6. MMx-Treatment-Induced Gene Expression Associated with Knee Synovitis

Analyses of the synovium using qPCR revealed that some gene expression associated with synovitis was significantly changed in the MMx-induced KOA knees compared with that in the

sham-treated knees (Figure 7A–F). Among the differentially regulated genes, *Mcp1* and *Mcp3* are markers for macrophages (Figure 7B), *Ki67* is a cell proliferation marker (Figure 7C), *Cal1a1* and *Tgfβ-1* are fibrillation markers (Figure 7D), *IL-1β* is an inflammatory cytokine (Figure 7E), and *Mmp3* is a cartilage degradation maker (Figure 7F). All these genes reflected significant changes in expression levels, which reflected synovitis in the synovium of MMx-treated knees. Also, expression levels of *Vim* and *Snail1*, which are epithelial-mesenchymal transition markers, were significantly increased in the MMx-treated knees compared with those in the sham-treated knees (Figure 7A).

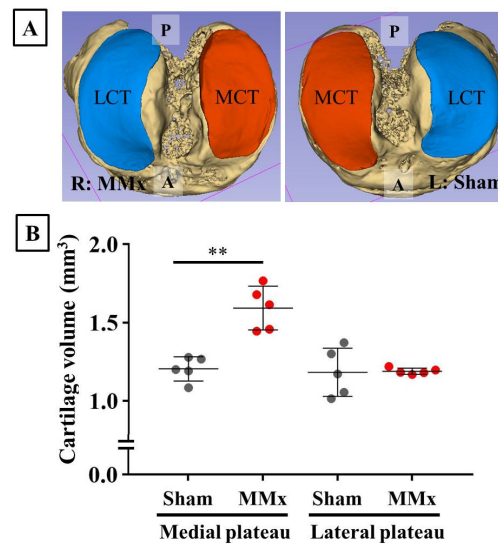


Figure 6. Reconstruction and volume calculation of the articular cartilage and subchondral bone using the CEX-μCT imaging method. (A) A representative case of reconstructed articular cartilage and subchondral bone. (B) Comparison of cartilage volumes between MMx-treated and sham-treated knees. The medial cartilage volumes were significantly increased in the MMx-treated knee compared with that in the sham-treated knee. Abbreviations: P, posterior; A, anterior; MCT, medial cartilage of the tibial plateau; LCT, lateral cartilage of the tibia plateau. ** $p < 0.01$ on paired t -test.

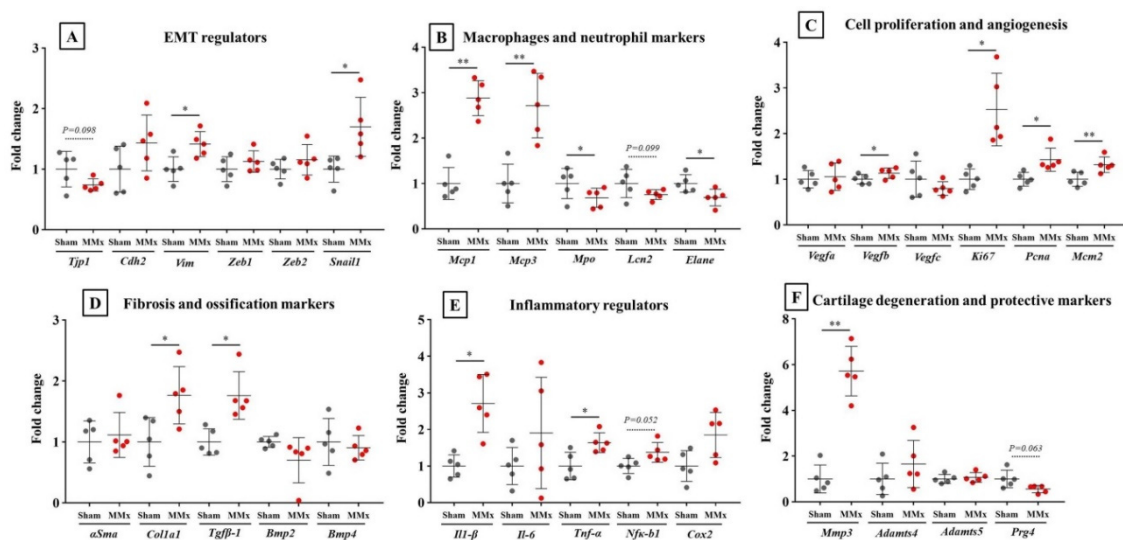


Figure 7. Synovitis-associated gene expression levels in the synovium. (A–F) Gene expression levels of synovitis-associated genes. * $p < 0.05$, ** $p < 0.01$ on paired t -test. EMT, epithelial–mesenchymal transition.

4. Discussion

In the current study, an aim was to establish the foundation for the CEX- μ CT imaging method in order to use it to comprehensively evaluate articular cartilage. We determined that 30% Oypalomin was the optimal concentration to differentiate cartilage and bone. Subsequently, 3D images of the articular cartilage and subchondral bone obtained using the CEX- μ CT method with 30% Oypalomin were constructed. The 3D images obtained with CEX- μ CT showed the same morphology as that of the cartilage in the normal and MMx-induced KOA model based on comparing them to the more traditional macroscopic images. Also, the area of cartilage determined using the CEX- μ CT method showed a strong correlation to the area measured using Safranin-O tissue staining. Moreover, the changes in cartilage localization in MMx-induced KOA could be detected using the CEX- μ CT method. Therefore, the CEX- μ CT method that was developed in this study reflected overall articular cartilage health with respect to evaluating cartilage. Furthermore, the CEX- μ CT method with 30% Oypalomin may be comparable to the EPIC- μ CT method reported by Xie et al. [11] and Willett et al. [12].

Previously, studies using KOA animal models have relied on tissue staining analyses that require relatively large amounts of time to obtain the microscopic images. For example, there are many processes that involve extensive time, such as paraffin embedding, tissue sectioning using a microtome or cryostat, and tissue staining. These not only require delicate finesse and professional techniques, but are also unforgiving, often making it difficult to be able to start over. Moreover, focusing on a thin slice method for paraffin-embedded and frozen blocks, it is difficult to exactly cut the same part between different samples, which may result in reproducibility problems. In contrast, when preparing cartilage samples for the CEX- μ CT method developed in this study, there was no required technique that would hinder reproducibility. However, a crucial drawback to the CEX- μ CT method is the requirement for a μ CT apparatus, which is a specialized and expensive system.

It was the main aim of the current study to clarify the characteristics of degradations in articular cartilage, subchondral bone, and synovium in the knee complex of a post-traumatic OA animal model, in which KOA was induced by MMx, using the newly developed CEX- μ CT method in this study. In the results, it was demonstrated that the cartilage degeneration and the inflammatory reactions occurring in the synovium were increased in the MMx-induced KOA model. On the other hand, no morphological degeneration of the subchondral bone was observed. Therefore, four weeks after the induction of the MMx-KOA model, it is suggested that no significant morphological changes are observed in the subchondral bone, but significant changes are observed in the articular cartilage and synovium.

It is well known that chronic inflammation activates macrophages, rather than neutrophils, and also affects fibrosis [16,17]. In the current study, gene expression in the synovium of MMx-induced KOA demonstrated increased expression levels for inflammatory cytokines Il-1 β and Tnf- α , macrophage markers Mcp1 and Mcp3, and fibrosis markers Colla1 and Tgf β -1, without increased expression of neutrophil markers. Moreover, epithelial–mesenchymal transition (EMT) regulators Vim and Snail1 and cell growth markers Ki67, segmentation, and Mcm2 were also increased in MMx-induced KOA. EMT reactions leading to cell growth and the development of tumors are known to be exacerbated by chronic inflammations [18,19]. Therefore, it is suggested that MMx-induced KOA may induce chronic inflammation.

Mmp3 expression was markedly increased in the synovium of MMx-induced KOA with 5.7-fold mean changes compared with that of the sham-treated knees. The matrix metalloproteinase-3 (MMP3) secretions from the synovium into the joint space are induced by NF- κ B signaling in response to inflammatory reactions and can degrade articular cartilage [20]. Moreover, previous research has reported that increased MMP secretions from the synovium into the joint space in human KOA are associated with the pathogenesis of cartilage degradation [20–23]. Therefore, it can be hypothesized that, following chronic synovial inflammation, MMP3 secreted from the synovium may induce degradation of the cartilage in the MMx-induced KOA model, similar to that in human KOA. To

confirm this hypothesis, experiments using the intra-articular administration of an MMP3 inhibitor would be necessary.

IL-1 β expression was also increased in the synovium of MMx-induced KOA with a mean 2.7-fold change. IL-1 β secreted from the synovium into the joint space plays a crucial role in the pathogenesis of KOA [24]. IL-1 β induces NF- κ B signaling and the expressions of catabolic proteins for cartilage, such as MMP3 and ADAMTS proteases, which further induces the expression of inflammatory cytokines, including IL-1 β [25]. Therefore, it is possible that there is a signal axis such as “IL-1 β -NF- κ B-MMPs and IL-1 β ” in the MMx-induced KOA model that leads to the degradation of cartilage and an increase in synovitis.

The CEX- μ CT method clarified some characteristics of the MMx-induced KOA model. In the local analysis, the comparison of the calculated area of cartilage between Safranin-O staining and CEX- μ CT imaging demonstrated a strong correlation, which suggests robustness and accuracy for CEX- μ CT in measuring cartilage area and volume. Therefore, we suggest that the CEX- μ CT method may be useful for detecting the local area and total volume of cartilage. Furthermore, local analysis of the tibia plateau in MMx-induced KOA using CEX- μ CT revealed significant decreases in the area of medial cartilage, even though the overall volumes were significantly increased. On the basis of these phenomena, it is possible that chondrocytes of the articular cartilage become hypertrophic in non-abrasion areas. Chondrocytes becoming hypertrophic is known to be a pathogenic factor of KOA [26]. Therefore, to precisely evaluate overall articular cartilage degradation, it is important to employ the combination of analysis on 3D images and local tomographic images using the CEX- μ CT method. If only local evaluation using tissue staining is performed in drug discovery studies using KOA models, there is a possibility that actual medicinal effects are overlooked.

5. Conclusions

In summary, 30% Oypalomin as a contrast reagent was optimal for CEX- μ CT imaging in this study. In addition, the characteristics of cartilage degradation in MMx-induced KOA were detected using CEX- μ CT combined with classical methods. Finally, the synovium in MMx-induced KOA exhibited chronic inflammation, suggesting that it may contribute to cartilage degradation (the figure as graphical abstract). On the basis of the findings from the current study, we suggest that CEX- μ CT will prove helpful in selecting optimal models and in discovering and testing drugs in future KOA studies.

Supplementary Materials: Supplementary materials can be found at <http://www.mdpi.com/2227-9059/8/3/56/s1>.

Author Contributions: T.S., T.K., and K.A. conceived and designed the experiments; T.S., T.K., K.A., and A.T. performed the experiments; Y.T. (Yoshiya Tome), Y.T. (Yoshinori Takeuchi), Y.A., and N.Y. educated experimental methods to T.S., T.K., and K.A.; A.T. and M.V. operated the μ CT equipment; T.S., T.K., and K.A. drafted the manuscript; T.S., T.K., K.A., A.T., and K.Y. analyzed the data; all authors provided critical comments and contributed to the discussion of the results; T.S., T.K., K.A., and K.T. edited and revised the manuscript. All authors approved the final version of the manuscript.

Funding: This research received no external funding.

Acknowledgments: A part of this work was supported by NIMS microstructural characterization platform as a program of “Nanotechnology Platform” of the Ministry of Education, Culture, Sports, Science, and Technology (MEXT), Japan.

Conflicts of Interest: All the authors declare that there are no conflicts of interest. This research did not receive any specific grant from funding agencies in the public, commercial, or not-for-profit sectors.

Abbreviations

CEX- μ CT	contrast enhanced X-ray micro computed tomography
PBS	phosphate-balanced saline
P	posterior
A	anterior
MCT	medial cartilage of tibial plateau
LCT	lateral cartilage of tibial plateau

MMx	medial meniscectomy
KOA	knee osteoarthritis
qPCR	real-time quantitative polymerase chain reaction

References

- Lyn, M.; Marita, C. *Epidemiology and Risk Factors for Osteoarthritis*; David, H., Monica, R.C., Eds.; UpToDate. Inc.: Waltham, MA, USA, 2019; Available online: <https://www.uptodate.com/contents/epidemiology-and-risk-factors-for-osteoarthritis> (accessed on 29 August 2019).
- Kuyinu, E.L.; Narayanan, G.; Nair, L.S.; Laurencin, C.T. Animal models of osteoarthritis: Classification, update, and measurement of outcome. *J. Orthop. Surg. Res.* **2016**, *11*, 19. [CrossRef] [PubMed]
- The Japanese Orthopedic Association Knee Osteoarthritis. Available online: https://www.joa.or.jp/public/sick/condition/knee_osteoarthritis.html (accessed on 29 August 2019).
- Takayama, K.; Kawakami, Y.; Kobayashi, M.; Greco, N.; Cummins, J.H.; Matsushita, T.; Kuroda, R.; Kurosaka, M.; Fu, F.H.; Huard, J. Local intra-articular injection of rapamycin delays articular cartilage degeneration in a murine model of osteoarthritis. *Arthritis Res.* **2014**, *16*, 482. [CrossRef] [PubMed]
- Cai, H.; Qu, N.; Chen, X.; Zhou, Y.; Zheng, X.; Zhang, B.; Xia, C. The inhibition of PLC γ 1 protects chondrocytes against osteoarthritis, implicating its binding to Akt. *Oncotarget* **2017**, *9*, 4461–4474. [CrossRef] [PubMed]
- Tu, C.; Huang, X.; Xiao, Y.; Song, M.; Ma, Y.; Yan, J.; You, H.; Wu, H. Schisandrin A inhibits the IL-1 β -induced inflammation and cartilage degradation via suppression of MAPK and NF- κ B signal pathways in rat chondrocytes. *Front. Pharmacol.* **2019**, *10*, 41. [CrossRef] [PubMed]
- Ran, J.; Ma, C.; Xu, K.; Xu, L.; He, Y.; Moqbel, S.A.A.; Hu, P.; Jiang, L.; Chen, W.; Bao, J.; et al. Schisandrin B ameliorated chondrocytes inflammation and osteoarthritis via suppression of NF- κ B and MAPK signal pathways. *Drug Des. Devel. Ther.* **2018**, *12*, 1195–1204. [CrossRef]
- Desando, G.; Cavallo, C.; Sartoni, F.; Martini, L.; Parrilli, A.; Veronesi, F.; Fini, M.; Giardino, R.; Facchini, A.; Grigolo, B. Intra-articular delivery of adipose derived stromal cells attenuates osteoarthritis progression in an experimental rabbit model. *Arthritis Res.* **2013**, *15*, R22. [CrossRef]
- Wang, S.; Wei, X.; Zhou, J.; Zhang, J.; Li, K.; Chen, Q.; Terek, R.; Fleming, B.C.; Goldring, M.B.; Ehrlich, M.G.; et al. Identification of α 2-macroglobulin as a master inhibitor of cartilage-degrading factors that attenuates the progression of posttraumatic osteoarthritis. *Arthritis Rheumatol.* **2014**, *66*, 1843–1853. [CrossRef]
- Ozeki, N.; Muneta, T.; Koga, H.; Nakagawa, Y.; Mizuno, M.; Tsuji, K.; Mabuchi, Y.; Akazawa, C.; Kobayashi, E.; Matsumoto, K.; et al. Not single but periodic injections of synovial mesenchymal stem cells maintain viable cells in knees and inhibit osteoarthritis progression in rats. *Osteoarthr. Cartil.* **2016**, *24*, 1061–1070. [CrossRef]
- Xie, L.; Lin, A.S.; Levenston, M.E.; Guldberg, R.E. Quantitative assessment of articular cartilage morphology via EPIC-microCT. *Osteoarthr. Cartil.* **2009**, *17*, 13–20. [CrossRef]
- Willett, N.J.; Thote, T.; Hart, M.; Moran, S.; Guldberg, R.E.; Kamath, R.V. Quantitative pre-clinical screening of therapeutics for joint diseases using contrast enhanced micro-computed tomography. *Osteoarthr. Cartil.* **2016**, *24*, 1604–1612. [CrossRef]
- Yanagisawa, K.; Muneta, T.; Ozeki, N.; Nakagawa, Y.; Udo, M.; Saito, R.; Koga, H.; Tsuji, K.; Sekiya, I. Weekly injections of Hylan G-F 20 delay cartilage degeneration in partial meniscectomized rat knees. *BMC Musculoskelet. Disord.* **2016**, *17*, 188. [CrossRef] [PubMed]
- Schindelin, J.; Arganda-Carreras, I.; Frise, E.; Kaynig, V.; Longair, M.; Pietzsch, T.; Preibisch, S.; Rueden, C.; Saalfeld, S.; Schmid, B.; et al. Fiji: An open-source platform for biological-image analysis. *Nat. Methods* **2012**, *9*, 676–682. [CrossRef] [PubMed]
- Pritzker, K.P.; Gay, S.; Jimenez, S.A.; Ostergaard, K.; Pelletier, J.P.; Revell, P.A.; Salter, D.; Van den Berg, W.B. Osteoarthritis cartilage histopathology: Grading and staging. *Osteoarthritis Cartilage* **2006**, *14*, 13–29. [CrossRef] [PubMed]
- Manabe, I. Inflammaging and age-associated diseases. *Nippon. Ronen Igakkai Zasshi* **2017**, *54*, 105–113. [CrossRef]
- Pahwa, R.; Jialal, I. Chronic Inflammation. In *StatPearls [Internet]*; StatPearls Publishing: Treasure Island, FL, USA, 2019. Available online: <https://www.ncbi.nlm.nih.gov/books/NBK493173/> (accessed on 6 March 2020).
- Landskron, G.; De la Fuente, M.; Thuwajit, P.; Thuwajit, C.; Hermoso, M.A. Chronic inflammation and cytokines in the tumor microenvironment. *J. Immunol. Res.* **2014**, *2014*, 149185. [CrossRef]

19. Suarez-Carmona, M.; Lesage, J.; Cataldo, D.; Gilles, C. EMT and inflammation: Inseparable actors of cancer progression. *Mol. Oncol.* **2017**, *11*, 805–823. [[CrossRef](#)]
20. Rigoglou, S.; Papavassiliou, A.G. The NF- κ B signalling pathway in osteoarthritis. *Int. J. Biochem. Cell Biol.* **2013**, *45*, 2580–2584. [[CrossRef](#)]
21. Yuan, G.H.; Tanaka, M.; Masuko-Hongo, K.; Shibakawa, A.; Kato, T.; Nishioka, K.; Nakamura, H. Characterization of cells from pannus-like tissue over articular cartilage of advanced osteoarthritis. *PLoS ONE* **2013**, *8*, e79662. [[CrossRef](#)]
22. Yang, C.C.; Lin, C.Y.; Wang, H.S.; Lyu, S.R. Matrix metalloproteinases and tissue inhibitors of metalloproteinases in medial plica and pannus-like tissue contribute to knee osteoarthritis progression. *PLoS ONE* **2013**, *8*, e79662. [[CrossRef](#)]
23. Chen, J.J.; Huang, J.F.; Du, W.X.; Tong, P.J. Expression and significance of MMP3 in synovium of knee joint at different stage in osteoarthritis patients. *Asian Pac. J. Trop. Med.* **2014**, *4*, 297–300. [[CrossRef](#)]
24. Wojdasiewicz, P.; Poniatowski, L.A.; Szukiewicz, D. The role of inflammatory and anti-inflammatory cytokines in the pathogenesis of osteoarthritis. *Mediators Inflamm.* **2014**, *2014*, 561459. [[CrossRef](#)] [[PubMed](#)]
25. Jenei-Lanzl, Z.; Meurer, A.; Zaucke, F. Interleukin-1 β signaling in osteoarthritis—chondrocytes in focus. *Cell Signal.* **2019**, *53*, 212–223. [[CrossRef](#)] [[PubMed](#)]
26. Van der Kraan, P.M.; Van den Berg, W.B. Chondrocyte hypertrophy and osteoarthritis: Role in initiation and progression of cartilage degeneration? *Osteoarthr. Cartil.* **2012**, *20*, 223–232. [[CrossRef](#)] [[PubMed](#)]



© 2020 by the authors. Licensee MDPI, Basel, Switzerland. This article is an open access article distributed under the terms and conditions of the Creative Commons Attribution (CC BY) license (<http://creativecommons.org/licenses/by/4.0/>).