

[ PICTURES IN CLINICAL MEDICINE ]

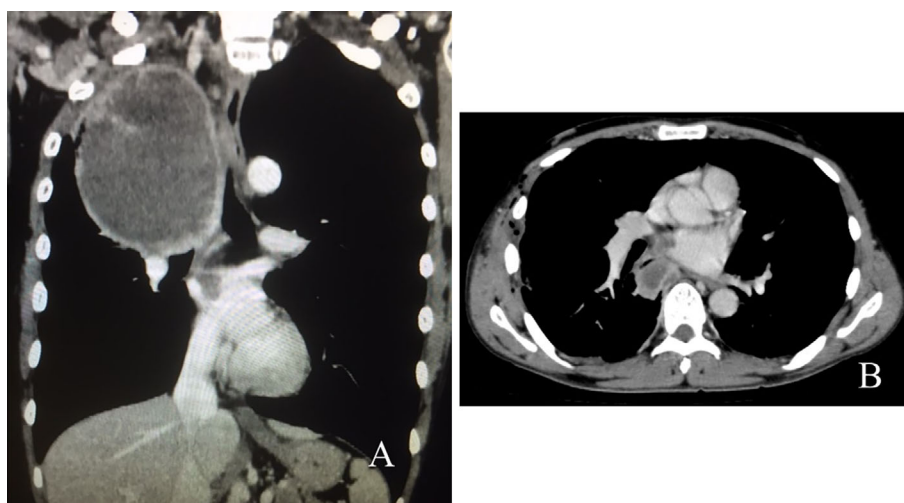
## Atrial Involvement in Pleomorphic Carcinoma of the Lung

Yuki Kaji and Hiroaki Satoh

**Key words:** atrial involvement, pleomorphic carcinoma, lung cancer

(Intern Med 56: 2687, 2017)

(DOI: 10.2169/internalmedicine.8883-17)



**Picture.**

A 46-year-old man was admitted to the hospital with anorexia, fever and weight loss. Thoracic computed tomography revealed a right upper lobe mass infiltrating the right atrium (Picture). Bronchoscopy and a biopsy confirmed pleomorphic carcinoma of the lung. The patient received chemoradiotherapy and succumbed to the disease eight months after the initiation of the therapy. Cardiac involvement in lung cancer is not rare and occurs as direct invasion or via the great vessels (1, 2). Right atrial involvement via the superior and inferior vena cava are caused by the tumor itself and tumor thrombus. The prognosis of the majority of such patients remains poor, although a limited number are indicative for surgical treatment. However, further improvement of the prognosis through multidisciplinary treatment, as observed in this patient, is desired.

The authors state that they have no Conflict of Interest (COI).

### References

1. Abraham KP, Reddy V, Gattuso P. Neoplasms metastatic to the heart: review of 3314 consecutive autopsies. *Am J Cardiovasc Pathol* 3: 195-198, 1990.
2. Casey RG, Raheem OA, Elmusharaf E, Madhavan P, Tolan M, Lynch TH. Renal cell carcinoma with IVC and atrial thrombus: a single centre's 10 year surgical experience. *Surgeon* 11: 295-299, 2013.

The Internal Medicine is an Open Access article distributed under the Creative Commons Attribution-NonCommercial-NoDerivatives 4.0 International License. To view the details of this license, please visit (<https://creativecommons.org/licenses/by-nc-nd/4.0/>).

Division of Respiratory Medicine, Mito Medical Center, University of Tsukuba, Japan

Received: January 17, 2017; Accepted: February 17, 2017; Advance Publication by J-STAGE: September 6, 2017

Correspondence to Dr. Hiroaki Satoh, [hirosato@md.tsukuba.ac.jp](mailto:hirosato@md.tsukuba.ac.jp)

© 2017 The Japanese Society of Internal Medicine. *Intern Med* 56: 2687, 2017