

## **Socioeconomic Evaluation of Transit Oriented Development using a Detailed Spatial Scale CUE Model in Taiwan**

Hiromichi YAMAMOTO <sup>a\*</sup>, Jumpei SANO <sup>b</sup>, Kiyoshi YAMASAKI <sup>c</sup>, Kazuki YANAGISAWA <sup>d</sup>, Atsushi KOIKE <sup>e</sup>, Morito TSUTSUMI <sup>f</sup>

<sup>a, b</sup> *Mitsubishi Heavy Industries, Ltd., Kobe, 652-8585, Japan*

<sup>a</sup> *E-mail: hiromichi\_yamamoto@mhi.co.jp*

<sup>b</sup> *E-mail: jumpei\_sano@mhi.co.jp*

<sup>c, d</sup> *Value Management Institute, Ltd., Tokyo, 100-0004, Japan*

<sup>c</sup> *E-mail: kiyoshi\_yamasaki@vmi.co.jp*

<sup>d</sup> *E-mail: yanagisawa2210@vmi.co.jp*

<sup>e</sup> *Kobe University, Kobe, 657-8501, Japan; E-mail: koike@lion.kobe-u.ac.jp*

<sup>f</sup> *University of Tsukuba, Tsukuba, 305-8573, Japan;*

*E-mail: tsutsumi@sk.tsukuba.ac.jp*

**Abstract:** In Asian and ASEAN countries, there are many urban development plans based on the concept of Transit Oriented Development (TOD). The Computable Urban Economic (CUE) model, which enables simultaneous evaluation of urban and transportation development, is one of the major approaches for estimating the effects of a development plan based on TOD. However, these effects have been difficult to evaluate, especially in Asian and ASEAN countries apart from Japan, owing to the lack of public data on geographic land use by small zone units. We have estimated a detailed spatial scale land use dataset by using satellite images. This enables land use classification on an appropriate scale for the evaluation of TOD. This paper describes the evaluation results of the development plan of Taoyuan City, Taiwan that was carried out by building a detailed spatial scale CUE model based on data and our estimation approach.

**Keywords:** Computable Urban Economic Model, Transit Oriented Development, Public Transportation, Taoyuan Aerotropolis, Automated Railway, Asia and ASEAN

## **1. INTRODUCTION**

Owing to the recent remarkable economic growth in Asian and ASEAN countries, metropolises in each country have many urban development plans for land use and transportation. At the same time, heavy traffic congestion and increases in CO<sub>2</sub> emissions from the transportation sector are serious urban problems caused by urban development plans centered on cars and motorcycles. To minimize these critical problems while maintaining their urban development, these countries currently pay attention to the concept of Transit Oriented Development (TOD), which aims to simultaneously achieve economic growth and reduce CO<sub>2</sub> emissions.

Urban development based on TOD is used to build a public transportation oriented city or community by centralizing the stations. TOD has been widely adopted by private railway companies in Japan, such as Hankyu Corporation and Tokyu Corporation. To estimate the effects of a development plan based on TOD, it is necessary to simultaneously simulate the

---

\* Corresponding author.

impact of land use development and that of transportation development. The Computable Urban Economic (CUE) model has been widely used in Japan to assess the effects of these development plans. Its characteristics are different from those of the traditional Land Use and Transportation Integration Model. The CUE model is characterized by a microeconomic foundation and by a spatial equilibrium based on urban economics. Each economic agent demands or supplies land, building, transportation service, and other goods at a location of their choice (Ueda *et al.*, 2013; Yamasaki *et al.*, 2008, 2013).

However, when we apply the CUE model to urban development plans in Asian and ASEAN countries apart from Japan, one of the main difficulties is to obtain the data on geographic land use at a detailed spatial scale from open resources. Therefore, the land use models in these countries cannot avoid being constructed with large spatial zone units, such as prefecture and city units, which implies that it is not possible to precisely analyze travel behavior at a smaller scale (Tsutsumi *et al.*, 2012). To address this issue, we have estimated a detail spatial scale land use dataset by using satellite images such as those serviced by Google Earth. This enables estimation of the effects of urban development plans in Asian and ASEAN countries by detailed spatial scale CUE models.

In this study, we build a detailed spatial scale CUE model with our estimation approach, using data of Taoyuan City, Taiwan. We present the results and their evaluation.

This paper is organized as follows. Section 2 reviews the status and overview of the land use and transportation development plan in Taoyuan City. Section 3 describes the dataset for building the detailed spatial scale CUE Model with a new classification approach. Section 4 describes the formulation of the CUE Model, and Section 5 describes the simulation parameters. Section 6 describes the simulation results using the detailed spatial scale CUE Model in Taoyuan. The main conclusions and outlook for further applications are summarized in Section 7.

## 2. DEVELOPMENT PLAN OF TAOYUAN CITY, TAIWAN

### 2.1 Taoyuan City

Taoyuan City is located approximately 50 km west of Taipei City and was promoted to a government-ruled municipality on 25 December, 2014. Taoyuan City has been flourishing as a gateway to Taiwan through Taiwan Taoyuan International Airport, the largest international airport in Taiwan. It also has an industrial area and is expected to grow as one of the major cities in Taiwan. The population of Taoyuan City is approximately two million, and this city is currently recognized as a bedroom town of Taipei City.

### 2.2 Transit Oriented Development: TOD

Taoyuan City has a development plan for public railway transportation based on the Taoyuan Aerotropolis, one of Taiwan's national projects. The Taoyuan city government announced that they would develop their city using TOD. This implies that it will be necessary for the city to integrate its land use development and transportation development plans. Under the urban development plan using TOD, residents

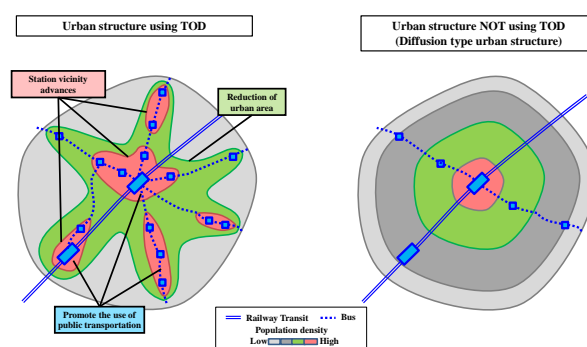


Figure 1. Conceptual figure of TOD

and visitors are assumed to use public transportation in their movement and not necessarily to rely on private transportation such as cars and motorcycles. The metropolitan and suburban areas are connected by railway transportation, and urban activities are accumulated around the railway stations (Taniguchi, 2009).

Since TOD theoretically has the potential to control the acceleration of motorization, it has been paid attention as an approach for reduction of CO<sub>2</sub> emissions from the transportation sector. This is one of the valuable approaches for economically developing countries, such as Asian and ASEAN countries, when they plan their urban development. The key challenges of TOD are to simultaneously evaluate the effects of the land use development and transportation development plans and to manage and optimize the dual development plan.

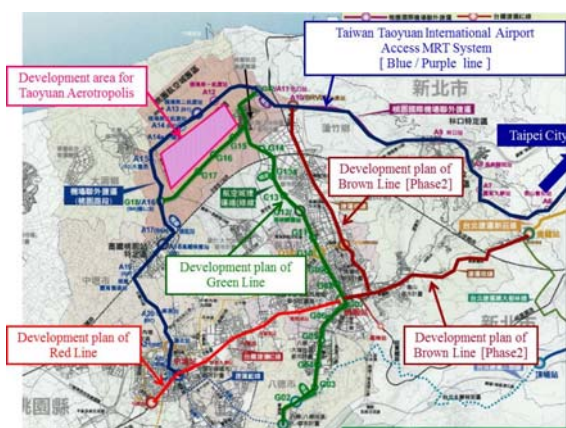
### 2.3 Taoyuan Aerotropolis

Taoyuan Aerotropolis is a Taiwanese national project under which Taoyuan City has been developing as an international gateway, taking advantage of its geographical location in Asia Pacific, the infrastructure of the seaport and the airport (Taoyuan Airport and Taipei Port), and the Free Trade Port Zone. The main objectives of the project are 1) to develop Taoyuan Airport as a hub airport in East Asia, 2) to promote urban development using TOD, 3) to promote and develop the clustering industries, 4) to realize a sustainable and smart Aerotropolis, and 5) to boost the development of the dual ports.

Taoyuan Aerotropolis is a newly developed area around Taoyuan Airport of 4,177 ha (including the Taoyuan Airport site) and is divided into five zones. The development plans of the zones depend on the characteristics and transportation conditions of each zone and will be completed by 2041. The development of Taoyuan Aerotropolis will activate the industrial sectors and realize globalization. According to an economic analysis by the Taoyuan municipality, this project will have an economic effect of 2,300 billion New Taiwan dollars and result in employment opportunities for 300,000 people.

### 2.4 Public Railway System

In Taoyuan City, various transportation development projects are being promoted together with Taoyuan Aerotropolis and other urban plans (please refer to Table 1 and Figure 3 for examples). Taiwan's Taoyuan International Airport Access MRT connects Taipei City to Taoyuan Airport via a one-way, 35 min trip. In addition, the Green Line connects the downtown area of Taoyuan City to Taoyuan Airport. TOD-based urban development is planned for Taoyuan Aerotropolis, whereby activities will be centralized around the main station of Taiwan Taoyuan International Airport Access MRT and the Green Line. This concept will expand to other railway transportation within the city, such as the Brown Line, in the future.



Source: Transportation Bureau of Taoyuan Government  
101.11 version

Figure 2. Development project map of the public railway system in Taoyuan

Table 1. Development plan of public railway system in Taoyuan

Railway	Length	Station Number	Beginning Year of Operation	Current Status
Taiwan Taoyuan International Airport Access MRT	53.7 km	24	End of 2015	Under Construction
Red Line	17.2 km	7	2017	Under Construction
Green Line	27.8 km	22	2021	Under Planning
Brown Line Phase 1	11.5 km	8	2023	Under Planning
Brown Line Phase 2	12.0 km	8	2023 or later	Under Planning

### 3. DATASET FOR THE COMPUTABLE URBAN ECONOMIC MODEL

#### 3.1 Zoning

Urban development in Taoyuan City, including transportation and land use development, will have various effects on the surrounding cities. The principal range of travel behavior from Taoyuan City includes commuting trips and private trips to Taipei City and New Taipei City. Therefore, the target area in this simulation study includes the northern area of Taiwan, which consists of Taoyuan City, Taipei City, New Taipei City, and Keelung City. However, we do not consider the interaction between the northern area of Taiwan and other regions, because the travel behavior of Taoyuan City consists of residential trips and employee trips within the coverage area. However, trips from the airport will have a significant impact on travel behavior involving urban transportation. Therefore, we have considered visitor trips from other regions to the airport in this study.

It is necessary to set up a zone in which at the most one station or terminal for railway transportation exists to evaluate the effects of TOD using the CUE model. In this paper, the word “terminal” represents a transportation node, which consists of a few stations of different lines. We have set only one station or one terminal in each zone, because we need to clarify the travel behavior in each railway station in order to evaluate the TOD. If there are multiple stations or terminals within a zone, travel behavior cannot be divided by station or terminal within the zone. We divide the area that includes the Green Line into tiny zones in order to evaluate the effects of TOD around it. The total number of zones is 301. The steps for determining the zones are as follows:



a) Whole of the northern area of Taiwan      b) Seven administrative districts

Figure 3. Coverage Area (301 zones)

- 1) The entire northern area of Taiwan is divided into 55 zones at the prefecture or city level.
- 2) Seven administrative districts where transportation development has been planned are

divided into smaller zones. To divide these districts, we applied public information of polygon data from Taoyuan City. This polygon data is prepared in the detailed spatial scale. The seven administrative districts are Taoyuan city Dayuan district, Zhongli district, Taoyuan district, Bade district, Luzhu district, Guishan district, and New Taipei city Xinzhuang district.

- 3) In case a zone has more than one station for railway transportation, the zone is spatially equally divided into two or more zones, each of which has only a station or a terminal.

### 3.2 Land Use Data

#### 3.2.1 Dataset method for land use data

In Japan, land use data at a detailed spatial scale, such as at the district level or smaller, have been prepared and published. In other Asian and ASEAN countries, land use data has not been prepared, even on a large administrative district scale, such as at the prefecture or city unit level. In the northern area of Taiwan, land use data is published by each administrative district. However, the data are at the prefecture or city unit level. In this study, we have estimated a detailed spatial scale land use dataset by using satellite images. This enables land use classification at a detailed spatial scale. Table 2 lists the setting sources and methods for each zone.

Table 2. Dataset sources and methods for land use data

List of “land use data”	Sources and methods for 301 zones	
	Large Zone “Prefecture & City level”	Small Zone “Seven administrative districts”
1 Population of each zone	Public information	Public information
2 Employees		Our estimation approach
3 Land-value (Residential/Business)		
4 Building lot area (Residential/Business)		
5 Land area available to supply (Residential/Business)		
6 GRP		

#### 3.2.2 Application of our approach for estimating the land use area by satellite image

The new approach of estimating land use area by satellite image is as follows.

- 1) The small zones in seven administrative districts are divided into a  $250 \times 250$  m grid cell. Thus, 10,374 grid cells are made. Dividing the area into polygons is another option. In the case of the polygon method, it is necessary to make polygon shapes manually after classifying the area into land use categories using satellite images. However, there is a possibility of making an unstable decision based on the classification, because the polygon shapes of the area are made manually and the criteria of the decision are not clear. Therefore, we do not use the polygon method. The reason we adopt a grid cell size of  $250 \times 250$  m is that the grid cell is smaller than the smallest zone and that it is sufficient to maintain the decision-making accuracy of the land use classification.
- 2) We classify all of grid cells into four land use categories using satellite images obtained from Google Earth. Table 3 shows the land use categories, and Figure 4 shows a decision flowchart for the land use classification. As a practical method, first, we will aggregate the

land use area into a grid cell that has been identified by color and building shape in a satellite image. Second, we will decide which land use category to apply to the urban area, and the amount of green space depends on the occupation rate. If the occupation ratio of the building area in the grid cell is more than 50%, this grid cell is considered to be in the urban space category. If the occupation ratio of the building area in the grid cell is less than 50%, this area fits into the green space category. Third, we will determine the land use category for the transportation area. If the occupation ratio of the transportation area is more than 50%, the area shall be placed in the urban space category. Finally, we will determine the land use category for non-resident and residential spaces. If the occupation ratio of the large-scale building area in the grid cell is more than 50%, the grid cell is classified as a non-residence. If the occupation ratio of the residential building area in the grid cell is more than 50%, the grid cell is classified as a residence. On the other hand, if the occupation ratio for the entire land use area is not more than 50%, we will select the land use classification with the highest occupancy ratio.

- 3) Figure 5 shows the results of the land use classification in all of the small zones. Using these results, we can calculate the land use area for the four categories in each small zone.
- 4) Eventually, we estimated the land use data for each small zone, as shown in Table 2, by using large-scale land use data from public sources, and the aggregated land use area for each land use category shown in the below flowchart. Table 4 lists the concrete estimate method for land use data for each small zone. In addition, we do not consider the difference between land use areas by type of building in this study. Therefore, this method cannot correctly estimate the amount of floor space. This point is an issue for future study, which will require us to study an additional approach.

Table 3. Categories of land use

Categories of Land Use		Item
Green Space, Unused Land		Green Space, Unused Land, River, Pond, etc.
Urban Area	Land for Residence	Residential House, Apartment Building
	Land for Non-residence	Factory, Office Building, Commercial Building
	Land for Transportation Infrastructure	Railway, Roadway, Airport, Port, Large-Scale Ground, etc.

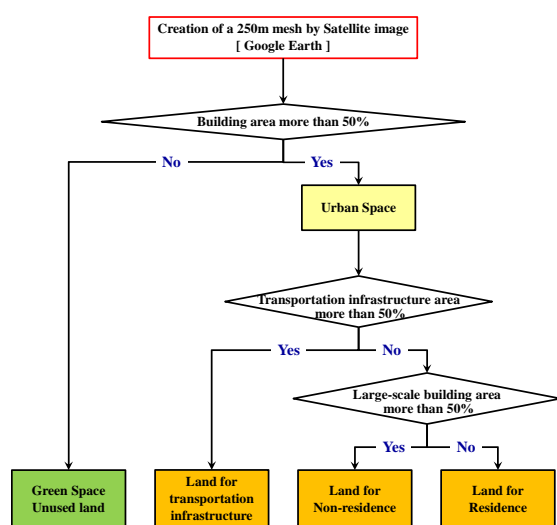


Figure 4. Decision flowchart of land use classification

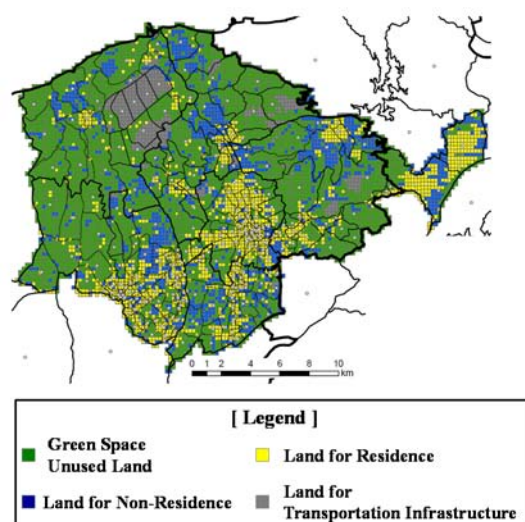


Figure 5. Result of land use classification in small zones of seven administrative districts



Table 4. Estimation method for each land use dataset

Land Use Datasets	Estimation method for small zones of each land use dataset
Employee	<p>The number of employees in a small zone is estimated by the following formula. The building lot area for residences and businesses in each small zone is calculated in 3.2.2-2).</p> $E_i^S = E_k^L \times \frac{(AR_i^S + AB_i^S)}{(AR_k^L + AB_k^L)} \quad (1)$ <p><math>i</math>: Small zone number (the large zone “<math>k</math>” is divided into <math>i</math>-number of small zones)  <math>E_i^S</math>: The number of employees in each small zone  <math>E_k^L</math>: The number of employees in a large zone  <math>AR_k^L</math>: Building lot area for a residence in a large zone <math>k</math>  <math>AB_k^L</math>: Building lot area for a business in a large zone <math>k</math>  <math>AR_i^S</math>: Building lot area for a residence in each small zone  <math>AB_i^S</math>: Building lot area for a business in each small zone</p>
Land value (Residence/Business)	<p>The estimation of land value is divided into two steps. Firstly, we calculate the following two regression formulas by using data from a large zone.</p> <p>1) The regression formula for population density and land value for a residence:</p> $rH_k^L = \alpha \times ND_k^L + C \quad (2)$ <p><math>rH_k^L</math>: residential land value for of large zone <math>k</math>,  <math>ND_k^L</math>: population density of large zone <math>k</math>, <math>\alpha</math>: coefficient, <math>C</math>: intercept coefficient</p> <p>2) The regression formula for employee density and land value for a business:</p> $rB_k^L = \beta \times ED_k^L + C \quad (3)$ <p><math>rB_k^L</math>: business land value for of large zone <math>k</math>,  <math>ED_k^L</math>: employee density of large zone <math>k</math>, <math>\beta</math>: coefficient, <math>C</math>: intercept coefficient</p> <p>Secondly, we estimate the land value for each small zone by substituting the population density and employee density in each small zone in the above regression formula.</p>
Building lot area (Residence/Business)	<p>The building lot area of a small zone is estimated by the building lot area ratio of large zone “<math>k</math>” and small zone “<math>i</math>”.</p> <p>1) The building lot area for a residence:</p> $AR_i^S = AR_k^L \times \frac{ARA_i^S}{\sum_i ARA_i^S} \quad (4)$ <p><math>i</math>: Small zone number (The large zone “<math>k</math>” is divided into <math>i</math> small zones.)  <math>AR_i^S</math>: The building lot area for a residence in each small zone <math>i</math>  <math>AR_k^L</math>: The building lot area for a residence in a large zone <math>k</math>  <math>ARA_i^S</math>: The aggregate value of an estimated building lot area for a residence determined by satellite image</p> <p>2) The building lot area for a business:</p> $AB_i^S = AB_k^L \times \frac{ABA_i^S}{\sum_i ABA_i^S} \quad (5)$ <p><math>AB_i^S</math>: The building lot area for a business in each small zone <math>i</math>  <math>AB_k^L</math>: The building lot area for a business in a large zone <math>k</math>  <math>ABA_i^S</math>: The aggregate value of estimated building lot area for a business by satellite image</p>
Land area available to supply (Residence/Business)	<p>The data of land area available to supply each small zone estimated by the land area available to supply from large zone data and area of zone.</p> <p>1) The land area available to supply for a residence</p> $Y_i^{HO} = Y_k^{HO} \times \frac{A_i}{A_k} \quad (6)$ <p><math>i</math>: Small zone number (the large zone “<math>k</math>” is divided into <math>i</math> small zones.)  <math>Y_i^{HO}</math>: The land area available to supply for a residence of each small zone <math>i</math>  <math>Y_k^{HO}</math>: The land area available to supply for a residence of large zone <math>k</math>  <math>A_i</math>: The zone area of small zone <math>i</math>, <math>A_k</math>: The zone area of large zone <math>k</math></p>

2) The land area available to supply for a business

$$Y_i^{BO} = Y_k^{BO} \times \frac{A_i}{A_k} \quad (7)$$

$Y_i^{BO}$  : The land area available to supply for a business in each small zone  $i$

$Y_k^{BO}$  : The land area available to supply for a business in a large zone  $k$

$A_i$  : The zone area of small zone  $i$ ,  $A_k$  : The zone area of large zone  $k$

GRP GRP of small zone estimate by GRP of large zone and the number of employees of each small zone.

$$GRP_i^S = GRP_k^L \times \frac{E_i^S}{\sum_i E_i^S} \quad (8)$$

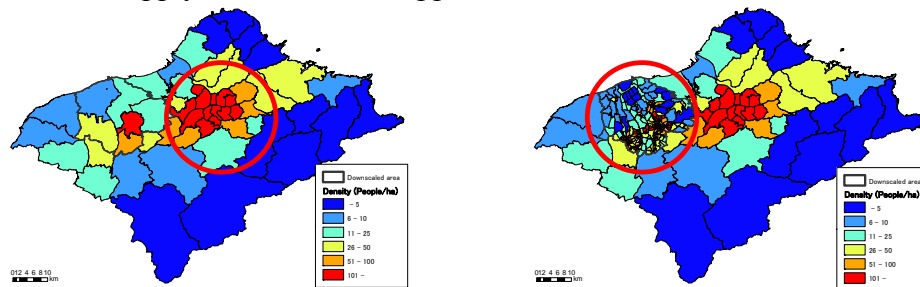
$i$  : small zone number (the large zone “ $k$ ” is divided into  $i$  small zones)

$GRP_i^S$  : GRP of small zone  $i$ ,  $GRP_k^L$  : GRP of large zone  $k$

$E_i^S$  : The number of employee of each small zone

### 3.2.3 Land use datasets

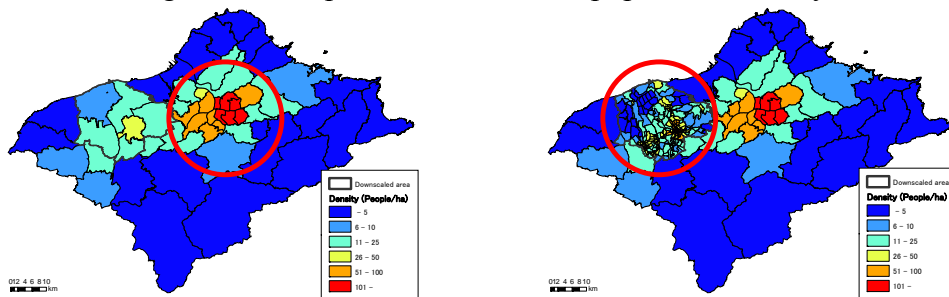
Figures 6 and 7 show examples of the datasets for population density and employee density. The population density data for the small zones are obtained from the Taoyuan government website and are shown in Figure 6 in comparison with the employee density. While open sources provide land use data, such as employee density by large zone units (the original scale), the estimation approach of the land use area using satellite images can show land use data in small zone units (downscaled). Regarding the accuracy of our estimation approach, we could not validate it in this study because actual land use data for each small zone was not available from the Taoyuan government. However, we have reached an understanding with the Taoyuan government whereby we will discuss the feasibility of our estimated results. Through this approach, we believe that our new estimation approach can attain sufficient accuracy. This estimation approach has the possibility of being applied to evaluate urban development using TOD in Asian and ASEAN countries, where land use data is not sufficient. In the next step, we are planning to develop an automatic decision algorithm for land use classification and to apply this estimation approach to other cities in Asia.



a) Original scale

b) Downscaled [from open source]

Figure 6 Example of land use data: population density



a) Original scale

b) Downscaled [by our estimation approach]

Figure 7 Example of land use data: Employee density



### 3.3 Transportation Data

#### 3.3.1 Transportation network data

In this study, we build the railway network and roadway network in 2009 as existing networks and those in 2021 as future networks. Table 5 shows a list of the transportation network model, and Figure 8 shows a dataset of the transportation network for 2021.

Table 5. List of transportation network model

Segment		Network Model	2009	2021
Railway transit	Existing	METRO [Taipei Subway]	✓	✓
		TRA Local Line: Taoyuan to Taipei]	✓	✓
		Taiwan High Speed Rail	✓	✓
	Future	Purple/Blue Line		✓
		Red Line		✓
		Green Line		✓
Roadway	Existing Road		✓	✓
	Future Road			✓

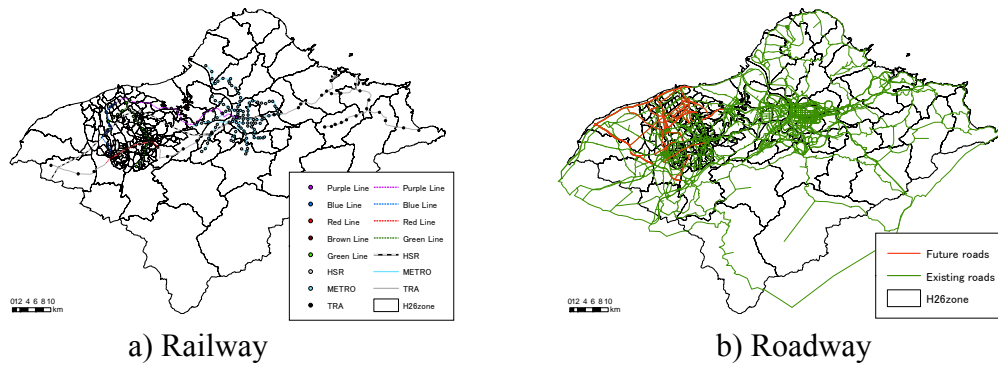


Figure 8. Dataset of transportation network [year 2021]

#### 3.3.2 Target of transport mode

Table 6 shows a list of the transportation modes. Passenger trips consist of regular trips and visitor trips from the airport. We set four transportation modes for this category. On the other hand, we set only one mode, the truck mode, for freight trips. The passenger Origin–Destination (OD) of a usual day is an endogenous variable, and the passenger OD of an unusual day is an exogenous variable. The freight OD is also an exogenous variable.

Table 6. List of objectives for each trip and transportation modes

	Objectives for each trip		Transportation modes
Passenger	Usual trips	Commuting trip, Personal trip, Business trip	Railway, Bus, Car, Motorcycle
	Visitor trips from airport	Travel, Business trip	Railway, Bus, Car, Motorcycle
Freight transport			Truck

#### 3.3.3 OD Data

Table 7 shows the sources for the OD data. The OD data for railways, cars, and motorcycles are cited from data published by the Taiwan government. In addition, the OD data for freight are also quoted from the published information. On the other hand, since the OD data for

buses are not published for public access, it was estimated based on the trip volume for each objective in the northern area of Taiwan. The detailed estimation method for OD data for buses is shown in Table 8.

Table 7. Sources of OD data

Transportation modes	Source of OD data
Railway, Car, Motorcycle	“Traffic Census for Metropolis / Preference” Quotation from previous paper by Chen <i>et al.</i> (2013)
Bus	Estimation using the above OD data
Freight transport	“Survey report on motor vehicle freight traffic Taiwan area R.O.C” Quotation of previous paper by Chen <i>et al.</i> (2013)

Table 8. Estimation method for OD data for buses

STEP 1 Generated trip for bus in Taipei	<p>The generated trip for each purpose estimates the share ratio of each transportation mode and the number of trips for each purpose by using public information from the government.</p> $T_b^{WS} = P_b^W \cdot T^W + P_b^S \cdot T^S, T_b^H = P_b^H \cdot T^H, T_b^B = P_b^B \cdot T^B \quad (9)$ <p><math>m</math>: purpose of travel <math>m \in (WS: commuting, H: private, B: business)</math>  <math>T^m</math>: generated trip in Taipei for each purpose,  <math>P_b^m</math>: share ratio of buses in Taipei for each purpose  <math>T_b^m</math>: generated trip for buses in Taipei for each purpose</p>
STEP 2 Generated trip per person for bus in Taipei	<p>The generated trip per person for each purpose is estimated using the following formula:</p> $GB^{WS} = \frac{T_b^{WS}}{\sum_i N_i}, GB^H = \frac{T_b^H}{\sum_i N_i}, GB^B = \frac{T_b^B}{\sum_i N_i} \quad (10)$ <p><math>m</math>: purpose of travel <math>m \in (WS: commuting, H: private, B: business)</math>  <math>T_b^m</math>: generated trip for bus in Taipei for each purpose  <math>N_i</math>: population of zone <math>i</math>, <math>E_i</math>: employee of zone <math>i</math>  <math>GB^m</math>: generated trip per person for bus in Taipei of each purpose</p>
STEP 3 Generated trip for bus of each zone	<p>The generated trip for each zone is estimated by the following formula:</p> $GB_i^{WS} = GB^{WS} \cdot N_i, GB_i^H = GB^H \cdot N_i, GB_i^B = GB^B \cdot N_i \quad (11)$ <p><math>m</math>: purpose of travel <math>m \in (WS: commuting, H: private, B: business)</math>,  <math>i</math>: zone of origin, <math>N_i</math>: population of zone <math>i</math>, <math>E_i</math>: employee of zone <math>i</math>  <math>GB^m</math>: generated trip per person for bus in Taipei for each purpose  <math>GB_i^m</math>: generated trip for bus in each zone <math>i</math> in Taipei</p>
STEP 4 Estimation of OD data for bus	<p>OD data for bus is estimated by destination choice of logit model. The estimation method is described by the following formula:</p> $QB_{ij}^m = GB_i^m \cdot P_{ij}^m = GB_i^m \cdot \frac{\exp(V_{ij}^m)}{\sum_j \exp(V_{ij}^m)} \quad (12)$ $\begin{aligned} V_{ij}^m &= \theta_1^m \cdot \ln S_j^m + \lambda^m \cdot ACC_{ij}^m, & ACC_{ij}^m &= \ln \sum_k \exp(V_{ijk}^m) \\ V_{ijc}^m &= \theta_2^m t_{ij}^c + \beta_2^m n_{ij} + \beta_3^m u + a_c^m, & V_{ijr}^m &= \theta_2^m t_{ij}^r + \beta_2^m n_{ij} + a_r^m \\ V_{ijb}^m &= \theta_2^m t_{ij}^b + \beta_2^m n_{ij} + a_b^m, & V_{ijs}^m &= \theta_2^m t_{ij}^s + \beta_1^m d_{ij} + \beta_2^m n_{ij} \end{aligned} \quad (13)$ <p><math>m</math>: purpose of travel <math>m \in (WS: commuting, H: private, B: business)</math>,  <math>i</math>: zone of origin, <math>k</math>: transportation mode <math>k \in (c: private car, r: railway, b: bus, s: motorcycle)</math>  <math>GB_i^m</math>: generated trip for bus of each zone <math>i</math> in Taipei ratio  <math>\beta_3^m</math>: parameter of car preference dummy <math>\beta_3^m \in (1, 0)</math>  <math>a_k^m</math>: constant term of each transportation mode  <math>QB_{ij}^m</math>: OD trip for bus in Taipei of each purpose  <math>V_{ij}^m</math>: indirect utility among <math>ij</math> of each purpose  <math>V_{ijk}^m</math>: indirect utility for transportation mode: <math>k</math> among <math>ij</math> of each purpose  <math>t_{ij}^k</math>: general cost among <math>ij</math> of each transportation mode: <math>k</math>  <math>d_{ij}</math>: dummy parameter of distance among <math>ij</math> (less than 8 km: 1, more than 8 km: 0)  <math>n_{ij}</math>: ratio of accident, <math>u</math>: dummy parameter of car preference (car: 1, other: 0)  <math>\beta_1^m</math>: parameter of distance dummy <math>\beta_1^m \in (1, 0)</math>, <math>\beta_2^m</math>: parameter of accident</p>

## 4. COMPUTABLE URBAN ECONOMIC MODEL: CUE MODEL

### 4.1 Structure of CUE Model

The CUE model, a land use transportation interaction model based on microeconomic theory, is a static equilibrium model proposed by Ueda (1991), Ueda (1992), Muto *et al.* (2000), and Ueda *et al.* (2013). Its basic framework is applied generally in Japan. The model in this study, which is especially suitable for the analysis of a metropolitan region, is derived from the framework of the above model proposed in Yamasaki *et al.* (2008).

The structure of the CUE model is indicated in Figure 9. In the model, there are three agents, namely households, firms, and absentee landowners. All the agents attempt to maximize their utility or revenue by changing their location. The consumption and investment in the trip and land will keep changing until the land market and transportation market in each zone reach a state of equilibrium. Values such as rent and generalized transportation costs also reach a state of equilibrium, which implies that locators cannot enjoy a higher level of utility or revenue in zones other than the present one.

The premise conditions are as follows:

- 1) The three agents are households, firms, and absentee landowners where each household is presumed to be a person with the same preference and each firm is presumed to be an employee without industry classification.
- 2) The metropolis is divided into several zones and each zone has homogeneous geographical and economic features.
- 3) The metropolis is a closed region, which indicates there is no interaction between the subject metropolis and any outside region. In addition, the population and the employee are regarded as exogenous variables.
- 4) The overall model reaches a state of equilibrium when the land market and the transportation market reach equilibrium. The equilibrium state in the land market and transportation market are based on the equal utility and equal travel time principles, respectively.
- 5) Households and firms allocate themselves by maximizing their utilities and profits. However, any additional costs owing to relocation behavior are not considered.

### 4.2 Formulation of Each Agent's Behavior

The land use model is an equilibrium model of the land market, which corresponds perfectly to the land demand and the land supply, and the calculation of equilibrium is performed by the land value. The subjects of behaviors are households, firms, and landowners, and the land market is in the residential and business area. Table 9 shows the behavior models of households and firms, Table 10 shows the behavior model of landowners, and Table 11 shows the equilibrium conditions.

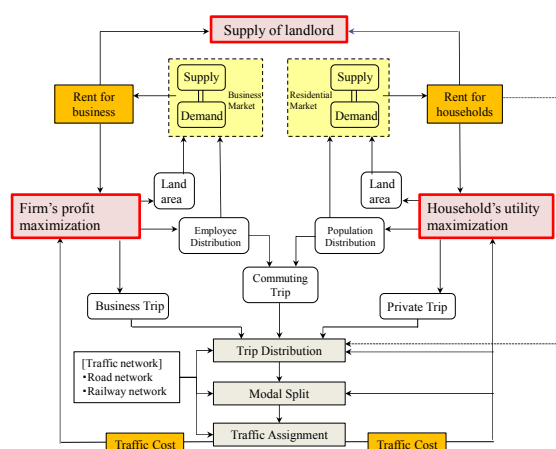


Figure 9. Whole structure of CUE

Table 9. Behavior models for households and firms

1) Goods consumption / Goods production behavior model	
Households' Behavior	<p>The households earn income by providing labor and consume the composite good and land service so as to maximize their utility budget and time constraints.</p> $V_i = \max_{z_i^H, a_i^H, x_i^H} [\alpha_z \ln z_i^H + \alpha_a \ln a_i^H + \alpha_x \ln x_i^H] \quad (14)$ $\text{s. t. } z_i^H + r_i^H a_i^H + q_i^H z_i^H = wT - q_i^w x_i^w = I_i \quad (15)$ $z_i^H = \alpha_z I_i, a_i^H = \frac{\alpha_a}{r_i^H} I_i, x_i^H = \frac{\alpha_x}{q_i^H} I_i \quad (16)$ $V_i = \ln(I_i) - \alpha_z \ln(r_i^H) - \alpha_x \ln(q_i^H) + C \quad (17)$ $C = \alpha_z \ln(\alpha_z) + \alpha_a \ln(\alpha_a) + \alpha_x \ln(\alpha_x) \quad (18)$ <p><math>i</math>: zone, <math>V_i</math>: indirect utility function, <math>z_i^H</math>: consumption of composite goods, <math>a_i^H</math>: consumption of land service (residential area), <math>x_i^H</math>: consumption of private trip for household, <math>x_i^w</math>: consumption of commuting trip, <math>\alpha_z, \alpha_a, \alpha_x</math>: distribution parameter, <math>r_i^H</math>: land rent for residential, <math>q_i^w</math>: cost of commuting trip, <math>q_i^H</math>: cost of private trip, <math>w</math>: wage rate, <math>T</math>: total available time, <math>I_i</math>: income</p>
Firms' behavior	<p>The firms produce composite goods by inputting land services, business trips so as to maximize their profit under the production technology constraint.</p> $\prod_i = \max_{a_i^B, x_i^B} [z_i^B - r_i^B a_i^B - q_i^B x_i^B] \quad (19)$ $\text{s. t. } z_i^B = \eta_i (a_i^B)^{\beta_a} (x_i^B)^{\beta_b} \quad (20)$ $a_i^B = \left\{ \frac{1}{\eta_i} \left( \frac{r_i^B}{\beta_a} \right)^{1-\beta_b} \left( \frac{\beta_b}{q_i^B} \right)^{-\beta_b} \right\}^{\frac{1}{\beta_a + \beta_b - 1}} \quad (21)$ $x_i^B = \left\{ \frac{1}{\eta_i} \left( \frac{q_i^B}{\beta_b} \right)^{1-\beta_a} \left( \frac{\beta_a}{r_i^B} \right)^{-\beta_a} \right\}^{\frac{1}{\beta_a + \beta_b - 1}} \quad (22)$ $z_i^B = (\eta_i)^{\frac{1}{1-\beta_a-\beta_b}} \left\{ \left( \frac{r_i^B}{\beta_a} \right)^{\beta_a} \left( \frac{q_i^B}{\beta_b} \right)^{\beta_b} \right\}^{\frac{1}{\beta_a + \beta_b - 1}} \quad (23)$ $\prod_i = (1 - \beta_a - \beta_b) \left\{ \frac{1}{\eta_i} \left( \frac{r_i^B}{\beta_a} \right)^{\beta_a} \left( \frac{q_i^B}{\beta_b} \right)^{\beta_b} \right\}^{\frac{1}{\beta_a + \beta_b - 1}} \quad (24)$ <p><math>i</math>: zone, <math>\pi_i</math>: production function, <math>z_i^B</math>: amount of production for composite goods, <math>r_i^B</math>: land rent for business, <math>q_i^B</math>: cost of business trip, <math>a_i^B</math>: consumption of land service (business area), <math>x_i^B</math>: consumption of business trip, <math>\eta_i</math>: parameter of production efficiency, <math>\beta_a, \beta_b</math>: distribution parameter</p>
2) Location chooses behavior model	
Households' behavior	<p>Probability for location chooses behavior formulated by the logit model.</p> $P_i^H = \frac{\exp \theta^H (V_i + \tau_i^H)}{\sum_i \exp \theta^H (V_i + \tau_i^H)} \quad (25)$ $N_i = P_i^H \cdot N_T \quad (26)$ <p><math>i</math>: zone, <math>P_i^H</math>: location choice probability for household, <math>N_i</math>: population of each zone, <math>N_T</math>: total population of simulation coverage area, <math>\theta^H</math>: logit parameter for location choice model, <math>V_i</math>: utility level, <math>\tau_i^H</math>: other factor apart from utility level</p>
Firms' behavior	<p>Probability for location chooses behavior formulated by the logit model.</p> $P_i^B = \frac{\exp \theta^B (\prod_i + \tau_i^B)}{\sum_i \exp \theta^B (\prod_i + \tau_i^B)} \quad (27)$ $E_i = P_i^B \cdot E_T \quad (28)$ <p><math>i</math>: zone, <math>P_i^B</math>: location choice probability for firm, <math>E_i</math>: employees of each zone, <math>E_T</math>: total employees of simulation coverage area, <math>\theta^B</math>: logit parameter, <math>\prod_i</math>: utility level, <math>\tau_i^B</math>: other factor apart from utility level</p>

3) Demand of residential/business land and generation of private/business trip	
Households' behavior	<p>Demand of residential land and generation of private trip formulated by the following.</p> $ZA_i^H = a_i^H P_i^H N_T \quad (29)$ $ZX_i^H = x_i^H P_i^H N_T \quad (30)$ <p><math>i</math>: zone, <math>ZA_i^H</math>: demand of residential land, <math>ZX_i^H</math>: number of private trip, <math>P_i^H</math>: location choice probability for household, <math>N_T</math>: total population of simulation coverage area, <math>a_i^H</math>: consumption of land service (residential area), <math>x_i^H</math>: consumption of private trip</p>
Firms' behavior	<p>Demand of business land and generation of business trip formulated by the following.</p> $ZA_i^B = a_i^B P_i^B E_T \quad (31)$ $ZX_i^B = x_i^B P_i^B E_T \quad (32)$ <p><math>i</math>: zone, <math>ZA_i^B</math>: demand of business land, <math>ZX_i^B</math>: number of business trip, <math>P_i^B</math>: location choice probability for firm, <math>E_T</math>: total employees of simulation coverage area, <math>a_i^B</math>: consumption of land service (business area), <math>x_i^B</math>: consumption of business trip</p>

Table 10. Behavior model for landowners

Land supply by the absentee landowner	
The absentee landowner supplies the land for the households and firms with the land supply function by the following.	
Residential market	$y_i^H = \left(1 - \frac{\sigma_i^H}{r_i^H}\right) Y_i^{HO} \quad (33)$ <p><math>y_i^H</math>: supply area for residential land, <math>Y_i^{HO}</math>: available supply area for residential land, <math>\sigma_i^H</math>: parameter, <math>r_i^H</math>: land rent for residential</p>
Business market	$y_i^B = \left(1 - \frac{\sigma_i^B}{r_i^B}\right) Y_i^{BO} \quad (34)$ <p><math>y_i^B</math>: supply area for business land, <math>Y_i^{BO}</math>: available supply area for business land, <math>\sigma_i^B</math>: parameter, <math>r_i^B</math>: land rent for business</p>

Table 11. Equilibrium conditions

Residential zone market	Population	Business zone market	Employee
$y_i^H = ZA_i^H \quad (35)$	$\sum_i N_i = N_t \quad (36)$	$y_i^B = ZA_i^B \quad (37)$	$\sum_i E_i = E_t \quad (38)$

### 4.3 Formulation of Transportation Behavior

The transportation model consists of the trip generation model, the choice of destination model, and choice of transportation mode model. Table 12 shows each transportation model

Table 12. Transportation models

1) Trip generation model	
Passenger [usual trip]	<p>Private, commuting, and business trips generated formulated by the following.</p> $ZX_i^{WS} = \mu_i^{WS} P_i^H N_T \quad (39)$ $ZX_i^H = x_i^H P_i^H N_T \quad (40)$ $ZX_i^B = x_i^B P_i^B E_T \quad (41)$ <p><math>i</math>: zone(origin), <math>ZX_i^{WS}</math>: amount of trip generation for commuting trip, <math>ZX_i^H</math>: amount of trip generation for private trip, <math>ZX_i^B</math>: amount of trip generation for business trip, <math>P_i^H</math>: location choice probability for household, <math>P_i^B</math>: location choice probability for firm, <math>N_T</math>: total population of simulation coverage area, <math>E_T</math>: total employees of simulation coverage area, <math>\mu_i^{WS}</math>: consumption rate of trip generation for commuting, <math>x_i^H</math>: consumption of private trip, <math>x_i^B</math>: consumption of business trip</p>

Passenger [visitor trip from airport]	Private and commuting trips generated formulated by the following. $ZX_i^{H'} = ARV \cdot \frac{R^H}{R^H + R^B} \quad (42)$ $ZX_i^{B'} = ARV \cdot \frac{R^B}{R^H + R^B} \quad (43)$ <i>i</i> : zone (origin), $ZX_i^{H'}$ : commuting trip generated at Taoyuan airport, $ZX_i^{B'}$ : private trip generated at Taoyuan airport, $ARV$ : amount of arrivals at Taoyuan airport, $R^H$ : composition rate of visitors coming to Taiwan for pleasure, $R^B$ : composition rate of visitors coming to Taiwan for business
<b>2) Destination Choice Model</b>	
Passenger [usual trip]	Probability for choice of destination formulated by the logit model. $P_{ij}^m = \frac{\exp(V_{ij}^m)}{\sum_{j'} \exp(V_{ij'}^m)} \quad (44)$ $V_{ij}^m = \theta_1^m \ln S_j^m + \lambda^m ACC_{ij}^m \quad (45)$ $ACC_{ij}^m = \ln \sum_k \exp(V_{ijk}^m) \quad (46)$ <i>i</i> : zone (origin), <i>j</i> : zone (destination), <i>m</i> : purpose of trip, $m \in \{WS(commute), H(private), B(business)\}$ , <i>k</i> : mode of trip, $k \in \{c(car), r(railway), b(bus), s(motorcycle)\}$ , $P_{ij}^m$ : destination choice probability, $V_{ij}^m$ : utility level of purpose : <i>m</i> , $S_j^m$ : ability of attracting customers index for destination : <i>j</i> of purpose : <i>m</i> , $ACC_{ij}^m$ : accessibility index of purpose : <i>m</i> , $V_{ijk}^m$ : utility level of transportation <i>k</i> and purpose <i>m</i> , $\theta_1^m$ : ability of attracting customers index of purpose : <i>m</i> , $\lambda^m$ : parameter of accessibility index of purpose <i>m</i> (log sum parameter)
Passenger [visitor trip from airport]	Probability for choice of destination formulated by the logit model. 1) Private trip $P_j^m = \frac{NT_j^m}{\sum_{j'} NT_{j'}^m} \quad (47)$ <i>j</i> : zone (destination), $NT_j^m$ : number of tourists 2) Business trip $P_{ij}^m = \frac{\exp(V_{ij}^m)}{\sum_{j'} \exp(V_{ij'}^m)} \quad (48)$ $V_{ij}^m = \theta_1^m \ln S_j^m + \lambda^m ACC_{ij}^m \quad (49)$ $ACC_{ij}^m = \ln \sum_k \exp(V_{ijk}^m) \quad (50)$ <i>i</i> : zone(origin), <i>j</i> : zone(destination) <i>m</i> : purpose of trip, $m \in \{WS(commute), H(private), B(business)\}$ <i>k</i> : mode of trip, $k \in \{c(car), r(railway), b(bus), s(motorcycle)\}$ $P_{ij}^m$ : destination choice probability, $V_{ij}^m$ : utility level by purpose <i>m</i> , $S_j^m$ : ability of attracting customers index for destination: <i>j</i> of purpose: <i>m</i> , $ACC_{ij}^m$ : accessibility index of purpose: <i>m</i> , $V_{ijk}^m$ : utility level of transportation <i>k</i> and purpose <i>m</i>
<b>3) Transportation Mode Choice Model</b>	
Passenger [usual trip]	Probability for choice of transportation mode formulated by the logit model. $P_{ijk}^m = \frac{\exp(V_{ijk}^m)}{\sum_{k'} \exp(V_{ijk'}^m)} \quad (51)$ $V_{ijc}^m = \theta_2^m t_{ij}^c + \beta_2^m n_{ij} + \beta_3^m u + a_c^m \quad (52)$ $V_{ijr}^m = \theta_2^m t_{ij}^r + \beta_2^m n_{ij} + a_r^m \quad (53)$ $V_{ijb}^m = \theta_2^m t_{ij}^b + \beta_2^m n_{ij} + a_r^m \quad (54)$ $V_{ijs}^m = \theta_2^m t_{ij}^s + \beta_1^m d_{ij} + \beta_2^m n_{ij} \quad (55)$



Passenger [visitor trip from airport]	$P_{ijk}^m = \frac{\exp(V_{ijk}^m)}{\sum_{k'} \exp(V_{ijk'}^m)} \quad (56)$ $V_{ijc}^m = \theta_2^m t_{ij}^c + \beta_2^m n_{ij} + \beta_3^m u + a_c^m \quad (57)$ $V_{ijr}^m = \theta_2^m t_{ij}^r + \beta_2^m n_{ij} + a_r^m \quad (58)$ $V_{ijb}^m = \theta_2^m t_{ij}^b + \beta_2^m n_{ij} + a_r^m \quad (59)$ $V_{ijs}^m = \theta_2^m t_{ij}^s + \beta_1^m d_{ij} + \beta_2^m n_{ij} \quad (60)$	
<i>i</i> : zone (origin), <i>j</i> : zone (destination) <i>k</i> : mode of trip $k \in \{c(car), r(railway), b(bus), s(motorcycle)\}$ $P_{ijk}^m$ : share ratio of transportation mode <i>k</i> by purpose <i>m</i> , $V_{ijk}^m$ : utility level of transportation mode <i>k</i> by purpose <i>m</i> , $V_{ijk}^m$ : utility level of transportation mode <i>k</i> by purpose <i>m</i> , $t_{ij}^c$ : generalized cost (time) of car, $t_{ij}^r$ : generalized cost (time) of railway, $t_{ij}^b$ : generalized cost (time) of bus, $t_{ij}^s$ : generalized cost (time) of scooter, $d_{ij}$ : dummy variable of distance among <i>ij</i> (if link <i>ij</i> < 8 km: 0, link <i>ij</i> > 8 km: 1), $n_{ij}$ : occurrence ratio of traffic accident among <i>ij</i> , <i>u</i> : dummy variable of car preference (car: 1, other: 0), $\theta_2^m$ : parameter of generalized cost by purpose <i>m</i> , $\beta_1^m$ : parameter of distance dummy by purpose <i>m</i> $\beta_1^m \in (1,0)$ , $\beta_2^m$ : parameter of traffic accident by purpose <i>m</i> , $\beta_3^m$ : parameter of car preference dummy, $\beta_3^m \in (1,0)$ , $a_c^m$ : constant term of car by purpose <i>m</i> , $a_r^m$ : constant term of railway by purpose <i>m</i>		

## 5. ESTIMATION OF PARAMETERS

### 5.1 Land use model section

The values of spend distribution parameters and production function parameters are quoted from Chen *et al.* (2013), which are applied to the land use model. These values were estimated using the least-squares method in the demand function on the utility maximization issue of households and profit maximization behavior of firms.

Table 13. Distribution parameters

	Consumption of residential lands	Trip generated for private purposes	Consumption of residential lands
	$\alpha_a$	$\alpha_x$	$\alpha_z$
Parameter	0.0107	0.2693	0.7200
t-statics	4.16	16.16	- [ $1 - \alpha_a - \alpha_x$ ]

Table 14. Production function parameters

	Consumption of commercial lands	Trip generated for business purpose
	$\beta_a$	$\beta_b$
Parameter	0.0037	0.0680
t-statics	3.63	5.50

### 5.2 Transportation model section

The values of the destination choice parameters and transportation mode choice parameters, which are quoted from Chen *et al.* (2013), are applied to the transportation model. These values are estimated using the personal trip data in Taiwan.

Table 15. Parameters of the destination choice model [Passenger trip]

	Commute/School		Private		Business	
	Parameter	t-statics	Parameter	t-statics	Parameter	t-statics
Accessibility index : $\lambda^m$	-0.0088	-24.2	-0.0099	-23.5	-0.0045	-22.4
Attracting customers Index: $\theta_1^m$	10.8169	9.6	10.8865	9.7	14.2815	15.4
Likelihood ratio: $\rho^2$	0.36		0.36		0.34	

Table 16. Parameters of the transportation mode choice model

	Commute/School		Private		Business	
	Parameter	t-statics	Parameter	t-statics	Parameter	t-statics
Generalized cost : $\theta_2^m$	-0.0058	-16.1	-0.0049	-11.6	-0.0027	-10.9
Distance dummy : $\beta_1^m$	-0.2926	-9.8	-0.1192	-3.9	--	--
Accident variable : $\beta_2^m$	--	--	--	--	-0.1725	-3.2
Preference dummy: $\beta_3^m$	--	--	--	--	-0.8051	-36.8
Car constant term : $a_c^m$	-1.2196	-45.0	-0.3398	-12.7	0.4843	19.9
Train constant : $a_r^m$	-1.483	-73.3	-1.113	-47.9	-1.5628	-65.7
Likelihood ratio : $\rho^2$	0.48		0.27		0.83	

## 6. RESULTS OF CUE SIMULATION

### 6.1 Simulation case

The target area of the simulation is the northern area of Taiwan, centering on Taoyuan city, and the target year is 2021. The simulation results for 2021 are compared with those of 2009 (refer to Table 17). Table 5 shows a list of the transportation network model in 2009 and 2021. Although the Taoyuan Aerotropolis is scheduled to be completed in 2041, we quote the target values of the development in 2021 from the master plan by the government of Taiwan.

Table 17. Simulation cases

Year	Railway		Road way		Taoyuan Aerotropolis
	Existing	Future	Existing	Future	
Case1 2009	✓		✓		
Case2 2021	✓	✓	✓	✓	✓

### 6.2 Future of setting scenario

Table 18 shows growth rates of the economy, population, and employees for 2021. We estimate each growth rate in 2021 by multiplying that in 2009.

Table 18. Growth rate of rate of the economy, population, and employees

Item	Growth rate [2009 to 2021]	Reference
GRP	1.40	Quoting the GDP growth ratio [%/year] for the whole of Taiwan
Population	1.05	Calculating the population growth rate using the estimated result of future population for the whole of Taiwan and the current population ratio of the northern area of Taiwan (Taoyuan City, Taipei City, New Taipei City, Keelung City) to that of the whole of Taiwan.
Employee	1.23	Calculating the employee growth rate using the average growth ratio on the labor supply and demand in the northern area of Taiwan and the number of future employees in the whole of Taiwan.

### 6.3 Calculation method of CO<sub>2</sub> emissions

Two calculation cases for CO<sub>2</sub> emissions in 2021 were conducted. One case incorporated transportation and the other case did not. The case with transportation conducts transportation infrastructure development in the 2021 situation, whereas the case of without transportation does not conduct transportation infrastructure development in the 2021 situation.

The amount of CO<sub>2</sub> emission is calculated using the formula shown below. The car and motorcycle transportation modes were the focus of this examination, and the total amount of CO<sub>2</sub> emission is calculated as the sum of what was generated from each road link in the northern area of Taiwan. CO<sub>2</sub> emission intensity is a function of the driving speed of the car or motorcycle, and the shape of the function is in the form convex-downward, whose horizontal axis is the driving speed and whose vertical axis is the CO<sub>2</sub> emission intensity. When the traffic demand of a road link has increased, traffic congestion will occur in the road link and the driving speed will be reduced. As a result, the amount of CO<sub>2</sub> emissions generated from that road link, as well as the CO<sub>2</sub> emission intensity, will increase. In this study, the CO<sub>2</sub> emission intensity described above is based on Japanese data. The reason for this is that CO<sub>2</sub> emission intensity was not available from the Taiwan government. Therefore, the evaluation method for both calculation cases was compared by using the variation ratio of CO<sub>2</sub> emission from 2009 to 2021.

$$CO_{2l} = T_l \cdot D_l \cdot f(v_l) \quad (61)$$

where,

- CO<sub>2l</sub>: amount of vehicle CO<sub>2</sub> emissions in road link  $l$ ,
- $T_l$ : number of vehicle trips of car and motorcycle in road link  $l$ ,
- $D_l$ : length of road link  $l$ ,
- $v_l$ : driving speed in road link  $l$ , and
- $f(v_l)$ : CO<sub>2</sub> emission intensity by driving speed.

### 6.4 Evaluation of simulation results

Figure 10 shows the simulation results for the variation in population density and employee density. Figure 11 shows the change in the land value. Both figures show the differences in each zone between 2009 and 2021. If the planned land use development and transportation development are achieved by 2021, the population density and the employee density will increase intensively around the Red Line and Green Line stations. In particular, the rate of population increase around the stations is 7%, and 74% around the Taoyuan Aerotropolis. Similarly, the rate of increase for employees is 25% around the stations and 100% around the Taoyuan Aerotropolis. In addition, the land value along the railway lines increases, especially at the connection point between the Green Line and Red Line. The residential and business areas are reallocated around the railway stations by land use development and transportation development. In particular, the rate of increase for residential land value is 3%, and the rate of increase for business land value is 11% around the stations. As a result, this area is converted to an urban form based on TOD with centering of the stations of railway transportation.

The number of passengers using public transportation increases, as evidenced by the increased number of railway and bus trips (refer to Figure 12 a). However, the main transportation modes are cars and motorcycles, which comprise 75% of the total travel behavior in Taoyuan City (refer to Figure 12 b). As a result, in terms of overall transportation mode variation in Taoyuan City, the effect of increased public transportation is limited.

Therefore, it is necessary to reduce the utilization ratio of cars and motorcycles by applying new urban and transportation policies. This is needed in order to realize the development plan using TOD, in which residents and visitors are assumed to use public transportation. On the other hand, one of the reasons for the limited variation in transportation mode in Taoyuan City is that the parameter of generalized cost,  $\theta_2^m$ , is too small. Therefore, the effect of transportation convenience improvement by transportation infrastructure development is limited. The number of passengers using public transportation might have been less than expected. Although, in this study, all parameters for transportation mode choice were quoted from the previous study by Chen *et al.* (2013), we will need to re-estimate all parameters in a future study.

In addition, when we compared the results of urban development with transportation to urban development without transportation, the reduction ratio of CO<sub>2</sub> emissions per capita from cars and motorcycles was 0.5% in the entirety of the northern area of Taiwan. Although 0.5% is a small amount, the transportation development plan from Taoyuan City seems to have the potential to control the amount of CO<sub>2</sub> emissions from cars and motorcycles, while considering the increase in traffic demand due to the population growth in that area. This result indicates the realization of a reduction in CO<sub>2</sub>, which is expected as an effect of TOD.

While the ratio of passengers using public transportation increased among the four transportation modes in Taoyuan City, residents and employees still chose to use cars and motorcycles in their daily life. This seems to be because the existing public transportation in Taoyuan City is not sufficient. In addition, it is expected that the behavior range for residents will become wider as a response to traffic development, and the number of trips from Taoyuan City to cities with large groups of businesses, such as Taipei City, will increase. In this sense, one of the concerns is that it is difficult for Taoyuan City to develop a compact urban form as a center for railway stations, which is the basic concept of TOD. Besides the transportation development plan, it will be necessary to combine other policies to realize TOD in Taoyuan City. For example, Japanese TOD by private railway companies coordinates the lifestyles of people along their railway lines not only by developing the residential areas and business areas, but also by developing commercial or entertainment facilities. This was one of the keys to realizing the urban form centering around the stations of railway transportation.

To realize urban development based on TOD in Taoyuan City, it is necessary to integrate transportation development and other detailed policies, such as limiting the use of cars and motorcycles around the railway stations, and promoting home building and industries within walking distance from the stations.

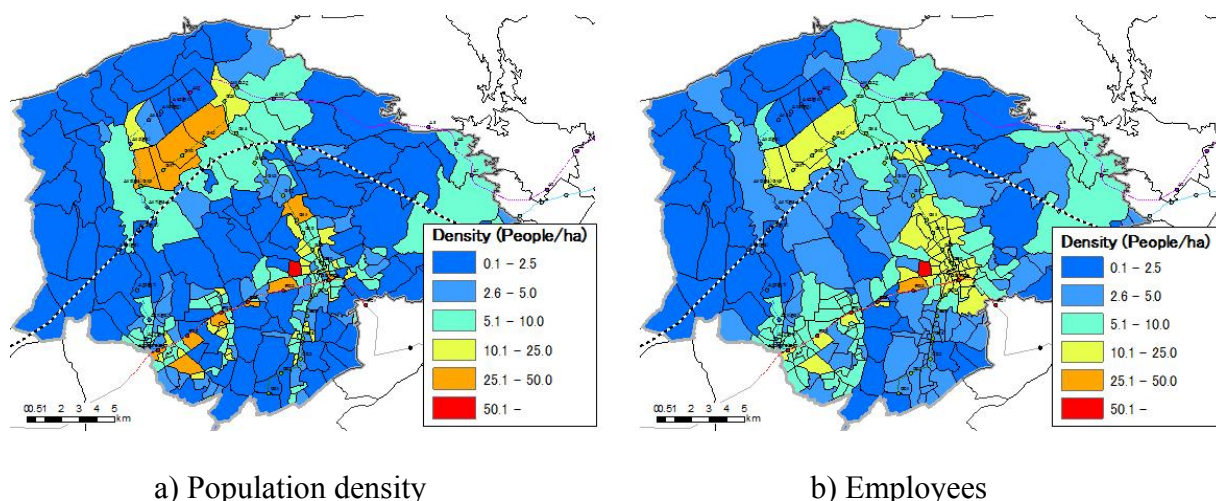
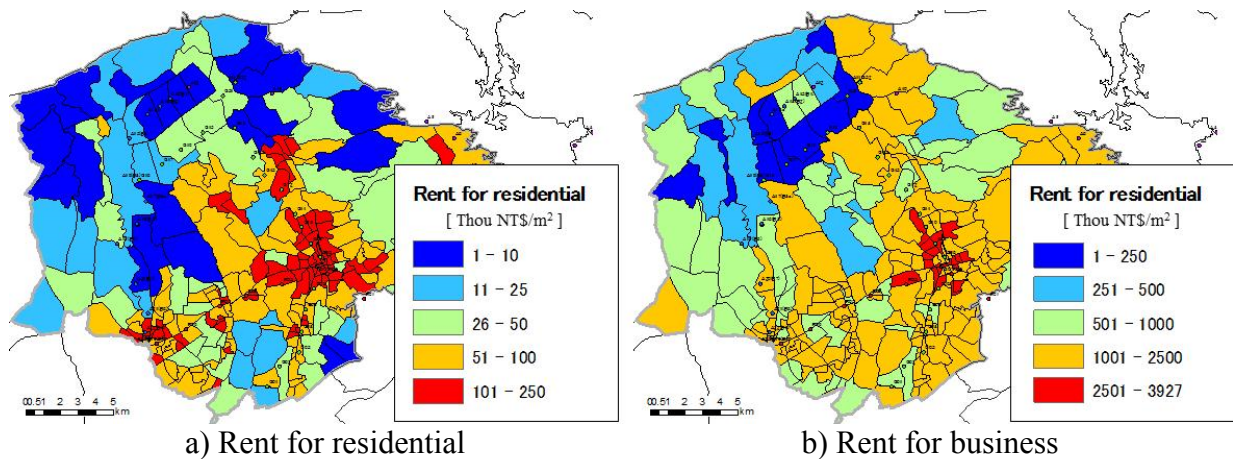
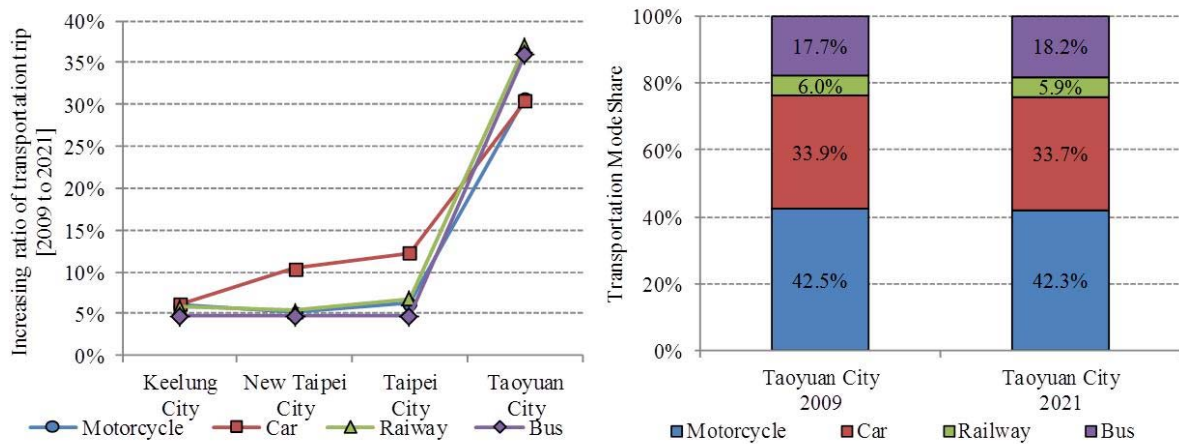


Figure 10. Simulation result of population and employee differences between 2009 and 2021



a) Rent for residential  
b) Rent for business  
Figure 11. Simulation results for land value differences between 2009 and 2021



a) Increasing ratio of transportation trip  
b) Transportation mode in 2009 & 2021  
Figure 12. Simulation result of transportation modes

## 7. CONCLUSIONS

In this paper, we have built a detailed spatial scale CUE using our estimation approach of the land use area by using satellite images.

The paper has obtained detailed scale land use information in Taoyuan City, Taiwan, where the land use data is not sufficient, by an estimation approach.

In addition, the detailed spatial scale CUE model in Taoyuan City gives us the simulation results of the travel behavior and the change of land use at a level of the area of each railway station unit. It is on a scale large enough to evaluate the transportation and land use development plan based on TOD.

We have confirmed that, through the results of the simulation in Taoyuan City, the detailed spatial scale CUE model has the potential to be applied to any other Asian and ASEAN countries where land use data are not sufficient.

There remain a few issues for future work in order to improve this study.

First, it is necessary to assess the suitable grid cell size in order to ensure sufficient accuracy of the approach of estimating land use area using satellite imagery.

Second, the estimation approach of land use area is required to be efficient. An

automatic decision algorithm for land use should be developed.

Finally, it is necessary to improve the accuracy of our estimation approach and the CUE model. Therefore, it is necessary to apply them to other cities in Asia. Moreover, it is necessary to observe the situation of urban development in the examined city and constantly obtain updated data, because the local government does not prepare existing actual land use data for assessing the accuracy of our estimation approach.

## ACKNOWLEDGMENTS

In preparing this paper, we quoted important basic data from “An Impact Analysis of the Taiwan Taoyuan International Airport Access MRT System – Considering the interaction between land use and transportation behavior.” We express our gratitude to Hsin-Ti Chen (Graduate student, Faculty of Engineering, Information and Systems, University of Tsukuba) and Kazuki Iwakami (Value Management Institute, Ltd.), who are the authors of the article.

## REFERENCES

- Chen, H., Tsutsumi, M., Yamasaki, K., Iwakami, K. (2013). An impact analysis of the Taiwan Taoyuan international airport access MRT system – considering the interaction between land use and transportation behavior. *Journal of the Eastern Asia Society for Transportation Studies*, 10, 315–334.
- Muto, S., Akiyama, T., Takagi, A. (2000). Econometric evaluation of an urban road network project considering the spatial structure change. *Traffic Engineering*, 44, 205–214 (in Japanese).
- Taniguchi, M. (2009). “Compact city” and “transport oriented development”: History, philosophy and reality. *Urban planning*, 58(5), 5–8 (in Japanese).
- Tsutsumi, M., Yamasaki, K., Koike, A., Seya, H. (2012). Computable urban economics models: current issue and perspectives. *Japan Society of Civil Engineers*, 68(4), 344–357 (in Japanese).
- Ueda, T. (1991). A model analysis on the impact of transport improvement on household locations through increase in opportunities for life activities. *Infrastructure Planning Review*, 9, 237–244 (in Japanese).
- Ueda, T. (1992). A general equilibrium model with re-defined location surplus. *Infrastructure Planning Review*, 10, 183–190 (in Japanese).
- Ueda, T., Tsutsumi, M., Muto, S., Yamasaki, K. (2013). Unified computable urban economic model. *The annals of regional science*. 50(1), 341–362.
- Yamasaki, K., Ueda, T., Iwakami, K. (2008). Evaluation of the economic effects by reducing the fare on Tokyowan Aqua-Line (TWAL) with endogenous developed population and induced/developed traffic. *Expressways and Automobiles*, 51(6), 20–32 (in Japanese).
- Yamasaki, K., Ueda, T., Muto, S. (2013). Impacts of transport infrastructure policies in population-declining metropolitan area. *Metropolitan Regions Advances in Spatial Science 2013*, 425–449.