

RESEARCH ARTICLE

Different Effects of Eicosapentaenoic and Docosahexaenoic Acids on Atherogenic High-Fat Diet-Induced Non-Alcoholic Fatty Liver Disease in Mice

Noriko Suzuki-Kemuriyama^{1,2}, Takashi Matsuzaka¹, Motoko Kuba¹, Hiroshi Ohno¹, Song-
iee Han¹, Yoshinori Takeuchi¹, Masaaki Isaka¹, Kazuto Kobayashi¹, Hitoshi Iwasaki¹,
Shigeru Yatoh¹, Hiroaki Suzuki¹, Katsuhiro Miyajima², Dai Nakae², Naoya Yahagi¹,
Yoshimi Nakagawa^{1,3}, Hirohito Sone⁴, Nobuhiro Yamada¹, Hitoshi Shimano^{1,3,5*}

1 Department of Internal Medicine (Endocrinology and Metabolism), Faculty of Medicine, University of Tsukuba, 1-1-1 Tennodai, Tsukuba, Ibaraki 305–8575, Japan, **2** Department of Nutritional Science and Food Safety, Faculty of Applied Bioscience, Tokyo University of Agriculture, 1-1-1 Sakuragaoka, Setagaya-ku, Tokyo 156–8502, Japan, **3** International Institute for Integrative Sleep Medicine (WPI-IIS), University of Tsukuba, 1-1-1 Tennodai, Tsukuba, Ibaraki 305–8575, Japan, **4** Department of Internal Medicine, Faculty of Medicine, Niigata University, 1–754 Asahimachi, Niigata 951–8510, Japan, **5** AMED-CREST, Japan Agency for Medical Research and Development (AMED), 1-7-1, Ohte-machi, Chiyoda-ku, Tokyo, 100–0004, Japan

* hshimano@md.tsukuba.ac.jp



OPEN ACCESS

Citation: Suzuki-Kemuriyama N, Matsuzaka T, Kuba M, Ohno H, Han S-i, Takeuchi Y, et al. (2016) Different Effects of Eicosapentaenoic and Docosahexaenoic Acids on Atherogenic High-Fat Diet-Induced Non-Alcoholic Fatty Liver Disease in Mice. PLoS ONE 11(6): e0157580. doi:10.1371/journal.pone.0157580

Editor: Hervé Guillou, INRA, FRANCE

Received: March 1, 2016

Accepted: June 1, 2016

Published: June 22, 2016

Copyright: © 2016 Suzuki-Kemuriyama et al. This is an open access article distributed under the terms of the [Creative Commons Attribution License](https://creativecommons.org/licenses/by/4.0/), which permits unrestricted use, distribution, and reproduction in any medium, provided the original author and source are credited.

Data Availability Statement: All relevant data are within the paper and its Supporting Information files.

Funding: This work was supported by Grants-in-Aid for Scientific Research 22117502 (to H.S.), 15H03093 (to T.M.), and Program to Disseminate Tenure Tracking System (to T.M.) from the Ministry of Science, Education, Culture, and Technology of Japan. This work was also supported in part by Mochida Pharmaceutical Co. Ltd., who also provided highly purified EPA ethyl ester. Co-author Hiroyuki Kawano and Masanori Nakakuki are employed by Mochida Pharmaceutical Co. Ltd. Mochida

Abstract

Non-alcoholic fatty liver disease (NAFLD), the hepatic manifestation of metabolic syndrome, can progress to steatohepatitis (NASH) and advanced liver damage, such as that from liver cirrhosis and cancer. Recent studies have shown the benefits of consuming n-3 polyunsaturated fatty acids (PUFAs) for the treatment of NAFLD. In the present study, we investigated and compared the effects of the major n-3 PUFAs—eicosapentaenoic acid (EPA, C20:5) and docosahexaenoic acid (DHA, C22:6)—in preventing atherogenic high-fat (AHF) diet-induced NAFLD. Mice were fed the AHF diet supplemented with or without EPA or DHA for four weeks. Both EPA and DHA reduced the pathological features of AHF diet-induced NASH pathologies such as hepatic lobular inflammation and elevated serum transaminase activity. Intriguingly, EPA had a greater hepatic triacylglycerol (TG)-reducing effect than DHA. In contrast, DHA had a greater suppressive effect than EPA on AHF diet-induced hepatic inflammation and ROS generation, but no difference in fibrosis. Both EPA and DHA could be effective for treatment of NAFLD and NASH. Meanwhile, the two major n-3 polyunsaturated fatty acids might differ in a relative contribution to pathological intermediate steps towards liver fibrosis.

Introduction

Non-alcoholic fatty liver disease (NAFLD) is the most common chronic liver disease in all contemporary societies [1–4]. NAFLD is characterized by not only steatosis but also lobular

Pharmaceutical Co. Ltd. provided support in the form of salary for Hiroyuki Kawano and Masanori Nakakuki, but had no additional role in study design, data collection and analysis, decision to publish, or preparation of the manuscript.

Competing Interests: Masanori Nakakuki and Hiroyuki Kawano are employees of Mochida Pharmaceutical Co. Ltd., which funded this study and provided highly purified EPA ethyl ester. There are no other potential conflicts of interest relevant to this article. This does not alter the authors' adherence to PLOS ONE policies on sharing data and materials.

inflammation and fibrosis of the liver. Non-alcoholic steatohepatitis (NASH) belongs to the spectrum of NAFLD, develops inflammatory changes, and can sometimes progress to cirrhosis and hepatocellular carcinoma [5,6]. It has been proposed that NAFLD/NASH is associated with metabolic abnormalities, including obesity, insulin resistance, and dyslipidemia, as well as with cardiovascular disease events [7–9]. The mechanisms of disease progression in NASH are not completely understood yet.

It has been hypothesized that the development of NASH requires two “hits” [10]. In this hypothesis, the first hit represents the development of hepatic steatosis. The second hit involves oxidative stress and proinflammatory cytokines which induce further liver injury. It is also proposed that inflammation results in a stress response of hepatocytes, may lead to lipid accumulation, and thus could precede steatosis in NASH [11–13]. Recently, growing evidence suggests that simple steatosis and NASH are two separate diseases. In this “multiple parallel hit” hypothesis, the accumulated lipotoxic/pro-inflammatory lipid species interact with pro-inflammatory factors to cause progression to NASH, whereas in other cases, the liver develops steatosis and remains free of inflammation [14–16]. Very diverse processes, including toxic lipids, nutrients, and other macrophage- and adipose-derived signals, may represent such inflammatory insults. Thus, a mechanism combining metabolic changes and inflammation is important in early stages of the NASH pathological process.

Recent studies suggest that types of fat sensitize hepatocytes to the inflammation progress [17]. We recently reported that a change in long-chain fatty acid composition via Elov16 modulates the progress of NASH [18,19]. Dietary fish oil, which contains large amounts of polyunsaturated fatty acids (PUFAs) of the n-3 family, improves whole-body lipid metabolism, inflammation, and cardiovascular disease [20–23]. In addition, we and others have reported that fish oil suppresses hepatosteatosis [24–26], although there are compelling reports for human studies against the effects of these PUFAs on hepatosteatosis or fibrosis [27,28].

The major long chain n-3 PUFAs are eicosapentaenoic acid (EPA, C20:5 n-3) and docosahexaenoic acid (DHA, C22:6 n-3), derived principally from fish oil. Although several reports have described the preventive effects of EPA or DHA in experimentally induced NAFLD [27–31], most studies have used either EPA or DHA, and few studies have compared the efficacy of EPA and DHA in improving NAFLD. Recently, Depner *et al.* reported that the capacity of dietary DHA to suppress hepatic inflammation, fibrosis, and oxidative stress was significantly greater than that of dietary EPA in a low-density lipoprotein receptor (LDLR) knockout mouse model of western diet-induced NASH [32]. Moreover, Watanabe *et al.* reported that EPA supplementation reduced hepatic cholesterol ester accumulation but aggravated liver injury and associated inflammatory responses in a mouse model of sodium cholate-supplemented high-fat diet-induced steatohepatitis [33]. In the present study, we investigated and compared the effects of the major n-3 PUFAs, EPA and DHA, on attenuation of atherogenic high-fat (AHF) diet-induced NAFLD.

Materials and Methods

Materials

EPA ethyl ester and DHA ethyl ester (95% grade) were provided by Mochida Pharmaceutical (Tokyo, Japan). Standard laboratory chow (composed of 60% carbohydrate, 13% fat, and 27% protein on a caloric basis) were purchased from Oriental Yeast (Tokyo, Japan). An AHF diet was prepared by modification of a high-fat–high-sucrose diet with 1.25% cholesterol and 0.5% cholate (Oriental Yeast, Tokyo, Japan) [18]. The dietary component of AHF and fatty acid composition of each diet are presented in S1 and S2 Tables, respectively.

Animals

All animal husbandry and experiments were performed in compliance with the guiding principle of the University of Tsukuba and were approved by the Animal Experiment Committee of the University of Tsukuba. Thirteen-week-old male C57BL/6J mice were purchased from Clea Japan and adapted to the environment for one week prior to study. Mice were housed in colony cages with a 12-h light/12-h dark cycle and given free access to food and water. At 14 weeks of age, mice were randomly allocated to the following four diet groups of 12–15 animals each. The groups were assigned to the standard laboratory rodent chow, the AHF diet, the AHF diet supplemented with 5% EPA, or the AHF diet supplemented with 5% DHA. The diets were changed every other day to prevent the formation of oxidation products. Mice were given each diet for four weeks and body weight was monitored weekly. At the end of the period, all mice were sacrificed in the early light phase in a non-fasting state.

Histological analysis

Livers were removed, fixed in 10% buffered formalin, embedded in paraffin, and cut into 4- μ m-thick sections for haematoxylin and eosin (H&E) staining. Immunohistochemical staining for F4/80 (Abcam, Cambridge, UK) and N ϵ -(Hexanoyl) Lysine (HEL, JAICA, Shizuoka, Japan) were also performed. Briefly, deparaffinized sections were heated in citrate buffer to accomplish antigen retrieval. Endogenous peroxidase activity was blocked with 1% hydrogen peroxide in PBS for 30 min. Next, the sections were incubated with a primary antibody overnight at 4°C, followed by treatment with a labeled polymer anti-rat IgG or anti-mouse IgG (Nichirei Bioscience, Tokyo, Japan) for 30 min at room temperature. The antibody-peroxidase complex was visualized using diaminobenzidine (Nichirei Bioscience, Tokyo, Japan), and sections were counterstained with hematoxylin. Sirius red staining was performed as described previously [18].

Blood chemistries and liver lipid analyses

Blood samples were obtained by orbital bleeding. Enzymatic assays for glucose, triglycerides (TG), total cholesterol (T-Cho), free fatty acids (FFA), alanine aminotransferase (ALT), and aspartate aminotransferase (AST) levels were performed using colorimetry test kits purchased from Wako Pure Chemical Industries (Osaka, Japan). Plasma insulin levels were determined using a mouse insulin ELISA kit (Shibayagi, Gunma, Japan) according to the manufacturer's protocol. Hepatic TG and T-Cho levels were measured as described previously [34].

Fatty acid composition of liver

Total lipids in liver were extracted by Bligh-Dyer's procedure, and the relative abundance of each FA was quantitatively measured by LC-MS/MS as previously reported (JCL Bioassay Laboratories, Osaka, Japan) [35]. Briefly, internal solution was spiked to all samples (20 μ l), obtained by lipid extraction as described above, and to calibration standard samples, and the samples were evaporated by nitrogen gas. Following the addition of acetonitrile/6N HCl (90/10, v/v), samples were incubated at 100°C for 45 min. Finally, liquid-liquid extraction with ethyl acetate was performed and the reconstituted samples were injected into an optimized LC-MS/MS system. LC was performed using an ACQUITY UPLC with a YMC-Triart C18 (YMC Co., Ltd., Kyoto, Japan) and a linear gradient of a combination of two mobile phases, and an API4000 triple quadrupole tandem mass spectrometer was used as a detector using atmospheric pressure chemical ionization in negative ionization with selected reaction monitoring mode. The relative contents of the respective FAs were calculated from the LC-MS/MS chromatogram.

RNA extraction and quantitative real-time PCR

Total RNA was extracted from livers using Sepasol reagent (Nacalai Tesque, Kyoto, Japan) and reverse-transcribed using the PrimeScript RT Master kit (Takara Bio Inc., Shiga, Japan) according to the manufacturer's protocols. Quantitative real-time PCR (qPCR) was performed using SYBR Premix Ex Taq (Takara Bio Inc. Shiga, Japan) and specific primer sets with the Thermal Cycler Dice Real Time System Single (Takara Bio Inc. Shiga, Japan). Primer sequences for qPCR in this study have been described previously [18,19,34,36]. The expression levels of mRNA were normalized to those of cyclophilin mRNA.

Immunoblotting

Immunoblotting was performed as described previously [34]. Aliquots of nuclear extract (25 µg) and total lysate (50 µg) proteins extracted from livers were loaded onto 10% SDS-PAGE gels and transferred to PDVF membranes (Millipore, Darmstadt, Germany). The membranes were probed with anti-SREBP-1 (Santa Cruz Biotechnology, Dallas, USA), lamin A/C, phospho-JNK, and total JNK (Cell Signaling Technology, Denver, USA) followed by horseradish peroxidase (HRP)-conjugated anti-mouse or rabbit IgG (Cell Signaling Technology, Denver, USA). Immune complexes were visualized using enhanced chemiluminescence (GE Healthcare Japan, Tokyo, Japan).

Determination of hepatic 8-OHdG levels in liver

DNA was isolated from the livers using the DNA Extractor TIS Kit (Wako, Osaka, Japan), and hepatic 8-OHdG levels were determined as described using a competitive ELISA kit (8-OHdG Check; Japan Institute for the Control of Aging, Fukuroi, Japan).

Statistical analysis

Values are expressed as means \pm SEM. Analysis of variance (ANOVA) followed by Tukey-Kramer test was used to assess differences among groups. Differences were considered significant at $p < 0.05$.

Results

Effects of EPA and DHA on hepatic lipid accumulation and liver injury in AHF diet-fed mice

The AHF diet is a useful dietary model for NASH with progression from NAFLD [18,37]. To investigate the effect of EPA and DHA on AHF diet-induced NAFLD, C57BL/6J mice were fed a normal chow, AHF diet, or AHF diet supplemented with EPA or DHA for four weeks. Table 1 compares body weight, tissue weight, and plasma metabolic parameters in C57BL/6J mice fed these diets. The mice in the four dietary groups showed similar body weights. Feeding C57BL/6J mice the AHF diet for four weeks slightly increased the liver/body weight ratio compared with the chow-fed C57BL/6J mice. This ratio was significantly increased in AHF + EPA group compared to the other groups. The AHF diet elevated total cholesterol levels and decreased plasma TG levels. Hypercholesterolemia was attenuated in both AHF + EPA and AHF + DHA groups. The plasma FFA level of the AHF + EPA group was the lowest among the four groups. There was no significant intergroup difference in plasma glucose and insulin levels.

Images of the opened abdominal cavities of mice showed that, unlike that of the chow diet group, the liver of the AHF diet group had a white tinge and was enlarged (Fig 1A). However, these changes in hepatic abnormalities induced by the AHF diet were efficiently attenuated by

Table 1. Phenotypic comparison of C57BL/6J mice fed the chow, AHF, AHF + EPA, and AHF + DHA diet for 4 weeks.

Parameters	Chow	AHF	AHF+EPA	AHF+DHA
Body weight (g)	27.5 ± 0.52	25.3 ± 0.57	25.9 ± 0.51	26.2 ± 0.40
Liver weight (%body weight)	4.77 ± 0.11	5.14 ± 0.12	5.39 ± 0.21*	4.97 ± 0.07
eWAT weight (%body weight)	1.41 ± 0.08	1.09 ± 0.09	1.15 ± 0.08 ^{##}	1.38 ± 0.06
Glucose (mg/dl)	164 ± 9.4	169 ± 9.0	152 ± 6.7	149 ± 5.8
Insulin (ng/ml)	0.72 ± 0.21	0.31 ± 0.07	0.52 ± 0.18	0.61 ± 0.23
Plasma T-Cho (mg/dl)	79.3 ± 2.9	143.5 ± 7.0 **	114.1 ± 5.5 **, ##	124.7 ± 5.4 **, ##
Plasma TG (mg/dl)	85.7 ± 5.8	54.6 ± 5.3 **	56.0 ± 4.5 **	64.0 ± 5.1 **
Plasma FFA (mM)	0.55 ± 0.06	0.48 ± 0.03	0.38 ± 0.03 *	0.45 ± 0.02

Values are mean ± SEM. n = 12–15 per group. eWAT, epididymal white adipose tissue; T-Cho, total cholesterol; TG, triglyceride; FFA, free fatty acid; AHF + EPA, atherogenic high-fat diet supplemented with EPA; AHF + DHA, atherogenic high-fat diet supplemented with DHA.

* $P < 0.05$ vs chow group

** $P < 0.01$ vs chow group

$P < 0.01$ vs AHF group.

doi:10.1371/journal.pone.0157580.t001

the addition of EPA or DHA to the AHF diet, as reflected in changes in liver appearance. Hepatic triacylglycerol (TG) levels in the AHF group were markedly elevated (Fig 1B). The effects of EPA or DHA on liver TG accumulation differed. EPA prevented AHF diet-induced increase in liver TG, but DHA did not significantly prevent the AHF diet-induced increase. Hepatic total cholesterol (T-Cho) levels were also markedly increased in the AHF group and hepatic cholesterol accumulation was equally decreased in both AHF + EPA and AHF + DHA groups (Fig 1B).

EPA and DHA prevent AHF diet-induced hepatic inflammatory features

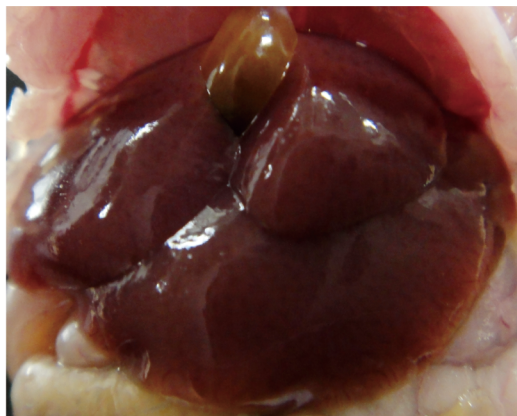
The histology of livers from the four groups is shown in Fig 2A. Inflammatory cell infiltration including macrophage and lymphocyte were observed in centrilobular area of the AHF compared with the chow diet group. The hepatic inflammation induced by the AHF diet was efficiently attenuated by the addition of EPA or DHA to the AHF diet, as reflected in significantly fewer hepatic lobular inflammatory clusters than in the AHF diet group. Slight to moderate centrilobular fatty change including microvesicular or large droplet were observed in the AHF or DHA compared the chow diet group, and very slight fatty change was observed in the EPA. In addition, EPA or DHA administration was found to improve liver injury as assessed by serum transaminase activities (Fig 2B). Feeding mice with the AHF diet resulted in approximately 4- and 3-fold increases in levels of plasma ALT and AST, respectively. These biochemical liver injury markers induced by AHF diet were similarly reduced by dietary EPA and DHA.

Effects of AHF diet supplemented with EPA or DHA on hepatic fatty acid composition

In hepatic FA composition analysis, the livers of the AHF group showed increased amounts of palmitoleic acid (C16:1 n-7) and oleic acid (C18:1 n-9) but significantly reduced amounts of palmitic acid (C16:0), stearic acid (C18:0), linoleic acid (C18:2 n-6), dihomo-gamma-linolenic acid (C20:3 n-6), arachidonic acid (C20:4 n-6), EPA (C20:5 n-3), docosapentaenoic acid (C22:5 n-3), and DHA (C22:6 n-3) in comparison with the chow group (Fig 3A). The amount of hepatic EPA of AHF + EPA group was increased 3.9- and 29-fold in comparison with the chow and AHF groups, respectively. Dietary DHA also clearly increased hepatic DHA content

A

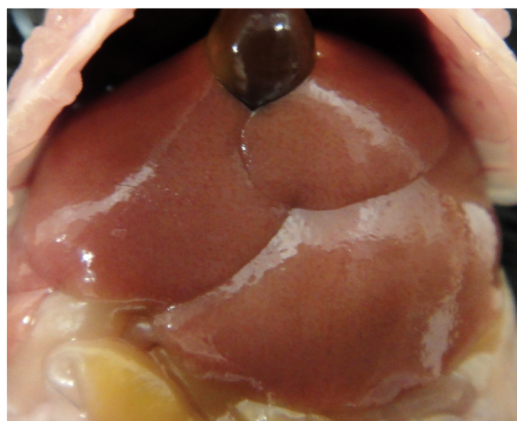
Chow



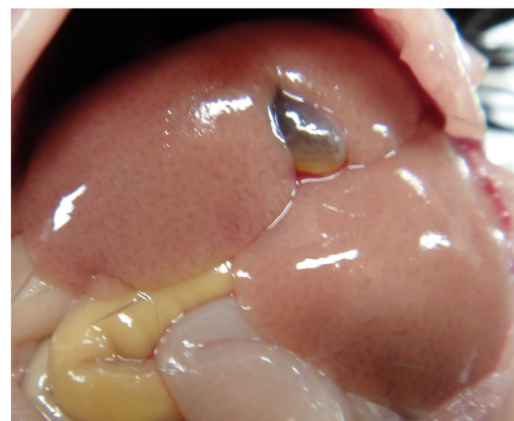
AHF



AHF+EPA



AHF+DHA



B

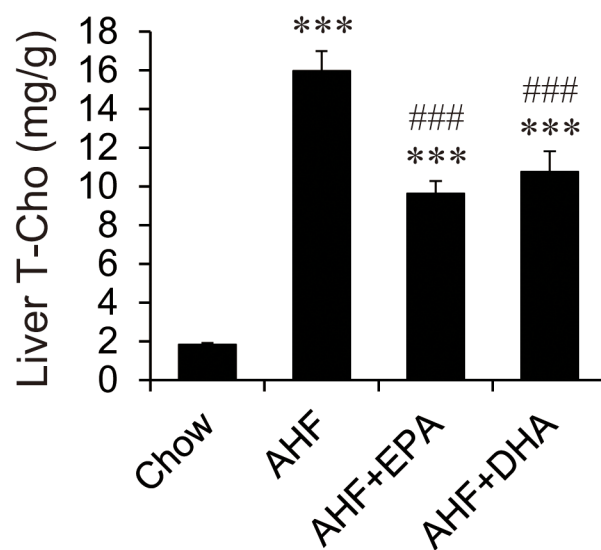
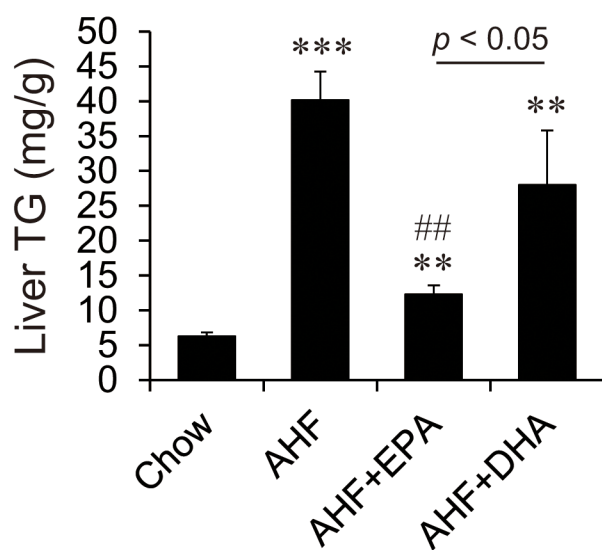


Fig 1. Effect of EPA and DHA on hepatic lipid content in mice fed AHF diet. Liver macroscopic picture (A) and hepatic triglyceride (TG) and total cholesterol (T-Cho) levels (B) in mice fed a normal chow, an AHF diet, or an AHF diet supplemented with EPA or DHA for four weeks. $n = 12\text{--}15$ per group. ** $p < 0.01$, *** $p < 0.001$ versus chow group; ## $p < 0.01$, ### $p < 0.001$ versus AHF group.

doi:10.1371/journal.pone.0157580.g001

by 1.8- and 7.4-fold compared with the control and AHF groups, respectively. The addition of EPA or DHA to the AHF diet similarly reduced hepatic palmitic acid, palmitoleic acid, and oleic acid. The hepatic levels of the n-6 series of PUFA [arachidonic acid (C20:4 n-6) and its precursor, dihomo-gamma-linolenic acid (C20:3 n-6)] were strongly decreased in both AHF + EPA and AHF + DHA groups in comparison with the AHF group. Mice fed AHF + DHA showed increased hepatic EPA, and mice fed AHF + EPA showed increased hepatic docosapentaenoic acid (DPA) and DHA content compared with the AHF group to the similar extent. The proportion of hepatic n-6/n-3 FA was significantly increased in AHF group as compared with chow group (Fig 3B). The hepatic n-6/n-3 FA ratio was strongly decreased in the AHF + EPA and AHF + DHA groups in comparison with the AHF group. This ratio for the AHF + EPA group was slightly but significantly lower than that of AHF + DHA group.

Effects of AHF diet supplemented with EPA or DHA on hepatic mRNA and protein levels involved in fatty acid and cholesterol metabolism

To explore the molecular mechanisms underlying the different effects of the EPA and DHA on AHF diet-induced NAFLD, mRNA and protein levels of candidate genes in livers from the chow, AHF, AHF + EPA, and AHF + DHA groups were measured by quantitative real-time polymerase chain reaction (qPCR) and Western blotting.

Gene expressions relevant to hepatic synthesis of FAs and TGs (lipogenesis) were measured. Fatty acid synthase (FAS), ELOVL family member 6 (Elovl6), and stearoyl-CoA desaturase-1 (SCD1) play major roles in *de novo* synthesis of FA. In FA synthesis, SREBP-1c and its target SCD-1 mRNA expression levels were significantly increased in the AHF group compared to the chow group (Fig 4A). In contrast, FAS and Elovl6 mRNA levels did not differ in the AHF group compared to the chow group. Addition of EPA or DHA to the AHF diet markedly reduced the levels of SREBP-1c mRNA expression (Fig 4A), mature SREBP-1 protein (Fig 4B), and FA synthesis gene expression in comparison with both chow and AHF diet groups. In TG synthesis, mRNA expression of glycerol-3-phosphate acyltransferase (GPAT)-1 in the AHF group were lower than that in the chow group (Fig 4A). Compared to the AHF + DHA group, the AHF + EPA group showed significantly decreased FAS, Elovl6, and GPAT-1 expression, suggesting that EPA was more effective than DHA in suppressing hepatic FAs and TGs synthesis.

Impairment of FA oxidation contributes to hepatosteatosis. We measured the mRNA abundance of peroxisome proliferator-activated receptor- α (PPAR α) and its target genes, including carnitine palmitoyltransferase (CPT)-1a, acyl-CoA oxidase (AOX), and cytochrome P450, family 4, subfamily a, polypeptide 10 (Cyp4a10) (Fig 4C). PPAR α and CPT-1a mRNA expression levels were not significantly increased in the AHF group compared to the chow group (Fig 4C). n-3 PUFA supplementation is thought to trigger PPAR α activation [38,39]. However, the addition of EPA or DHA to the AHF diet did not change the expression of PPAR α and CPT-1a. Meanwhile, the expression levels of PPAR α -target genes involved in peroxisomal and microsomal FA oxidation such as AOX and Cyp4a10 were significantly decreased in the AHF group compared to the chow group, but the addition of EPA or DHA to the AHF diet recovered the expression of these genes.

Enzymes involved in PUFA synthesis include delta-6 desaturase (D6D), delta-5 desaturase (D5D), Elovl2, and Elovl5. These enzymes are responsible for the conversion of C18:2 n-6 and C18:3 n-3 to C20–22 n-6 and n-3 PUFAs, respectively [40,41]. The hepatic expression of D6D

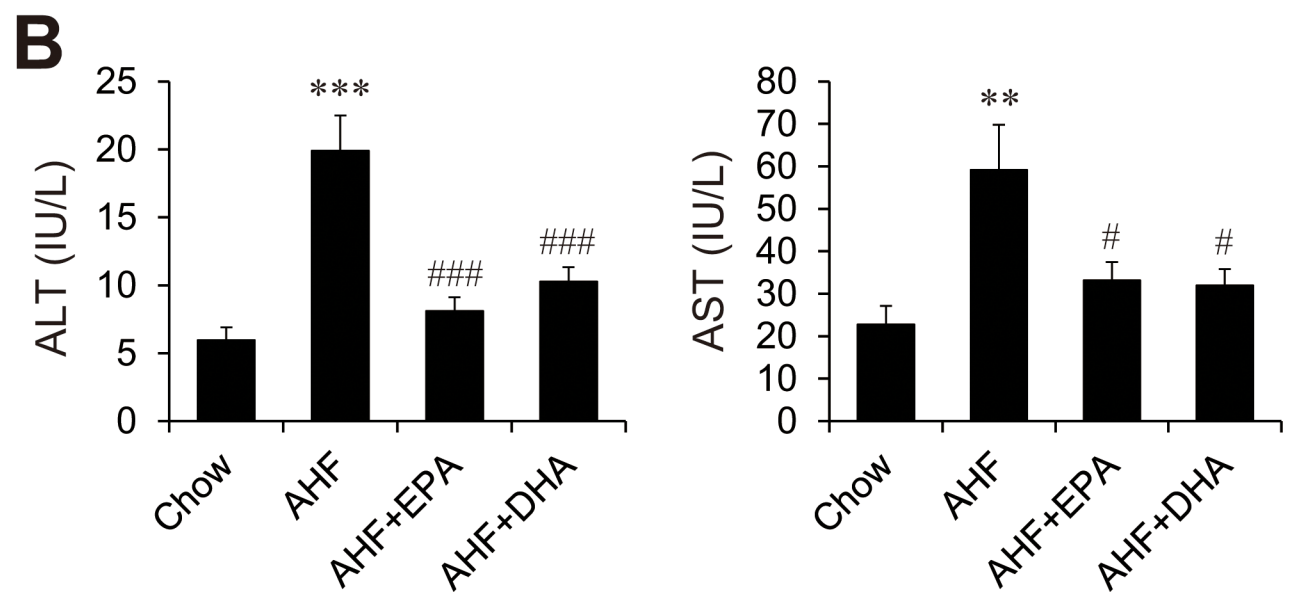
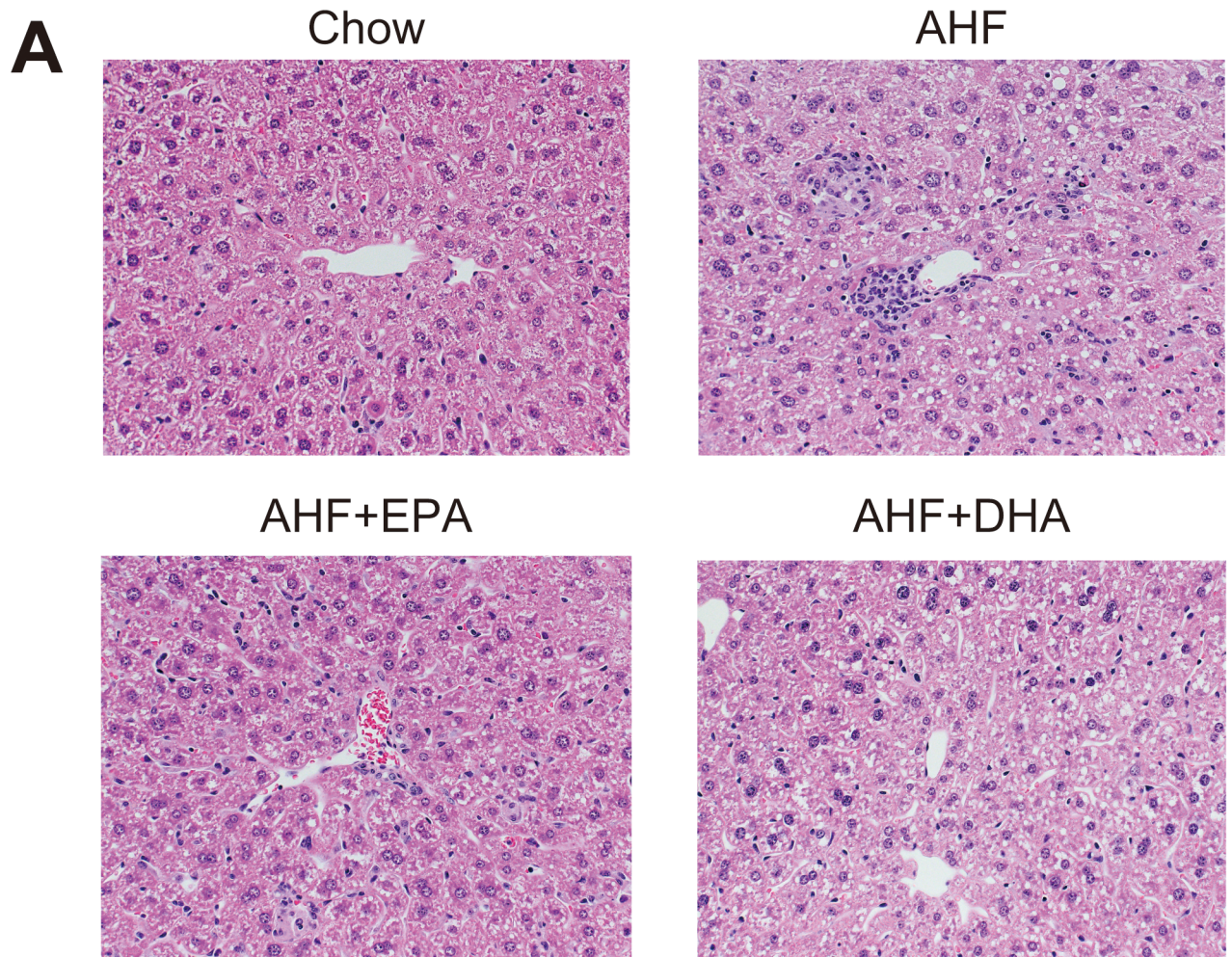


Fig 2. Attenuated hepatic inflammation and liver injury in mice fed AHF supplemented with EPA or DHA. Hematoxylin and eosin (H&E) staining of liver sections from representative mice from each treatment group (A), and plasma alanine aminotransferase (ALT) and aspartate aminotransferase (AST) levels (B). $n = 11\text{--}15$ per group. ** $p < 0.01$, *** $p < 0.001$ versus chow group; # $p < 0.05$, ### $p < 0.001$ versus AHF group.

doi:10.1371/journal.pone.0157580.g002

was significantly increased in the AHF group compared to the chow group (Fig 4D). In contrast, D5D, Elovl5, and Elovl2 mRNA levels did not differ in the AHF group compared to the chow group. The mRNA levels of these genes were similarly suppressed in livers of the AHF + EPA and AHF + DHA groups compared to those of the chow and AHF groups.

In lipid storage, cell-death-inducing DFFA-like effector C (Cidec) mRNA expression levels were significantly increased in the AHF group compared to the chow group (Fig 4E). Compared to the AHF group, the AHF + EPA group showed significantly decreased PPAR γ 2 and Cidec expression, whereas the AHF + DHA group did not suppress the expression of these genes, suggesting that EPA was more effective than DHA in suppressing hepatic lipid storage.

Because hepatic cholesterol content was significantly increased in AHF diet-fed mice and was moderately decreased in the AHF + EPA and AHF + DHA groups (Fig 1B), we investigated the pathways controlling hepatic cholesterol content (Fig 4F). In cholesterol synthesis and uptake, the mRNA abundances of SREBP-2 and its target, low-density lipoprotein receptor (LDLR) and 3-hydroxy-3-methylglutaryl-CoA (HMG-CoA Red) were significantly decreased in both AHF + EPA and AHF + DHA groups compared with the chow and AHF diet groups. Of the lipoprotein metabolism examined, the expression of ATP-binding cassette (ABC) transporters A1 (ABCA1), ABCG5, and ABCG8 were increased in AHF, AHF + EPA, and AHF + DHA diet groups compared with the control group (Fig 4F). However, no difference between EPA and DHA administration was observed.

Effects of AHF diet supplemented with EPA or DHA on the development of hepatic inflammation

Hepatic damage involves increased hepatic inflammation and cell death. We analyzed the effects of EPA or DHA supplementation on the AHD diet-induced hepatic inflammation (Fig 5A). Immunohistochemical staining of liver sections for F4/80, a marker for Kupffer cells, revealed that Kupffer cell accumulation and hypertrophied macrophages were markedly greater in the AHF group compared to the chow group, whereas these cells were decreased in livers of the AHF + EPA and AHF + DHA groups compared to those of the AHF groups. In agreement with this observation, the expressions of CD68, tumor necrosis factor alpha (TNF α) and monocyte chemoattractant protein 1 (MCP-1), early markers of inflammation, were strongly upregulated after AHF diet feeding (Fig 5B). The AHF + DHA but not the AHF + EPA diet significantly attenuated the induction of TNF α and MCP-1 expression relative to the AHF group. To test whether the changes observed above for mRNA translated into changes of the corresponding proteins, we performed western blotting of liver lysates (Fig 5C). AHF diet-fed mice showed significantly increased c-Jun N-terminal kinase (JNK) phosphorylation than chow-fed mice. The AHF + EPA and AHF + DHA groups showed significantly decreased the AHF diet-induced JNK activation. These observations suggest that EPA and DHA ameliorate AHF diet-induced hepatic inflammation, which was slightly prominent with DHA.

Effects of AHF diet supplemented with EPA or DHA on the hepatic oxidative stress

We next analyzed the effects of EPA or DHA supplementation on the AHD diet-induced hepatic oxidative stress (Fig 6A). Immunohistochemical staining of liver sections for hexanoyl-

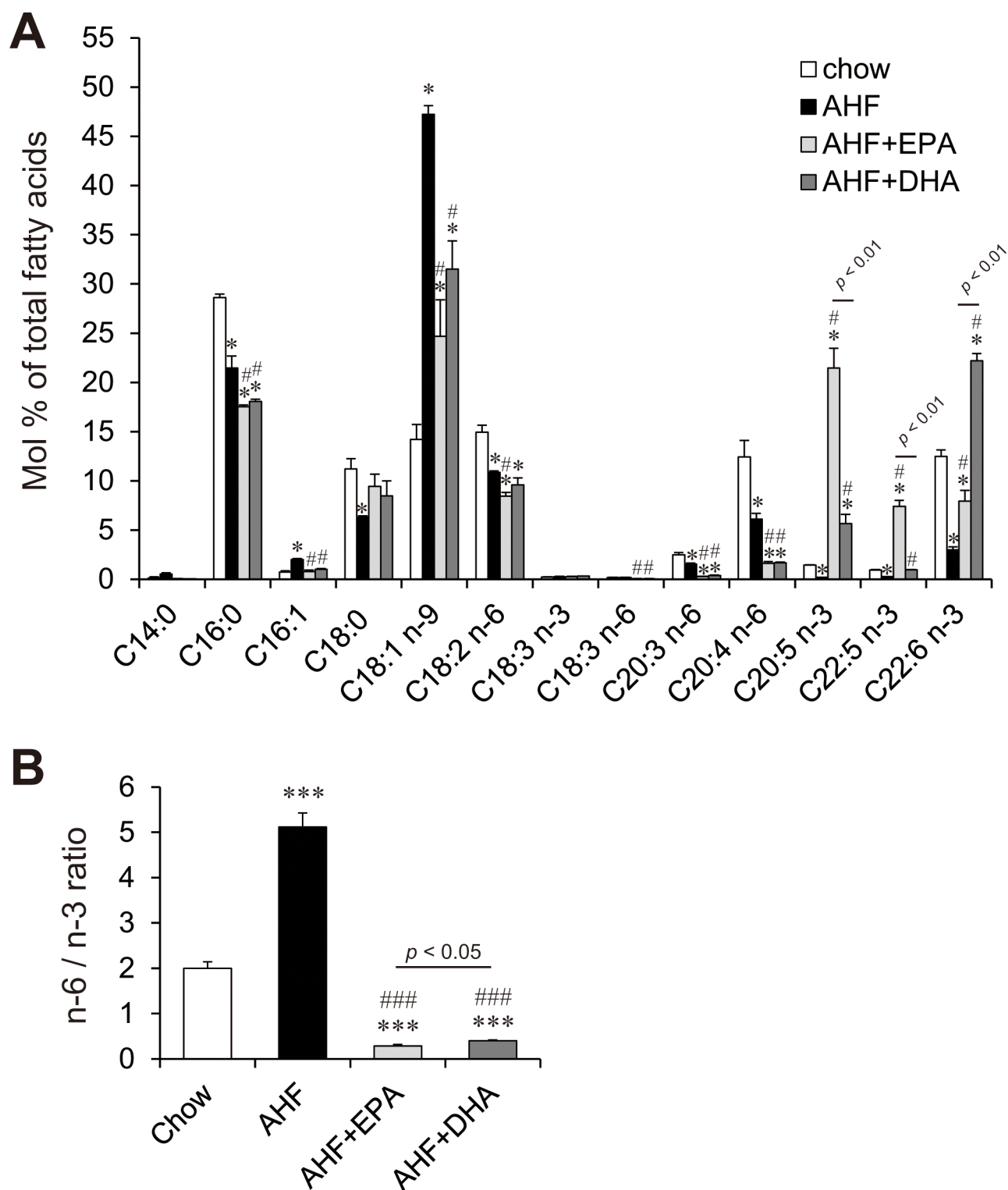


Fig 3. Hepatic fatty acid composition in mice fed normal chow, AHF, AHF + EPA and AHF + DHA diets for four weeks. Hepatic fatty acid composition (A) and the n-6/n-3 fatty acid ratio (B) in livers of mice fed a normal chow, an AHF diet, or an AHF diet supplemented with EPA or DHA for four weeks. n = 3–4 per group. * p < 0.05, *** p < 0.001 versus chow group; # p < 0.05, ### p < 0.001 versus AHF group.

doi:10.1371/journal.pone.0157580.g003

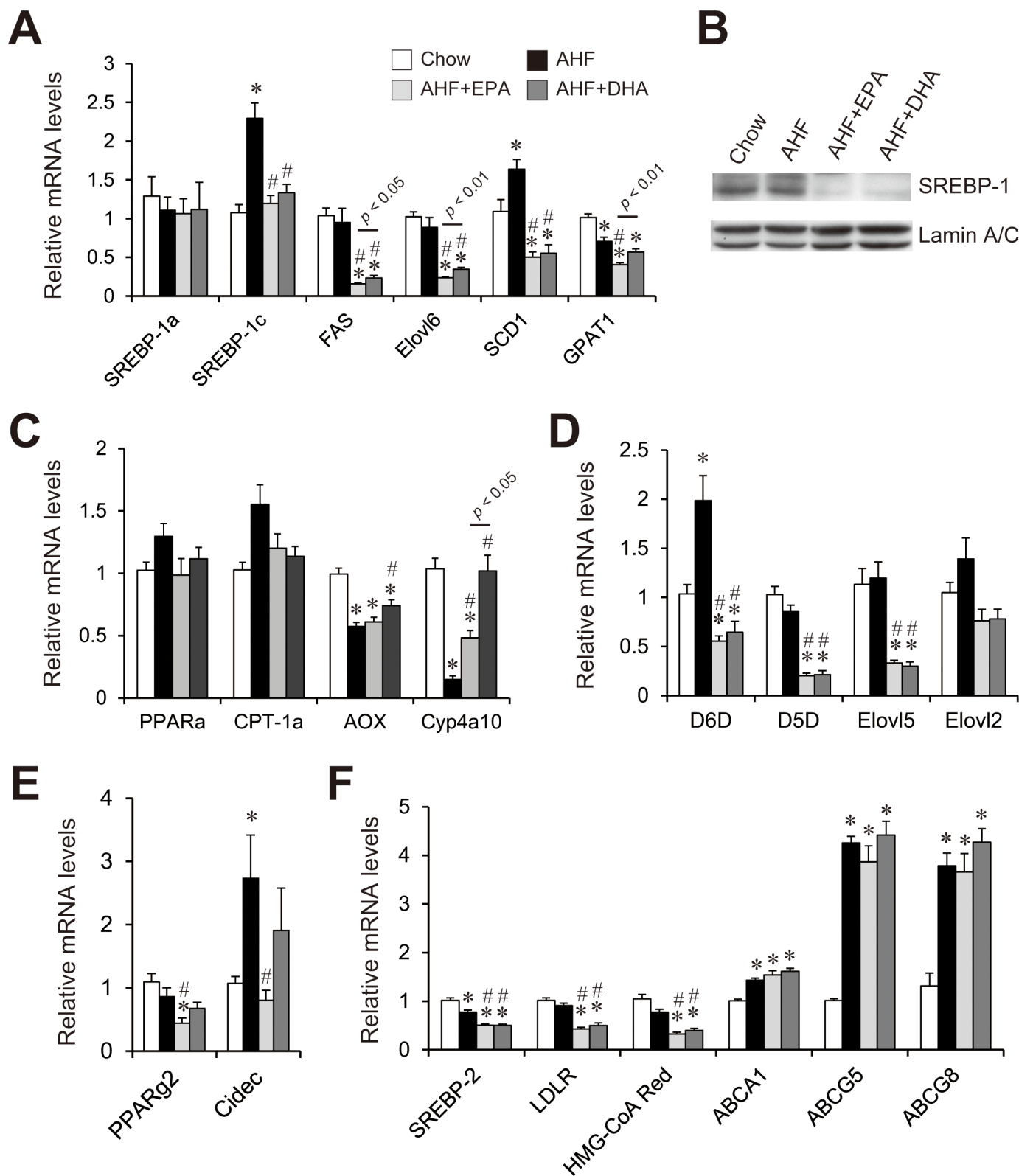


Fig 4. Effect of AHF diet supplemented with EPA or DHA on hepatic lipid metabolism-related mRNA and protein levels. For gene expression and immunoblot analyses, livers were collected from the mice fed a normal chow, an AHF diet, or an AHF diet supplemented with EPA or DHA for four weeks. Quantitative real-time PCR of genes involved in fatty acid and TG synthesis (A), fatty acid oxidation (C), PUFA synthesis (D), lipid storage (E), cholesterol and lipoprotein metabolism (F). Immunoblot analysis for mature SREBP-1 levels (B). $n = 13-15$ per group. * $p < 0.05$ versus chow group; # $p < 0.05$ versus AHF group.

doi:10.1371/journal.pone.0157580.g004

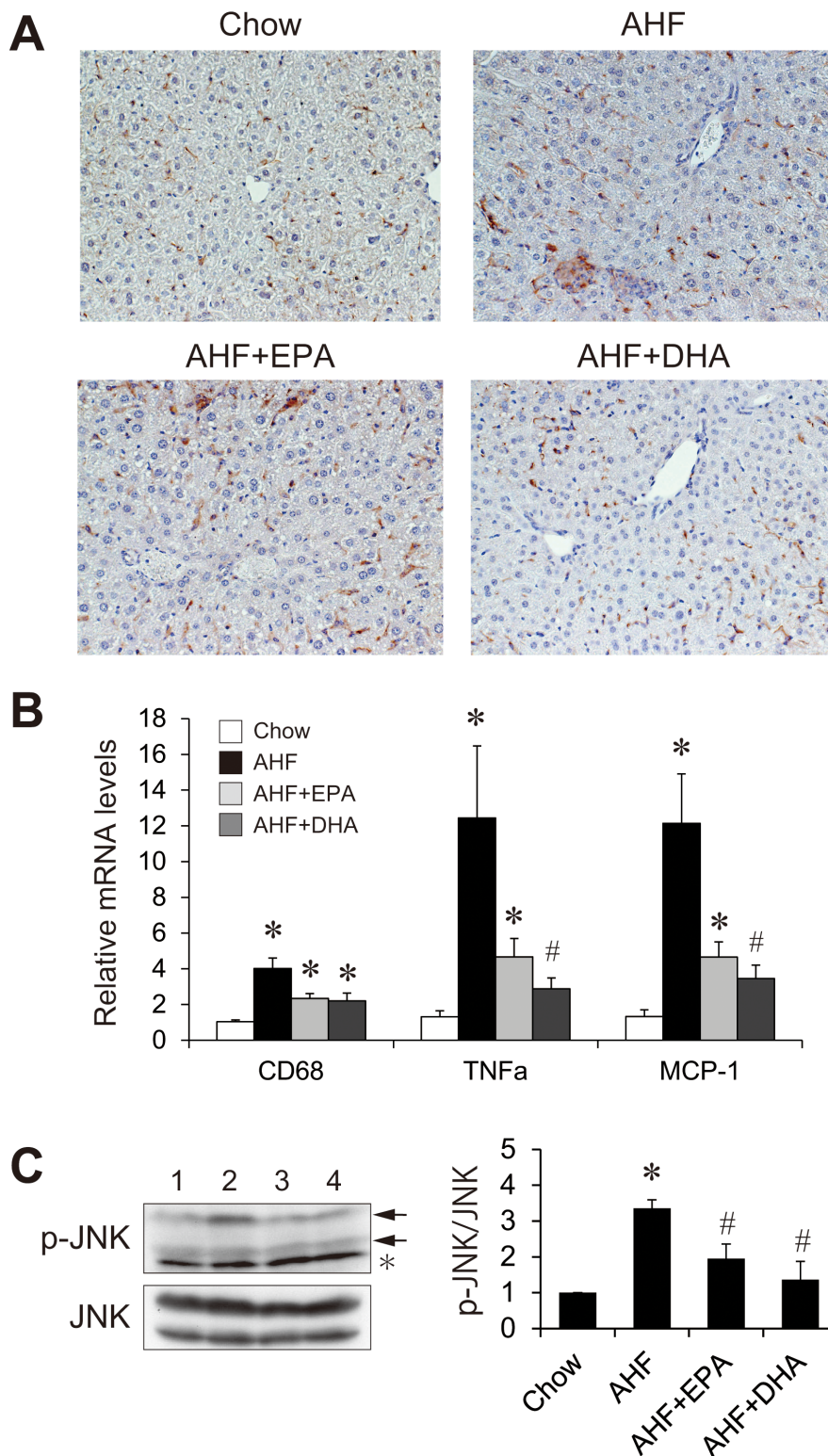


Fig 5. Effect of AHF diet supplemented with EPA or DHA on hepatic inflammation. Representative immunohistochemical staining for F4/80 in liver section from mice fed a normal chow, an AHF diet, or an AHF diet supplemented with EPA or DHA for four weeks (A). Quantitative real-time PCR of genes involved in inflammation in the livers of mice fed a normal chow, an AHF diet, or an AHF diet supplemented with EPA or DHA for four weeks (B). Immunoblot analysis of phosphorylated JNK and total JNK levels and the ratio between phosphorylated and total JNK by densitometry analysis (C). $n = 13-15$ per group. * $p < 0.05$ versus chow group; # $p < 0.05$ versus AHF group.

doi:10.1371/journal.pone.0157580.g005

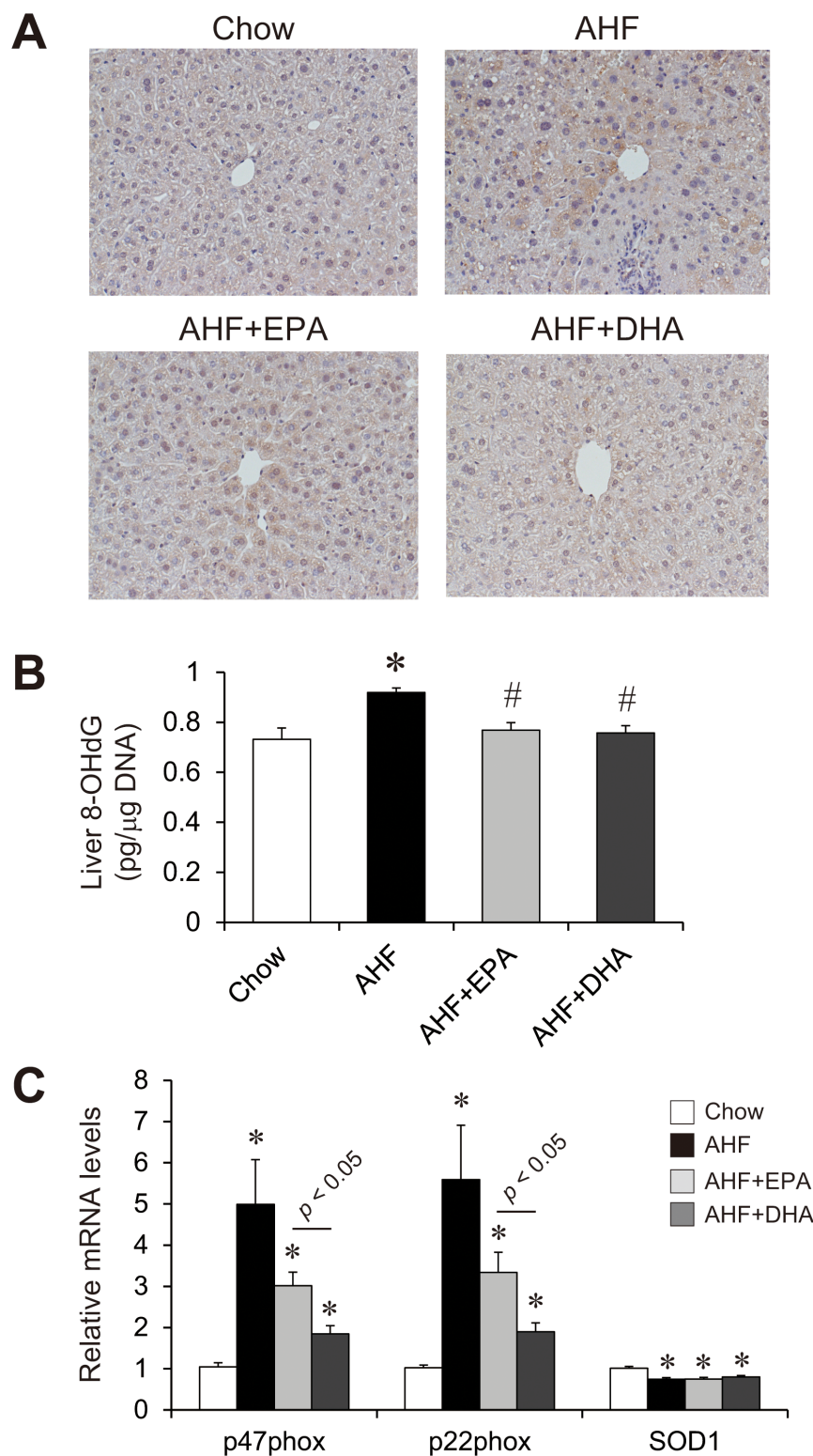


Fig 6. Effect of AHF diet supplemented with EPA or DHA on hepatic oxidative stress. Representative immunohistochemical staining for Nε-(Hexanoyl) Lysine in liver section from mice fed a normal chow, an AHF diet, or an AHF diet supplemented with EPA or DHA for four weeks (A). Liver 8-OHdG levels in mice fed a normal chow, an AHF diet, or an AHF diet supplemented with EPA or DHA for four weeks (B). Quantitative real-time PCR of genes involved in oxidative stress in the livers of mice fed a normal chow, an AHF diet, or an

AHF diet supplemented with EPA or DHA for four weeks (B). $n = 13-15$ per group. * $p < 0.05$ versus chow group; # $p < 0.05$ versus AHF group.

doi:10.1371/journal.pone.0157580.g006

lysine (HEL), a marker for early stage of lipid oxidation, revealed that intensity of the HEL-positive hepatocytes was enhanced in the AHF group compared the chow diet group. The AHF + EPA and AHF + DHA groups showed decreased the intensity of the staining, with the effect on DHA group stronger. Consistent with histology stained with HEL-positive cells, hepatic 8-hydroxy-2'-deoxyguanosine (8-OHdG) levels were significantly reduced in the AHF + EPA and AHF + DHA groups compared with the AHF group (Fig 6B). Moreover, the expression of p47phox and p22phox, genes associated with reactive oxygen species (ROS) production, was also

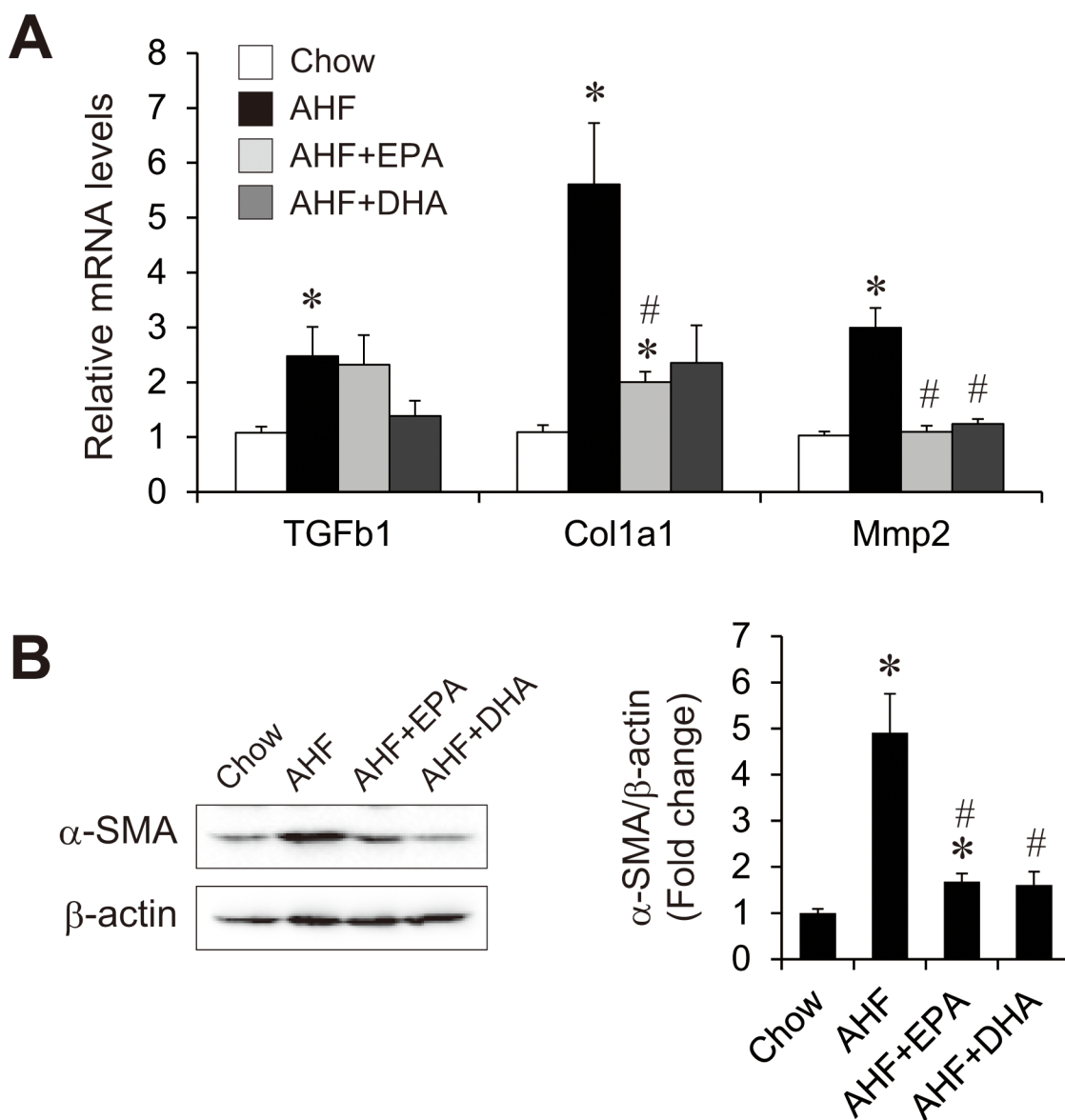


Fig 7. Effect of AHF diet supplemented with EPA or DHA on hepatic fibrogenesis. Quantitative real-time PCR of genes involved in fibrogenesis in the livers of mice fed a normal chow, an AHF diet, or an AHF diet supplemented with EPA or DHA for four weeks (A). Immunoblot analysis of α -SMA levels and the ratio between α -SMA and β -actin by densitometry analysis (B). $n = 13-15$ per group. * $p < 0.05$ versus chow group; # $p < 0.05$ versus AHF group.

doi:10.1371/journal.pone.0157580.g007

dramatically up-regulated in the AHF group (Fig 6C). The induction of p47phox and p22phox was attenuated in the AHF + DHA group but not in the AHF + EPA group. The expression of superoxide dismutase 1 (SOD1), a gene associated with reactive oxygen species (ROS) elimination, was slightly decreased in the AHF group, and addition of EPA or DHA to the AHF diet did not change the expression of SOD1. These observations suggest that EPA and DHA ameliorate AHF diet-induced hepatic oxidative stress, which was more prominent with DHA.

Effects of AHF diet supplemented with EPA or DHA on the AHF diet-induced hepatic fibrogenesis

We further investigated the expression profile of hepatic fibrogenic factors that may be implicated in the pathophysiology of NASH. The expression levels of genes associated with fibrosis, such as transforming growth factor beta 1 (TGF β 1), collagen type1a (Col1a1), and matrix metalloproteinase 2 (Mmp2) were markedly increased in the AHF group (Fig 7A). Compared with the AHF group, AHF + EPA group showed significantly decreased Col1a1 and Mmp2 expression but unchanged TGF β 1 expression. The AHF + DHA group showed significantly decreased Mmp2 expression with a tendency to decreased expression of both Col1a1 and TGF β 1 compared with the AHF group. Decreased fibrogenesis by EPA or DHA supplementation was further examined by measuring alpha-smooth muscle actin (α -SMA) levels by western blotting (Fig 7B). AHF diet-fed mice showed significantly increased hepatic α -SMA protein levels than chow-fed mice. The AHF + EPA and AHF + DHA groups showed significantly decreased α -SMA protein levels compared with the AHF group to a similar extent after loading correction. Fibrosis was also confirmed by Sirius Red staining (S1 Fig). Sirius Red positive fibrosis was slightly observed in centrilobular area and inflammatory foci in the AHF group compared the chow diet group. Tend to decrease of the fibrosis were noted in both EPA and DHA groups compared the AHF group. These results indicate that despite of difference in inflammation and ROS production, both EPA and DHA are similarly effective of suppression of fibrogenic markers and prevention of early fibrosis.

Discussion

This study aimed to determine whether purified EPA and DHA have different effects on AHF diet-induced NAFLD development in mice. We found that both EPA- and DHA-containing diet significantly reduced AHF diet-induced steatohepatitis. EPA was more effective than DHA for the improvement of AHF diet-induced hepatic TG accumulation. In contrast, DHA was more effective than EPA for the suppression of AHF diet-induced hepatic inflammation and ROS generation.

According to the two-hit theory, hepatic steatosis of any etiology could be the first “hit.” Growing evidence suggests that n-3 PUFAs can regulate hepatocyte lipid accumulation [25,42]. Treatment of mice with n-3 PUFAs suppressed liver steatosis and inhibited hepatic FA synthesis [24,25,43]. In our study, EPA, but not DHA, significantly suppressed AHF diet-induced hepatic TG accumulation. The lipid content of hepatocytes is regulated by the integrated activities of cellular enzymes that catalyze lipid synthesis, uptake, storage, export, and oxidation. As shown in Fig 4, both EPA and DHA equally reduced mature SREBP-1 protein and lipogenic gene expression. However, EPA was more effective than DHA in the reduction of the mRNA expression of FAS, Elovl6, and GPAT1. Recent functional evidence has indicated that Cidec is localized in lipid droplets and plays a key role in the formation of steatosis [44,45]. AHF-induced induction of Cidec expression was significantly suppressed in the AHF + EPA but not the AHF + DHA group. Expression levels of genes involved in β oxidation and PUFA synthesis were similar between the EPA and DHA groups, suggesting that the difference

in hepatic TG accumulation between EPA and DHA was not due to the difference in the capacity for hepatic FA oxidation. These findings indicate that the strong hepatic TG-lowering effect of EPA was due to the suppression of lipogenesis and lipid droplet formation. Our findings are consistent with those of a recent study showing that EPA exerts anti-obesity effect in HF/HS-induced obesity mice by suppressing hepatic lipogenesis and steatosis [43].

It has been proposed that hepatic FA composition is an important determinant of NASH progression [18,19,46,47]. EPA and DHA suppressed the AHF diet-induced accumulation of hepatic palmitoleic acid and oleic acid and strongly reduced hepatic arachidonic acid content. AHF or western diet-induced steatohepatitis mice models show markedly elevated hepatic oleic acid content [18,32,37]. Arachidonic acid-derived prostaglandins and related lipid metabolites are active mediators of inflammation [48–50], and EPA and DHA have antagonistic effects on arachidonic acid metabolism [51]. Compared to the chow group, the AHF group showed a significantly increased n-6/n-3 fatty acid ratio. In contrast, both EPA and DHA showed dramatically decreased ratios. These results suggest that both EPA and DHA strongly attenuate AHF diet-induced liver injury by suppressing n-6 PUFA synthesis and metabolism.

Multiple possible sources, such as inflammation and oxidative stress, in the fatty liver may constitute the second “hit” for cellular injury, apoptosis, and fibrosis in NASH [4,15,52]. In our study, hepatic histology and gene expression analysis showed that EPA and DHA attenuated AHF diet-induced hepatic inflammation, oxidative stress, and fibrosis. In no case was DHA less effective than EPA in suppressing hepatic inflammation and oxidative stress. In a recent study, DHA was more effective than EPA in attenuating inflammation, oxidative stress, fibrosis, and hepatic damage in LDLR-deficient mice fed a high-fat, high-cholesterol diet [32]. These results suggested that a reduction in hepatosteatosis is not required for DHA to attenuate AHF diet-induced hepatic damage, such as by inflammation, oxidative stress, and fibrosis. The molecular basis for this difference is currently enigma, it could be related to the molecule features of both lipids that EPA has a higher kinetics of plasma–tissue turnover whereas DHA has trend of retention in tissue [53,54]. In our current experimental setting, dietary administration of EPA or DHA caused considerable increases in hepatic content of the other counterpart in both cases, which might have obscured the potential more discriminative effects, although inter-conversion between EPA and DHA in plasma levels have been under clinical debate. Further studies on longer term are required to conclude the effects of EPA and DHA on liver fibrosis and cancer.

In conclusion, both EPA and DHA improve the pathological features of AHF-induced NASH pathologies. EPA is more effective than DHA in reducing hepatosteatosis. In contrast, DHA is more effective than EPA in attenuating hepatic inflammation and ROS generation. EPA and DHA ameliorate AHF diet-induced NAFLD and NASH pathology towards liver fibrosis by different mechanism in which TG-reducing effect make a large contribution to benefit of EPA and suppressive effect for inflammation or ROS generation make a large contribution to benefit of DHA. Clinical application to humans may select EPA and DHA to fit of the respective pathological conditions. Further studies may shed light on the relationship between the type of lipid accumulated in the liver and the effect of EPA and DHA on NAFLD.

Supporting Information

S1 Fig. Representative Sirius red staining in the liver sections from mice fed a normal chow, an AHF diet, or an AHF diet supplemented with EPA or DHA for four weeks. (PDF)

S1 Table. The Composition of the Atherogenic High-Fat (AHF) Diet. (PDF)

S2 Table. Fatty acid composition (mol% of total fatty acids) of the chow and AHF diet.
(PDF)

Acknowledgments

The authors thank Hiroyuki Kawano and Masanori Nakakuki for continuous support of the project; Katsuko Okubo, Yuko Tamai, and Chizuko Fukui for technical assistance; and members of our laboratories for discussion and helpful comments on the manuscript. The authors would like to thank Enago (www.enago.jp) for the English language review.

Author Contributions

Conceived and designed the experiments: TM H. Shimano. Performed the experiments: NSK TM MK HO. Analyzed the data: NSK TM MK HO SH YT MI KK HI SY H. Suzuki KM DN N. Yahagi YN H. Sone N. Yamada H. Shimano. Wrote the paper: NSK TM H. Shimano.

References

1. Lazo M, Clark JM. The epidemiology of nonalcoholic fatty liver disease: a global perspective. *Semin Liver Dis.* 2008; 28: 339–350. doi: [10.1055/s-0028-1091978](https://doi.org/10.1055/s-0028-1091978) PMID: [18956290](https://pubmed.ncbi.nlm.nih.gov/18956290/)
2. Argo CK, Caldwell SH. Epidemiology and natural history of non-alcoholic steatohepatitis. *Clin Liver Dis.* 2009; 13: 511–531. doi: [10.1016/j.cld.2009.07.005](https://doi.org/10.1016/j.cld.2009.07.005) PMID: [19818302](https://pubmed.ncbi.nlm.nih.gov/19818302/)
3. Everhart JE, Bambha KM. Fatty liver: think globally. *Hepatology.* 2010; 51: 1491–1493. doi: [10.1002/hep.23659](https://doi.org/10.1002/hep.23659) PMID: [20432252](https://pubmed.ncbi.nlm.nih.gov/20432252/)
4. Cohen JC, Horton JD, Hobbs HH. Human fatty liver disease: old questions and new insights. *Science.* 2011; 332: 1519–1523. doi: [10.1126/science.1204265](https://doi.org/10.1126/science.1204265) PMID: [21700865](https://pubmed.ncbi.nlm.nih.gov/21700865/)
5. Angulo P. Nonalcoholic fatty liver disease. *N Engl J Med.* 2002; 346: 1221–1231. PMID: [11961152](https://pubmed.ncbi.nlm.nih.gov/11961152/)
6. Farrell GC, Larter CZ. Nonalcoholic fatty liver disease: from steatosis to cirrhosis. *Hepatology.* 2006; 43: S99–S112. PMID: [16447287](https://pubmed.ncbi.nlm.nih.gov/16447287/)
7. Marchesini G, Brizi M, Bianchi G, Tomassetti S, Bugianesi E, Lenzi M, et al. Nonalcoholic fatty liver disease: a feature of the metabolic syndrome. *Diabetes.* 2001; 50: 1844–1850. PMID: [11473047](https://pubmed.ncbi.nlm.nih.gov/11473047/)
8. Targher G, Bertolini L, Poli F, Rodella S, Scala L, Tessari R, et al. Nonalcoholic fatty liver disease and risk of future cardiovascular events among type 2 diabetic patients. *Diabetes.* 2005; 54: 3541–3546. PMID: [16306373](https://pubmed.ncbi.nlm.nih.gov/16306373/)
9. Loria P, Marchesini G, Nascimbeni F, Ballestri S, Maurantonio M, Carubbi F, et al. Cardiovascular risk, lipidemic phenotype and steatosis. A comparative analysis of cirrhotic and non-cirrhotic liver disease due to varying etiology. *Atherosclerosis.* 2014; 232: 99–109. doi: [10.1016/j.atherosclerosis.2013.10.030](https://doi.org/10.1016/j.atherosclerosis.2013.10.030) PMID: [24401223](https://pubmed.ncbi.nlm.nih.gov/24401223/)
10. Day CP, James OF. Steatohepatitis: a tale of two “hits”? *Gastroenterology.* 1998; 114: 842–845. PMID: [9547102](https://pubmed.ncbi.nlm.nih.gov/9547102/)
11. Li Z, Yang S, Lin H, Huang J, Watkins PA, Moser AB, et al. Probiotics and antibodies to TNF inhibit inflammatory activity and improve nonalcoholic fatty liver disease. *Hepatology.* 2003; 37: 343–350. PMID: [12540784](https://pubmed.ncbi.nlm.nih.gov/12540784/)
12. Lee AH, Scapa EF, Cohen DE, Glimcher LH. Regulation of hepatic lipogenesis by the transcription factor XBP1. *Science.* 2008; 320: 1492–1496. doi: [10.1126/science.1158042](https://doi.org/10.1126/science.1158042) PMID: [18556558](https://pubmed.ncbi.nlm.nih.gov/18556558/)
13. Obstfeld AE, Sogaru E, Thearle M, Francisco AM, Gayet C, Ginsberg HN, et al. C-C chemokine receptor 2 (CCR2) regulates the hepatic recruitment of myeloid cells that promote obesity-induced hepatic steatosis. *Diabetes.* 2010; 59: 916–925. doi: [10.2337/db09-1403](https://doi.org/10.2337/db09-1403) PMID: [20103702](https://pubmed.ncbi.nlm.nih.gov/20103702/)
14. Neuschwander-Tetri BA. Hepatic lipotoxicity and the pathogenesis of nonalcoholic steatohepatitis: the central role of nontriglyceride fatty acid metabolites. *Hepatology.* 2010; 52: 774–788. doi: [10.1002/hep.23719](https://doi.org/10.1002/hep.23719) PMID: [20683968](https://pubmed.ncbi.nlm.nih.gov/20683968/)
15. Tilg H, Moschen AR. Evolution of inflammation in nonalcoholic fatty liver disease: the multiple parallel hits hypothesis. *Hepatology.* 2010; 52: 1836–1846. doi: [10.1002/hep.24001](https://doi.org/10.1002/hep.24001) PMID: [21038418](https://pubmed.ncbi.nlm.nih.gov/21038418/)
16. Buzzetti E, Pinzani M, Tsochatzis EA. The multiple-hit pathogenesis of non-alcoholic fatty liver disease (NAFLD). *Metabolism.* 2016.

17. Zámbo V, Simon-Szabó L, Szelényi P, Kereszturi E, Bánhegyi G, Csala M. Lipotoxicity in the liver. *World J Hepatol.* 2013; 5: 550–557. doi: [10.4254/wjh.v5.i10.550](https://doi.org/10.4254/wjh.v5.i10.550) PMID: [24179614](https://pubmed.ncbi.nlm.nih.gov/24179614/)
18. Matsuzaka T, Atsumi A, Matsumori R, Nie T, Shinozaki H, Suzuki-Kemuriyama N, et al. Elov6 promotes nonalcoholic steatohepatitis. *Hepatology.* 2012; 56: 2199–2208. doi: [10.1002/hep.25932](https://doi.org/10.1002/hep.25932) PMID: [22753171](https://pubmed.ncbi.nlm.nih.gov/22753171/)
19. Kuba M, Matsuzaka T, Matsumori R, Saito R, Kaga N, Taka H, et al. Absence of Elov6 attenuates steatohepatitis but promotes gallstone formation in a lithogenic diet-fed Ldlr(-/-) mouse model. *Sci Rep.* 2015; 5: 17604. doi: [10.1038/srep17604](https://doi.org/10.1038/srep17604) PMID: [26619823](https://pubmed.ncbi.nlm.nih.gov/26619823/)
20. Calder PC. n-3 polyunsaturated fatty acids, inflammation, and inflammatory diseases. *Am J Clin Nutr.* 2006; 83: 1505s–1519s. PMID: [16841861](https://pubmed.ncbi.nlm.nih.gov/16841861/)
21. De Caterina R. n-3 fatty acids in cardiovascular disease. *N Engl J Med.* 2011; 364: 2439–2450. doi: [10.1056/NEJMr1008153](https://doi.org/10.1056/NEJMr1008153) PMID: [21696310](https://pubmed.ncbi.nlm.nih.gov/21696310/)
22. Shearer GC, Savinova OV, Harris WS. Fish oil—how does it reduce plasma triglycerides? *Biochim Biophys Acta.* 2012; 1821: 843–851. doi: [10.1016/j.bbalip.2011.10.011](https://doi.org/10.1016/j.bbalip.2011.10.011) PMID: [22041134](https://pubmed.ncbi.nlm.nih.gov/22041134/)
23. Nogueira MA, Oliveira CP, Ferreira Alves VA, Stefano JT, Rodrigues LS, Torrinhas RS, et al. Omega-3 polyunsaturated fatty acids in treating non-alcoholic steatohepatitis: A randomized, double-blind, placebo-controlled trial. *Clin Nutr.* 2015.
24. Yahagi N, Shimano H, Hasty AH, Amemiya-Kudo M, Okazaki H, Tamura Y, et al. A crucial role of sterol regulatory element-binding protein-1 in the regulation of lipogenic gene expression by polyunsaturated fatty acids. *J Biol Chem.* 1999; 274: 35840–35844. PMID: [10585468](https://pubmed.ncbi.nlm.nih.gov/10585468/)
25. Sekiya M, Yahagi N, Matsuzaka T, Najima Y, Nakakuki M, Nagai R, et al. Polyunsaturated fatty acids ameliorate hepatic steatosis in obese mice by SREBP-1 suppression. *Hepatology.* 2003; 38: 1529–1539. PMID: [14647064](https://pubmed.ncbi.nlm.nih.gov/14647064/)
26. Takeuchi Y, Yahagi N, Izumida Y, Nishi M, Kubota M, Teraoka Y, et al. Polyunsaturated fatty acids selectively suppress sterol regulatory element-binding protein-1 through proteolytic processing and autoloop regulatory circuit. *J Biol Chem.* 2010; 285: 11681–11691. doi: [10.1074/jbc.M109.096107](https://doi.org/10.1074/jbc.M109.096107) PMID: [20145241](https://pubmed.ncbi.nlm.nih.gov/20145241/)
27. Scorletti E, Bhatia L, McCormick KG, Clough GF, Nash K, Hodson L, et al. Effects of purified eicosapentaenoic and docosahexaenoic acids in nonalcoholic fatty liver disease: results from the Welcome* study. *Hepatology.* 2014; 60:1211–21. PMID: [25043514](https://pubmed.ncbi.nlm.nih.gov/25043514/)
28. Sanyal AJ, Abdelmalek MF, Suzuki A, Cummings OW, Chojkier M; EPE-A Study Group. No significant effects of ethyl-eicosapentaenoic acid on histologic features of nonalcoholic steatohepatitis in a phase 2 trial. *Gastroenterology.* 2014; 147(2):377–84.e1 doi: [10.1053/j.gastro.2014.04.046](https://doi.org/10.1053/j.gastro.2014.04.046) PMID: [24818764](https://pubmed.ncbi.nlm.nih.gov/24818764/)
29. Scorletti E, Byrne CD. Omega-3 fatty acids, hepatic lipid metabolism, and nonalcoholic fatty liver disease. *Annu Rev Nutr.* 2013; 33: 231–248. doi: [10.1146/annurev-nutr-071812-161230](https://doi.org/10.1146/annurev-nutr-071812-161230) PMID: [23862644](https://pubmed.ncbi.nlm.nih.gov/23862644/)
30. Jump DB, Depner CM, Tripathy S, Lytle KA. Impact of dietary fat on the development of non-alcoholic fatty liver disease in Ldlr(-/-) mice. *Proc Nutr Soc.* 2016; 75: 1–9. PMID: [26282529](https://pubmed.ncbi.nlm.nih.gov/26282529/)
31. Delarue J, Lalles JP. Nonalcoholic fatty liver disease: Roles of the gut and the liver and metabolic modulation by some dietary factors and especially long-chain n-3 PUFA. *Mol Nutr Food Res.* 2016; 60: 147–159. doi: [10.1002/mnfr.201500346](https://doi.org/10.1002/mnfr.201500346) PMID: [26300318](https://pubmed.ncbi.nlm.nih.gov/26300318/)
32. Depner CM, Philbrick KA, Jump DB. Docosahexaenoic acid attenuates hepatic inflammation, oxidative stress, and fibrosis without decreasing hepatosteatosis in a Ldlr(-/-) mouse model of western diet-induced nonalcoholic steatohepatitis. *J Nutr.* 2013; 143: 315–323. doi: [10.3945/jn.112.171322](https://doi.org/10.3945/jn.112.171322) PMID: [23303872](https://pubmed.ncbi.nlm.nih.gov/23303872/)
33. Watanabe S, Tsuneyama K. Eicosapentaenoic acid attenuates hepatic accumulation of cholesterol esters but aggravates liver injury and inflammation in mice fed a cholate-supplemented high-fat diet. *J Toxicol Sci.* 2013; 38: 379–390. PMID: [23665937](https://pubmed.ncbi.nlm.nih.gov/23665937/)
34. Matsuzaka T, Shimano H, Yahagi N, Kato T, Atsumi A, Yamamoto T, et al. Crucial role of a long-chain fatty acid elongase, Elov6, in obesity-induced insulin resistance. *Nat Med.* 2007; 13: 1193–1202. PMID: [17906635](https://pubmed.ncbi.nlm.nih.gov/17906635/)
35. Ishikado A, Morino K, Nishio Y, Nakagawa F, Mukose A, Sono Y, et al. 4-Hydroxy hexenal derived from docosahexaenoic acid protects endothelial cells via Nrf2 activation. *PLoS One.* 2013; 8: e69415. doi: [10.1371/journal.pone.0069415](https://doi.org/10.1371/journal.pone.0069415) PMID: [23936010](https://pubmed.ncbi.nlm.nih.gov/23936010/)
36. Wang Y, Botolin D, Xu J, Christian B, Mitchell E, Jayaprakasam B, et al. Regulation of hepatic fatty acid elongase and desaturase expression in diabetes and obesity. *J Lipid Res.* 2006; 47: 2028–2041. PMID: [16790840](https://pubmed.ncbi.nlm.nih.gov/16790840/)
37. Matsuzawa N, Takamura T, Kurita S, Misu H, Ota T, Ando H, et al. Lipid-induced oxidative stress causes steatohepatitis in mice fed an atherogenic diet. *Hepatology.* 2007; 46: 1392–1403. PMID: [17929294](https://pubmed.ncbi.nlm.nih.gov/17929294/)

38. Pawar A, Jump DB. Unsaturated fatty acid regulation of peroxisome proliferator-activated receptor alpha activity in rat primary hepatocytes. *J Biol Chem*. 2003; 278: 35931–35939. PMID: [12853447](#)
39. Jump DB. N-3 polyunsaturated fatty acid regulation of hepatic gene transcription. *Curr Opin Lipidol*. 2008; 19: 242–247. doi: [10.1097/MOL.0b013e3282ffaf6a](#) PMID: [18460914](#)
40. Guillou H, Zadravec D, Martin PG, Jacobsson A. The key roles of elongases and desaturases in mammalian fatty acid metabolism: Insights from transgenic mice. *Prog Lipid Res*. 2010; 49: 186–199. doi: [10.1016/j.plipres.2009.12.002](#) PMID: [20018209](#)
41. Zhang JY, Kothapalli KS, Brenna JT. Desaturase and elongase-limiting endogenous long-chain polyunsaturated fatty acid biosynthesis. *Curr Opin Clin Nutr Metab Care*. 2016; 19: 103–110. doi: [10.1097/MCO.0000000000000254](#) PMID: [26828581](#)
42. Levy JR, Clore JN, Stevens W. Dietary n-3 polyunsaturated fatty acids decrease hepatic triglycerides in Fischer 344 rats. *Hepatology*. 2004; 39: 608–616. PMID: [14999679](#)
43. Sato A, Kawano H, Notsu T, Ohta M, Nakakuki M, Mizuguchi K, et al. Antiobesity effect of eicosapentaenoic acid in high-fat/high-sucrose diet-induced obesity: importance of hepatic lipogenesis. *Diabetes*. 2010; 59: 2495–2504. doi: [10.2337/db09-1554](#) PMID: [20682690](#)
44. Puri V, Konda S, Ranjit S, Aouadi M, Chawla A, Chakladar A, et al. Fat-specific protein 27, a novel lipid droplet protein that enhances triglyceride storage. *J Biol Chem*. 2007; 282: 34213–34218. PMID: [17884815](#)
45. Keller P, Petrie JT, De Rose P, Gerin I, Wright WS, Chiang SH, et al. Fat-specific protein 27 regulates storage of triacylglycerol. *J Biol Chem*. 2008; 283: 14355–14365. doi: [10.1074/jbc.M708323200](#) PMID: [18334488](#)
46. Puri P, Baillie RA, Wiest MM, Mirshahi F, Choudhury J, Cheung O, et al. A lipidomic analysis of nonalcoholic fatty liver disease. *Hepatology*. 2007; 46: 1081–1090. PMID: [17654743](#)
47. Yamada K, Mizukoshi E, Sunagozaka H, Arai K, Yamashita T, Takeshita Y, et al. Characteristics of hepatic fatty acid compositions in patients with nonalcoholic steatohepatitis. *Liver Int*. 2015; 35: 582–590. doi: [10.1111/liv.12685](#) PMID: [25219574](#)
48. Kuehl FA Jr., Egan RW. Prostaglandins, arachidonic acid, and inflammation. *Science*. 1980; 210: 978–984. PMID: [6254151](#)
49. Samuelsson B. Leukotrienes: mediators of immediate hypersensitivity reactions and inflammation. *Science*. 1983; 220: 568–575. PMID: [6301011](#)
50. Malmsten CL. Prostaglandins, thromboxanes, and leukotrienes in inflammation. *Am J Med*. 1986; 80: 11–17.
51. Schmitz G, Ecker J. The opposing effects of n-3 and n-6 fatty acids. *Prog Lipid Res*. 2008; 47: 147–155. doi: [10.1016/j.plipres.2007.12.004](#) PMID: [18198131](#)
52. Browning JD, Horton JD. Molecular mediators of hepatic steatosis and liver injury. *J Clin Invest*. 2004; 114: 147–152. PMID: [15254578](#)
53. Arterburn LM, Hall EB, Oken H. Distribution, interconversion, and dose response of n-3 fatty acids in humans. *Am J Clin Nutr*. 2006; 83: 1467S–1476S. PMID: [16841856](#)
54. Anderson BM, Ma DW. Are all n-3 polyunsaturated fatty acids created equal? *Lipids Health Dis*. 2009; 8: 33. doi: [10.1186/1476-511X-8-33](#) PMID: [19664246](#)