

筑波大学農林技術センター八ヶ岳・川上演習林 およびその周辺地域所産銹菌目録*

佐藤 昭二**・柿 嵩 真**・勝屋 敬三***・小野 義隆***

八ヶ岳・川上演習林およびその周辺地域での植物寄生菌類の調査・研究は、同演習林創設以来、東京教育大学名誉教授平塚直秀先生らにより開始され今日に至っている^{1,2,3,4,5)}。また、毎年、植物寄生菌学実験の一環として、同演習林を利用して学生の実習を行っている。これらの調査・研究や実習で採集された植物寄生菌類の標本は筑波大学農林学系菌類標本庫に保管されているが、著者らはその標本にもとづいて銹菌の目録を作成した。その結果 21 属 113 種の分布が明らかになったが、以下はその目録である。なお、銹菌の学名については主に HIRATSUKA⁶⁾に従ったが、*Coleosporium* 属菌については KANEKO⁷⁾に従った^{8,9)}。

八ヶ岳・川上演習林での調査・研究および実習を行うにあたりいろいろ御便宜をはかっていたいただいた海上道雄助教授、黒田吉雄助手はじめ同演習林の方々に厚くお礼申し上げる。銹菌の寄主植物の同定については農林学系中村 徹助手から御教示をいただいた。ここに深謝する。また、本目録のとりまとめにあたって大変お世話になった農林学系松田祥江技官、植物寄生菌類の調査・採集に御協力いただいた東京教育大学農学部植物病理学及菌学研究室および本学農林学系植物病理学及菌学研究グループの学生諸氏に感謝の意を表する。

* Contribution No. 35, Laboratories of Plant Pathology and Mycology, Institute of Agriculture and Forestry, University of Tsukuba.

** 筑波大学農林学系, *** 茨城大学教育学部

Fam. Melampsoraceae

Uredinopsis hirosakiensis Kamei et Hiratsuka, f.

II, III.* ヒメシダ [*Thelypteris palustris* Schott var. *pubescens* Fernald] に寄生 (Sept. 7, 1967, TS-R3707, 3708).

Uredinopsis komagatakensis Hiratsuka, f.

II, III. ヘビノネコサ [*Athyrium yokoscense* H. Christ] に寄生 (July 26, 1980, TS-R3284).

Hyalopsora polypodii (Diet.) Magnus (図-1)

II, III. イヌワラビ [*Athyrium niponicum* Hance.] に寄生 (July 27, 1979, TS-R3129).

Melampsoridium alni (Thümen) Dietel

II, III. ヤシヤブシ [*Alnus firma* Sieb. et Zucc.] に寄生 (Sept. 6, 1967, TS-R2734 ; Sept. 10, 1976, TS-R2733).

Melampsoridium betulinum (Desm.) Klebahn

II, III. ダケカンバ [*Betula ermanii* Cham. var. *communis* Koidz.] に寄生 (Oct. 23, 1972, TS-R2811 ; Sept. 3, 1975, TS-R2208-2210, 3574 ; July 27, 1982, TS-R3377).

II, III. シラカンバ [*Betula tauschii* Koidz.] に寄生 (Oct. 8, 1968, TS-R2536, 2537 ; July 27, 1982, TS-R3378).

Melampsoridium hiratsukanum S. Ito ex Hiratsuka, f.

II, III. ヤマハンノキ [*Alnus tinctoria* Sarg. var. *obtusiloba* Call.] に寄生 (Sept. 6, 1967, TS-R3413 ; Sept. 7, 1967, TS-R3554 ; July 27, 1982, TS-R2735, 2736, 3368, 3396-3399).

Pucciniastrum agrimoniae (Diet.) Tranzschel (図-2)

II, III. キンミズヒキ [*Agrimonia pilosa* Ledeb. var. *japonica* Nakai] に寄生 (Sept. 6, 1967, TS-R2427, 3474, 3475 ; Sept. 7, 1967, TS-R3569 ; Oct. 8, 1968, TS-R2428 ; Sept. 16, 1969, TS-R2640 ; Sept. 8, 1971, TS-R2637, 2638 ; Aug. 29, 1972, TS-R2639 ; Sept. 3, 1975, TS-R

* 胞子世代 O : 精子世代, I : 銹胞子世代, II : 夏胞子世代, III : 冬胞子世代

2001-2006 ; Sept. 4, 1975, TS-R2007-2012 ; Sept. 9, 1976, TS-R2015, 2016 ; Sept. 10, 1976, TS-R2013, 2014).

Pucciniastrum epilobii Otth

II, III. アカバナ属植物 [*Epilobium* sp.] に寄生 (Sept. 7, 1967, TS-R3774, 3775).

Pucciniastrum potentillae Komarov

II, III. ミツバツチグリ [*Potentilla freyniana* Borum.] に寄生 (Sept. 7, 1967, TS-R3525, 3526 ; Oct. 8, 1968, TS-R2864, 3439-3441 ; Aug. 29, 1972, TS-R2641 ; July 30, 1981, TS-R3046 ; July 27, 1982, TS-R2741).

Melampsora epiphylla Dietel

II, III. オノエヤナギ (ナガバヤナギ) [*Salix sachalinensis* Fr. Schm.] に寄生 (July 25, 1978, TS-R3177, 3178 ; July 27, 1979, TS-R3698, 3130 ; July 26, 1980, TS-R3376 ; July 11, 1981, TS-R3349, 3350 ; July 30, 1981, TS-R3327, 3328 ; Sept. 25, 1981, TS-R3356, 3357 ; July 27, 1982, TS-R3362).

Melampsora humilis Dietel

II, III. イヌコリヤナギ [*Salix integra* Thunb.] に寄生 (Oct. 8, 1968, TS-R2475, 2476 ; Sept. 28, 1972, TS-R2550-2552 ; Sept. 3, 1975, TS-R3589-3594, 3771 ; Sept. 4, 1975, TS-R2453, 2454 ; July 24, 1978, TS-R3180 ; July 25, 1980, TS-R3300 ; July 26, 1980, TS-R3307 ; July 30, 1980, TS-R3332 ; July 11, 1981, TS-R3351 ; July 29, 1981, TS-R3040 ; July 30, 1981, TS-R3041, 3331 ; Sept. 25, 1981, TS-R3358 ; July 27, 1982, TS-R3363, 3364).

Melampsora kusanoi Dietel

0, I, II, III. トモエソウ [*Hypericum ascyron* L.] に寄生 (Aug. 30, 1972, TS-R2553, 2554 ; Oct. 23, 1972, TS-R2425 ; July 22, 1974, TS-R3625-3630 ; Sept. 3, 1975, TS-R3576, 3770 ; July 27, 1979, TS-R3151-3153 ; July 11, 1981, TS-R3352, 3353 ; July 30, 1981, TS-R3047, 3326 ; July 27, 1982, TS-R3359).

Melampsora larici-capraearum Klebahn (図-3, 4)

II, III. バッコヤナギ (ヤマネコヤナギ) [*Salix bakko* Kimura] に寄生 (Sept. 6, 1967, TS-R2215, 2513, 2514, 3472, 3473 ; Sept. 7, 1967, TS-R3530 ; Oct. 8, 1968, TS-R2533, 3442 ; July 4, 1972, TS-R2555-2559 ; July 5, 1972, TS-R2560, 2561 ; Aug. 7, 1972, TS-R2562, 2563, 2893,

2899, 2900 ; Sept. 3, 1975, TS-R2216-2224, 3575 ; July 24, 1978, TS-R3131, 3179 ; July 26, 1979, TS-R3132 ; July 27, 1979, TS-R3133, 3134, 3687, 3699 ; July 26, 1980, TS-R3245, 3246, 3261 ; July 11, 1981, 3346-3348 ; July 29, 1981, TS-R3042 ; July 30, 1981, TS-R3043, 3329, 3330, 3716 ; Sept. 25, 1981, TS-R3355 ; July 26, 1982, TS-R2763-2767, 3360, 3361, 3745).

Melampsora larici-populina Klebahn

II, III. ポプラ (セイヨウハコヤナギ) [*Populus nigra* L. var. *italica* Du Roi] に寄生 (Sept. 5, 1967, TS-R3494-3496 ; Sept. 6, 1967, TS-R2211, 2212 ; Oct. 8, 1968, TS-R2213, 2214, 2477-2480).

Melampsora laricis Hartig

II, III. ヤマナラシ (ハコヤナギ) [*Populus sieboldii* Miq.] に寄生 (Oct. 8, 1968, TS-R3446 ; Aug. 30, 1972, TS-R2564 ; July 25, 1978, TS-R3154, 3176 ; July 27, 1979, TS-R3135 ; July 26, 1980, TS-R3243, 3244, 3260, 3306 ; July 12, 1981, TS-R3354 ; July 30, 1981, TS-R3333, 3334, 3721 ; July 26, 1982, TS-R3749 ; July 27, 1982, TS-R2759-2762, 3366, 3367, 3763 ; July 28, 1982, TS-R3365).

Phakopsora ampelopsidis Dietel et P. Sydow (図-5)

II, III. ヤマブドウ [*Vitis amurensis* Rupr. var. *coignetii* Nakai] に寄生 (Sept. 6, 1967, TS-R3452 ; Oct. 8, 1968, TS-R2204-2206, 2803-2806 ; Sept. 3, 1975, TS-R2207 ; Sept. 10, 1976, TS-R3296).

II, III. ノブドウ [*Ampelopsis heterophylla* Sieb. et Zucc. var. *hancei* Planch.] に寄生 (Aug. 29, 1972, TS-R2982).

Phakopsora artemisiae Hiratsuka, f.

II, III. ヨモギ [*Artemisia dubia* Wall.] に寄生 (Sept. 3, 1975, TS-R2199-2203).

Cronartium quercuum Miyabe ex Shirai (図-6)

II, III. ミズナラ [*Quercus crispula* Bl.] に寄生 (Sept. 6, 1967, TS-R2457, 3549-3551 ; Aug. 29, 1972, TS-R2841 ; Sept. 4, 1975, TS-R2225-2227 ; Sept. 10, 1976, TS-R3205 ; July 24, 1978, TS-R3124 ; July 26, 1980, TS-R3272, 3273).

II, III. カシワ [*Quercus dentata* Thunb.] に寄生 (Oct. 8, 1968, TS-R2854, 2855 ; Sept. 4, 1975, TS-R2228).

Chrysomyxa rhododendri De Bary

II, III. ヤマツツジ [*Rhododendron kaempferi* Planch.] に寄生 (July 27, 1982, TS-R2678-2680, 3753, 3754).

Pucciniostele clarkiana (Barcl.) Dietel

I, III. アカショウマ [*Astilbe thunbergii* Miq.] に寄生 (Sept. 7, 1967, TS-R3519-3522 ; July 4, 1972, TS-R2331-2333 ; July 5, 1972, TS-R2328-2330, 2335 ; Aug. 29, 1972, TS-R2334 ; July 25, 1978, TS-R3147, 3188 ; Aug., 1978, TS-R3684, 3685 ; July 26, 1979, TS-R3149 ; July 27, 1979, TS-R3148, 3150 ; July 26, 1980, TS-R3308 ; July 30, 1981, TS-R3206, 3731-3733).

Pucciniostele mandshurica Dietel (図-7)

I, III. チダケサシ [*Astilbe microphylla* Knoll.] に寄生 (Sept. 6, 1967, TS-R2449, 2450 ; Sept. 7, 1967, TS-R3523, 3562, 3563 ; Oct. 8, 1968, TS-R2860 ; Sept. 8, 1971, TS-R2824 ; July 5, 1972, TS-R2324-2326, 2796, 2825, 2907-2912 ; Aug. 7, 1972, TS-R2327, 2897 ; July 22, 1974, TS-R2051-2055 ; Sept. 4, 1975, TS-R2460, 3671, 3672, 3769 ; Sept. 10, 1976, TS-R2056-2064, 2662, 3202, 3203 ; July 24, 1978, TS-R3143, 3187 ; July 26, 1979, TS-R3144-3146, 3678, 3679 ; July 6, 1980, TS-R3315, 3316 ; July 25, 1980, TS-R3247, 3248, 3259 ; July 29, 1981, TS-R3048, 3049 ; July 30, 1981, TS-R3050 ; July 26, 1982, TS-R2719-2724).

Coleosporium asterum (Diet.) P. et H. Sydow (図-8)

II, III. ノコンギク [*Aster ageratoides* Turcz. var. *ovatus* Kitamura (Franch. et Savat.) Nakai] に寄生 (Sept. 6, 1967, TS-R3465, 3466 ; Oct. 8, 1968, TS-R2285-2293 ; Aug. 29, 1972, TS-R2593 ; Aug. 30, 1972, TS-R2871, 2872 ; Sept. 28, 1972, TS-R2881, 2882, 2972, 2973 ; Sept. 30, 1972, TS-R2873-2877 ; Oct. 16, 1972, TS-R2976 ; Oct. 23, 1972, TS-R2878-2880, 2970 ; Sept. 3, 1975, TS-R2276-2278, 2294-2296).

II, III. ヤマシロギク (イナカギク) [*Aster ageratoides* Turcz. var. *semiamplexicaulis* (Makino) Ohwi] に寄生 (Sept. 6, 1967, TS-R2997-3000 ; Sept. 7, 1967, TS-R3565-3568 ; Oct. 8, 1968, TS-R2799-2801 ; Aug. 29, 1972, TS-R2835-2837, 2844, 2845, 2953-2959 ; Sept. 30, 1972, TS-R2960-2963 ; Oct. 16, 1972, TS-R2964, 2965 ; Oct. 23, 1972, TS-R2966-2969 ; Oct. 5, 1974, TS-R2774-2790 ; Sept. 3, 1975, TS-R3607-3614 ; Sept. 4, 1975, TS-R3648, 3649, 3652, 3653 ; July 27, 1979, TS-R3118, 3156, 3689, 3700 ; July 26, 1980, TS-R3274 ; July 30, 1981, TS-R3059).

II, III. ゴマナ [*Aster glehni* Fr. Schm. var. *hondoensis* Kitamura] に寄生 (Sept. 7,

1967, TS-R3528, 3529 ; Sept. 16, 1969, TS-R2584 ; July 4, 1972, TS-R2870 ; Aug. 29, 1972, TS-R2591, 2592, 2867-2869 ; Sept. 3, 1975, TS-R2281-2284 ; July 27, 1979, TS-R3119, 3120).

II, III. ユウガギク [*Kalimeris pinnatifida* (Maxim.) Kitamura] に寄生 (Sept. 6, 1967, TS-R2510-2512, 2524, 3476-3480 ; Sept. 7, 1967, TS-R3527 ; Oct. 7, 1968, TS-R2810 ; Oct. 8, 1968, TS-R2858 ; Aug. 7, 1972, TS-R2590, 2898 ; Aug. 29, 1972, TS-R2585-2587, 2795, 2840 ; Sept. 28, 1972, TS-R2588 ; Sept. 30, 1972, TS-R2589, 2850, 2851, 2971, 2975 ; Oct. 16, 1972, TS-R2579-2581 ; Sept. 3, 1975, TS-R2277, 3602-3604 ; Sept. 4, 1975, TS-R3656, 3657, 3669, 3670 ; Sept. 10, 1976, TS-R2279, 2280, 3189, 3190 ; July 24, 1978, TS-R3155 ; July 26, 1980, TS-R3283 ; July 30, 1981, TS-R3207).

***Coleosporium cimicifugatum* Thümen ex Komarov**

II, III. サラシナシヨウマ [*Cimicifuga simplex* Wormsk.] に寄生 (July 26, 1980, TS-R3303).

***Coleosporium clematidis* Barclay**

II, III. クサボタン [*Clematis stans* Sieb. et Zucc.] に寄生 (Sept. 6, 1967, TS-R2440-2445, 3462-3464 ; Oct. 8, 1968, TS-R2807-2809, 2856, 2857 ; Sept. 8, 1971, TS-R2617-2619 ; Aug. 7, 1972, TS-R2888-2890, 2901, 2902 ; Aug. 29, 1972, TS-R2614-2616, 2620 ; Sept. 3, 1975, TS-R2256-2266 ; Sept. 4, 1975, TS-R2643, 3646, 3647, 3650, 3651 ; Sept. 10, 1976, TS-R2267 ; Aug. 1978, TS-R3682, 3683).

***Coleosporium clematidis-apiifoliae* Dietel**

II, III. ボタンズル [*Clematis apiifolia* DC.] に寄生 (Sept. 6, 1967, TS-R3419-3423 ; Sept. 30, 1972, TS-R2610-2613 ; Oct. 16, 1972, TS-R2609 ; July 27, 1979, TS-R3117 ; July 25, 1980, TS-R3237).

***Coleosporium eupatorii* Hiratsuka, f. (図-9)**

0, I. ストローブマツ [*Pinus strobus* L.] に寄生 (July 6, 1967, TS-R3424, 3425, 3431-3433 ; July 30, 1981, TS-R3036).

II, III. ヒヨドリバナ [*Eupatorium chinense* L. var. *simplicifolium* (Makino) Kitamura] に寄生 (July 6, 1967, TS-R2737-2739, 3435 ; Aug. 29, 1972, TS-R2622, 2623 ; Oct. 23, 1972, TS-R2621 ; Sept. 3, 1975, TS-R3577-3581 ; July 26, 1980, TS-R3236, 3275).

II, III. ヨツバヒヨドリ [*Eupatorium chinense* L. var. *sachalinense* (Fr. Schm.) Kitamura] に寄生 (July 6, 1967, TS-R2740 ; Sept. 7, 1967, TS-R3555-3558 ; Oct. 8, 1968, TS-

-R2833, 2834 ; Aug. 29, 1972, TS-R2624, 2828-2830 ; Sept. 28, 1972, TS-R2832 ; Oct. 16, 1972, TS-R2831 ; Oct. 23, 1972, TS-R2827 ; Sept. 3, 1975, TS-R2249-2255 ; July 25, 1978, TS-R3113 ; July 26, 1980, TS-R3276 ; July 30, 1981, TS-R3034, 3035, 3729, 3730).

Coleosporium horianum Hennings

II, III. ツルニンジン [*Codonopsis lanceolata* (Sieb. et Zucc.) Trautv.] に寄生 (Sept. 6, 1967, TS-R3701 ; July 25, 1978, TS-R3157).

Coleosporium lycopi P. et H. Sydow

II, III. ソバナ [*Adenophora remotiflora* Miq.] に寄生 (July 26, 1980, TS-R3388).

II, III. ツリガネニンジン [*Adenophora triphylla* A. DC. var. *japonica* Hara] に寄生 (Sept. 5, 1967, TS-R3499-3501 ; Sept. 6, 1967, TS-R2509, 3457 ; Oct. 8, 1968, TS-R3437 ; Aug. 7, 1972, TS-R2605 ; Aug. 29, 1972, TS-R2607, 2608 ; Aug. 30, 1972, TS-R2812 ; Sept. 28, 1972, TS-R2606 ; Sept. 3, 1975, TS-R2268-2271 ; Sept. 9, 1976, TS-R2665 ; Sept. 10, 1976, TS-R2272-2275, 3195, 3196 ; July 25, 1978, TS-R3112 ; July 25, 1980, TS-R3230-3232 ; July 26, 1980, TS-R3309 ; July 12, 1981, TS-R3343, 3344 ; July 29, 1981, TS-R3030 ; July 30, 1981, TS-R3031 ; July 26, 1982, TS-R2714-2718).

Coleosporium neocacaliae Saho

II, III. ハンゴンソウ [*Senecio cannabifolius* Less.] に寄生 (July 6, 1967, TS-R2791, 2792 ; Sept. 7, 1967, TS-R3515-3518, 3559, 3560 ; Oct. 8, 1968, TS-R2229-2231, 2481, 2505-2508 ; Sept. 16, 1969, TS-R2633 ; Aug. 29, 1972, TS-R2632 ; Sept. 30, 1972, TS-R2630, 2631 ; Oct. 5, 1974, TS-R2134-2149 ; Sept. 10, 1976, TS-R2232 ; July 30, 1981, TS-R3057).

Coleosporium pedunculatum S. Kaneko

II, III. ミヤコアザミ [*Saussurea maximowiczii* Herd.] に寄生 (Sept. 6, 1967, TS-R2233).

Coleosporium phellodendri Komarov (図-10)

II, III. キハダ [*Phellodendron amurense* Rupr.] に寄生 (Sept. 7, 1967, TS-R3552, 3553 ; Aug. 29, 1972, TS-R2625, 2626 ; Sept. 3, 1975, TS-R2234-2242, 3595-3601, 3638-3640 ; Sept. 9, 1976, TS-R2663 ; Sept. 10, 1976, TS-R2243-2245 ; July 27, 1979, TS-R3115, 3116, 3688, 3709, 3710 ; July 26, 1980, TS-R3238 ; July 30, 1981, TS-R3032, 3033 ; July 27, 1982, TS-R2711-2713, 3370).

Coleosporium pini-asteris Orishimo (図-11)

II, III. シラヤマギク [*Aster scaber* Thunb.] に寄生 (Sept. 6, 1967, TS-R3460, 3461, 3470, 3471 ; Sept. 7, 1967, TS-R3536, 3537 ; Oct. 8, 1968, TS-R2846, 2847, 2859 ; Sept. 8, 1971, TS-R2601 ; July 5, 1972, TS-R2604 ; Aug. 7, 1972, TS-R2599, 2600, 2896 ; Aug. 29, 1972, TS-R2602, 2603 ; Aug. 30, 1972, TS-R2594, 2595 ; Sept. 28, 1972, TS-R2596-2598 ; Sept. 30, 1972, TS-R2582, 2583 ; July 22, 1974, TS-R2298 ; Sept. 3, 1975, TS-R2299-2304, 3615, 3616 ; Sept. 4, 1975, TS-R2297 ; Sept. 10, 1976, TS-R2305-2307, 3204 ; July 24, 1978, TS-R3174 ; July 25, 1978, TS-R3175 ; July 26, 1979, TS-R3121-3123 ; July 25, 1980, TS-R3234 ; July 26, 1980, TS-R3235 ; July 29, 1981, TS-R3037 ; July 30, 1981, TS-R3269).

Coleosporium plectranthi Barclay

II, III. ナギナタコウジュ [*Elsholtzia ciliata* (Thunb.) Hylander] に寄生 (Oct. 23, 1972, TS-R2865, 2866).

II, III. セキヤノアキチョウジ [*Plectranthus effusus* (Maxim.) Honda] に寄生 (Oct. 8, 1968, TS-R2530, 2531, 2838, 2839 ; Aug. 7, 1972, TS-R2895 ; Aug. 29, 1972, TS-R2949, 2950).

II, III. ヤマハッカ [*Plectranthus inflexus* (Thunb.) Vahl ex Benth.] に寄生 (Sept. 6, 1967, TS-R2525-2527 ; Sept. 8, 1967, TS-R2532 ; Oct. 8, 1968, TS-R2861 ; Aug. 7, 1972, TS-R2913).

II, III. ヒキオコシ [*Plectranthus japonicus* (Burm.) Koidz.] に寄生 (Sept. 4, 1975, TS-R3711-3714 ; Sept. 10, 1976, TS-R2664, 3194 ; July 24, 1978, TS-R3114).

II, III. カメバヒキオコシ [*Plectranthus kameba* (Okuyama) Ohwi] に寄生 (Sept. 30, 1972, TS-R2627, 2629 ; Sept. 3, 1975, TS-R2246-2248, 3584, 3585, 3605, 3606).

Coleosporium yamabense (Saho) Hiratsuka, f.

II, III. フキ [*Petasites japonicus* Miq.] に寄生 (July 26, 1980, TS-R3239 ; July 30, 1981, TS-R3028).

Fam. Pucciniaceae

Pileolaria shiraiana (Diet. et Syd.) S. Ito (図-12)

II, III. ヤマウルシ [*Rhus trichocarpa* Miq.] に寄生 (July 26, 1982, TS-R3743).

Xenodochus carbonarius Schlechtendal (図-13)

I, III. ワレモコウ [*Sanguisorba officinalis* L.] に寄生 (July, 1970, TS-R2821, 2822 ; Sept. 3, 1975, TS-R2050).

Phragmidium griseum Dietel (図-14, 15)

II, III. ニガイチゴ [*Rubus microphyllus* L. var. *incisus* Koidz.] に寄生 (Aug. 7, 1972, TS-R2891, 2892).

II, III. クマイチゴ [*Rubus wrightii* A. Gray] に寄生 (Sept. 6, 1967, TS-R3416-3418 ; Oct. 8, 1968, TS-R2535 ; Oct. 23, 1972, TS-R2424 ; July 27, 1979, TS-R3139 ; July 26, 1980, TS-R3242).

Phragmidium papillatum Dietel (図-16, 17)

II, III. ミツモトソウ [*Potentilla cryptotaeniae* Maxim.] に寄生 (Sept. 7, 1967, TS-R3570-3573 ; Oct. 8, 1968, TS-R2544, 2545 ; Oct. 23, 1972, TS-R2984 ; July 27, 1979, TS-R3142).

Phragmidium pauciloculare (Diet.) P. et H. Sydow

II, III. ナワシロイチゴ [*Rubus parvifolius* L. var. *triphyllus* Nakai] に寄生 (July 26, 1980, TS-R3304).

Phragmidium rosae-multiflorae Dietel (図-18)

0, I, II, III. ノイバラ [*Rosa multiflora* Thunb.] に寄生 (Sept. 6, 1967, TS-R2983 ; Aug. 7, 1972, TS-R2843 ; July 22, 1974, TS-R3645 ; Sept. 3, 1975, TS-R2176-2184 ; July 24, 1978, TS-R3137 ; July 27, 1979, TS-R3138, 3686 ; July 25, 1980, TS-R3240 ; July 26, 1980, TS-R3241 ; July 29, 1981, TS-R3044 ; July 30, 1981, TS-R3045, 3727, 3728 ; July 26, 1982, TS-R3747 ; July 27, 1982, TS-R3759, 3766, 3767).

Triphragmium ulmariae Link (図-19)

0, II, III. シモツケソウ [*Filipendula multijuga* Maxim.] に寄生 (Oct. 8, 1968, TS-R2027-2030).

Endophylloides lysimachiae S. Kaneko et Hiratsuka, f.

III. コナスビ [*Lysimachia japonica* Thunb.] に寄生 (July 27, 1979, TS-R3108, 3696).

Gymnosporangium miyabei Yamada et Miyake (図-20, 21)

0, I. ズミ [*Malus sieboldii* Rehder] に寄生 (July 5, 1972, TS-R2794 ; July 22, 1974, TS-R3631-3634 ; July 26, 1979, TS-R3125, 3677 ; July 27, 1979, TS-R 3126-3128, 3697 ; July 26, 1980, TS-R3254-3256 ; July 30, 1981, TS-R2429, 3038, 3039 ; July 26, 1982, TS-R3740-3742 ; July 27, 1982, TS-R2725-2729, 3371, 3391-3395).

Uromyces fabae De Bary (図-22)

0, I, II, III. レンリソウ [*Lathyrus palustris* L. var. *linearifolius* Ser.] に寄生 (Aug. 21, 1960, TS-R2989-2992).

0, I, II, III. クサフジ [*Vicia cracca* L. var. *japonica* Miq.] に寄生 (Aug. 21, 1960, TS-R2986, 2987 ; Oct. 8, 1968, TS-R2048, 2049 ; Aug. 30, 1972, TS-R2914, 1915 ; Sept. 10, 1976, TS-R3198-3200 ; July 24, 1978, TS-R3287 ; July 27, 1979, TS-R3169 ; July 25, 1980, TS-R3288-3290 ; July 29, 1981, TS-R3051 ; July 26, 1982, TS-R2749-2751).

Uromyces fallens Kern ex Bartholomew

0, I, II, III. ムラサキツメクサ [*Trifolium pratense* L. var. *sativa* Ser.] に寄生 (Sept. 5, 1967, TS-R3493 ; Aug. 30, 1972, TS-R2948).

Uromyces geranii (DC.) Léveillé (図-24, 25)

0, I, II, III. ハクサンフウロ [*Geranium yessoense* Franch. et Savat. var. *nipponicum* Nakai] に寄生 (Sept. 6, 1967, TS-R3481-3490 ; Sept. 7, 1967, TS-R2520, 2521 ; Oct. 8, 1968, TS-R2045-2047 ; Sept. 16, 1969, TS-R2571 ; Sept. 4, 1975, TS-R3661 ; Sept. 10, 1976, TS-R2661, 3191-3193 ; July 24, 1978, TS-R3159, 3182 ; July 26, 1979, TS-R3183, 3674 ; July 27, 1979, TS-R3160 ; July 25, 1980, TS-R3251, 3252 ; July 26, 1980, TS-R3253 ; July 29, 1981, TS-R3052 ; July 30, 1981, TS-R2435 ; July 26, 1982, TS-R2702, 2703, 3738, 3739). 新寄主.

Uromyces heimerlianus Magnus (図-23)

II, III. タニワタン (ナンテンハギ) [*Vicia unijuga* A. Braun] に寄生 (Sept. 6, 1967, TS-R2035, 2036, 2039 ; Oct. 8, 1968, TS-R2037, 2038 ; Sept. 16, 1969, TS-R2572 ; Aug. 29, 1972, TS-R2568-2570 ; Oct. 16, 1972, TS-R2634-2636 ; Sept. 4, 1975, TS-R2040-2044, 3658-3660 ; July 26, 1976, TS-R3680, 3681 ; Sept. 10, 1976, TS-R3805).

Uromyces itoanus Hiratsuka, f.

0, I, II, III. ヤハズソウ [*Kummerowia striata* Schindl.] に寄生 (Sept. 5, 1967, TS-R3502, 3513 ; Oct. 8, 1968, TS-R2862, 2863).

Uromyces lespedezae-procumbentis (Schw.) Curtis (図-26)

0, I, II, III. ヤマハギ [*Lespedeza bicolor* Turcz. var. *japonica* Nakai] に寄生 (Sept. 6, 1967, TS-R2988, 3453, 3454 ; Oct. 8, 1968, TS-R2065-2070 ; Sept. 16, 1969, TS-R2573 ; Sept. 8, 1971, TS-R2574-2576 ; Oct. 16, 1972, TS-R2577, 2578 ; Sept. 3, 1975, TS-R2077-2080 ; Sept. 4, 1975, TS-R2081-2083, 3662-3666 ; Sept. 10, 1976, TS-R2071-2076 ; July 28, 1979, TS-R3285).

Uromyces muehlenbergiae S. Ito

II, III. ネズミガヤ [*Muehlenbergia japonica* Steud.] に寄生 (Oct. 7, 1968, TS-R2033, 2034).

Uromyces rudbeckiae Arthur et Holway (図-27)

III. アキノキリンソウ [*Solidago virgaurea* L.] に寄生 (Sept. 7, 1967, TS-R3564 ; Aug. 7, 1972, TS-R2977 ; Aug. 30, 1972, TS-R2985 ; Sept. 10, 1976, TS-R2659 ; July 24, 1978, TS-R3161 ; July 25, 1978, TS-R3163 ; July 27, 1978, TS-R3162 ; July 27, 1979, 3164-3168 ; July 6, 1980, TS-R3320 ; July 25, 1980, TS-R3250 ; July 26, 1980, TS-R3249 ; July 30, 1981, TS-R3055, 3056, 3718).

Puccinia absinthii (Hedw. f.) DC. (図-28)

II, III. オトコヨモギ [*Artemisia japonica* Thunb.] に寄生 (Oct. 8, 1968, TS-R2492, 2493, 3443-3445).

II, III. ヨモギ [*Artemisia dubia* Wall.] に寄生 (Sept. 5, 1967, TS-R3506-3509 ; Sept. 6, 1967, TS-R2451, 3414, 3415, 3455 ; Sept. 7, 1967, TS-R3538-3541 ; Oct. 7, 1968, TS-R2157-2159 ; Oct. 8, 1968, TS-R2156, 2485-2491 ; Aug. 29, 1972, TS-R2363-2365 ; Sept. 28, 1972, TS-R2367-2370 ; Oct. 16, 1972, TS-R2371, 2978 ; Sept. 4, 1975, TS-R2160, 2161 ; July 26, 1979, TS-R3089 ; July 27, 1979, TS-R3715 ; July 30, 1981, TS-R3060).

Puccinia allii (DC.) Rudolphi

II, III. ネギ [*Allium fistulosum* L.] に寄生 (Sept. 5, 1967, TS-R3512).

Puccinia angustata Peck

II, III. アブラガヤ [*Scirpus wichurai* Boeck. var. *concolor* Ohwi] に寄生 (Oct. 8, 1968, TS-R2461, 2462 ; Sept. 3, 1975, TS-R2164-2175 ; July 26, 1978, TS-R3298).

Puccinia aomoriensis P. et H. Sydow

0, I. オケラ [*Atractylis lyrata* Sieb. et Zucc.] に寄生 (July 25, 1978, TS-R3061, 3181 ; July 28, 1979, TS-R3062 ; July 26, 1980, TS-R3305 ; July 29, 1981, TS-R3001, 3002 ; July 30, 1981, TS-R2430 ; July 26, 1982, TS-R3746 ; July 27, 1982, TS-R2667-2671, 3768).

Puccinia arenariae (Schum.) Winter

III. フシグロセンノウ [*Lychnis miqueliana* Rohr.] に寄生 (July 27, 1982, TS-R2797, 2798).

Puccinia arundinellae-anomalae Dietel (図-29)

0, I. イヌゴマ [*Stachys riederi* Cham. var. *dispidula* Hara] に寄生 (July 29, 1981, TS-R3324).

II, III. トダシバ [*Arundinella hirta* Tanaka var. *ciliata* Koidz.] に寄生 (Sept. 8, 1967, TS-R3449 ; Oct. 7, 1968, TS-R3447, 3448 ; Oct. 8, 1968, TS-R3450, 3451 ; July 25, 1980, TS-R3299 ; July 29, 1981, TS-R3323).

Puccinia bistortae DC. (図-30)

II, III. イブキトラノオ [*Bistorta vulgaris* Hill. var. *nitens* Nakai] に寄生 (July 6, 1967, TS-R2647, 2648 ; Sept. 6, 1967, TS-R3459 ; Oct. 8, 1968, TS-R2456, 2528, 2529 ; July 5, 1972, TS-R2362, 2849 ; Sept. 3, 1975, TS-R2815-2819 ; Sept. 4, 1975, TS-R2455).

Puccinia brachypodii Otth

II, III. ヤマカモジグサ [*Brachypodium sylvaticum* Beauv. var. *miserum* Koidz.] に寄生 (Sept. 5, 1967, TS-R3491, 3492, 3511 ; Sept. 6, 1967, TS-R2494, 2495, 2498 ; Sept. 7, 1967, TS-R3524 ; Oct. 8, 1968, TS-R2499 ; Oct. 5, 1974, TS-R2496, 2497 ; July 27, 1976, TS-R3690 ; July 24, 1978, TS-R3100 ; July 27, 1979, TS-R3087 ; July 25, 1980, TS-R3208 ; July 26, 1980, TS-R3209 ; July 29, 1981, TS-R3005, 3006).

Puccinia caricis-blepharicarpae Hiratsuka, f.

0, I. サルトリイバラ [*Smilax china* L.] に寄生 (July 4, 1972, TS-R3790).

Puccinia caricis-siderostictae Dietel

0, I. ヤブレガサ [*Syneilesis palmata* (Thunb.) Maxim.] に寄生 (July 6, 1967, TS-R2163, 3426-3430 ; July 5, 1972, TS-R3788, 3789 ; Aug. 7, 1972, TS-R2650).

Puccinia chrysanthemi Roze (図-31)

II, III. リュウノウギク [*Chrysanthemum makinoi* Matsum. et Nakai] に寄生 (Sept. 6, 1967, TS-R3401-3410 ; Oct. 8, 1968, TS-R2162, 2463-2469).

Puccinia cirsii Lasch

0, II, III. ノアザミ [*Cirsium japonicum* DC.] に寄生 (Oct. 8, 1968, TS-R2501 ; July 15, 1971, TS-R2977 ; July 4, 1972, TS-R2917, 2926 ; July 5, 1972, TS-R2916, 2920, 2923-2925 ; Aug. 7, 1972, TS-R2951 ; Aug. 30, 1972, TS-R2921, 2922 ; Sept. 28, 1972, TS-R2918, 2919, 2928).

Puccinia coronata Corda (図-32)

0, I. クマヤナギ [*Berchemia racemosa* Sieb. et Zucc.] に寄生 (July 15, 1971, TS-R2352 ; July 5, 1972, TS-R2793 ; July 24, 1978, TS-R3070, 3111).

0, I. クロツバラ [*Rhamnus davurica* Pall. var. *nipponica* Makino] に寄生 (July 6, 1967, TS-R2447 ; July 4, 1972, TS-R2437-2439 ; July 27, 1979, TS-R3069 ; July 30, 1981, TS-R3058 ; July 26, 1982, TS-R2709, 2710, 3735-3737).

II, III. ヤマカモジグサ [*Brachypodium sylvaticum* Beauv. var. *miserum* Koidz.] に寄生 (Oct. 7, 1968, TS-R2826 ; Oct. 23, 1972, TS-R2939-2941 ; Oct. 5, 1974, TS-R2192).

II, III. ノガリヤス [*Calamagrostis arundinacea* Roth. var. *brachytricha* Hack.] に寄生 (Sept. 3, 1975, TS-R2191 ; Sept. 10, 1976, TS-R2666 ; July 24, 1978, TS-R3271).

II, III. ヤマアワ [*Calamagrostis eqigejos* Roth.] に寄生 (Sept. 6, 1967, TS-R2519 ; Oct. 7, 1968, TS-R2193 ; Oct. 5, 1974, TS-R2194-2198 ; July 26, 1979, TS-R3068 ; July 25, 1980, TS-R3210 ; July 29, 1981, TS-R3007, 3008).

Puccinia daisenensis Hiratsuka, f.

II, III. カリヤスモドキ [*Miscanthus oligostachyus* Stapf.] に寄生 (Oct. 8, 1968, TS

-R2190).

Puccinia dieteliana P. Sydow (図-33)

0, I, III. オカトラノオ [*Lysimachia clethroides* Duby] に寄生 (Sept. 6, 1967, TS-R3467 ; Sept. 7, 1967, TS-R3787 ; Sept. 3, 1975, TS-R3582, 3583 ; Sept. 4, 1975, TS-R3779, 3780 ; Sept. 10, 1976, TS-R3197, 3781-3786 ; July, 1978, TS-R3088 ; July 26, 1980, TS-R3311 ; July 29, 1981, TS-R3003 ; July 30, 1981, TS-R3004, 3734).

Puccinia erikssonii Bubák

II, III. コメガヤ [*Melica nutans* L.] に寄生 (July 27, 1979, TS-R3695).

Puccinia erythropus Dietel

II, III. カリヤスモドキ [*Miscanthus oligostachyus* Stapf.] に寄生 (Sept. 6, 1967, TS-R2470 -2474, 2517, 2518).

Puccinia ferruginosa P. et H. Sydow

III. ヨモギ [*Artemisia dubia* Wall.] に寄生 (July 5, 1972, TS-R2974 ; July 26, 1979, TS-R3092 ; July 27, 1979, TS-R3265 ; July 25, 1980, TS-R3262, 3263 ; July 26, 1980, TS-R3264).

Puccinia funkiae Dietel

II, III. ミズギボウシ [*Hosta lancifolia* Engl.] に寄生 (Sept. 7, 1967, TS-R3531-3535).

Puccinia glechomatis DC.

III. ラショウモンカズラ [*Meehanian urticifolia* Mak.] に寄生 (July 27, 1979, TS-R3086).

Puccinia graminis Persoon (図-34)

0, I. メギ [*Berberis thunbergii* DC.] に寄生 (July 6, 1967, TS-R2642 ; July 7, 1969, TS-R2448 ; July 5, 1972, TS-R3794 ; July 12, 1981, TS-R3345).

II, III. カモジグサ [*Agropyron kamoji* Ohwi] に寄生 (Oct. 8, 1968, TS-R2818 ; Sept. 16, 1969, TS-R2649).

II, III. ヤマスカボ [*Agrostis clavata* Trin.] に寄生 (Oct. 8, 1968, TS-R2482-2484 ; July, 1969, TS-R2086 ; Sept. 3, 1975, TS-R2152-2154 ; Sept. 10, 1976, TS-R2658 ; July 25, 1978, TS-R3778 ; July 27, 1979, TS-R3090 ; July 30, 1981, TS-R3012).

Puccinia hemerocallidis Thümen

0. I. オトコエシ [*Patrinia villosa* Juss.] に寄生 (July, 1972, TS-R2993 ; July 11, 1981, TS-R3337).

II, III. キスゲ (ユウスゲ) [*Hemerocallis thunbergii* Baker] に寄生 (Sept. 7, 1967, TS-R2446 ; Sept. 16, 1969, TS-R2404 ; Sept. 4, 1975, TS-R2853).

Puccinia hieracii Martius

II, III. コウゾリナ [*Picris japonica* Thunb.] に寄生 (Sept. 7, 1967, TS-R3548 ; Sept. 30, 1972, TS-R2979 ; July 26, 1980, TS-R3293 ; July 30, 1981, TS-R3016 ; July 27, 1982, TS-R2743, 2744).

Puccinia horiana Hennings

III. リュウノウギク [*Chrysanthemum makinoi* Matsum. et Nakai] に寄生 (Sept. 16, 1969, TS-R2653 ; Sept. 3, 1975, TS-R2155).

Puccinia lactucae-debilis Dietel

0, I, II, III. ニガナ [*Ixeris dentata* Nakai] に寄生 (July 26, 1979, TS-R3097 ; July 25, 1980, TS-R3214, 3215 ; July 21, 1982, TS-R2745).

Puccinia lactucae-denticulatae Dietel

II, III. ヤクシソウ [*Youngia denticulata* (Hautt.) Kitam.] に寄生 (Sept. 6, 1967, TS-R3411, 3412).

Puccinia linosyridi-caricis Ed. Fischer (図-35)

0, I. シラヤマギク [*Aster scaber* Thunb.] に寄生 (July 6, 1967, TS-R2500, 3434 ; July 15, 1971, TS-R2565-2567 ; July 5, 1972, TS-R2852 ; Aug. 7, 1972, TS-R2651 ; July 31, 1976, TS-R215 ; July 24, 1978, TS-R3098, 3170, 3171 ; July 25, 1978, TS-R3172, 3173 ; July 27, 1979, TS-R3099 ; July 25, 1980, TS-R3223 ; July 26, 1980, TS-R3224 ; July 12, 1981, TS-R3335 ; July 29, 1981, TS-R3053 ; July 30, 1981, TS-R3054, 3719 ; July 26, 1982, TS-R3748 ; July 27, 1982, TS-R2730-2732, 3760).

II, III. ホソバヒカゲスゲ [*Carex humilis* Less.] に寄生 (July 6, 1967, TS-R2802 ; May 2, 1977, TS-R211).

Puccinia longicornis Patouillard et Hariot

II, III. ミヤコザサ [*Sasa nipponica* Mak. et Shibata] に寄生 (Oct. 8, 1968, TS-R2538-2543, 2819 ; Sept. 28, 1970, TS-R2814-2817 ; Sept. 8, 1971, TS-R2952 ; July 4, 1972, TS-R2946, 2947 ; July 5, 1972, TS-R2654, 2655, 2943-3945 ; Oct. 23, 1972, TS-R2813 ; Sept. 3, 1975, TS-R2322, 2323 ; July 26, 1979, TS-R3071 ; July 27, 1979, TS-R3072 ; July 29, 1981, TS-R3017 ; July 26, 1982, TS-R2742, 3369).

Puccinia majanthemi Dietel (図-36)

III. マイズルソウ [*Majanthemum bifolium* F. W. Schm.] に寄生 (July 26, 1980, TS-R3211 ; July 30, 1981, TS-R3019, 3725, 3726 ; July 27, 1982, TS-R2752, 3765).

Puccinia menthae Persoon (図-37)

0, I, II, III. クルマバナ [*Clinopodium chinense* Kuntze] に寄生 (Aug. 29, 1972, TS-R2842 ; Aug. 30, 1972, TS-R2420 ; Oct. 23, 1972, TS-R2421).

0, I, II, III. ハッカ [*Mentha nipponensis* Kudo] に寄生 (Aug. 30, 1972, TS-R2357-2361, 2419 ; Sept. 30, 1972, TS-R2354-2356).

Puccinia metanarthecei Patouillard (図-38)

II, III. ノギラン [*Metanartheceum luteo-viride* Maxim.] に寄生 (Sept. 6, 1967, TS-R2502 ; Sept. 16, 1969, TS-R2422 ; Sept. 4, 1975, TS-R2458 ; July 28, 1979, TS-R3085).

Puccinia miscanthi Miura

0, I. オオバコ [*Plantago asiatica* L.] に寄生 (July 4, 1972, TS-R3795 ; July 27, 1979, TS-R3093, 3694 ; July 30, 1981, TS-R3010).

II, III. ススキ [*Miscanthus sinensis* Anders.] に寄生 (Sept. 6, 1967, TS-R2522, 2523, 2980, 2981, 2468 ; Sept. 7, 1967, TS-R3514 ; Oct. 8, 1968, TS-R2084, 2085, 2820 ; Sept. 16, 1969, TS-R3426 ; Aug. 7, 1972, TS-R2823 ; Sept. 4, 1975, TS-R2031, 2032 ; July 24, 1978, TS-R3094).

Puccinia miurae P. et H. Sydow

II, III. ヤマボクチ [*Synurus deltoides* Nakai] に寄生 (Sept. 7, 1967, TS-R3561 ; July 26, 1980, TS-R3277-3279 ; July 30, 1981, TS-R3011 ; July 27, 1982, TS-R3761).

Puccinia miyoshiana Dietel (図-39)

II, III. オオアブラススキ [*Spodiopogon sibiricus* Trin.] に寄生 (Sept. 6, 1967, TS-R3821-3823 ; Sept. 7, 1967, TS-R3819, 3820 ; Sept. 4, 1975, TS-R3811-3818).

Puccinia molinae Tulasne (図-40)

II, III. ヌマガヤ [*Moliniopsis japonica* Hayata] に寄生 (Oct. 8, 1968, TS-R3824-3831).

Puccinia nanbuana Hennings (図-41)

0, II, III. シラネセンキュウ [*Angelica polymorpha* Maxim.] に寄生 (Sept. 3, 1975, TS-R2026 ; Sept. 4, 1975, TS-R2646 ; July 27, 1979, TS-R3078, 3091, 3692 ; July 25, 1980, TS-R3213 ; July 26, 1980, TS-R3212 ; July 29, 1981, TS-R3079 ; July 30, 1981, TS-R3080).

0, II, III. シシウド [*Angelica schishiudo* Koidz.] に寄生 (Sept. 4, 1975, TS-R2644, 2645).

0, II, III. ノダケ [*Angelica decursiva* Franch. et Sav.] に寄生 (Sept. 7, 1967, TS-2515 ; TS-R3456, 3458, 3469 ; Oct. 8, 1968, TS-R2534 ; Sept. 8, 1971, TS-R2415, 2416, 2423 ; July, 1972, TS-R2418 ; Aug. 7, 1972, TS-R2410-2414 ; Aug. 30, 1972, TS-R2407-2409 ; Sept. 30, 1972, TS-R2417 ; Sept. 3, 1975, TS-R2023-2025 ; Sept. 4, 1975, TS-R2017-2022 ; Sept. 10, 1976, TS-R3295 ; July 25, 1978, TS-R3076 ; July 27, 1979, TS-R3077 ; July 26, 1980, TS-R3310 ; July 30, 1981, TS-R3009).

Puccinia nishidana Hennings

II, III. ノアザミ [*Cirsium japonicum* DC.] に寄生 (Sept. 7, 1967, TS-R3542-3547 ; Oct. 8, 1968, TS-R2504 ; Aug. 29, 1972, TS-R2935, 2936 ; Sept. 30, 1972, TS-R2931-2933 ; Oct. 16, 1972, TS-R2937, 2938).

Puccinia nolitangeris Corda (図-42)

II, III. ツリフネソウ [*Impatiens textori* Miq.] に寄生 (Sept. 6, 1967, TS-R2994-2996 ; Aug. 7, 1972, TS-R2903, 2904 ; Aug. 29, 1972, TS-R2406 ; Aug. 30, 1972, TS-R2405 ; Sept. 3, 1975, 2087-2091).

Puccinia patriniae Hennings (図-43)

III. オトコエシ [*Patrinia villosa* Juss.] に寄生 (July 27, 1979, TS-R3083, 3084, 3702-3704).

Puccinia phragmitis (Schum.) Körnicke

0, I. イタドリ [*Polygonum cuspidatum* Sieb. et Zucc.] に寄生 (July 4, 1972, TS-R2353).

Puccinia polygoni-amphibii Persoon (図-44, 45, 46)

0, I. ハクサンフウロ [*Geranium yesoense* Franch. et Sav. var. *nipponicum* Nakai] に寄生 (July 4, 1972, TS-R2400, 2402, 2403 ; July 5, 1972, TS-R2396-2399, 2401 ; July 26, 1982, TS-R2704).

0, I. ゲンノショウコ (フウロウソウ) [*Geranium thunbergii* Sieb. et Zucc.] に寄生 (July 4, 1972, TS-R2395 ; July 27, 1979, TS-R3065).

II, III. ミゾソバ [*Polygonum thunbergii* Sieb. et Zucc.] に寄生 (Aug. 7, 1972, TS-R2905, 2906 ; Aug. 30, 1972, TS-R2386, 2387 ; July 22, 1974, TS-R3642 ; Sept. 3, 1975, TS-R3617-3620 ; Sept. 4, 1975, TS-R2131).

II, III. ミヤマタニソバ [*Polygonum debile* Meisn.] に寄生 (Sept. 3, 1975, TS-R3621-3624).

II, III. アキノウナギツカミ [*Polygonum sieboldii* Meisn.] に寄生 (Sept. 5, 1967, TS-R3497, 3498 ; Oct. 8, 1968, TS-R2321, 2503 ; July 15, 1971, TS-R2394 ; July 4, 1972, TS-R2393 ; July 5, 1972, TS-R2392 ; Aug. 7, 1972, TS-R2894 ; Aug. 29, 1972, TS-R2391 ; Aug. 30, 1972, TS-R2388-2390 ; Sept. 3, 1975, TS-R2113-2118 ; Sept. 10, 1976, TS-R2119-2130, 3201 ; July 24, 1978, TS-R3066 ; July 26, 1979, TS-R3676 ; July 27, 1979, TS-R3064 ; July 6, 1980, TS-R3318 ; July 25, 1980, TS-R3218-3220 ; July 12, 1981, TS-R3340 ; July 30, 1981, TS-R2434 ; July 26, 1982, TS-R2705-2708).

II, III. イタドリ [*Polygonum cuspidatum* Sieb. et Zucc.] に寄生 (Sept. 7, 1967, TS-R2112, 2318-2320, 2516 ; Sept. 7, 1967, TS-R2308, 2309 ; Oct. 8, 1968, TS-R2310-2317 ; Sept. 8, 1971, TS-R2384, 2385 ; July 4, 1972, TS-R2383 ; Aug. 7, 1972, TS-R2886, 2887 ; Aug. 29, 1972, TS-R2372-2379 ; Oct. 16, 1972, TS-R2382 ; Oct. 23, 1972, TS-R2380, 2381 ; Sept. 4, 1975, TS-R2098-2111 ; July 25, 1978, TS-R3067 ; July 27, 1980, TS-R3216, 3217).

Puccinia punctata Link (図-47)

0, I, II, III. カワラマツバ [*Galium verum* L. var. *asiaticum* Nakai f. *nikkoense* Ohwi] に寄生 (Sept. 5, 1967, TS-R3503-3505 ; Oct. 7, 1967, TS-R2459 ; Oct. 8, 1968, TS-R3436 ; Sept. 16, 1969, TS-R2092 ; Sept. 10, 1976, TS-R2093-2096, 2660 ; July 24, 1978, TS-R3801, 3185 ; July 26, 1979, TS-R3082 ; July 27, 1979, TS-R3184 ; June 14, 1980, TS-R3312 ; July 6, 1980, TS-R3319 ; July 25, 1980, TS-R3221, 3222 ; July 29, 1981, TS-R3014, 3015 ; July 30, 1981, TS-R2433 ; July 26, 1982, TS-R2697-2701).

Puccinia pygmaea Eriksson

II, III. ヤマアワ [*Calamagrostis epigejos* Roth.] に寄生 (Sept. 5, 1967, TS-R2452, 3510 ; Oct. 7, 1968, TS-R2133 ; Oct. 8, 1968, TS-R2132, 3438 ; Sept. 10, 1976, TS-R3270).

Puccinia recondita Roberge ex Desmazières

0, I. サラシナショウマ [*Cimicifuga simplex* Wormsk.] に寄生 (July 4, 1972, TS-R3799, 3800, 3810 ; July 5, 1972, TS-R3796-3798 ; July 27, 1979, TS-R3096, 3140, 3141).

0, I. アキカラマツ [*Thalictrum thunbergii* DC. var. *hypoleucum* Nakai] に寄生 (July, 1978, TS-R3073 ; June 14, 1980, TS-R3313 ; July 6, 1980, TS-R3321 ; July 11, 1981, TS-R3338).

II, III. カモジグサ [*Agropyron kamoji* Ohwi] に寄生 (Sept. 29, 1972, TS-R3942 ; July 25, 1980 ; TS-R3226, 3227, 3258).

Puccinia taganesuge Miura ex S. Ito et Homma

II, III. タガネソウ [*Carex siderosticta* Hance.] に寄生 (Oct. 16, 1972, TS-R2656 ; Oct. 23, 1972, TS-R2657 ; July 25, 1980, TS-R3806 ; July 26, 1980, TS-R3807, 3808).

Puccinia togashiana Hiratsuka, f. (図-48)

III. アキカラマツ [*Thalictrum thunbergii* DC. var. *hypoleucum* Nakai] に寄生 (July 26, 1979, TS-R3074, 3075, 3095, 3673 ; June 14, 1980, TS-R3314 ; July 25, 1980, TS-R3301 ; July 12, 1981, TS-R3339 ; July 29, 1981, TS-R3013 ; July 30, 1981, TS-R2436 ; July 31, 1981, TS-R3325 ; July 26, 1982, TS-R2672-2676).

Puccinia veronicarum DC.

III. ヒメトラノオ [*Veronica rotunda* Nakai var. *petiolata* Nakai] に寄生 (Sept. 3, 1975, TS-R3379).

III. ヤマトトラノオ [*Veronica rotunda* Nakai var. *subintegra* Yamazaki] に寄生 (Aug. 29, 1972, TS-R2366, 2546, 2547 ; Sept. 3, 1975, TS-R3380-3386 ; Sept. 4, 1975, TS-R2548, 2549 ; July 25, 1978, TS-R3294).

Puccinia violae (Schum.) DC. (図-49,50)

0, I, II, III. アオイスミレ [*Viola hondoensis* W. Becker et H. Boiss.] に寄生 (July 4, 1972, TS-R2883, 2884 ; July 27, 1982, TS-R3758, 3804).

0, I, II, III. タチツボスミレ [*Viola grypoceras* A. Gray] に寄生 (July 27, 1979, TS-R3063 ; July 27, 1979, TS-R3693 ; July 29, 1979, TS-R3292 ; July 27, 1982, TS-R2773, 3372, 3757).

***Puccinia virgae-aureae* (DC.) Libert**

III. アキノキリンソウ [*Solidago virgaurea* L.] に寄生 (July 26, 1982, TS-R2746-2748 ; July 27, 1982, TS-R3801-3803, 3400).

***Puccinia zoysiae* Dietel**

II, III. シバ [*Zoysia japonica* Steud.] に寄生 (Sept. 10, 1976, TS-R2097).

***Miyagia anaphalidis* Miyabe ex P. et H. Sydow**

0, I, II, III. ヤマハハコ [*Anaphalis margaritacea* Benth. et Hook. f.] に寄生 (July 27, 1979, TS-R3136 ; July 11, 1980, TS-R3336).

Uredinales Imperfecti

***Uredo caricis-incisae* S. Ito (図-51)**

II. カワラスゲ (タニスゲ) [*Carex incisa* Boott.] に寄生 (Oct. 5, 1974, TS-R2770-2772 ; Sept. 3, 1975, TS-R3586-3588 ; Sept. 4, 1975, TS-R3654, 3655, 3667, 3668 ; July 26, 1980, TS-R3266-3268 ; July 27, 1982, TS-R2768, 2769).

***Uredo iyoensis* Hiratsuka, f. et Yoshinaga (図-52)**

II. マルバスマイレ [*Viola keiskei* Mix.] に寄生 (July 26, 1980, TS-R3373 ; July 30, 1981, TS-R3374, 3776 ; July 27, 1982, TS-R2753-2757, 3375).

II. タチツボスミレ [*Viola grypoceras* A. Gray] に寄生 (July 27, 1979, TS-R3291).

II. アケボノスミレ [*Viola rossii* Hemsl.] に寄生 (Oct. 23, 1972, TS-R2885 ; July 30, 1981, TS-R3777 ; July 26, 1982, TS-R3750, 3751).

***Aecidium adenophorae-verticillatae* P. et H. Sydow**

0, I. ツリガネニンジン [*Adenophora triphylla* A. DC. var. *japonica* Hara] に寄生 (July 5, 1972, TS-R3793).

Aecidium circaeae Ces. et Mont.

0, I. タニタデ [*Circaea erubescens* Franch. et Sav.] に寄生 (July 27, 1979, TS-R3109, 3691 ; July 30, 1981, TS-R2432, 3027 ; July 26, 1982, TS-R2758, 3752 ; July 27, 1982, TS-R3762).

Aecidium dispori Dietel

0, I. チゴユリ [*Disporum smilacinum* A. Gray] に寄生 (July 4, 1972, TS-R3792 ; July 26, 1978, TS-R3110 ; July 27, 1980, TS-R3302 ; July 27, 1982, TS-R2677).

Aecidium enkianthi Dietel

0, I. サラサドウダン [*Enkianthus campanulatus* Nichols.] に寄生 (July 4, 1972, TS-R3791 ; July 7, 1980, TS-R3322 ; July 26, 1980, TS-R3280-3282 ; July 30, 1981, TS-R2431, 3024, 3025 ; July 27, 1982, TS-R2691, 3755, 3756).

Aecidium epimedii Hennings et Shirai (図-53)

0, I. イカリソウ [*Epimedium macranthum* Morr. et Decne. var. *violaceum* Franch.] に寄生 (July 15, 1971, TS-R2347 ; July 4, 1972, TS-R2345, 2346 ; July 5, 1972, TS-R2336-2344 ; July 26, 1972, TS-R2686-2690 ; Aug. 7, 1972, TS-R2652 ; July, 1978, TS-R3104 ; July 26, 1979, TS-R3105, 3675 ; July 27, 1979, TS-R3107 ; July 29, 1979, TS-R 3106 ; July 25, 1980, TS-R3228, 3229 ; July 12, 1981, TS-R3342 ; July 29, 1981, TS-R3026 ; July 26, 1982, TS-R3744).

Aecidium hydrangeae-paniculatae Dietel

0, I. ノリウツギ [*Hydrangea paniculata* Sieb. var. *floribunda* Rgl.] に寄生 (July 4, 1972, TS-R2348, 2351 ; July 5, 1972, TS-R2349, 2350 ; Aug., 1972, TS-R2848 ; July 22, 1974, TS-R3635-3637, 3641, 3643, 3644 ; July 27, 1979, TS-R3101-3103, 3705, 3706 ; July 26, 1980, TS-R3233, 3257 ; July 11, 1981, TS-R3341 ; July 30, 1981, TS-R3020, 3021, 3717, 3720 ; July 27, 1982, TS-R2692-2696, 3389, 3764 ; July 28, 1982, TS-R3390).

Aecidium mori Barclay

I. クワ [*Morus bombycis* Koidz.] に寄生 (Sept. 6, 1967, TS-R2150, 2151).

Aecidium nikkense Hennings et Shirai

0, I. メタカラコウ [*Ligularia stenocephala* Matsum. et Koidz.] に寄生 (July 27, 1982, TS-R3387).

Aecidium philadelphi Dietel

0, I. バイカウツギ [*Philadelphus satsumi* Sieb.] に寄生 (July 27, 1982, TS-R2681-2685).

摘 要

本稿は、筑波大学農林技術センターハヶ岳演習林およびその周辺地域で採集された銹菌類の目録である。本目録に列挙した銹菌類は 21 属 113 種である。

科 名	属 名	種類数
メラムブソラサビキン科 Melampsoraceae	<i>Uredinopsis</i>	2
	<i>Hyalopsora</i>	1
	<i>Melampsoridium</i>	3
	<i>Pucciniastrum</i>	3
	<i>Melampsora</i>	6
	<i>Phakopsora</i>	2
	<i>Cronartium</i>	1
	<i>Chrysomyxa</i>	1
	<i>Pucciniostele</i>	2
	<i>Coleosporium</i>	13
サビキン科 Pucciniaceae	<i>Pileolaria</i>	1
	<i>Xenodochus</i>	1
	<i>Phragmidium</i>	4
	<i>Triphragmium</i>	1
	<i>Endophylloides</i>	1
	<i>Gymnosporangium</i>	1
	<i>Uromyces</i>	8
	<i>Puccinia</i>	50
	<i>Miyagia</i>	1
不完全銹菌類 Uredinales Imperfecti	<i>Uredo</i>	2
	<i>Aecidium</i>	9
計		113

引 用 文 献

- 1) Hiratsuka, N. 1959. Materials for a rust-flora of the Japanese Archipelago. Trans. Mycol. Soc. Japan 2 : 9—11.
- 2) ——— 1976. Microcyclic species of *Puccinia* in the Japanese Archipelago. Rept. Tottori Mycol. Inst. (Japan) 14 : 1—77.
- 3) ——— and S. Kaneko. 1980. A new species of *Endophylloides* (Uredinales) from Japan. Proc. Japan Acad. Ser. B 56 : 215—220.
- 4) Kakishima, M. and S. Sato. 1979. Heteroecism of *Puccinia graminis* on *Agrostis clavata*. Trans. Mycol. Soc. Japan 20 : 167—169.
- 5) ——— and ——— 1980. Three *Puccinia* species parasitic on *Carex*. Trans. Mycol. Soc. Japan 21 : 35—45.
- 6) Hiratsuka, N. 1960. A provisional list of Uredinales of Japan proper and the Ryukyu Islands. Sci. Bull. Div. Agr. Home Econ. & Engineer., Univ. Ryukyus 7 : 189—314.
- 7) Kaneko, S. 1981. The species of *Coleosporium*, the causes of pine needle rusts, in the Japanese Archipelago. Rept. Tottori Mycol. Inst. (Japan) 19 : 1—159.
- 8) 伊藤誠哉 1938 大日本菌類誌, 第2巻第2号, 養賢堂, 東京, 249 pp.
- 9) ——— 1950 日本菌類誌, 第2巻第3号, 養賢堂, 東京, 435 pp

锈菌学名索引

<i>Aecidium adenophorae-verticillatae</i>	96	<i>Phragmidium rosae-multiflorae</i>	85
—— <i>circaeae</i>	97	<i>Pileolaria shiraiana</i>	84
—— <i>dispori</i>	97	<i>Puccinia absinthii</i>	87
—— <i>enkianthi</i>	97	—— <i>allii</i>	87
—— <i>epimedio</i>	97	—— <i>angustata</i>	88
—— <i>hydrangeae-paniculatae</i>	97	—— <i>aomoriensis</i>	88
—— <i>mori</i>	97	—— <i>arenariae</i>	88
—— <i>nikkense</i>	98	—— <i>arundinellae-anomala</i>	88
—— <i>philadelphi</i>	98	—— <i>bistortae</i>	88
<i>Chrysomyxa rhododendri</i>	81	—— <i>brachypodii</i>	88
<i>Coleosporium asterum</i>	81	—— <i>caricis-blepharicarpae</i>	89
—— <i>cimicifugatum</i>	82	—— <i>caricis-siderostictae</i>	89
—— <i>clematidis</i>	82	—— <i>chrysanthemi</i>	89
—— <i>clematidis-apiifoliae</i>	82	—— <i>cirsii</i>	89
—— <i>eupatorii</i>	82	—— <i>coronata</i>	89
—— <i>horianum</i>	83	—— <i>daisenensis</i>	89
—— <i>lycopi</i>	83	—— <i>dieteliana</i>	90
—— <i>neocacaliae</i>	83	—— <i>erikssonii</i>	90
—— <i>pedunculatum</i>	83	—— <i>erythropus</i>	90
—— <i>phellodendri</i>	83	—— <i>ferruginosa</i>	90
—— <i>pini-asteris</i>	84	—— <i>funkiae</i>	90
—— <i>plectranthi</i>	84	—— <i>glechomatis</i>	90
—— <i>yamabense</i>	84	—— <i>graminis</i>	90
<i>Cronartium quercuum</i>	80	—— <i>hemerocallidis</i>	91
<i>Endophylloides lysimachiae</i>	85	—— <i>hieracii</i>	91
<i>Gymnosporangium miyabei</i>	86	—— <i>horiana</i>	91
<i>Hyalospora polypodii</i>	78	—— <i>lactucae-debilis</i>	91
<i>Melampsora epiphylla</i>	79	—— <i>lactucae-denticulatae</i>	91
—— <i>humilis</i>	79	—— <i>linosyridi-caricis</i>	91
—— <i>kusanoi</i>	79	—— <i>longicornis</i>	92
—— <i>larici-capraearum</i>	79	—— <i>majanthemii</i>	92
—— <i>larici-populina</i>	80	—— <i>menthae</i>	92
—— <i>laricis</i>	80	—— <i>metanarthecii</i>	92
<i>Melampsoridium alni</i>	78	—— <i>miscanthi</i>	92
—— <i>betulinum</i>	78	—— <i>miurae</i>	92
—— <i>hiratsukanum</i>	78	—— <i>miyoshiana</i>	93
<i>Miyagia anaphalidis</i>	96	—— <i>moliniae</i>	93
<i>Phakopsora ampelopsidis</i>	80	—— <i>nanbuana</i>	93
—— <i>artemisiae</i>	80	—— <i>nishidana</i>	93
<i>Phragmidium griseum</i>	85	—— <i>nolitangeris</i>	93
—— <i>papillatum</i>	85	—— <i>patriniae</i>	93
—— <i>pauciloculare</i>	85	—— <i>phragmitis</i>	94

<i>Puccinia polygoni-amphibii</i>	94
——— <i>punctata</i>	94
——— <i>pygmaea</i>	95
——— <i>recondita</i>	95
——— <i>taganesuge</i>	95
——— <i>togashiana</i>	95
——— <i>veronicarum</i>	95
——— <i>violae</i>	95
——— <i>virgae-aureae</i>	96
——— <i>zoysiae</i>	96
<i>Pucciniastrum agrimoniae</i>	78
——— <i>epilobii</i>	79
——— <i>potentillae</i>	79
<i>Pucciniostele clarkiana</i>	81
——— <i>mandshurica</i>	81
<i>Triphragmium ulmariae</i>	85
<i>Uredinopsis hirosakiensis</i>	78
——— <i>komagatakensis</i>	78
<i>Uredo caricis-incisae</i>	96
——— <i>iyoensis</i>	96
<i>Uromyces fabae</i>	86
——— <i>fallens</i>	86
——— <i>geranii</i>	86
——— <i>heimerlianus</i>	86
——— <i>itoanus</i>	87
——— <i>lespedezae-procumbentis</i>	87
——— <i>muehlenbergiae</i>	87
——— <i>rudbeckiae</i>	87
<i>Xenodochus carbonarius</i>	85

寄主植物学名索引

- Adenophora remotiflora* 83
 ——— *triphylla* var. *japonica* 83, 96
Agirimonía pilosa var. *japonica* 78
Agropyron kamoji 90, 95
Agrostis clavata 90
Allium fistulosum 87
Alnus firma 78
 ——— *tinctoria* var. *obtusiloba* 78
Ampelopsis heterophylla var. *hancei* 80
Anaphalis margaritacea 96
Angelica decursiva 93
 ——— *polymorpha* 93
 ——— *schisoido* 93
Artemisia dubia 80, 87, 90
 ——— *japonica* 87
Arundinella hirta var. *ciliata* 88
Aster ageratoides var. *ovatus* 81
 ——— *ageratoides* var.
 semiamplexicaulis 81
 ——— *glehni* var. *hondoensis* 81
 ——— *scaber* 84, 91
Astilbe microphylla 81
 ——— *thunbergii* 81
Athyrium niponicum 78
 ——— *yokoscense* 78
Atractylis lyrata 88
Berberis thunbergii 90
Berchemia racemosa 89
Betula ermanii var. *communis* 78
 ——— *tauschii* 78
Bistorta vulgaris var. *nitens* 88
Brachypodium sylvaticum var.
 miserum 88, 89
Calamagrostis arundinacea var.
 brachytricha 89
 ——— *epigejos* 89, 95
Carex humilis 91
 ——— *incisa* 96
 ——— *siderosticta* 95
Chrysanthemum makinoi 89, 91
Cimicifuga simplex 82, 95
Circaea erubescens 97
Cirsium japonicum 89, 93
Clematis apiifolia 82
 ——— *stans* 82
Clinopodium chinense 92
Codonopsis lanceolata 83
Disporum smilacinum 97
Elsholtzia ciliata 84
Enkianthus campanulatus 97
Epilobium sp. 79
Epimedium macranthum var. *violaceum* ... 97
Eupatorium chinense var. *sachalinense* ... 82
 ——— *chinense* var. *simplicifolium* 82
Filipendula multijuga 85
Galium verum var. *asiaticum* f. *nikkoense* · 94
Geranium thunbergii 94
 ——— *yesoense* var. *nipponicum* ... 86, 94
Hemerocallis thunbergii 91
Hosta lancifolia 90
Hydrangea paniculata var. *floribunda* ... 97
Hypericum ascyron 79
Impatiens textori 93
Ixeris dentata 91
Kalimeris pinnatifida 82
Kummerowia striata 87
Lathyrus palustris var. *linearifolius* 86
Lespedeza bicolor var. *japonica* 87
Ligularia stenocephala 98
Lychnis miqueliana 88
Lysimachia clethroides 90
 ——— *japonica* 85
Majanthemum bifolium 92
Malus sieboldii 86
Meehanía urticifolia 90
Melica nutans 90
Mentha nipponensis 92
Metanarthecium luteo-viride 92
Miscanthus oligostachyus 89, 90
 ——— *sinensis* 92
Moliniopsis japonica 93
Morus bombycis 97

Muehlenbergia japonica	87	Veronica rotunda var. petiolata	95
Patrinia villosa	91, 93	Veronica rotunda var. subintegra	95
Petasites japonicus	84	Vicia cracca var. japonica	86
Phellodendron amurense	83	———— unijuga	86
Philadelphus satsumi	98	Viola grypoceras	96
Picris japonica	91	———— hondoensis	95
Pinus strobus	82	———— keiskei	96
Plantago asiatica	92	———— rossii	96
Plectrathus effusus	84	Vitis amurensis var. coignetii	80
———— inflexus	84	Youngia denticulata	91
———— japonicus	84	Zoysia japonica	96
———— kameba	84		
Polygonum cuspidatum	94		
———— debile	94		
———— sieboldii	94		
———— thunbergii	94		
Populus nigra var. italica	80		
———— sieboldii	80		
Potentilla cryptotaeniae	85		
———— freyniana	79		
Quercus crispula	80		
———— dentata	80		
Rhamnus davurica var. nipponica	89		
Rhododendron kaempferi	81		
Rhus trichocarpa	84		
Rosa multiflora	85		
Rubus microphyllus var. incisus	85		
———— parvifolius var. triphyllus	85		
———— wrightii	85		
Salix bakko	79		
———— integra	79		
———— sachalinensis	79		
Sanguisorba officinalis	85		
Sasa nipponica	92		
Saussurea maximowiczii	83		
Scirpus wichurai var. concolor	88		
Senecio cannabifolius	83		
Smilax china	89		
Solidago virgaurea	87, 96		
Spodiopogon sibiricus	93		
Stachys riederi var. dispidula	88		
Syneilesis palmata	89		
Synurus deltoides	92		
Thalictrum thunbergii var. hypoleucum	95		
Thelypteris palustris var. pubescens	78		
Trifolium pratense var. sativa	86		

寄主植物和名索引

アオイスマレ	95
アカショウマ	81
アカバナ属	79
アキカラマツ	95
アキノウナギツカミ	94
アキノキリンソウ	87, 96
アケボノスマレ	96
アブラガヤ	88
イカリソウ	97
イタドリ	94
イナカギク (ヤマシロギク)	81
イヌゴマ	88
イヌコリヤナギ	79
イヌワラビ	78
イブキトラノオ	88
オオアブラサスキ	93
オオバコ	92
オカトラノオ	90
オケラ	88
オトコエシ	91, 93
オトコヨモギ	87
オノエヤナギ (ナガバヤナギ)	79
カシワ	80
カメバヒキオコシ	84
カモジグサ	90, 95
カリヤスモドキ	89, 90
カワラスゲ (タニスゲ)	96
カワラマツバ	94
キスゲ (ユウスゲ)	91
キハダ	83
キンミズヒキ	78
クサフジ	86
クサボタン	82
クマイチゴ	85
クマヤナギ	89
クルマバナ	92
クロツバラ	89
クワ	97
ゲンノショウコ (フウロウソウ)	94
コウゾリナ	91
コナスビ	85
ゴマナ	81

コメガヤ	90
サラサドウダン	97
サラシナショウマ	82, 95
サルトリイバラ	89
シシウド	93
シバ	96
シモツケソウ	85
シラカンバ	78
シラネセンキュウ	93
シラヤマギク	84, 91
ススキ	92
ストローブマツ	82
ズミ	86
セイヨウハコヤナギ (ボブラ)	80
セキヤノアキショウジ	84
ソバナ	83
タガネソウ	95
ダケカンバ	78
タチツボスミレ	96
タニスゲ (カワラスゲ)	96
タニタデ	97
タニワタシ (ナンテンハギ)	86
チゴユリ	97
チダケサシ	81
ツリガネニンジン	83, 96
ツリフネソウ	93
ツルニンジン	83
トダシバ	88
トモエソウ	79
ナガバヤナギ (オノエヤナギ)	79
ナギナタコウジュ	84
ナワシロイチゴ	85
ナンテンハギ (タニワタシ)	86
ニガイチゴ	85
ニガナ	91
ヌマガヤ	93
ネギ	87
ネズミガヤ	87
ノアザミ	89, 93
ノイバラ	85
ノガリヤス	89
ノギラン	92

ノコンギク	81
ノダケ	93
ノブドウ	80
ノリウツギ	97
パイカウツギ	98
ハクサンフウロ	86, 94
ハコヤナギ (ヤマナラシ)	80
ハッカ	92
バッコヤナギ (ヤマネコヤナギ)	79
ハンゴンソウ	83
ヒキオコシ	84
ヒメシダ	78
ヒメトラノオ	95
ヒヨドリバナ	82
フウロウソウ (ゲンノショウコ)	94
フキ	84
フシグロセンノウ	88
ヘビノネコザ	78
ホソバヒカゲスゲ	91
ボタンズル	82
ポプラ (セイヨウハコヤナギ)	80
マイヅルソウ	92
マルバスマレ	96
ミズギボウシ	90
ミズナラ	80
ミゾソバ	94
ミツバツチグリ	79
ミツモトソウ	85
ミヤコアザミ	83
ミヤコザサ	92
ミヤマタニソバ	94
ムラサキツメクサ	86
メギ	90
メタカラコウ	98
ヤクシソウ	91
ヤシャブシ	78
ヤハズソウ	87
ヤブレガサ	89
ヤマアワ	89, 95
ヤマウルシ	84
ヤマカモジグサ	88, 89
ヤマシロギク (イナカギク)	81
ヤマツツジ	81
ヤマトラノオ	95
ヤマナラシ (ハコヤナギ)	80
ヤマヌカボ	90

ヤマネコヤナギ (バッコヤナギ)	79
ヤマハギ	87
ヤマハッカ	84
ヤマハハコ	96
ヤマハンノキ	78
ヤマブドウ	80
ヤマボクチ	92
ユウガギク	82
ユウスゲ (キスゲ)	91
ヨツバヒヨドリ	82
ヨモギ	80, 87, 90
ラショウモンカズラ	90
リュウノウギク	89, 91
レンリソウ	86
ワレモコウ	85

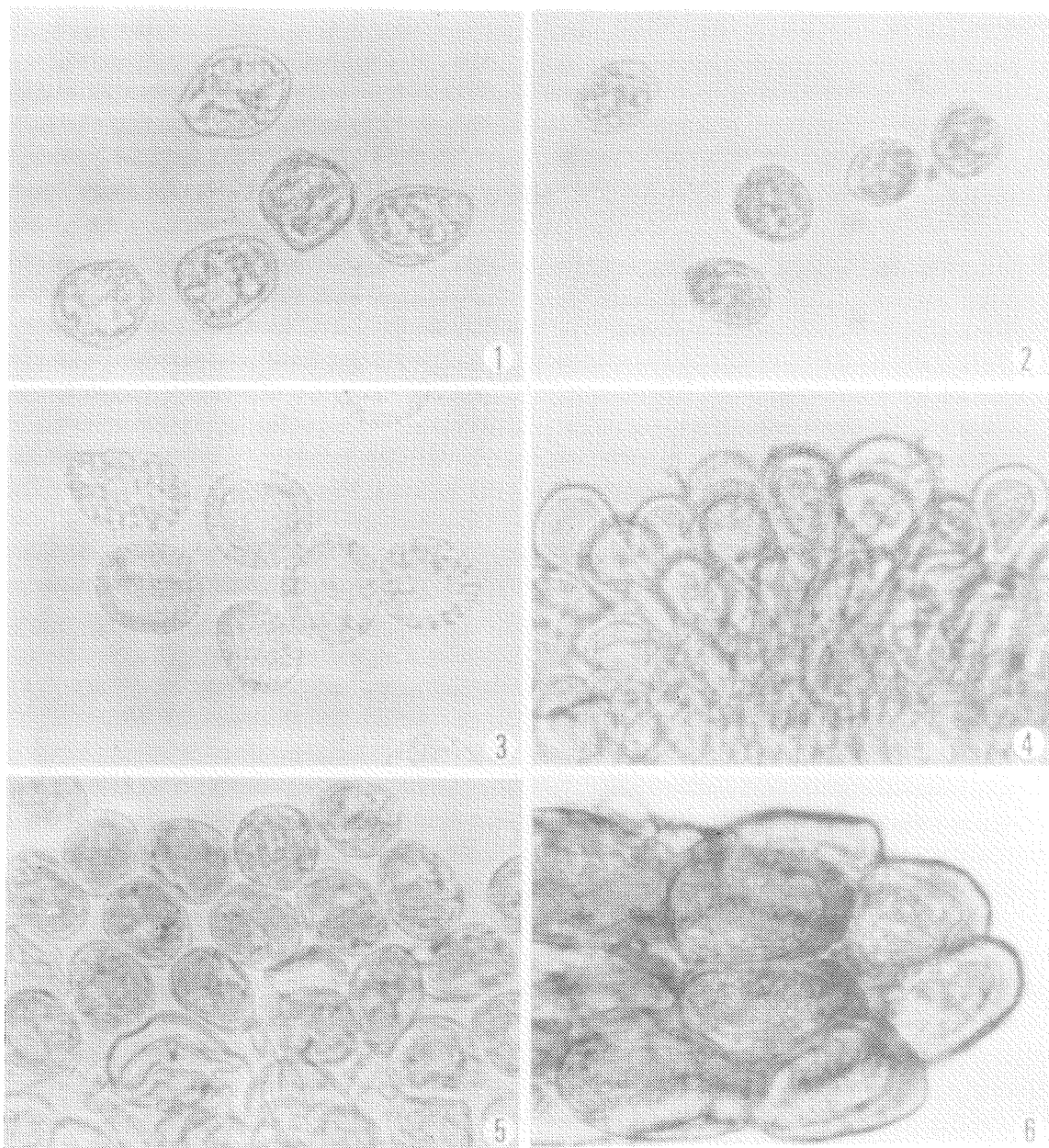


图 1 - 6

1. *Hyalopsora polypodii* (Diet.) Magnus (II, TS-R3129).
2. *Pucciniastrum agrimoniae* (Diet.) Tranzschel (II, TS-R3474).
3. *Melampsora larici-capraearum* Klebahn (II, TS-R3687).
4. *Melampsora larici-capraearum* Klebahn (糸状体, TS-R3687).
5. *Phakopsora ampelopsidis* Dietel et P. Sydow (II, TS-R2007).
6. *Cronartium quercuum* Miyabe ex Shirai (III, TS-R3551).

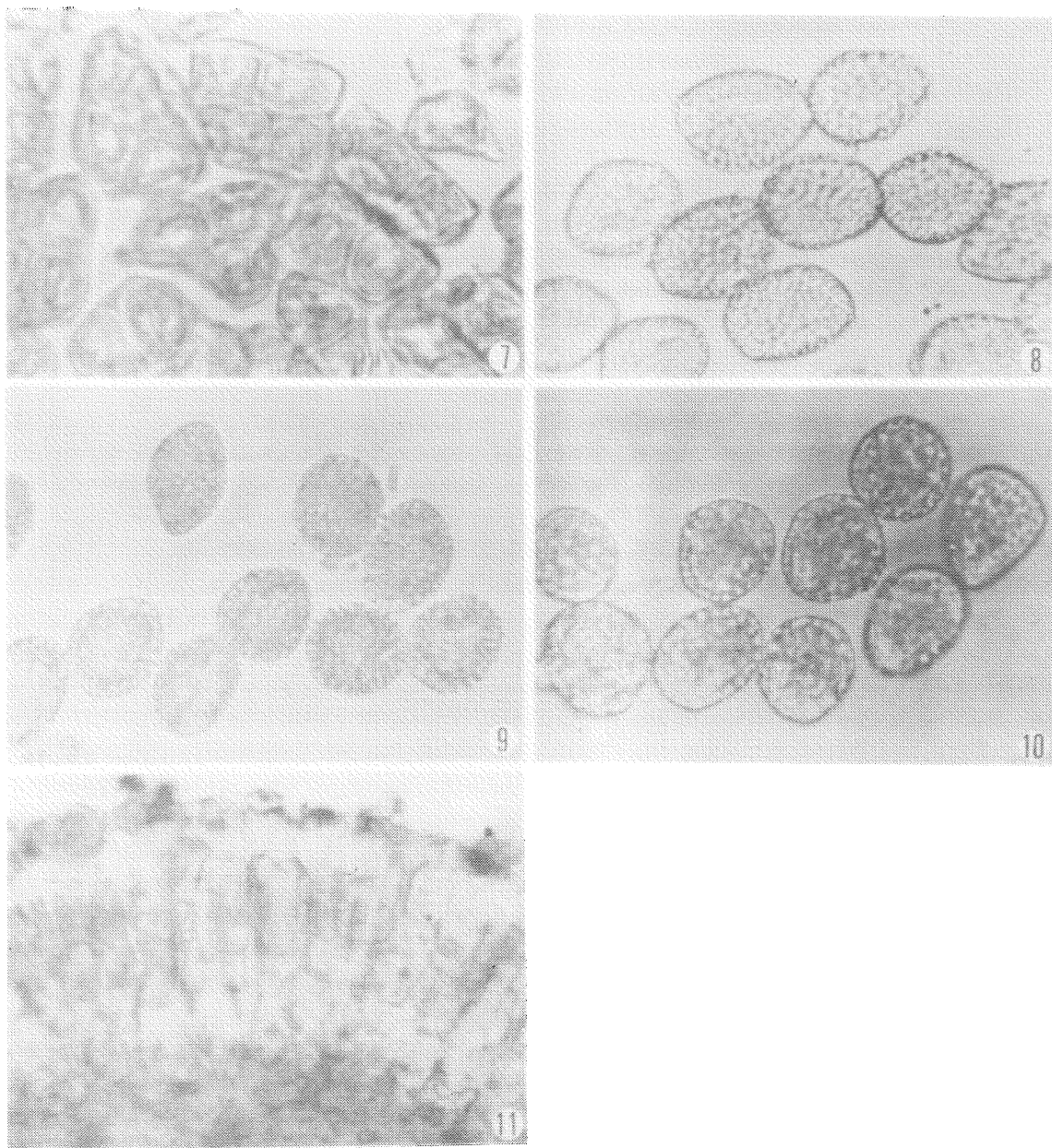


图 7—11

7. *Pucciniostele mandshurica* Dietel (III, TS-R3678).
8. *Coleosporium asterum* (Diet.) P. et H. Sydow (II, TS-R3000).
9. *Coleosporium eupatorii* Hiratsuka, f. (II, TS-R2740).
10. *Coleosporium phellodendri* Komarov (II, TS-R3710).
11. *Coleosporium pini-asteris* Orishimo (III, TS-R2601).

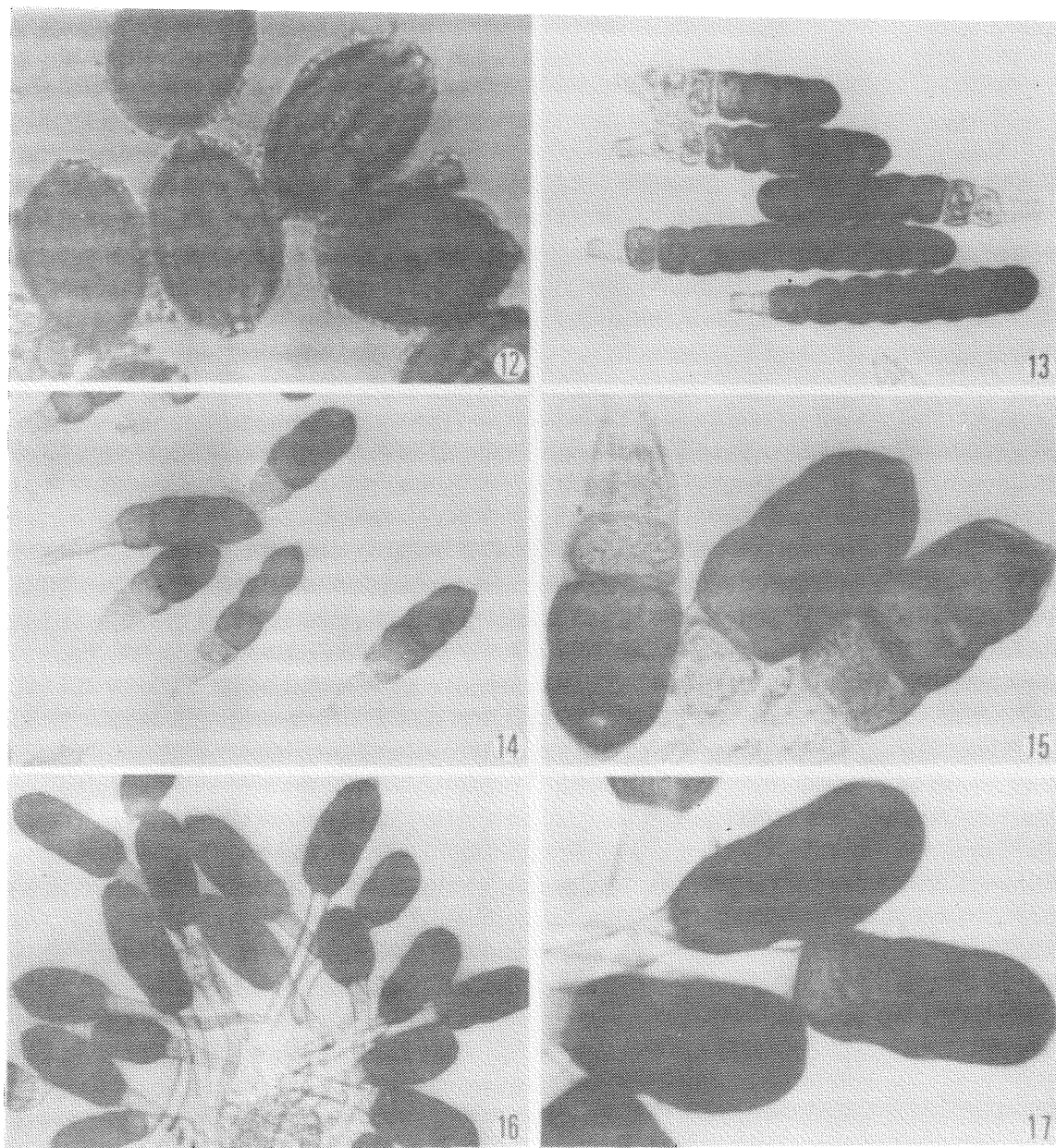


図12-17

12. *Pileolaria shiraiana* (Diet. et Syd.) S. Ito (II, TS-R3743).
13. *Xenodochus carbonarius* Schlechtendal (III, TS-R2050).
14, 15. *Phragmidium giseum* Dietel (III, TS-R2535).
16, 17. *Phragmidium papillatum* Dietel (III, TS-R2544).

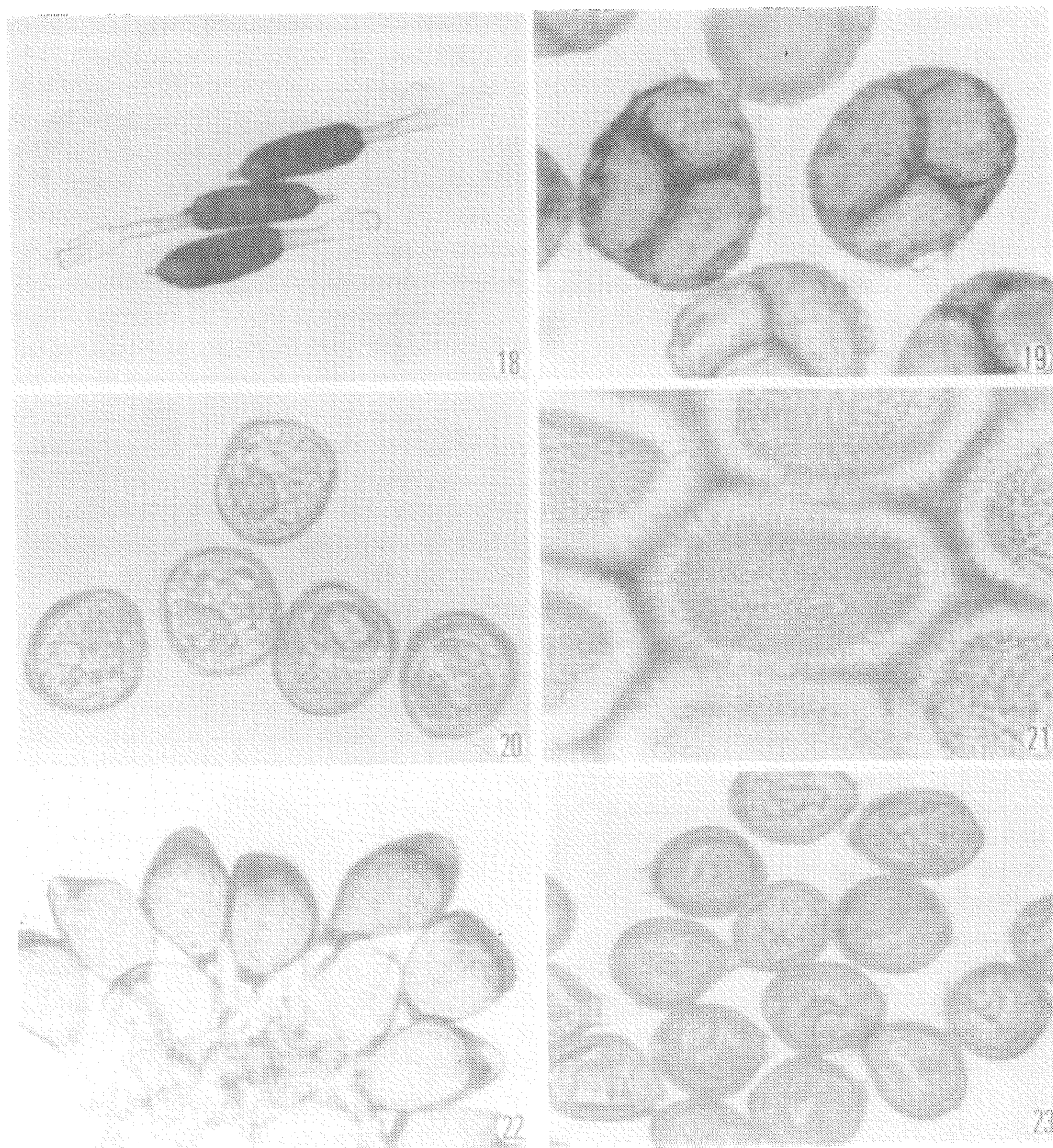


图18—23

18. *Phragmidium rosae-multiflorae* Dietel (III, TS-R3686).
19. *Triphragmium ulmariae* Link (III, TS-R2027).
20. *Gymnosporangium miyabei* Yamada et Miyake (I, TS-R3740).
21. *Gymnosporangium miyabei* Yamada et Miyake (護膜細胞, TS-R3740).
22. *Uromyces fabae* De Bary (III, TS-R2048).
23. *Uromyces heimerlianus* Magnus (III, TS-R3658).

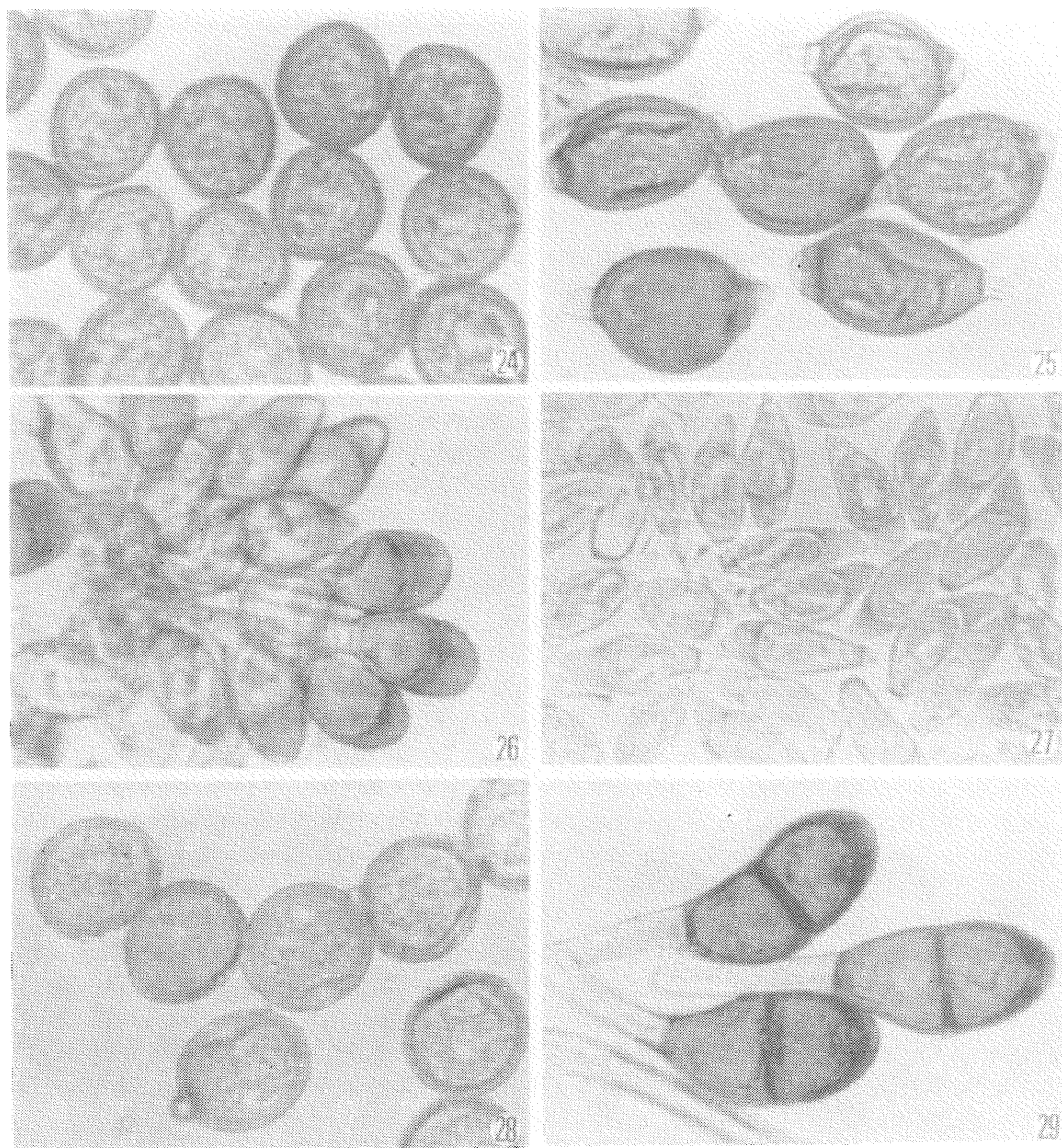


图24—29

24. *Uromyces geranii* (DC.) L  veill   (II, TS-R3674).
25. *Uromyces geranii* (DC.) L  veill   (III, TS-R2661).
26. *Uromyces lespedezae-procumbentis* (Schw.) Curtis (III, TS-R3662).
27. *Uromyces rudbeckiae* Arthur et Holway (III, TS-R2977).
28. *Puccinia absinthii* (Hedw. f.) DC. (II, TS-R2363).
29. *Puccinia arundinellae-anomalae* Dietel (III, TS-R3449).

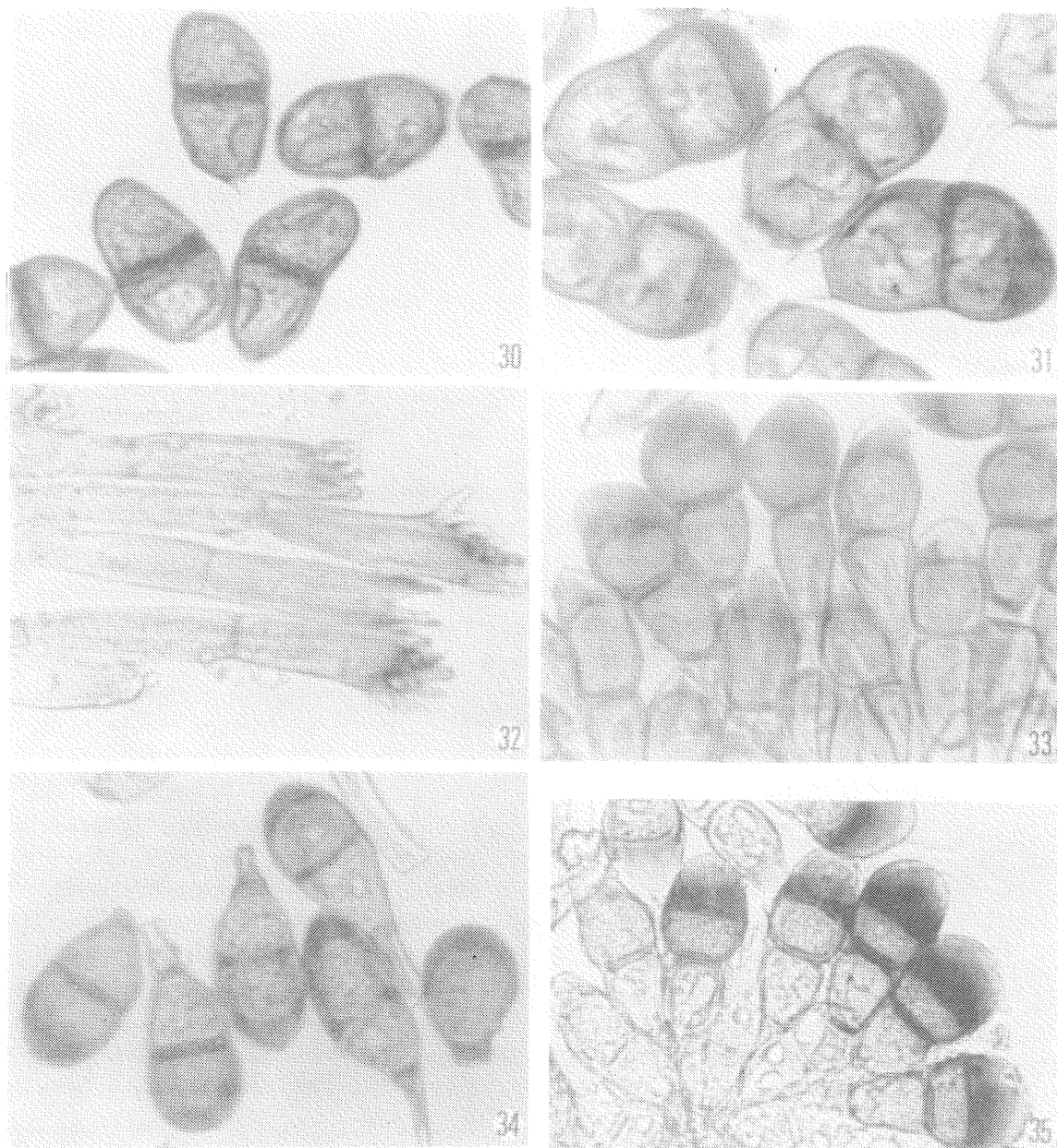


图30-35

- 30. *Puccinia bistortae* DC. (III, TS-R2455).
- 31. *Puccinia chrysanthemi* Roze (III, TS-R2162).
- 32. *Puccinia coronata* Corda (III, TS-R2193).
- 33. *Puccinia dieteliana* P. Sydow (III, TS-R3583).
- 34. *Puccinia graminis* Persoon (III, TS-R3778).
- 35. *Puccinia linosyridi-caricis* Ed. Fischer (III, TS-R211).

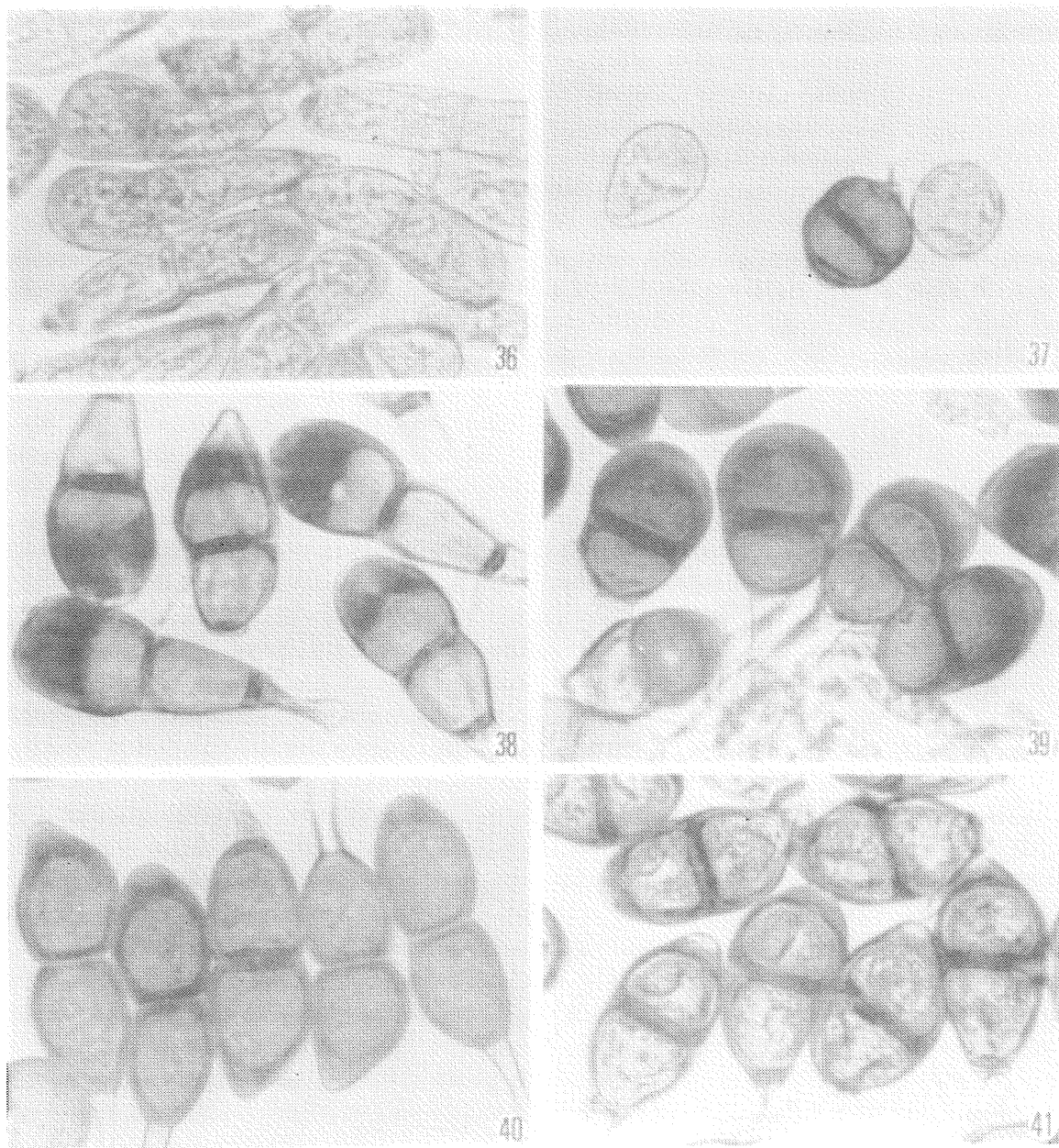


图36—41

36. *Puccinia majanthemi* Dietel (III, TS-R3725).
37. *Puccinia menthae* Persoon (II, III, TS-R2842).
38. *Puccinia metanarthezii* Patouillard (III, TS-R2502).
39. *Puccinia miyoshiana* Dietel (III, TS-R3811).
40. *Puccinia molinae* Tulasne (III, TS-R3824).
41. *Puccinia nanbuana* Hennings (III, TS-R2415).

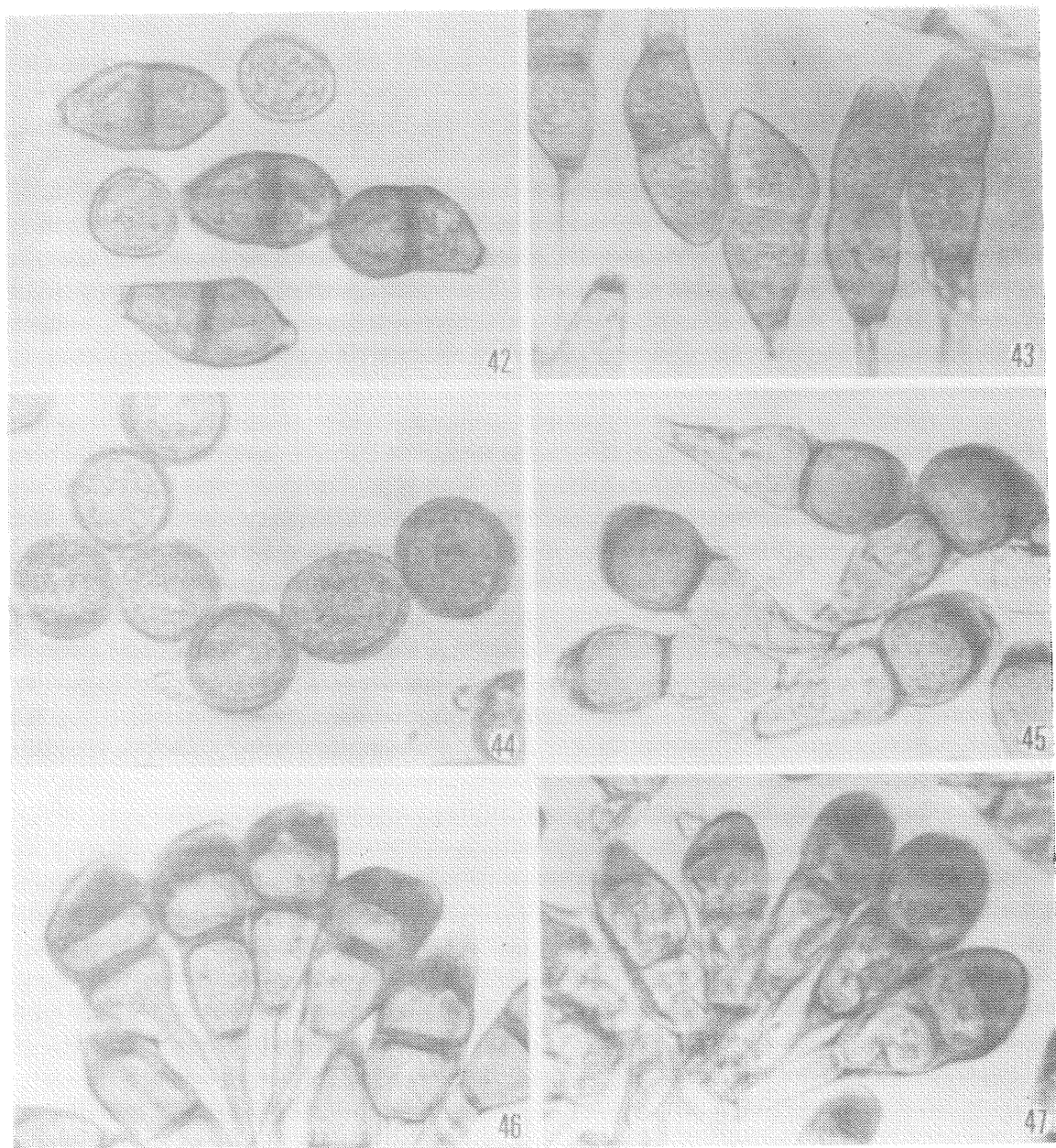


图42 - 47

- 42. *Puccinia nolitangeris* Corda (II, III, TS-R2994).
- 43. *Puccinia patriniae* Hennings (III, TS-R3702).
- 44. *Puccinia polygoni-amphibii* Persoon (II, TS-R3676).
- 45. *Puccinia polygoni-amphibii* Persoon (III, TS-R2503).
- 46. *Puccinia polygoni-amphibii* Persoon (III, TS-R2516).
- 47. *Puccinia punctata* Link (III, TS-R2459).

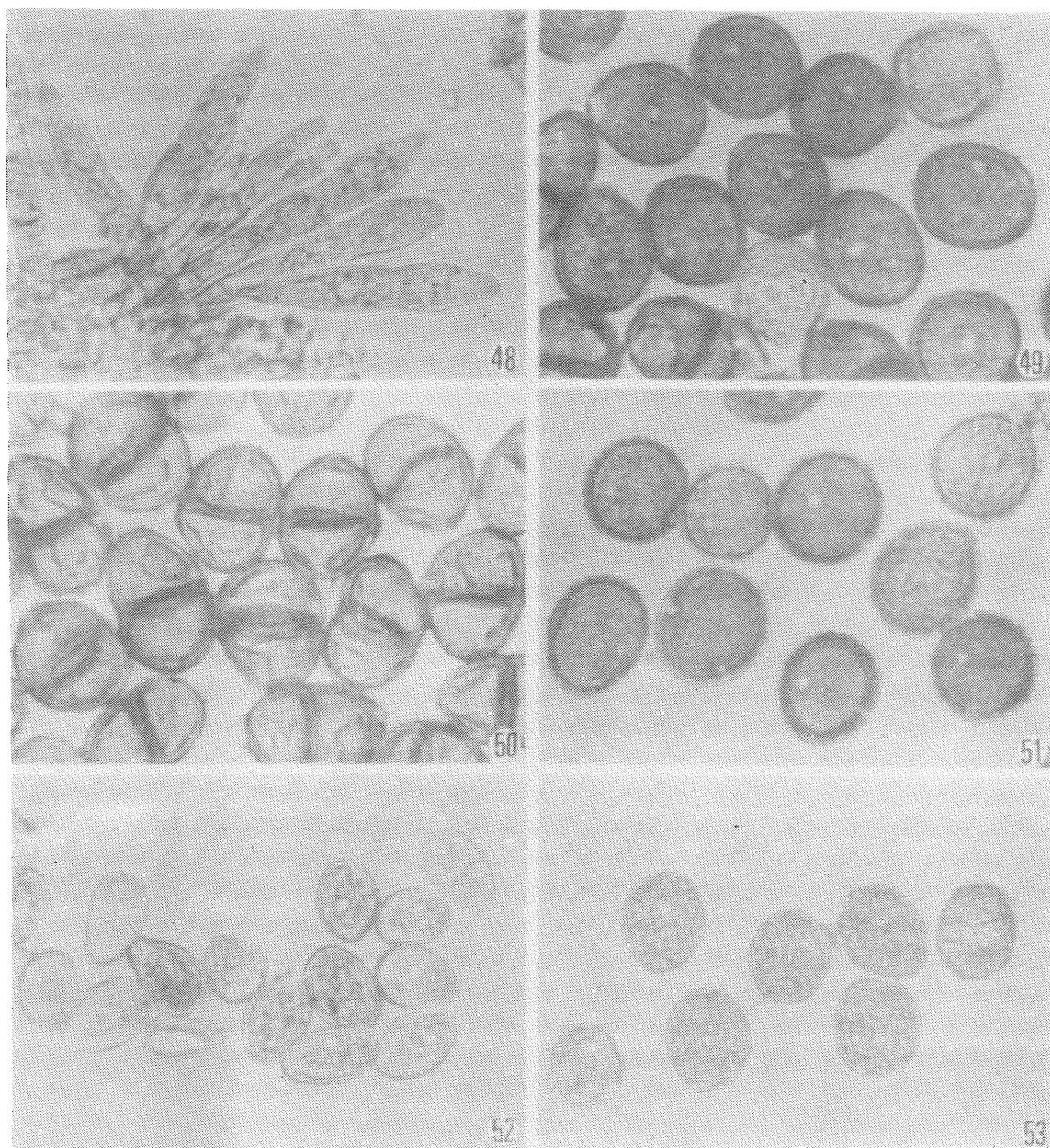


図48-53

48. *Puccinia togashiana* Hiratsuka, f. (III, TS-R3673).
49. *Puccinia violae* (Schum.) DC. (II, TS-R3693).
50. *Puccinia violae* (Schum.) DC. (III, TS-R3693).
51. *Uredo caricis-incisae* S. Ito (II, TS-R2770).
52. *Uredo iyoensis* Hiratsuka, f. et Yoshinaga (II, TS-R3750).
53. *Aecidium epimedii* Hennings et Shirai (I, TS-R3675).