

Cerebellar metastasis with the cavity of both components of lung adenosquamous cell carcinoma

著者 (英)	Ryota MASHIKO, Yasushi SHIBATA, Norio TAKAYASHIKI, Hiroaki SATOH
journal or publication title	Polish Archives of Internal Medicine
volume	128
number	1
page range	66-68
year	2018-01
権利	This is an Open Access article distributed under the terms of the Creative Commons Attribution?NonCommercial?ShareAlike 4.0 International (CC BY?NC?SA 4.0) License (https://creativecommons.org/licenses/by?nc?sa/4.0/), allowing third parties to copy and redistribute the material in any medium or format and to remix, transform, and build upon the material, provided the original work is properly cited, distributed under the same license, and used for noncommercial purposes only. For commercial use, please contact the journal office at pamw@mp.pl .
URL	http://hdl.handle.net/2241/00159837

doi: 10.20452/pamw.4184

Cerebellar metastasis with the cavity of both components of lung adenosquamous cell carcinoma

Ryota Mashiko¹, Yasushi Shibata¹, Norio Takayashiki², Hiroaki Satoh³

- 1 Division of Neurosurgery, Mito Medical Center, University of Tsukuba, Ibaraki, Japan
- 2 Division of Pathology, Mito Medical Center, University of Tsukuba, Ibaraki, Japan
- 3 Division of Respiratory Medicine, Mito Medical Center, University of Tsukuba, Ibaraki, Japan

A 72-year-old woman with no history of smoking presented to our hospital with dizziness for the past 3 weeks. Nine years earlier, she had hemoptysis, and a large tumor in the left lung was revealed by chest computed tomography (FIGURE 1A). The patient underwent a lobectomy of the left lower lung and mediastinal lymph node dissection. The resected tumor consisted of the components of adenocarcinoma as well as squamous cell carcinoma, each comprising more than 10% of the tumor. The final pathological diagnosis was lung adenosquamous cell carcinoma, and the tumor was staged as pT3bN1M1a according to the TNM classification.

The 2 components of the surgically resected tumor were precisely separated by manual microdissection under microscope to avoid contamination of each sample by different components. An epidermal growth factor receptor (EGFR) exon 19 deletion, but not the T790M mutation, was identified in both components. Thereafter, the patient developed several small cavitory metastases (<10 mm in size) in both lungs (FIGURE 1B). She was administered EGFR-tyrosine kinase inhibitors and cytotoxic chemotherapies (gefitinib for 23 months; 4 cycles of carboplatin, pemetrexed, and bevacizumab; 15 cycles of pemetrexed and bevacizumab for 15 months; afatinib for 13 months; and 17 cycles of docetaxel and bevacizumab for 15 months),

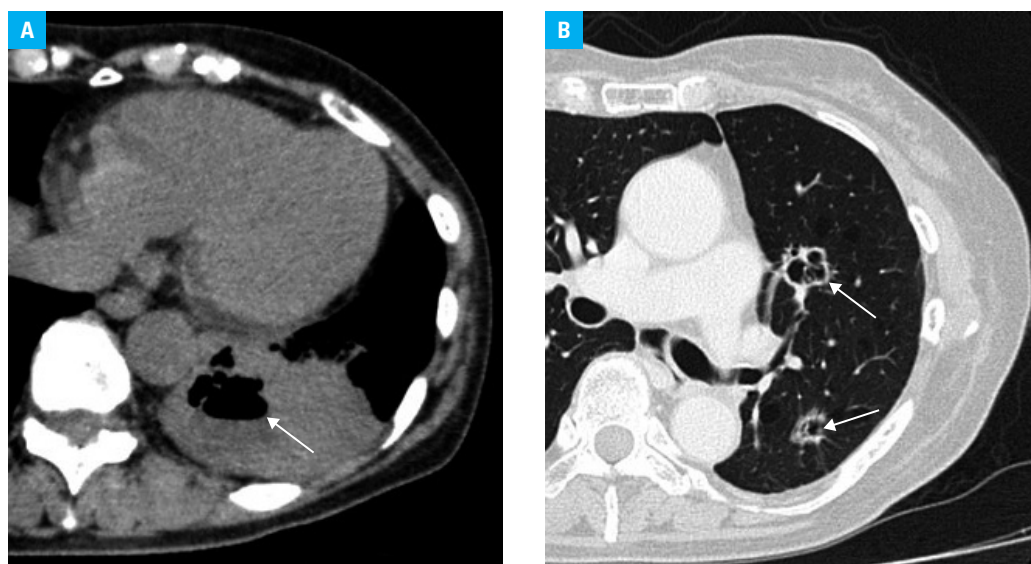


FIGURE 1 A – primary adenosquamous cell carcinoma with cavity (arrow) (axial contrast-enhanced chest computed tomography [CT] at the mediastinal window at the superior segment of the lower lobe of the left lung); B – pulmonary metastases with cavities (arrows) in the left upper lobe of the lung at the time of recurrence (axial CT at the lung window at the level of the lower lobe)

Correspondence to:
 Hiroaki Satoh, MD, PhD,
 Division of Respiratory Medicine,
 Mito Medical Center,
 University of Tsukuba,
 Miya-machi 3-2-7, Mito, 305-8575,
 Ibaraki, Japan,
 phone: +81 29 231 2371,
 email: hirosato@md.tsukuba.ac.jp
 Received: October 3, 2017.
 Revision accepted:
 December 7, 2017.
 Published online: January 19, 2018.
 Conflict of interests: none declared.
 Pol Arch Intern Med. 2018;
 128 (1): 66-68
 doi:10.20452/pamw.4184
 Copyright by Medycyna Praktyczna,
 Kraków 2018

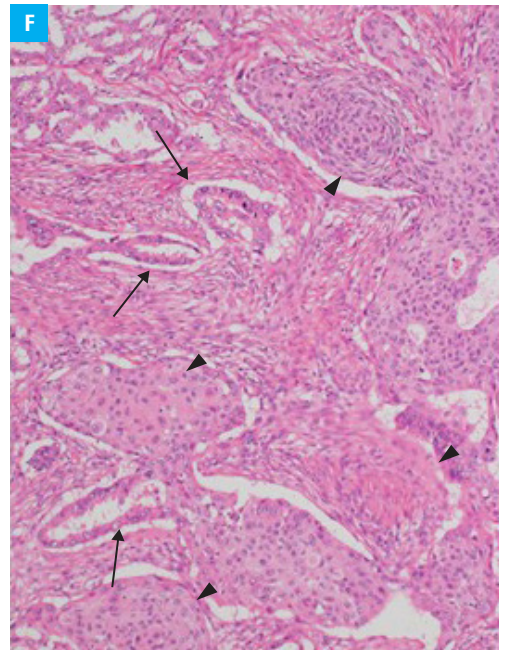
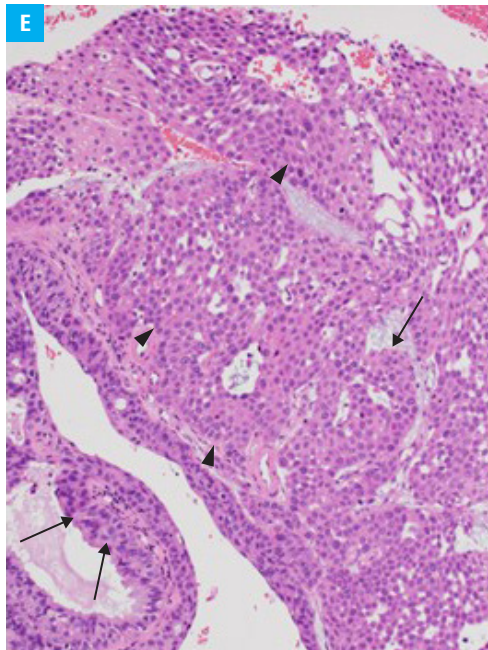
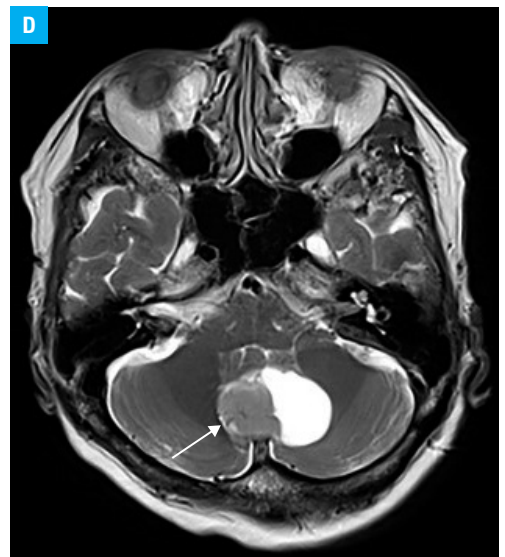
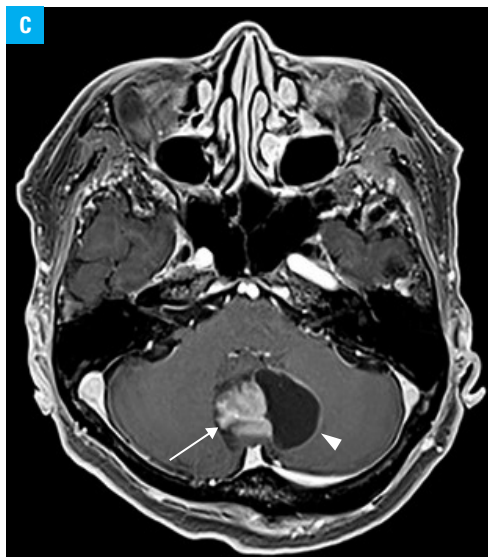
FIGURE 1

C – an enhanced solid mass (arrow) accompanying a cystic mass (arrowhead) in the cerebellar vermis (gadolinium-enhanced T1-weighted magnetic resonance imaging [MRI]); **D** – solid mass (arrow) with iso- to high-signal with no marked peritumoral edema (T2-weighted MRI);

E – cerebellar metastatic lesion (hematoxylin and eosin staining, $\times 200$);

F – primary lung lesion (hematoxylin and eosin staining, $\times 200$);

E, F – the tumor consisted of the components of adenocarcinoma (arrows) as well as squamous cell carcinoma (arrowheads).



and partial response of lung metastatic lesions was obtained with each treatment. However, 3 months after the termination of the last chemotherapy, the patient developed dizziness that lasted 3 weeks. Brain magnetic resonance imaging on admission showed an enhanced solid mass accompanying cavity lesion in the cerebellar vermis (FIGURE 1C and 1D). Excision of the metastatic lesion in a single surgical field was assessed as feasible, and metastectomy was performed with complete resection of the metastatic lesion. The resected tumor of the cerebellum exhibited adenocarcinomatous and squamous cell carcinomatous components. These pathological findings of the cerebellar tumor were found to be identical with those of the surgically resected specimen of the primary lesion (FIGURE 1E and 1F). An EGFR exon 19 deletion was identified, but the T790M mutation was not found. The patient received additional irradiation to the cerebellum. She has been administered a combination therapy of erlotinib and bevacizumab for 8 months, and her clinical condition is good.

Pulmonary adenosquamous carcinoma can form cavities.^{1,2} To our best knowledge, however, there has been no report on the formation of cavities in brain metastatic lesions in patients with pulmonary adenosquamous carcinoma. In our case, cavities found in the primary lesion and lung metastatic sites were also observed in brain metastatic lesions. As the features of the primary tumor may be preserved at the metastatic sites, cavities in brain metastases may occur in patients with adenosquamous cell carcinoma of the lung. In malignant tumors with 2 or more components, only one component often metastasizes.^{3,4} Adenosquamous carcinoma of the lung is a morphologically mixed type of tumor, including 2 cell components, adenocarcinoma and squamous cell carcinoma, in varying proportions, each representing 10% or more of the entire tumor.⁵ In our patient, the 2 components of adenocarcinoma and squamous cell carcinoma were confirmed pathologically. The history of the patient may support the concept that

tumor stem cells are involved in metastases. To the best of our knowledge, no such findings have been reported so far in patients with lung cancer.

OPEN ACCESS This is an Open Access article distributed under the terms of the Creative Commons Attribution-NonCommercial-ShareAlike 4.0 International (CC BY-NC-SA 4.0) License (<https://creativecommons.org/licenses/by-nc-sa/4.0/>), allowing third parties to copy and redistribute the material in any medium or format and to remix, transform, and build upon the material, provided the original work is properly cited, distributed under the same license, and used for noncommercial purposes only. For commercial use, please contact the journal office at pamw@mp.pl.

REFERENCES

- 1 Sugimoto Y, Semba H, Fujii S, et al. Clinical analysis of primary lung cancer with a thin-walled cavity to explain the mechanism of thin-walled cavity formation. *Nihon Kokyuki Gakkai Zasshi*. 2007; 45: 460-464.
- 2 Kobashi Y, Mouri K, Fukuda M, et al. A case of pulmonary adenosquamous cell carcinoma with thin-wall cavities. *Nihon Kokyuki Gakkai Zasshi*. 2005; 43: 59-62.
- 3 Ohtsuka M, Satoh H, Inoue M, et al. Disseminated metastasis of neuroblastomatous component in immature mediastinal teratoma: a case report. *Anticancer Res*. 2000; 20: 527-530.
- 4 Miyazaki K, Sato S, Kodama T, et al. Mediastinal lymph node metastasis of renal cell carcinoma: A case report. *Oncol Lett*. 2016; 11: 1600-1602. [↗](#)
- 5 Rao N. Adenosquamous carcinoma. *Semin Diagn Pathol*. 2014; 31: 271-277. [↗](#)