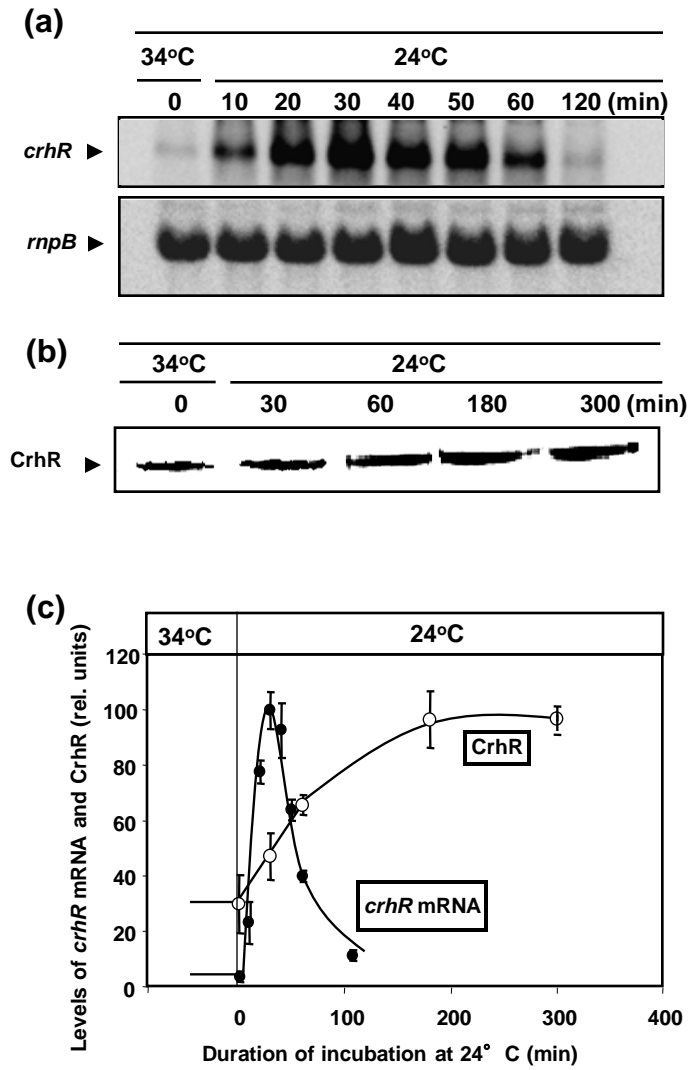
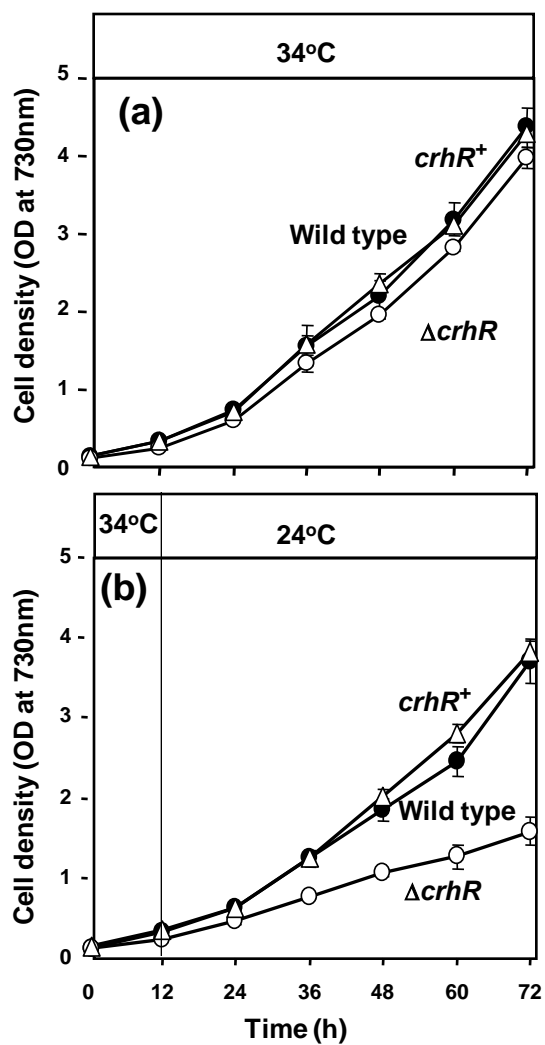


Fig.1



Prakash et al.  
Fig. 2



Prakash et al.  
Fig. 3

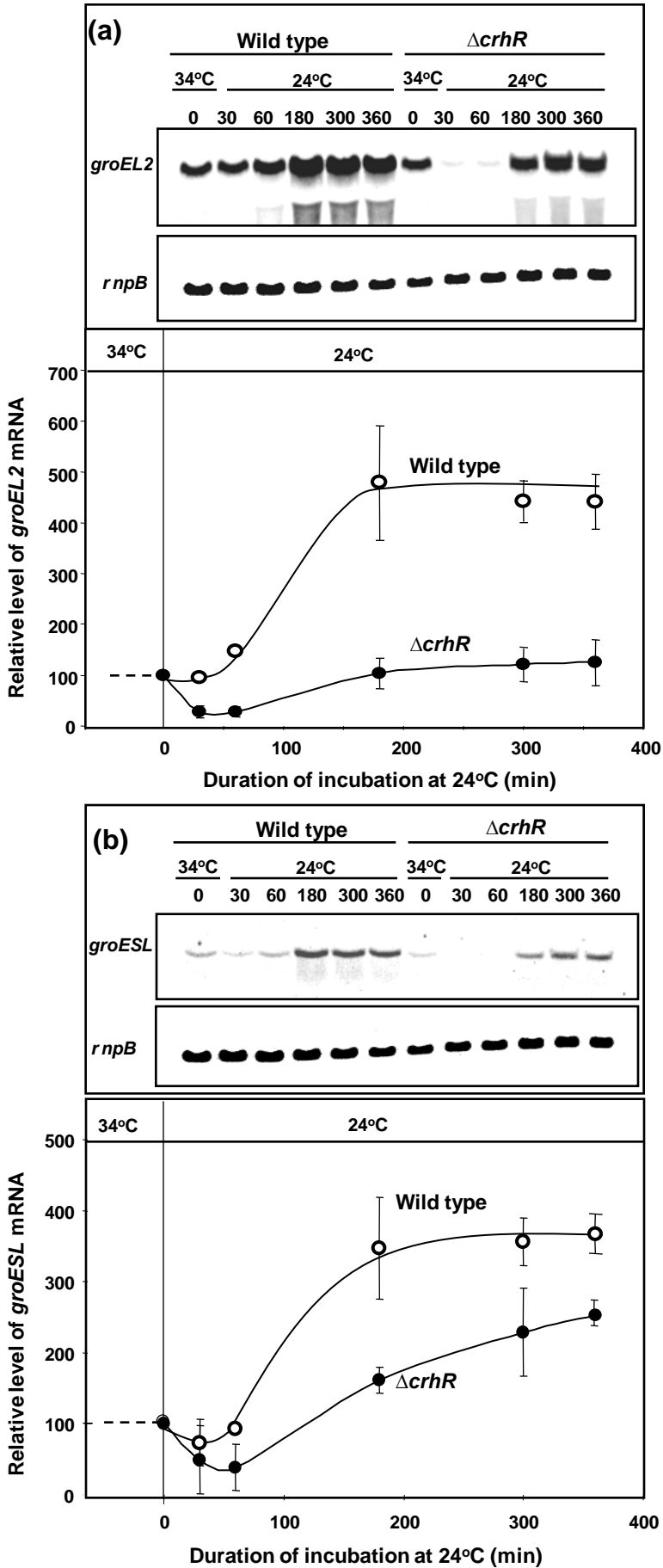
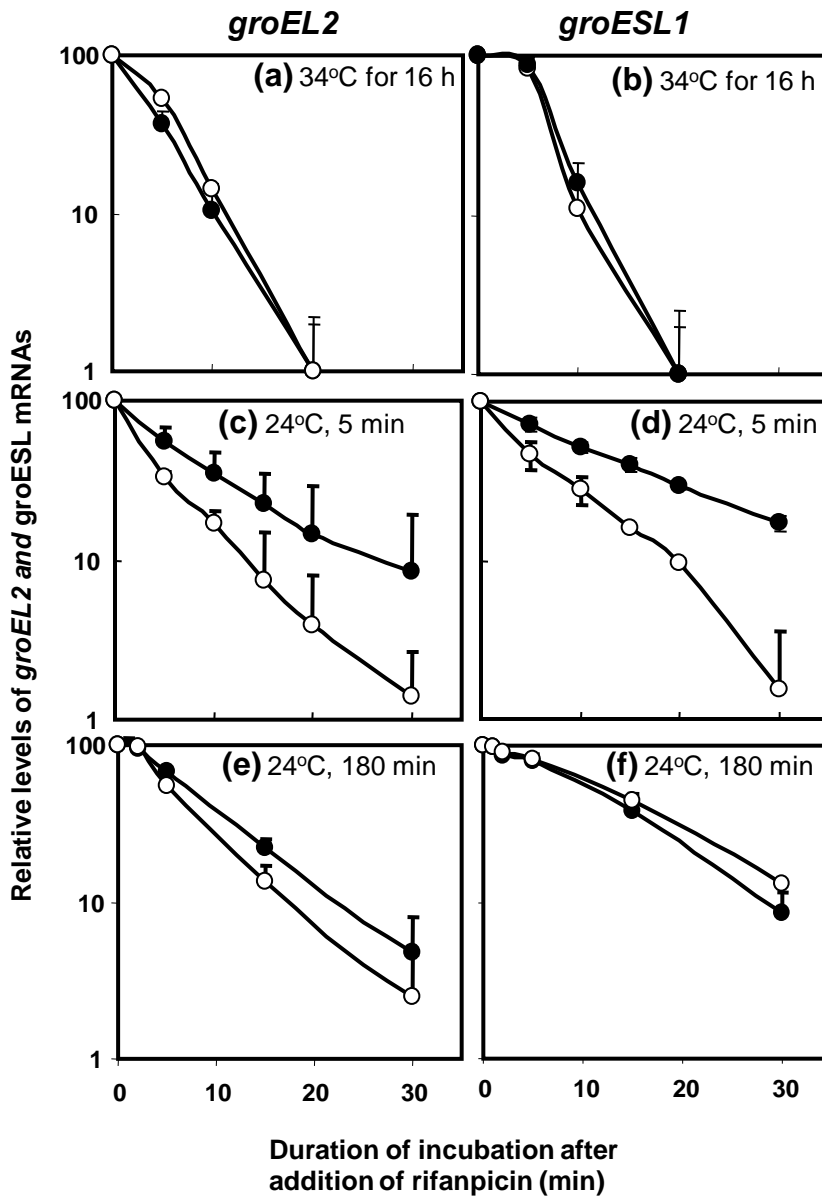
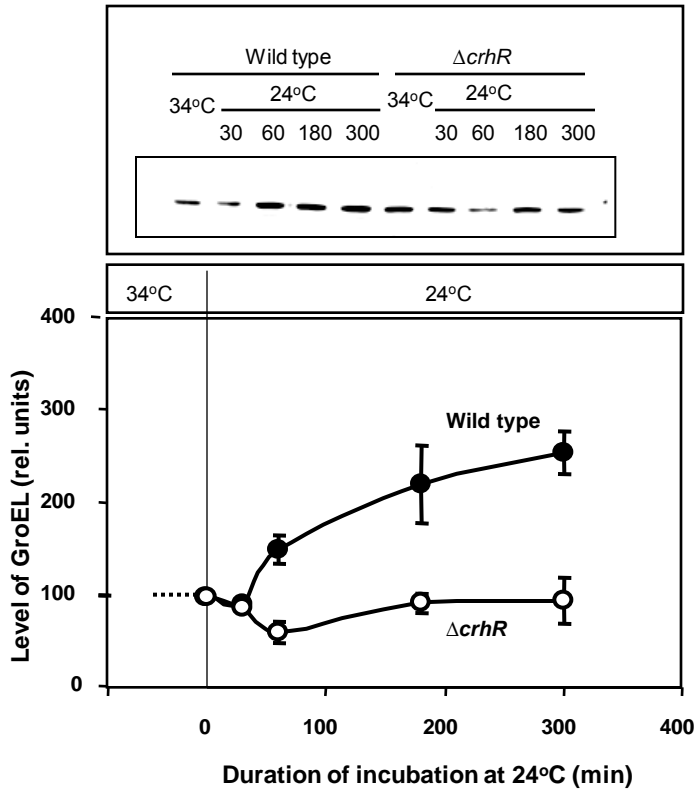


Fig. 4



Prakash et al.

Fig. 5



**Table 1.** Genes whose inducibility by low temperature was affected by the mutation in *ΔcrhR*

Wild-type and *ΔcrhR* cells were grown at 34 °C for 16 h and then incubated at 24 °C for 20, 60 and 180 min. Each value indicates the ratio of levels of the mRNA from cold-stressed cells to those from control cells. The values shown are the results of two independent experiments with the range of experimental deviations. The numbering of ORFs corresponds to that of Kaneko et al. (1996).

The complete list of gene expression in wild-type and *ΔcrhR* mutant can be accessed at

[http://www.genome.ad.jp/kegg-bin/get\\_htext?htext=Exp\\_DB&hier=1](http://www.genome.ad.jp/kegg-bin/get_htext?htext=Exp_DB&hier=1)

ORF no.	Gene	Product	24 °C / 34 °C						
			Wild-type cells			<i>ΔcrhR</i> cells			<i>crhR</i> <sup>+</sup> cells
			20 min	60 min	180 min	20 min	60 min	180min	180 min
Genes whose inducibility by low temperature was depressed by mutation of the <i>crhR</i> gene									
sl11611		Hypothetical protein	4.0±0.4	8.4 ±1.5	6.7 ±1.3	2.1±0.1	2.3 ±0.1	1.9±0.1	3.7±0.02
slr2076	<i>groEL1</i>	60 kDa chaperonin 1	0.6±0.0	0.7±0.0	4.4 ±1.2	0.2±0.0	0.2±0.0	1.8±0.2	3.5±0.12
sl10416	<i>groEL2</i>	60 kDa chaperonin 2	0.6±0.1	0.7±0.1	3.1±0.4	0.2±0.0	0.2±0.0	1.1±0.1	2.7±0.07
slr2075	<i>groES</i>	10 kDa chaperonin	0.5±0.1	0.5±0.0	3.9±1.0	0.2±0.0	0.2±0.0	1.6±0.5	2.9±0.12
Genes in whose inducibility by low temperature was enhanced by mutation of the <i>crhR</i> gene									
slr0082		Hypothetical protein	9.3±0.8	2.3±0.1	1.0±0.1	11.6±0.8	8.7±1.1	8.8±0.2	1.3±0.04
slr1476	<i>pyrB</i>	Aspartate carbomoyl transferase	1.9±0.2	1.5±0.1	1.4±0.4	4.1±0.9	3.8±0.9	3.7±1.1	1.2±0.16
ssl1911	<i>gifA</i>	Glutamine synthetase inactivating factor	1.3±0.7	0.9±0.3	0.4±0.2	2.4±0.3	3.1±0.6	2.3±0.7	1.5±0.01
sl11515	<i>gifB</i>	Glutamine synthetase inactivation factor	1.5±0.5	1.5±0.1	0.9±0.4	3.4±0.9	2.7±0.4	1.8±0.5	2.2±0.08