

Figure

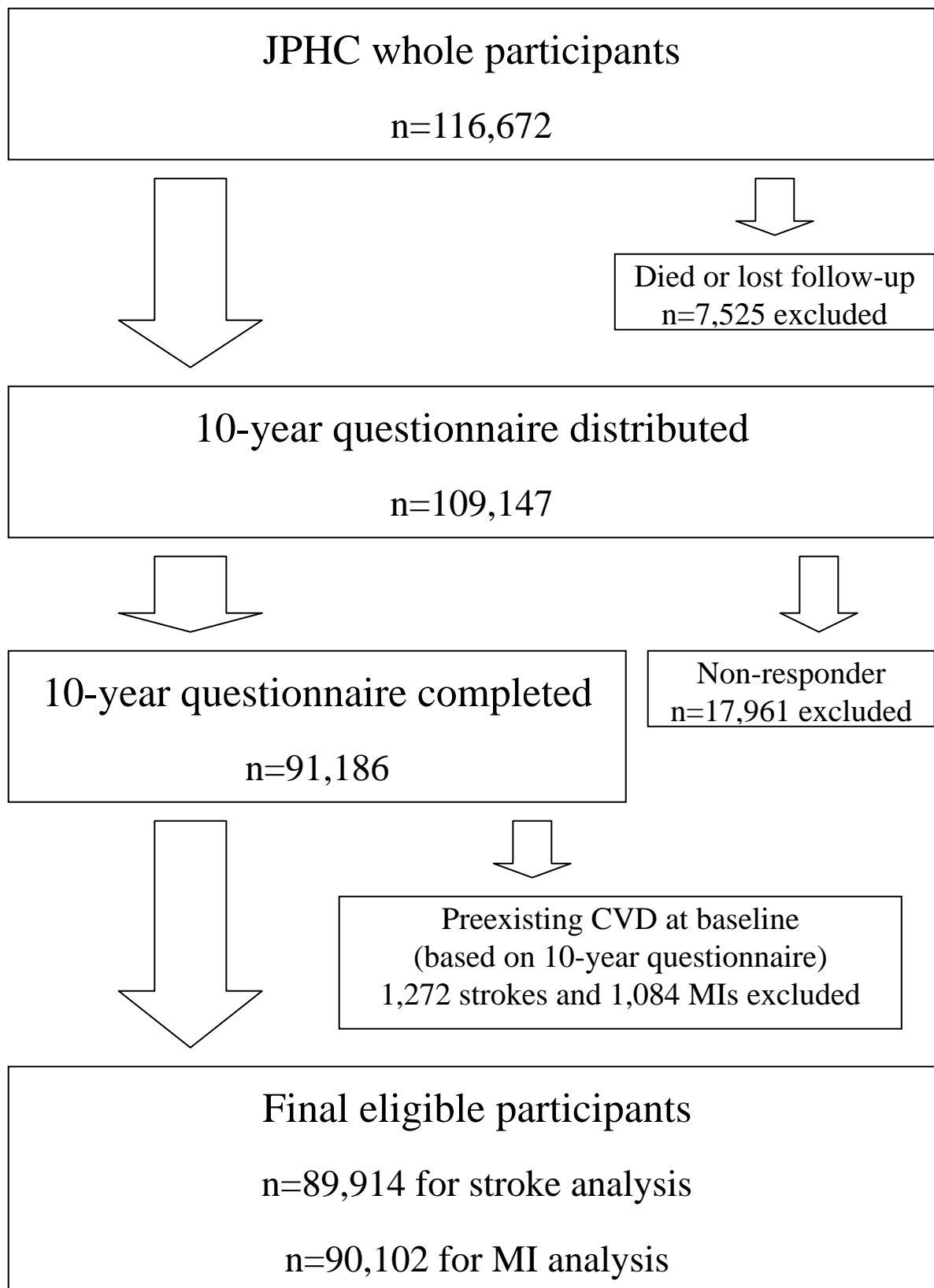


Table 1. Sensitivity and positive predictive values for self-reported cardiovascular diseases, JPHC Study Cohorts I and II, Japan

	No of registry	No. of self-report	No. of true-positive cases	Sensitivity	Positive Predictive Value
Total					
Stroke	1,447	1,848	1,051	73 (70-75) %	57 (55-59) %
Myocardial infarction	342	650	281	82 (78-86) %	43 (39-47) %
Myocardial infarction/Angina pectoris*	342	1,651	305	89 (86-92) %	18 (17-20) %
Men					
Stroke	912	1,152	671	74 (71-76) %	58 (55-61) %
Myocardial infarction	266	476	222	83 (79-88) %	47 (42-51) %
Myocardial infarction/Angina pectoris*	266	1,036	241	91 (87-94) %	23 (21-26) %
Women					
Stroke	535	696	380	71 (67-75) %	55 (51-58) %
Myocardial infarction	76	174	59	78 (68-87) %	34 (27-41) %
Myocardial infarction/Angina pectoris*	76	615	64	84 (76-92) %	10 (8-13) %
Ages <65 at the baseline					
Stroke	583	753	454	78 (75-81) %	60 (57-64) %
Myocardial infarction	162	281	141	87 (82-92) %	50 (44-56) %
Myocardial infarction/Angina pectoris*	162	723	150	93 (89-97) %	21 (18-24) %
Ages ≥65 at the baseline					
Stroke	864	1,095	597	69 (66-72) %	55 (52-57) %

Myocardial infarction	180	369	140	78 (72-84) %	38 (33-43) %
Myocardial infarction/Angina pectoris*	180	928	155	86 (81-91) %	17 (14-19) %
Incident within 5 years**					
Stroke	935	1,848	681	73 (70-76) %	-
Myocardial infarction	216	650	179	83 (78-88) %	-
Myocardial infarction/Angina pectoris*	216	1,651	190	88 (84-92) %	-
Incident 6-10 years ago**					
Stroke	512	1,848	370	72 (68-76) %	-
Myocardial infarction	126	650	102	81 (74-88) %	-
Myocardial infarction/Angina pectoris*	126	1,651	115	91 (86-96) %	-

* Using the questionnaire data on myocardial infarction and angina pectoris to identify incident myocardial infarction

** Self-report on the incidence during 10 years were used. Positive predictive values were therefore not calculated.

Table 2. Sensitivity of self-reported stroke according to subtypes, affected site and size, among responders of 10-year questionnaire, JPHC Study Cohorts I and II, 1990-2003.

	Numbers		Sensitivity (95%CI)
	registry	true-positive	
Intraparenchymal hemorrhage	426	316	74 (70-78) %
stratified by affected site			
- subcortical	61	39	64 (52-76) %
- putamen/internal capsule/basal ganglia	169	126	75 (68-81) %
- thalamus	131	103	79 (72-86) %
- cerebellum	35	26	74 (60-89) %
- brain stem	18	12	67 (45-88) %
- multiple foci	5	5	100 (100-100) %
stratified by size			
- less than 2 cm	115	77	67 (58-76) %
- 2 cm or more	285	221	78 (73-82) %
Subarachnoid hemorrhage	170	149	88 (83-93) %
Cerebral infarction	842	582	69 (66-72) %
- Thrombotic infarction	519	372	72 (68-76) %
- Embolic infarction	157	102	65 (58-72) %
stratified by affected site			
- cortical/subcortical	140	98	70 (62-78) %
- cortical and perforator	56	43	77 (66-88) %
- perforator	292	201	69 (64-74) %
- thalamus	28	21	75 (59-91) %
- cerebellum	46	29	63 (49-77) %
- brain stem	104	74	71 (62-80) %
- multiple foci	86	56	65 (55-75) %
- no apparent lesions	19	15	79 (61-97) %
Stratified by size			
- less than 1.5 cm	456	308	68 (63-72) %
- 1.5 cm or more	251	184	73 (68-79) %

APPENDIX The 10-year questionnaire for history of cardiovascular diseases.

Have you ever been told by a physician(s) that you had any of the following diseases or operations? Please mark all applicable items for approximate date of diagnosis.

CARDIOVASCULAR DISEASE

	First diagnosis		
(for cohort I)	Before 1990	1990-1994	1995 or later
(for cohort II)	Before 1993	1993-1997	1998 or later
Stroke (cerebral hemorrhage, cerebral infarction or subarachnoid hemorrhage)	<input type="checkbox"/>	<input type="checkbox"/>	<input type="checkbox"/>
Myocardial infarction	<input type="checkbox"/>	<input type="checkbox"/>	<input type="checkbox"/>
Angina pectoris	<input type="checkbox"/>	<input type="checkbox"/>	<input type="checkbox"/>