

RESEARCH ARTICLE

Open Access



Reducing the risk of impaired bone apposition to titanium screws with the use of fibroblast growth factor-2–apatite composite layer coating

Kengo Fujii¹, Atsuo Ito^{2*}, Hirotaka Mutsuzaki³, Shinji Murai¹, Yu Sogo², Yuki Hara¹ and Masashi Yamazaki¹

Abstract

Background: Loosening of screws is a common problem in orthopedic and maxillofacial surgery. Modifying the implant surface to improve the mechanical strength of screws has been tried and reported. We developed screws coated with fibroblast growth factor-2 (FGF-2)–apatite composite layers. We then showed, in a percutaneous external fixation model, that this composite layer had the ability to hold and release FGF-2 slowly, thereby reducing the risk of pin tract infection of the percutaneous external fixation. The objective of the current study was to clarify the effect of FGF-2–apatite composite layers on titanium screws on bone formation around the screw.

Methods: We analyzed samples of previously performed animal experiments. The screws were coated with FGF-2–apatite composite layers by immersing them in supersaturated calcium phosphate solutions containing FGF-2. Then, the uncoated, apatite-coated, and FGF-2–apatite composite layer-coated screws were implanted percutaneously in rabbits. Finally, using inflammation-free histological sections, we histomorphometrically assessed them for the presence of bone formation. Weibull plot analysis was then applied to the data.

Results: On average, screws coated with FGF-2–apatite composite layers showed a significantly higher bone apposition rate than the uncoated or apatite-coated screws. Although the difference in the average bone apposition rate was small, the FGF-2–apatite composite layers produced a significant, marked reduction in the incidence of impaired bone formation around the screw compared with the incidence in the absence of FGF-2 (uncoated and apatite-coated screws). The probability of resulting in a bone apposition rate equal to or less than 63.75%, for example, is 3.5×10^{-4} for screws coated with the FGF-2–apatite composite layers versus 0.05 for screws in the absence of FGF-2.

Conclusions: FGF-2–apatite composite layer coating significantly reduced the risk of impaired bone apposition to the screw. Thus, it is feasible to use titanium screws coated with FGF-2–apatite composite layers as internal fixation screws to decrease the risk of loosening.

Keywords: Fibroblast growth factor-2 (FGF-2), Apatite, Coating, Titanium screw, Bone formation, Weibull plot analysis, Impaired bone formation risk

* Correspondence: atsuo-ito@aist.go.jp

²Health Research Institute, National Institute of Advanced Industrial Science and Technology (AIST), Central 6, 1-1-1 Higashi, Tsukuba, Ibaraki 305-8566, Japan

Full list of author information is available at the end of the article



© The Author(s). 2017 **Open Access** This article is distributed under the terms of the Creative Commons Attribution 4.0 International License (<http://creativecommons.org/licenses/by/4.0/>), which permits unrestricted use, distribution, and reproduction in any medium, provided you give appropriate credit to the original author(s) and the source, provide a link to the Creative Commons license, and indicate if changes were made. The Creative Commons Public Domain Dedication waiver (<http://creativecommons.org/publicdomain/zero/1.0/>) applies to the data made available in this article, unless otherwise stated.

Background

Loosening of screws is a severe clinical problem in orthopedic and maxillofacial surgery, and it could be exacerbated in patients with compromised bone quality [1–3]. Screw loosening leads to unfavorable clinical results, including incomplete healing of a bone fracture and delayed union of spinal fusion. To prevent screw loosening, a variety of improvements and developments have been achieved in the surgical techniques for screw insertion and in the screw materials, design, and surface [4, 5].

The improved screw surface is considered a promising solution strategy. Such improvement includes surface modifications to enhance biocompatibility and osteoconductivity with the use of calcium phosphates, TiO_2 –strontium– CaSiO_3 –biopolymer composite, acid-etching, zinc-modified Ca–Si ceramic, and CaTiSiO_5 ceramic [5–12]. Moreover, biologically active molecules such as fibroblast growth factor-2 (FGF-2), bone morphogenetic proteins (BMP), collagen, fibronectin, 1,25-vitamin D_3 , semaphorin 3A, and bisphosphonate are combined with the surface or incorporated into osteoconductive coatings [11, 13–20].

Screws coated with FGF-2–apatite composite layers are promising. FGF-2 regulates the proliferation and differentiation of osteoblasts and fibroblasts, and it promotes bone formation in appropriate doses [21–24]. Apatite is an osteoconductive material that is widely used in orthopedic and maxillofacial surgery [5–7]. The FGF-2–apatite composite layers form during immersion of the screws in infusion fluid-based supersaturated calcium phosphate solutions containing FGF-2 [13, 25, 26]. FGF-2 co-precipitates with calcium phosphate and consequently can be incorporated into the apatite layer. The FGF-2–apatite composite layer retains FGF-2 molecules, which are detectable by the enzyme-linked immunosorbent assay, in the layer for 16 days in Dulbecco's modified Eagle's medium at 37 °C [23]. Titanium external fixation screws coated with an FGF-2–apatite composite layer showed significantly higher bone–screw interface strength than those without the composite layer, owing to the osteoconductive nature of apatite in a percutaneous implantation model [25]. The FGF-2–apatite composite layer reduced the screw-tract infection rate through enhanced skin tissue healing [25]. Screw-tract infection greatly contributes to titanium screw loosening because an infection at the screw–skin interface evokes inflammation that, in turn, causes impaired bone formation around, and bone apposition to, the screws. In the case of internal fixation, however, infection-mediated loosening is hardly plausible because the entire fixation screw is present underneath the skin. Loosening of the internal screws depends solely on bone formation and apposition. Although we showed in a previous study that an FGF-2–apatite composite layer with a low dose of FGF-2 resulted in increased bone formation over an

apatite layer in a rat cranial bone defect model, this result is insufficiently relevant to the feasibility of internal fixation screws coated with an FGF-2–apatite composite layer [23].

The purpose of the present study was to evaluate the feasibility of applying the FGF-2–apatite composite layer to internal fixation screws by evaluating bone formation around the screws. We retrospectively analyzed bone formation around the screws on all of the inflammation-free histological sections obtained previously by percutaneous implantation of titanium external fixation screws coated with FGF-2–apatite composite layers. Bone apposition to the screw and the comparative risk of impaired bone formation were assessed.

The risk of impaired bone formation was evaluated using the Weibull plot analysis, which is used to analyze the lifetime, failure probability, and/or reliability of industrial products [27]. In the present study, impaired bone formation around the screw was regarded as *failure* of the treatment. The Weibull plot analysis was therefore used to determine the probability of failure. Theoretically, the Weibull plot provides a straight line. The greater the slope of the line, the more constant is the outcome of the treatment and the lower the probability of failure.

Methods

Preparation of implants

The screws employed in the present study were commercially available. Composed of gamma ray-sterilized titanium (4.0 mm diameter, 30 mm long), they were cancellous screws (#407-030; Synthes Inc., West Chester, PA, USA) with an anodically oxidized surface. Under sterile conditions, the screws were immersed in 10 mL of infusion fluid-based supersaturated calcium phosphate solutions containing FGF-2, as described elsewhere [24, 25, 28, 29].

Briefly, supersaturated calcium phosphate solutions were prepared by mixing clinically available infusions and injection fluids. A Ca solution (Ca^{2+} 8.92 mM) was prepared from Ringer's solution (Ca^{2+} 2.25 mM) (Otsuka Pharmaceuticals Co., Ltd., Tokyo, Japan) and calcium chloride corrective injection 1 mEq/mL (Ca^{2+} 500 mM) (Otsuka Pharmaceuticals). A phosphate solution (PO_4^{3-} 2.97 mM) was prepared from Klinisalz® (PO_4^{3-} 10 mM) (I'rom Pharmaceuticals Co., Ltd., Tokyo, Japan) and dipotassium phosphate corrective injection (1 mEq/mL, PO_4^{3-} 500 mM) (Otsuka Pharmaceuticals). An FGF-2 solution (100 µg/mL) was prepared by dissolving FGF-2 (Fiblast®; Kaken Pharmaceutical Co., Ltd., Tokyo, Japan) in the Ca solution. Meylon® (NaHCO_3 833 mM) (Otsuka Pharmaceuticals) was used as an alkalizer. Supersaturated calcium phosphate solutions containing FGF-2 (0, 0.5, 1.0, or 2.0 µg/mL) were prepared from these four solutions.

The titanium screws were immersed in the supersaturated calcium phosphate solutions containing FGF-2 at 25 °C for 1 day to co-precipitate apatite with FGF-2. The prepared titanium screws coated with FGF-2-apatite composite layers were abbreviated as 25F0, 25F0.5, 25F1, and 25F2.

Another supersaturated calcium phosphate solution containing FGF-2 (4.0 µg/mL) was prepared in the same manner for immersing titanium screws at 37 °C for 2 days [25]. Instead of Meylon, Bifil® (NaHCO₃ 166 mM) (Ajinomoto Pharmaceuticals Co., Ltd., Tokyo, Japan) was used as an alkalizer. The obtained titanium screws coated with FGF-2-apatite composite layers are abbreviated as 37F4. Uncoated titanium screws are labeled as Ti. The combination of 25F0.5, 25F1, 25F2, and 37F4 is abbreviated as FGF(+), and that of the Ti and 25F0 is abbreviated as FGF(-). The chemical compositions of the supersaturated calcium phosphate solutions are summarized in Table 1.

Characteristics of the FGF-2-apatite composite layers are summarized in Table 2 [24, 29]. The apatite phases of all the layers, which are poorly crystallized, have similar chemical compositions except for the significantly higher Ca/P molar ratio associated with 37F4. The amounts of FGF-2 in the layers obtained by the Bradford method are similar, except for a significantly lower value associated with 25F0.5. The mitogenic activity of the loaded FGF-2 measured by NIH3T3 cell proliferation is also similar, except for a significantly lower value associated with 25F0.5. A typical value of the layer thickness 25F0 was estimated to be 2.9 µm using a CCD laser micrometer.

Table 1 Chemical compositions of the supersaturated calcium phosphate solutions

	Titanium screws	
	25F0, 25F0.5, 25F1, 25F2	37F4
Immersing condition		
Temperature	25 °C	37 °C
Duration	1 day	2 days
Ionic concentration (mM)		
Na ⁺	147.23	138.87
K ⁺	9.92	7.39
Ca ²⁺	8.92	3.67
Mg ²⁺	0.24	0.22
Cl ⁻	153.46	134.39
H ₂ PO ₄ ⁻	0.95	0.90
HPO ₄ ²⁻	2.02	0.94
HCO ₃ ⁻	15.09	15.09
CH ₃ COO ⁻	1.90	1.80
Xylitol	31.65	29.93
FGF-2 concentration (µg/mL)	0, 0.5, 1.0, and 2.0	4.0

Animal experiments

All of the inflammation-free histological sections were selected from those obtained previously by percutaneous implantation of 25F0 (*n* = 20), 25F0.5 (*n* = 20), 25F1 (*n* = 20), 25F2 (*n* = 20), 37F4 (*n* = 20), and uncoated titanium (Ti, *n* = 40) screws for 4 weeks in 70 male, 14-week-old Japanese white rabbits (weight range 2.5–3.0 kg) [24, 25, 28]. Wet and rinsed 25F0, 25F0.5, 25F1, 25F2, and 37F4 screws immediately after finishing the immersion were used for the animal experiments. A single physician, who was blinded to the screw identification, performed the operations. After intravenous injection of barbiturate (40 mg/kg body weight), the screws were implanted in both medial proximal tibiae in a direction perpendicular to the tibial shaft axis. First, a small incision (10 mm) was made on the skin, and a perforation 2.5 mm in diameter in both tibial metaphyses. After implantation, the skin was sutured bilaterally to the screw. Postoperatively, each rabbit was allowed to behave freely in its own cage. The rabbits did not receive any antibiotics or treatment for their wounds and were sacrificed 4 weeks after the operation.

The screws were then extracted. The proximal tibial metaphyses were fixed in 10% neutral-buffered formalin for 7 days and then separated into soft-tissue and hard-tissue parts. The hard-tissue parts were decalcified in an ethylenediaminetetraacetic acid solution and embedded in paraffin. The embedded samples were sliced in 5-µm-thick sections that were perpendicular to the tibial longitudinal axis and parallel to the screw hole. The sections were stained with hematoxylin-eosin.

Histomorphological measurements

The histological sections were randomized and blinded to the screw identification. Two other physicians analyzed the sections independently. Sections with poor conditions as a result of deformation and damage were eliminated from the analysis. A section was considered inflammation-free when both physicians judged that no sign of inflammation was visible. A total of 67 sections from 50 rabbits were identified as inflammation-free. The numbers of inflammation-free sections were 22, 10, 5, 7, 11, and 12 for titanium screws Ti, 25F0, 25F0.5, 25F1, 25F2, and 37F4, respectively.

Using the inflammation-free sections, the length of bone-screw interface line where the bone is in direct contact with the screw, the length of the peripheral line of the screw, and the bone apposition to the screw were determined in the cortex and medullary cavity. The bone apposition rate (%) was defined as follows (Fig. 1):

Bone apposition rate (%) = (total length of the bone-screw interface line where the bone is in direct contact with the screw)/(full-length of the peripheral line of the screw in the section).

Table 2 Characteristics of the FGF-2-apatite composite layers

	25F0	25F0.5	25F1	25F2	37F4
Ca (μg/screw)	137.7 ± 6.1	114.5 ± 17.2	149.3 ± 22.7	166.2 ± 35.9	143.4 ± 60.9
P (μg/screw)	73.9 ± 3.1	57.3 ± 8.6	73.9 ± 11.0	82.0 ± 17.4	65.2 ± 25.6
Ca/P molar ratio	1.40-1.44	1.55 ± 0.02	1.56 ± 0.01	1.56 ± 0.02	1.67 ± 0.11*
Calcium phosphate phase	Poorly crystallized apatite				
FGF-2 (μg/screw)	–	2.04 ± 1.18*	3.97 ± 1.14	4.62 ± 0.86	4.72 ± 1.91
FGF-2 activity (×10 ³ cells)	–	16.3 ± 2.0*	23.8 ± 4.7	37.2 ± 7.4	31.1 ± 13.2

* $p < 0.05$

The length of the bone–screw interface line and the screw’s peripheral line was determined at a magnification of ×12.5 using a Vanox-T microscope (Olympus Optical Co., Ltd., Tokyo, Japan) equipped with a CCD video camera system (DP80; Olympus Optical Co., Ltd., Tokyo, Japan) with the use of Image J software (National Institutes of Health, Bethesda, MD, USA).

Weibull plot analysis

The bone apposition rate was analyzed using the Weibull plot analysis [27], according to the following Weibull equation:

$$\ln \ln [1/(1-S)] = m \ln \sigma - m \ln \xi,$$

where S , m , σ , and ξ indicate the failure probability, Weibull parameter, a measure that gives the failure probability, and a scale parameter, respectively. Thus, the plot of $\ln \sigma$ against $\ln \ln [1/(1-S)]$ gives a straight line with a slope of m . In this study, σ is the bone apposition rate, and S is the probability of resulting in a bone apposition rate at or less than σ . The measured σ values

were arranged in ascending order. S was derived from the average rank method using $S_j = j/(N+1)$, where j is an order number of an individual σ value, and N is the total number of measured σ values.

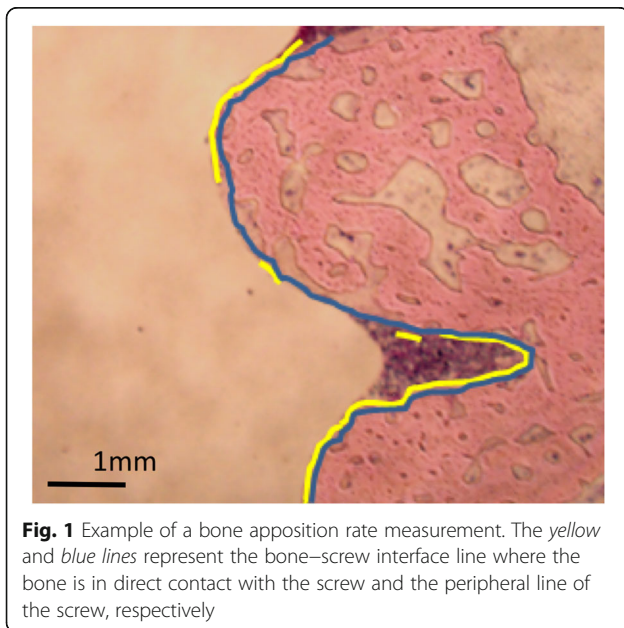
Statistical analysis

Student’s t test was used to test statistically significant differences in the length of the bone–screw interface line, the screw’s peripheral line, the bone apposition rate and the slope of the regression line of the Weibull plot. The F test was used to test a statistically significant difference in dispersion in the frequency histogram. A value of $p < 0.05$ was considered to indicate statistical significance for each analysis.

Results

The bone apposition rate was significantly higher for FGF(+) ($88.6 \pm 4.4\%$) than for FGF(–) ($83.0 \pm 9.5\%$) ($p = 0.017$) (Fig. 2). The bone–screw interface line was significantly longer for FGF(+) (43.5 ± 7.8 mm) than for FGF(–) (38.9 ± 9.2 mm) ($p = 0.03$) while there was no significant difference in the length of screw’s peripheral line between FGF(+) (49.2 ± 9.4 mm) and FGF(–) (46.8 ± 10.1 mm) ($p = 0.30$) (Table 3). The frequency distribution of the bone apposition rate for FGF(+) was very narrow and nearly symmetrical, with all of the values being $>75\%$ (Fig. 3). In contrast, the frequency distribution of the bone apposition rate for FGF(–) was broad and apparently asymmetrical, with one-fourth of the values being $<75\%$. The frequency distribution was significantly broader for FGF(–) than for FGF(+) ($p < 0.0001$). Thus, qualitatively, the FGF(+) group resulted in a lower incidence of impaired bone formation around screws than the FGF(–) group.

We used Weibull plot analysis to analyze the risk of impaired bone formation quantitatively (Fig. 4). The Weibull plot was linear for both FGF(+) and FGF(–). The slope of the regression line was significantly higher for FGF(+) (22.6) than for FGF(–) (9.42) ($p = 7.3 \times 10^{-34}$). Using the regression lines, the risk of impaired bone formation was calculated at some threshold values of bone apposition rate which were selected in an arbitrary manner (Table 4). For example, if impaired bone



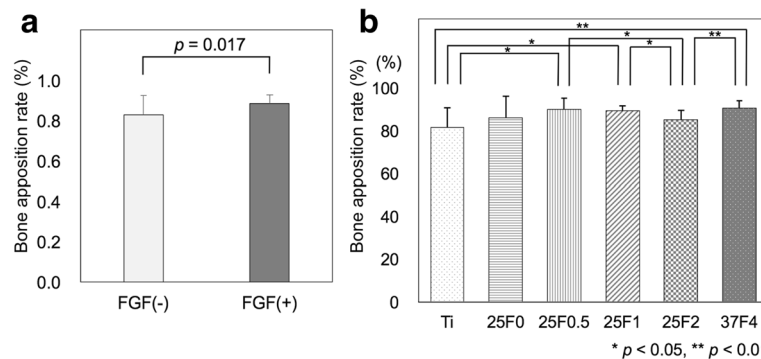


Fig. 2 Bone apposition rate for FGF(+) and FGF(-) (a), and for titanium screws Ti, 25F0, 25F0.5, 25F1, 25F2, and 37F4 (b). The data shown are means \pm SD. The combination of 25F0.5, 25F1, 25F2, and 37F4 is abbreviated as FGF(+), and the combination of Ti and 25F0 is abbreviated as FGF(-)

formation is defined as a state at $\leq 63.75\%$ of the bone apposition rate, the probabilities of impaired bone formation are 3.5×10^{-4} and 0.05 for FGF(+) and FGF(-), respectively. In the same manner, if impaired bone formation is defined as a state at $\leq 68.82\%$ of the bone apposition rate, the probabilities of impaired bone formation are 0.002 and 0.1 for FGF(+) and FGF(-), respectively. Thus, the risk of impaired bone formation is remarkably lower for FGF(+) than for FGF(-).

Discussion

FGF(+) had a significantly higher bone apposition rate and lower incidence of impaired bone formation around the screws than FGF(-) in inflammation-free histological sections obtained by percutaneous implantation of external fixation screws. Because there were individual differences in bone-forming ability among the animals with an implanted screw, we recorded and compared the ranges of the bone apposition rates for the FGF(+) and FGF(-) groups (Fig. 3).

The average bone apposition rate was only slightly higher for FGF(+) than for FGF(-), with significant difference ($p = 0.017$) (Fig. 2a). The difference in the frequency distribution of the bone apposition rate, however, was more marked and significant between the FGF(+) and FGF(-) groups (Fig. 3). The frequency distribution for FGF(+) was very narrow, whereas that for FGF(-) was broad. The broader distribution for FGF(-) was a result of the presence of low values of the bone apposition rate, which caused an asymmetrical frequency distribution.

The sharp contrast in the broadness of the frequency distribution suggested that a small number of animals

with less-strong bone-forming ability were randomly assigned to both the FGF(+) and FGF(-) groups. In addition, FGF-2 enhanced the bone formation of only those animals with less-strong bone-forming ability in the FGF(+) group. FGF-2 is known to exhibit a bell-shaped dose response, where an excess of FGF-2 has less or no enhancement effect on bone formation [10, 14]. Animals having a sufficient level of endogenous FGF-2 in the FGF(+) group would not have responded to exogenous FGF-2. As a result, there was a lower incidence of impaired bone formation around the FGF(+) screw than the FGF(-) screw.

The risk of impaired bone formation was remarkably lower for FGF(+) than for FGF(-), as revealed by the Weibull plot analysis (Table 4). The Weibull plot was linear for both FGF(+) and FGF(-). Thus, the present analysis meets the theoretical prerequisites of the Weibull plot analysis. The fact that the slope of the regression line was noticeably greater for FGF(+) than for FGF(-) proved that there is significantly less risk of impaired bone formation around the screw with the FGF(+) condition than that with the FGF(-) condition. The risk is expressed as a probability (S) of resulting in a bone apposition rate equal to or less than a specific value of σ . For example, if the specific values are set at 68.82, 63.75, and 50%, the probabilities of resulting in a bone apposition rate equal to or less than 68.82, 63.75, and 50% are 0.1, 0.05, and 0.005, respectively, for FGF(-). For FGF(+), the probabilities for the same specific values are 0.002, 3.5×10^{-4} , and 1.4×10^{-6} (Table 4). Note that the difference between FGF(-) and FGF(+) in terms of the risk probabilities (e.g., 0.1:0.002 at 68.82%, 0.05: 3.5×10^{-4} at 63.75%, and 0.005: 1.4×10^{-6} at 50%) increases when the specific value of the bone apposition rate decreases. The thresholds of $\leq 68.82\%$, $\leq 63.75\%$, and $\leq 50\%$ correspond to bottom 0.5%, 5%, and 10%, respectively, of FGF(-) samples in the rank of bone apposition rate. Thus, FGF(+) was more reliable than FGF(-) in terms of preventing impaired bone apposition regardless

Table 3 Lengths of bone-screw interface line and screw's peripheral line in FGF(-) and FGF(+) groups

	FGF(-) (mm)	FGF(+) (mm)	P value*
Bone-screw interface line	38.9 \pm 9.2	43.5 \pm 7.8	0.03
Screw's peripheral line	46.8 \pm 10.1	49.2 \pm 9.4	0.30

* Student's *t* test

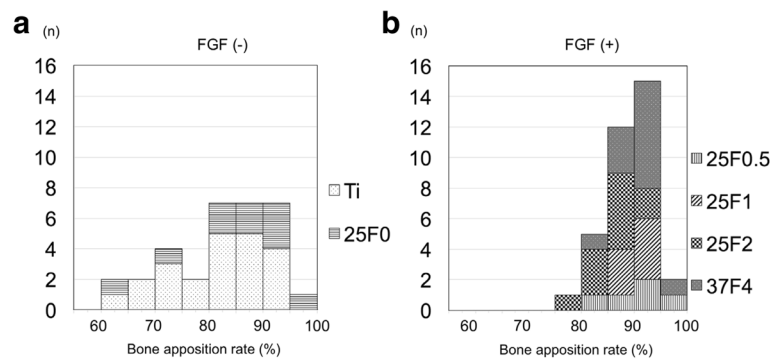


Fig. 3 Frequency histograms of bone apposition rates for FGF(-) (a) and FGF(+) (b). The combination of 25F0.5, 25F1, 25F2, and 37F4 is abbreviated as FGF(+), and the combination of Ti and 25F0 is abbreviated as FGF(-)

of the individual's bone-forming ability. The decreased risk is not a result of the apatite, but rather the presence of FGF-2 in the FGF-2-apatite composite layer, as the slopes for Ti and 25F0 (apatite-coated Ti) were similar and significantly lower than those for 25F0.5, 25F1, 25F2, and 37F4 (Fig. 5).

It is feasible to apply the FGF-2-apatite composite layer to internal fixation screws, which have varied stability at the screw-bone interface depending on the quantity, quality, and regeneration of bone surrounding the screw [30–32]. The stability of the screw-bone interface is characterized by the extraction torque and pull-out resistance [33]. There was higher fixation strength of the screws coated with hydroxyapatite than the uncoated screws owing to direct bone formation on hydroxyapatite [34]. Hydroxyapatite coated with an FGF-2-apatite composite layer at an optimized dose produced more bone formation than that with uncoated hydroxyapatite [23]. Enhanced bone formation associated with other FGF-2-coated implants resulted in greater mechanical stability at the implant-bone interface [35, 36]. In the present study, the screws coated with an FGF-2-apatite

composite layer showed significantly less risk of impaired bone formation than the uncoated and apatite-coated screws. Such a decreased risk of impaired bone formation would result in a decrease in the risk of impaired pull-out resistance. Thus, use of an FGF-2-apatite composite layer to coat internal fixation screws is feasible in that it could decrease the risk of screw loosening. This characteristic is clinically useful because screw loosening leads to severe complications.

In the present study, the use of the Weibull plot analysis provided new insights into the effect of FGF-2 on bone formation. The previously reported effects of FGF-2 on increasing bone formation were equivocal. Some authors reported increased effects, whereas others reported no effect or only a limited effect [37–40]. All of these studies compared the average amount of bone formation or osteogenic differentiation. As shown in Fig. 2, a comparison of the average values is not efficient for detecting the difference in frequency of outlier values when the frequency is low. The Weibull plot analysis enabled such low probability events to be detected. As a result, it revealed a restorative effect of FGF-2 on the

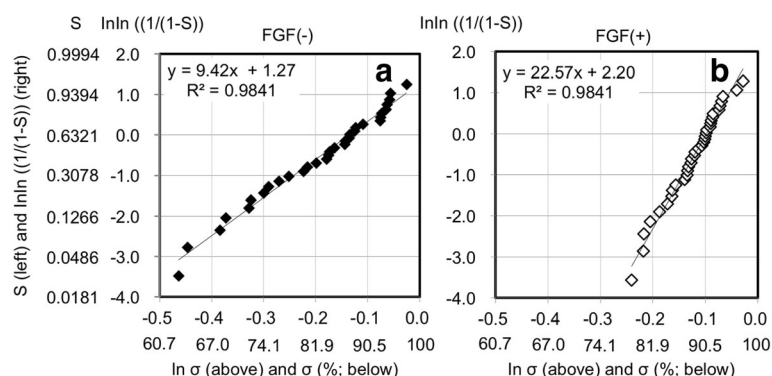


Fig. 4 Weibull plots of the bone apposition rates for FGF(-) (a) and FGF(+) (b) that show the probability (S) of resulting in a bone apposition rate in the range of 0 to σ (%). The y and x of the regression lines represent $\ln \ln [1/(1 - S)]$ and $\ln \sigma$, respectively. The combination of 25F0.5, 25F1, 25F2, and 37F4 is abbreviated as FGF(+), and the combination of Ti and 25F0 is abbreviated as FGF(-)

Table 4 Probability of impaired bone formation in different setting of threshold of bone apposition rate

Threshold setting in bone apposition rate	Probability of impaired bone formation	
	FGF(-)	FGF(+)
≤68.82%	0.1	0.002
≤63.75%	0.05	3.5×10^{-4}
≤50%	0.005	1.4×10^{-6}

impaired bone-forming ability. However, the mechanism that underlies the restoring effect remains unclear.

Limitations of the present study are that (i) the FGF-2-apatite composite layers that were prepared under different conditions are involved in the analysis, (ii) the

number of inflammation-free histological sections in each group was small and varied greatly, and (iii) no pull-out strength data are presented.

Conclusions

Histomorphometrical analysis of inflammation-free histological sections obtained using percutaneous implantation of external fixation screws revealed that, on average, screws coated with FGF-2-apatite composite layers showed a slightly higher bone apposition rate, with a significant difference from the uncoated and apatite-coated screws. However, FGF-2-apatite composite layers have a much more marked effect on

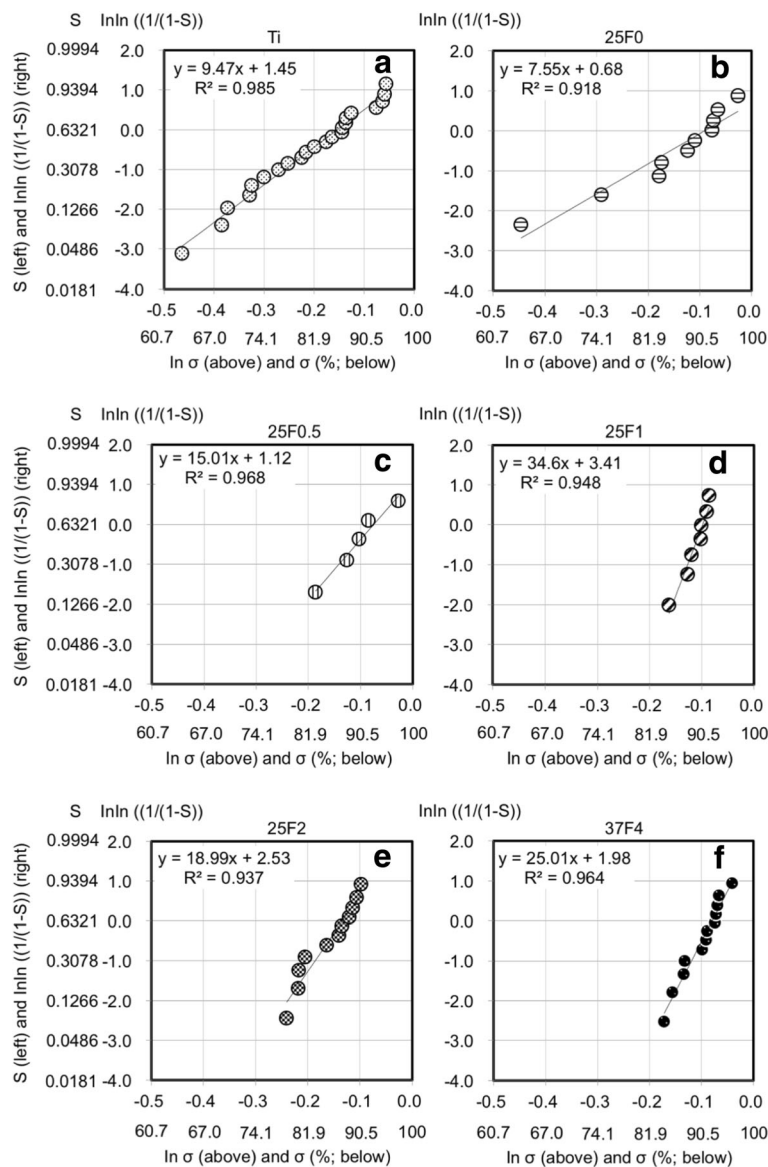


Fig. 5 Weibull plots of the bone apposition rates for the six titanium screw groups. Weibull plots of bone apposition rate for Ti (a), 25F0 (b), 25F0.5 (c), 25F1 (d), 25F2 (e), and 37F4 (f) show the probabilities (S) of resulting in a bone apposition rate in the range of 0 to σ (%). The y and x of regression lines represent $\ln \ln [1/(1 - S)]$ and $\ln \sigma$, respectively

reducing the incidence of impaired bone apposition than on enhancing the bone apposition rate. The Weibull plot analysis revealed that the risk of resulting in less than 63.75%, for example, in bone apposition rate was reduced by 1/142 times ($3.5 \times 10^{-4}/0.05$) with the use of FGF-apatite composite layer coating compared with uncoated and apatite-coated screws. Therefore, FGF-2-apatite composite layers are feasible for coating internal fixation screws, as it is known that bone quality, quantity, and formation around the screw is crucial to prevent loosening of internal fixation screws. Further study is required.

Future study

Animal studies that include implanting internal fixation screws, measuring local bone formation, and determining the pull-out strength of the screw are required in combination with the Weibull plot analysis. These studies could further clarify whether the FGF-2-apatite composite layers reduce the risk of screw loosening.

Abbreviations

BMP: Bone morphogenetic proteins; FGF-2: Fibroblast growth factor-2; FGF-2-apatite: Fibroblast growth factor-2-apatite

Acknowledgements

Not applicable.

Funding

This study was supported by the grant of the Initiative for Accelerating Regulatory Science in Innovative Drug, Medical Device, and Regenerative Medicine from the Ministry of Health, Labour and Welfare, Japan, and a JSPS KAKENHI Grant (number JP15H03056).

Availability of data and material

The datasets generated during and/or analyzed during the current study are available from the corresponding author on reasonable request.

Authors' contributions

KF, HM, SM, AI, YH, and MY conceived the study and participated in its design and coordination. YS prepared the coating. HM performed the animal experiment. KF and SM performed the histomorphometrical measurements. KF, AI, and HM analyzed the data and drafted the manuscript. All authors read and approved the final manuscript.

Competing interests

The authors declare that they have no competing interests.

Consent for publication

Not applicable.

Ethics approval and consent to participate

All of the animal experiments and breeding were performed according to the conditions approved by the ethics committees of both the University of Tsukuba and the National Institute of Advanced Industrial Science and Technology (AIST), which were in accordance with the National Institutes of Health Guidelines for the Care and Use of Laboratory Animals (<http://grants.nih.gov/grants/olaw/Guide-for-the-care-and-use-of-laboratory-animals.pdf>).

Author details

¹Department of Orthopaedic Surgery, Faculty of Medicine, University of Tsukuba, 1-1-1 Tennodai, Tsukuba, Ibaraki 305-8575, Japan. ²Health Research Institute, National Institute of Advanced Industrial Science and Technology (AIST), Central 6, 1-1-1 Higashi, Tsukuba, Ibaraki 305-8566, Japan.

³Department of Orthopaedic Surgery, Ibaraki Prefectural University of Health Sciences, 4669-2 Ami Ami-machi, Inashiki-gun, Ibaraki 300-0394, Japan.

Received: 12 September 2016 Accepted: 6 December 2016

Published online: 05 January 2017

References

- Galbusera F, Volkheimer D, Reitmaier S, Berger-Roscher N, Kienle A, Wilke HJ. Pedicle screw loosening: a clinically relevant complication? *Eur Spine J*. 2015;24:1005–16.
- Wu JC, Huang WC, Tsai HW, Ko CC, Wu CL, Tu TH, et al. Pedicle screw loosening in dynamic stabilization: incidence, risk, and outcome in 126 patients. *Neurosurg Focus*. 2011;31:E9.
- Kocak T, Cakir B, Reichel H, Mattes T. Screw loosening after posterior dynamic stabilization: review of the literature. *Acta Chir Orthop Traumatol Cech*. 2010;77:134–9.
- Shea TM, Laun J, Gonzalez-Blohm SA, Doulgeris JJ, Lee 3rd WE, Aghayev K, et al. Designs and techniques that improve the pullout strength of pedicle screws in osteoporotic vertebrae: current status. *Biomed Res Int*. 2014;2014:748393.
- Hasegawa T, Inufusa A, Imai Y, Mikawa Y, Lim TH, An HS. Hydroxyapatite-coating of pedicle screws improves resistance against pull-out force in the osteoporotic canine lumbar spine model: a pilot study. *Spine J*. 2005;5:239–43.
- Surmenev RA, Surmeneva MA, Ivanova AA. Significance of calcium phosphate coatings for the enhancement of new bone osteogenesis: a review. *Acta Biomater*. 2014;10:557–79.
- Sandén B, Olerud C, Johansson C, Larsson S. Improved extraction torque of hydroxyapatite-coated pedicle screws. *Eur Spine J*. 2000;9:534–7.
- Qiu ZY, Chen C, Wang XM, Lee IS. Advances in the surface modification techniques of bone-related implants for last 10 years. *Regen Biomater*. 2014;1:67–79.
- Raj V, Raj RM, Sasireka A, Priya P. Fabrication of TiO₂-strontium loaded CaSiO₃/biopolymer coatings with enhanced biocompatibility and corrosion resistance by controlled release of minerals for improved orthopedic applications. *J Mech Behav Biomed Mater*. 2016;60:476–91.
- Yu J, Li K, Zheng X, He D, Ye X, Wang M. In vitro and in vivo evaluation of zinc-modified Ca-Si-based ceramic coating for bone implants. *PLoS One*. 2013;8:e57564.
- Mueller CK, Thorwarth M, Schmidt M, Schlegel KA, Schultze-Mosgau S. Comparative analysis of osseointegration of titanium implants with acid-etched surfaces and different biomolecular coatings. *Oral Surg Oral Med Oral Pathol Oral Radiol Endod*. 2011;112:726–36.
- Wu C, Ramaswamy Y, Liu X, Wang G, Zreiqat H. Plasma-sprayed CaTiSiO₅ ceramic coating on Ti-6Al-4V with excellent bonding strength, stability and cellular bioactivity. *J R Soc Interface*. 2009;6:159–68.
- Sogo Y, Ito A, Onoguchi M, Oyane A, Tsurushima H, Ichinose N. Formation of a FGF-2 and calcium phosphate composite layer on a hydroxyapatite ceramic for promoting bone formation. *Biomed Mater*. 2007;2:S175–80.
- Wang J, Guo J, Liu J, Wei L, Wu G. BMP-functionalised coatings to promote osteogenesis for orthopaedic implants. *Int J Mol Sci*. 2014;15:10150–68.
- Lee SW, Hahn BD, Kang TY, Lee MJ, Choi JY, Kim MK, et al. Hydroxyapatite and collagen combination-coated dental implants display better bone formation in the peri-implant area than the same combination plus bone morphogenetic protein-2-coated implants, hydroxyapatite only coated implants, and uncoated implants. *J Oral Maxillofac Surg*. 2014;72:53–60.
- Lee JS, Yang JH, Hong JY, Jung UW, Yang HC, Lee IS, et al. Early bone healing onto implant surface treated by fibronectin/oxysterol for cell adhesion/osteogenic differentiation: in vivo experimental study in dogs. *J Periodontol Implant Sci*. 2014;44:242–50.
- Naito Y, Jimbo R, Bryington MS, Vandeweghe S, Chrcanovic BR, Tovar N, et al. The influence of 1α,25-dihydroxyvitamin D₃ coating on implant osseointegration in the rabbit tibia. *J Oral Maxillofac Res*. 2014;5:e3.
- Fang K, Song W, Wang L, Jia S, Wei H, Ren S, et al. Immobilization of chitosan film containing semaphorin 3A onto a microarc oxidized titanium implant surface via silane reaction to improve MG63 osteogenic differentiation. *Int J Nanomedicine*. 2014;9:4649–57.
- Niu S, Cao X, Zhang Y, Zhu Q, Zhu J. The inhibitory effect of alendronate-hydroxyapatite composite coating on wear debris-induced peri-implant high bone turnover. *J Surg Res*. 2013;179:e107–15.
- Kim SE, Suh DH, Yun YP, Lee JY, Park K, Chung JY, et al. Local delivery of alendronate eluting chitosan scaffold can effectively increase osteoblast functions and inhibit osteoclast differentiation. *J Mater Sci Mater Med*. 2012;23:2739–49.
- Wang JS, Aspenberg P. Basic fibroblast growth factor promotes bone ingrowth in porous hydroxyapatite. *Clin Orthop Relat Res*. 1996;333:252–60.

22. Liu Y, Cai S, Shu XZ, Shelby J, Prestwich GD. Release of basic fibroblast growth factor from a crosslinked glycosaminoglycan hydrogel promotes wound healing. *Wound Repair Regen*. 2007;15:245–51.
23. Tsurushima H, Marushima A, Suzuki K, Oyane A, Sogo Y, Nakamura K, et al. Enhanced bone formation using hydroxyapatite ceramic coated with fibroblast growth factor-2. *Acta Biomater*. 2010;6:2751–9.
24. Mutsuzaki H, Ito A, Sogo Y, Sakane M, Oyane A, Yamazaki M. The calcium phosphate matrix of FGF-2-apatite composite layers contributes to their biological effects. *Int J Mol Sci*. 2014;15:10252–70.
25. Mutsuzaki H, Ito A, Sakane M, Sogo Y, Oyane A, Ochiai N. Fibroblast growth factor-2-apatite composite layers on titanium screw to reduce pin tract infection rate. *J Biomed Mater Res B Appl Biomater*. 2008;86:365–74.
26. Wang X, Ito A, Sogo Y, Li X, Tsurushima H, Oyane A. Ascorbate-apatite composite and ascorbate-FGF-2-apatite composite layers formed on external fixation rods and their effects on cell activity in vitro. *Acta Biomater*. 2009;5:2647–56.
27. Weibull W. A statistical distribution function of wide applicability. *J Applied Mechanics*. 1951;8:293–7.
28. Mutsuzaki H, Ito A, Sogo Y, Sakane M, Oyane A, Ochiai N. Enhanced wound healing associated with Sharpey's fiber-like tissue formation around FGF-2-apatite composite layers on percutaneous titanium screws in rabbits. *Arch Orthop Trauma Surg*. 2012;132:113–21.
29. Mutsuzaki H, Sogo Y, Oyane A, Ito A. Improved bonding of partially osteomyelitic bone to titanium pins owing to biomimetic coating of apatite. *Int J Mol Sci*. 2013;14:24366–79.
30. Wittenberg RH, Shea M, Swartz DE, Lee KS, White 3rd AA, Hayes WC. Importance of bone mineral density in instrumented spine fusions. *Spine (Phila Pa 1976)*. 1991;16:647–52.
31. Halvorson TL, Kelley LA, Thomas KA, Whitecloud 3rd TS, Cook SD. Effects of bone mineral density on pedicle screw fixation. *Spine (Phila Pa 1976)*. 1994;19:2415–20.
32. Inoue G, Ueno M, Nakazawa T, Imura T, Saito W, Uchida K, et al. Teriparatide increases the insertional torque of pedicle screws during fusion surgery in patients with postmenopausal osteoporosis. *J Neurosurg Spine*. 2014;21:425–31.
33. Sandén B, Olerud C, Petré-Mallmin M, Johansson C, Larsson S. The significance of radiolucent zones surrounding pedicle screws: definition of screw loosening in spinal instrumentation. *J Bone Joint Surg (Br)*. 2004;86:457–61.
34. Upasani W, Farnsworth CL, Tomlinson T, Chambers RC, Tsutsui S, Slivka MA, et al. Pedicle screw surface coatings improve fixation in nonfusion spinal constructs. *Spine (Phila Pa 1976)*. 2009;34:335–43.
35. Nagayasu-Tanaka T, Nozaki T, Miki K, Sawada K, Kitamura M, Murakami S. FGF-2 promotes initial osseointegration and enhances stability of implants with low primary stability. *Clin Oral Impl Res*. 2016. doi:10.1111/clr.12797 [Epub ahead of print].
36. Gao Y, Luo E, Hu J, Xue J, Zhu S, Li J. Effect of combined local treatment with zoledronic acid and basic fibroblast growth factor on implant fixation in ovariectomized rats. *Bone*. 2009;44:225–32.
37. Honnami M, Choi S, Liu IL, Kamimura W, Taguchi T, Hojo H, et al. Repair of rabbit segmental femoral defects by using a combination of tetrapod-shaped calcium phosphate granules and basic fibroblast growth factor-binding ion complex gel. *Biomaterials*. 2013;34:9056–62.
38. Luong LN, Ramaswamy J, Kohn DH. Effects of osteogenic growth factors on bone marrow stromal cell differentiation in a mineral-based delivery system. *Biomaterials*. 2012;33:283–94.
39. Nakajima F, Nakajima A, Ogasawara A, Moriya H, Yamazaki M. Effects of a single percutaneous injection of basic fibroblast growth factor on the healing of a closed femoral shaft fracture in the rat. *Calcif Tissue Int*. 2007;81:132–8.
40. Behr B, Sorkin M, Lehnhardt M, Renda A, Longaker MT, Quarto N. A comparative analysis of the osteogenic effects of BMP-2, FGF-2, and VEGFA in a calvarial defect model. *Tissue Eng Part A*. 2012;18:1079–86.

Submit your next manuscript to BioMed Central and we will help you at every step:

- We accept pre-submission inquiries
- Our selector tool helps you to find the most relevant journal
- We provide round the clock customer support
- Convenient online submission
- Thorough peer review
- Inclusion in PubMed and all major indexing services
- Maximum visibility for your research

Submit your manuscript at
www.biomedcentral.com/submit

